

HalifaxHoods

Concession Hoods Quick Start Guide



Revised 10/2019

Receiving and Storage

Once equipment is received, check for both obvious and hidden damage. If damage is found, record all necessary information on the bill of lading and file a claim with the final carrier. Check to be sure that all parts of the shipment, including accessories, are accounted for.

UNPACKING

Verify that all required parts and the correct quantity of each item have been received. If any items are missing, report shortages to your representative to obtaining missing parts. Sometimes it is not possible that all items for the unit be shipped together due to availability of transportation and truck space. Confirmation of shipment(s) must be limited to only items on the bill of lading. Filters are typically shipped in the hood, but sometimes are shipped on a separate skid in their original packaging. Do not remove factory packaging or install filters until just prior to commissioning. Remove all other shipping/packing materials.

WARNING!!

**Installation of this unit should only be performed by a qualified professional.
Please read the instructions thoroughly before installing or servicing this equipment.**

LISTING

This hood is listed to ANSI UL710 and CAN/ULC S646-10 and built to the “NFPA 96” National Fire Protection Association Standard

WARRANTY

This equipment is warranted to be free from defects in materials and workmanship, under normal use and service, for a period of 24 months from date of shipment – See full Installation Instructions for Details.

INSTALLATION

It is necessary to install and operate this unit with the airflow (CFM) designed for the size of hood, filters and installation based on the information provided.

SITE PREPERATION

1. To safely lift equipment into the final installed position you must make sure the area of installation is clear. Make sure you have enough room after installation to service unit easily.
2. Verify the location that the hood will be installed so there is nothing to interfere when installing the unit.
3. Review your plans and specifications for your project.
4. Confirm and verify the supports will support the weight of the hood and fan mounted on top of the truck.
5. If installing light fixtures
 - a. Have electrician following wiring diagram as noted in full Installation Manual
6. Weld Duct connection on top of Hood at area which does not interfere with bracing inside truck
7. Cut hole in Hood at duct connection – See Figure #1, Item #7
8. To cut the hole properly in the roof of truck – See Figure #1
 - a. Lift hood in the location where it will be mounted, ensuring there is adequate room available to install the hood and all ductwork to comply with proper clearances from combustible material (Item # 1)
 - b. Bring duct in contact with top of truck (Item # 5)
 - c. Mark location of duct on truck roof
 - d. Lower hood back down
 - e. Cut hole in roof of truck (Item # 7)
9. Mount Roof Curb with Curb plate on top of truck (Items # 3 & 4)
10. See attached instructions for using Concession Hood Bolt Kit to complete hood attachment
11. Curb Plate securing
 - a. Cut Curb Plate hole where duct meets plate to ensure tight fit
 - b. Secure Curb Plate to top of Roof Curb
12. Install and secure fan on top of Roof Curb (Item # 2)
13. Wire power to Fan
14. Use Sealant around roof curb and any holes which were made during the installation process

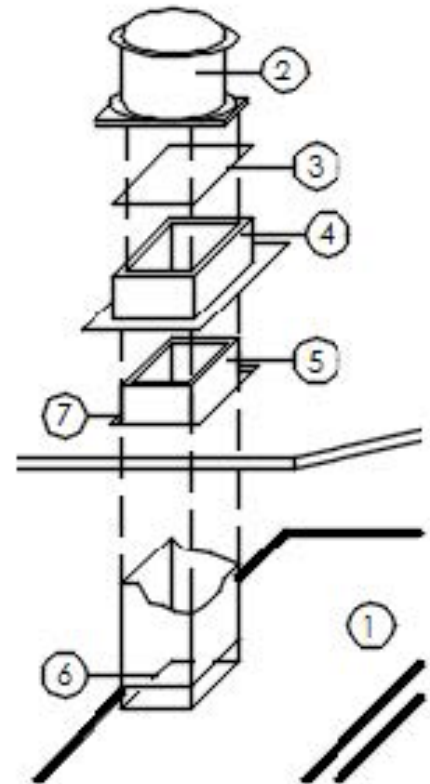


FIGURE 1

IMC, NFPA96 and local authorities having jurisdiction may call for a minimum clearance (typically 18 inches for type 1, grease rated hoods) between the cooking hood(s), exhaust ducts, and building materials which are combustible. However, IMC and NFPA96 do outline acceptable clearance reduction methods; most local jurisdictional authorities will accept the clearance reduction methods approved in the manufacturer's UL listing for Type 1, grease rated hoods.

Bolt Kit

1. Use the "Concession Hood Bolt Kit" when installing the hood. The kit includes the following:

Hardware Description	Quantity (Pcs)
8" Long SS hex head screw ½"-13 TPI	4
½" SS washers	16
½"-13 TPI SS Nuts	16
Ring Gasket .531"ID, 1.250"OD, .063"THK	4

2. Mark pilot holes, 12 inches in, at each end 4" from the front and rear of the Hood
3. Drill Pilot Holes
4. Align and raise the Hood in the location where it will be mounted
5. Drill the holes through the hood and exterior roof line where the hood will be mounted
6. Lower Hood back down
7. Remove any burrs and/or metal fragments around holes
8. See Figure 1 on back side of the sheet for installation
9. Torque all hardware to 75 in-lbs, unless the Garlock washer begins to deform
10. You may remove excess screw threads. There must be at least 1/16" of threads extending past the outward face of the properly torqued nut.

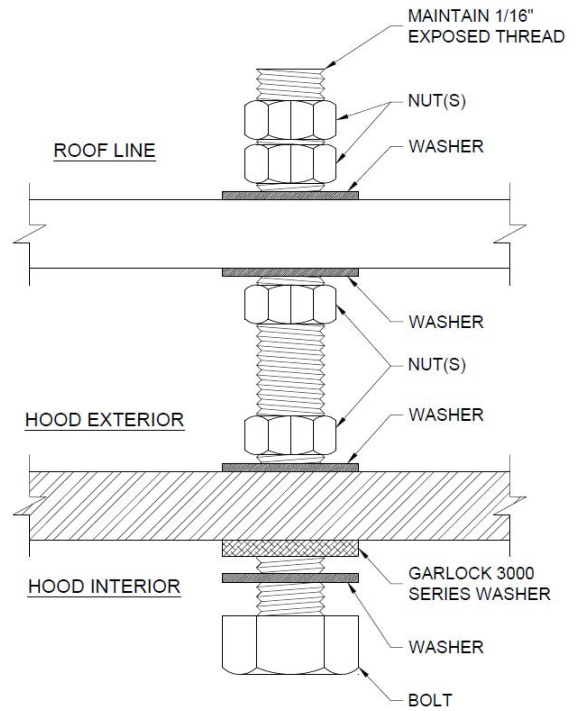


FIGURE 1