



PSW1-2100

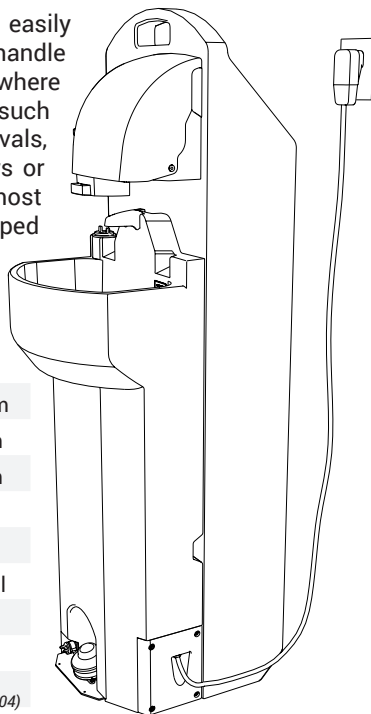
Heated Grandstand™

Warm Water Wash Stand with Wheels

User Manual

General Overview

The PSW1-2100 Grandstand™ sink is easily transportable warm water sink with a built-in handle and rubber treaded wheels. Designed for use where convenient hand washing is desired or required, such as offices, classrooms, construction sites, festivals, food service locations, etc., to be used indoors or out. The compact design allows it to be used most anywhere. Ideal where space is limited. Shipped fully assembled.



Specifications

Height	62 in	157.5 cm
Width	18 in	45.5 cm
Depth	22 in	55.9 cm
Fresh Water Capacity	15.5 gal	58.7 L
Gray Water Capacity	19 gal	72 L
Pump Capacity (per stroke)	2 fl oz	59.14 ml
Soap Dispenser Capacity	30 fl oz	887 ml
Number of Single Dispenses	992	992
Paper Towel Capacity	1 Roll or 500 Single Fold (2 packs - Georgia Pacific 23504)	
Weight Empty	47 lb	21.3 kg
Weight Full	177 lb	80 kg
Power Requirement	110 V	15 Amp
Nominal Water Temp	110°	

All materials, including resin, pigments and additives used to make the plastic components as well as the plumbing components that come in contact with the fresh water are U.S. FDA food grade compliant.

POLYJOHN USA

PolyJohn Enterprises Corp
2500 Gaspar Ave.
Whiting, IN 46394
Phone: 800-292-1305
Fax: 219-659-0625
www.polyjohn.com
info@polyjohn.com

POLYJOHN WORLDWIDE

PolyJohn (UK) Ltd.
Equinox 1 Audby Lane
Wetherby, England LS22 7RD
Phone: 44 (0) 1937-583333
Fax: 44 (0) 1937-583322
www.polyjohn.co.uk
sales@polyjohn.co.uk

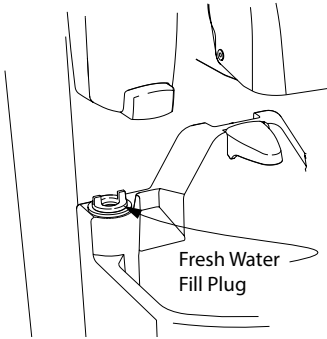
POLYJOHN CANADA

PolyJohn Canada
P.O. Box 2300
199 Forest Plain Rd.
Orillia, Ontario LV3 6S2
Phone: 800-465-9590
Fax: 705-325-8250
www.polyjohncanada.ca
info@polyjohncanada.ca

Operation Directions

Filling with Fresh Water

NOTE: Unit must be filled prior to plugging in the heater. Unscrew the 1" fill plug located at the top, left hand side of the wash basin. Insert a standard 3/4" garden or similar type hose and fill with a few gallons of fresh water to perform a system check. Depress the pump a few times to "prime" it (*the pump has a built-in check valve that will hold a prime between uses*). If needed, continue filling to the top (*which is the 15.5 gallon water level capacity*). Tighten the plug when finished.

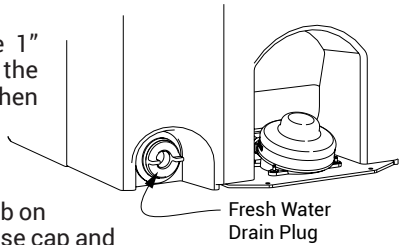


Emptying Fresh Water

Drain the fresh water by unscrewing the 1" plug located at the bottom of the sink, to the left of the foot pump. Tighten the plug when finished.

Emptying Gray Water

Wheel the sink to a proper and approved drain location. Pull the hose out from the rib on the back of the holding tank, remove the hose cap and empty the gray water. Replace the cap when finished.

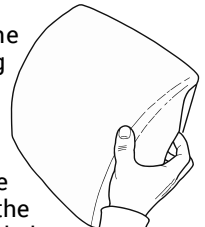
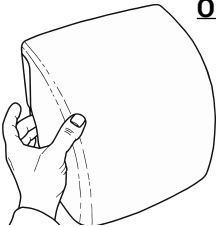


Paper Towel Dispenser

These dispensers are designed to accept towels that are no wider than 9-1/2" wide, whether using single, multi-fold, or a roll towel. The recommended towels are the Georgia Pacific #23504 - *single fold towel* or the Baywest Ecosoft #46200 - *roll towel*.

Opening the Paper Towel Dispenser

Position your hands on both sides of the dispenser cover (*as shown*). While pulling out on both sides lift up the cover and pull down towards yourself.



Filling the Dispenser

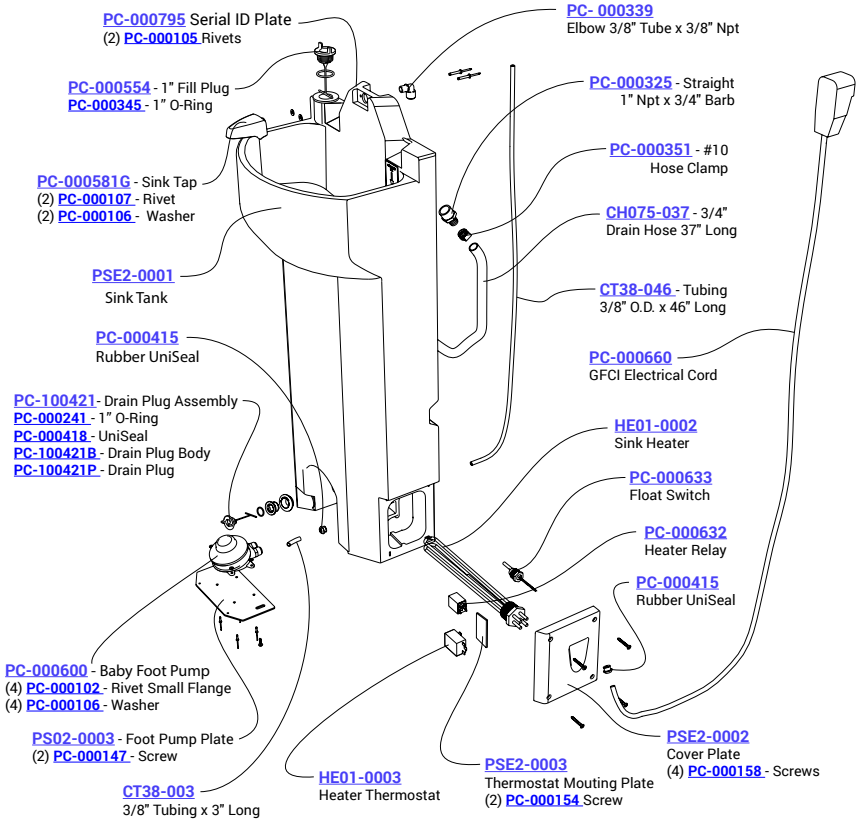
Filling with Fold Towels: Place the package of towels on the towel tray with the fold of the towel facing downward. Pull the first towel through the middle opening of the paper towel tray. Close the cover.

Filling with a Roll of Towels: Place the roll of towels on the spindle with the roll of towels coming off towards you with the arrow end of the spindle facing towards the right. Place the spindle into the right side of the dispenser first. Place the left side of the spindle into the groove on the left side of the dispenser and push down in place. Feed the roll of towels over the front of the paper towel tray. Close the cover.

Water Heater Information

This unit is equipped with a heating element to heat the fresh water. It is controlled by a built in thermostat to maintain a nominal water temperature of 110°. The unit is equipped with a float switch to turn off power to the heating element if the water level should drop too low.

Parts Drawing - Exploded View

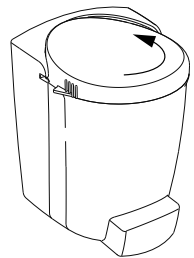


Water Heater Information Cont.

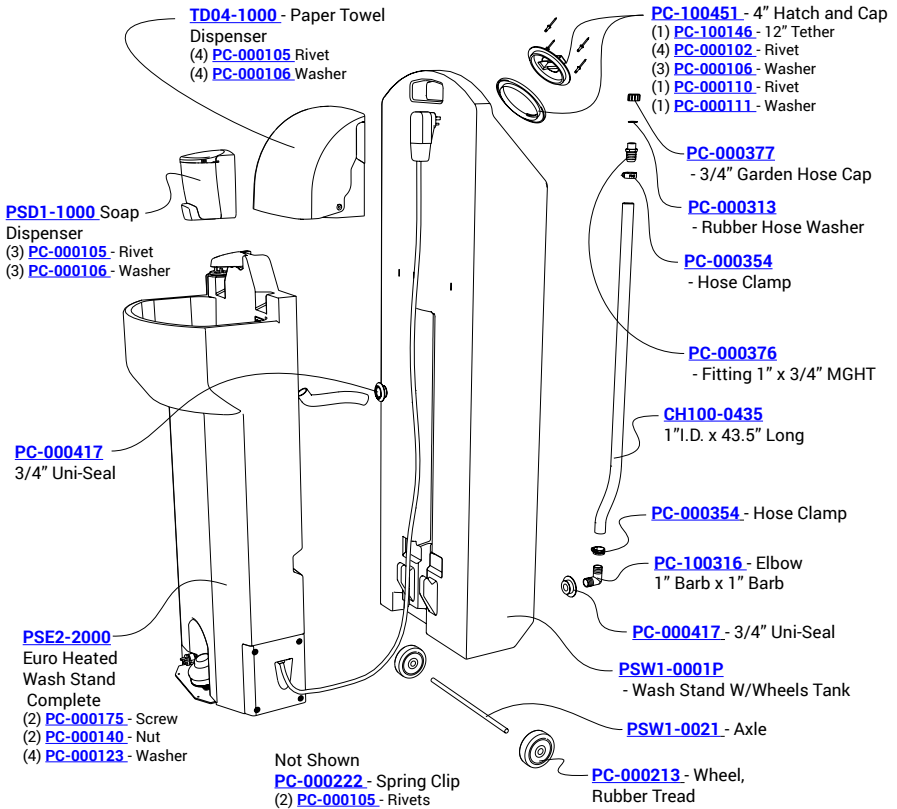
The unit may take up to one hour to heat the water, depending upon the temperature of the water that it is filled with. The system is electrically protected with a GFCI plug. If for some reason, the GFCI were to trip, simply push the reset button on the plug. If the unit trips the GFCI protection again, remove from service, and have a qualified electrician inspect the sink.

Soap Dispenser

To fill the soap dispenser, open it by turning the lid counter clockwise and lifting the lid off. Fill with 30 fluid ounces (or desired amount) of liquid soap and reinstall the lid. To remove the dispenser for transporting the unit, remove the lid, and locate the tab on the middle of the mounting plate at the rear of the dispenser. Push in on it, and slide the dispenser up, and off. Replace the lid back on the dispenser and lock in place by turning the lid 1/4 turn.



Parts Drawing - Exploded View



Winterizing

- Drain all water from the tanks.
- Flush tank with a solution of chlorine and water.
- Depress the foot pump to run the chlorine solution through the lines.
- Drain all water from the tanks and while the drains are open, continue to pump the foot pumps to clear all of the liquids from the lines.

Cleaning and Maintenance

Use a mild soap to clean all surfaces and component parts.

Minor scratches and abrasions can be lightly sanded or scrubbed with a mild abrasive cleaner (*such as "Soft Scrub"*) that contains calcium carbonate, hypochlorate bleach and detergents. Be sure to follow the cleaning product directions since these ingredients may cause hazardous gases when mixed with other chemicals. Rinse the cleaned area and buff with a conventional wax.

Some light scratches may also be hidden by using an industrial hot air gun.

To keep the water fresh add a "Fresh Sink Tablet" (*chlorinated tablet*)(our part number CK01-0030) each time the sink is filled with water.