

Parts Catalog



GS30T

PRICE COMPUTING SCALE

MODELS: GS30 & GS30T

01-08-2010
IMPORTANT!

TO EXPEDITE SHIPMENT OF PARTS, ALWAYS SPECIFY MODEL, REV,
PART NUMBER, AND SERIAL NUMBER OF CHOPPER.

GLOBE FOOD EQUIPMENT COMPANY

P.O. Box 3209
Dayton, Ohio 45401

Parts Department

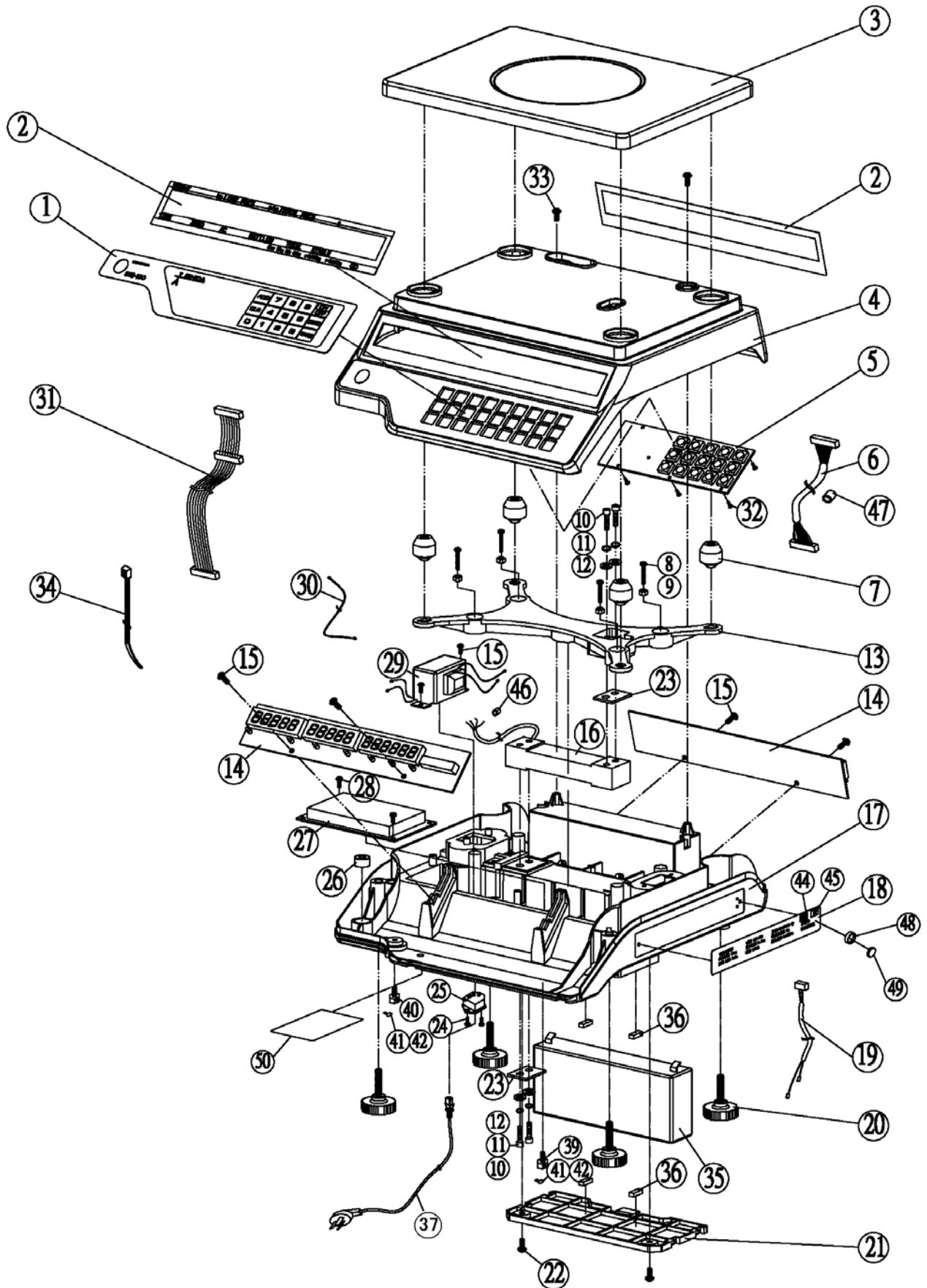
Toll Free 1-800-745-6238 • Fax (937) 290-0585

E-Mail: globeinfo@globeslicers.com

Website: www.globeslicers.com

Not for resale

GS30 SCALE ASSEMBLY



GS30 SCALE PARTS LIST

ITEM	PART NUMBER	DESCRIPTION	QTY
1	E680411	KEY SHEET	1
2	E680600	SHEET, DISPLAY	2
3	E256809	PLATTER	1
4	E429406	CASE	1
5	E281800	KEY, GS30/GS30T	1
6	E247017	HARNESS, KEY - S2	1
7	E001621	PLATTER SUPPORT - RUBBER	4
8	E017201	SCREW, M4X25	4
9	E082301	NUT, M4	4
10	E016909	SCREW	4
11	E020801	SPRING WASHER	4
12	E017003	WASHER, M6	4
13	E255124	PLATTER SUPPORT	1
14	E281423	DISPLAY	2
15	E013004	SCREW, M4X10	11
16	E249002	LOAD CELL	1
17	E429311	BASE	1
18	E680703	DATA PLATE	1
19	E252509	HARNESS, BATTERY - S3	1
20	E002515	LEVELING FOOT	4
21	E429500	COVER, BATTERY	1
22	E024800	SEAL, WIRE - F1	4
23	E257609	SEAL WASHER	2
24	E016203	SCREW	2
25	E282008	CONNECTOR, INLET	1
26	E572705	LEVEL UNIT	1
27	E631103	POWER CIRCUIT BOARD	1
28	E012308	SCREW	2
29	E528402	TRANSFORMER	1
30	E249501	HARNESS, GND - S2	1
31	E248306	HARNESS, DISPLAY - S3	1
32	E282901	SCREW, M2X4.5	8
33	E182108	SCREW, M4X12	2
34	E014500	CABLE TIE	5
35	E133100	STORAGE BATTERY	1
36	E031901	BATTERY CUSHION	4
37	E333501	POWER CORD	1
39	E022701	SEAL SCREW, M4	1
40	E048600	SCREW, SEAL	1
41	E024800	SEAL, WIRE - F1	2
42	E024903	SEAL LEAD	2
46	E073009	FERRITE CORE	1

GS30T SCALE PARTS LIST

ITEM	PART CODE	DESCRIPTION	QTY
1	E680411	KEY SHEET	1
2	E024800	SEAL, WIRE - F1	2
3	E024903	SEAL LEAD	2
4	E256809	PLATTER	1
6	E182108	SCREW, M4X12	2
7	E429406	CASE	1
8	E247017	HARNESS, KEY - S2	1
9	E281800	KEY, GS30/GS30T	1
10	E016909	SCREW	4
11	E020801	SPRING WASHER	4
12	E017003	WASHER, M6	4
14	E017201	SCREW, M4X25	4
15	E001621	PLATTER SUPPORT - RUBBER	4
16	E282901	SCREW, M2X4.5	8
17	E367404	HARNESS, GND - S2	1
18	E255124	PLATTER SUPPORT	1
19	E528402	TRANSFORMER	1
20	E013004	SCREW, M4X10	6
21	E249002	LOAD CELL	1
22	E281423	DISPLAY	2
23	E249501	HARNESS, GND - S2	1
24	E429311	BASE	1
25	E680807	DATA PLATE	1
26	E014500	CABLE TIE	3
28	E002515	LEVELING FOOT	4
29	E429500	COVER, BATTERY	1
30	E024800	SEAL, WIRE - F1	2
31	E333501	POWER CORD	1
32	E022701	SEAL SCREW, M4	1
33	E257609	SEAL WASHER	1
34	E133100	STORAGE BATTERY	1
35	E016203	SCREW	2
36	E282008	CONNECTOR, INLET	1
37	E572705	LEVEL UNIT	1
38	E631103	POWER CIRCUIT BOARD	1
39	E012308	SCREW	2
40	E286401	DISPLAY SUPPORT POST	1
41	E680214	DISPLAY, PANEL - FRONT	1
42	E680318	DISPLAY, PANEL - REAR	1
43	E515900	DISPLAY CASE, FRONT	1
44	E516004	DISPLAY CASE, REAR	1
45	E012101	SCREW, M4X6	2
46	E144407	WASHER, M5	2
47	E176004	O RING	4
48	E334800	BASE, DISPLAY SUPPORT POST	1
49	E334903	COVER, SUPPORT POST BASE	1
50	E364309	UNIT LEVELING AID	2
51	E363837	HARNESS, DISPLAY C2	1
52	E363930	HARNESS, DISPLAY S3	1
53	E013606	SCREW	2
56	E048600	SCREW, SEAL	1
57	E082301	NUT, M4	4
61	E073009	FERRITE CORE	1
62	E462401	FERRITE CORE	1
64	E680515	PANEL, DISPLAY	2

