

# Parts Catalog



**C9 Slicer**

## SLICING MACHINE

MODEL: C9

02-26-15N

Serial Number 101735 and Up

**IMPORTANT!**

TO EXPEDITE SHIPMENT OF PARTS, ALWAYS SPECIFY MODEL, REV,  
PART NUMBER, AND SERIAL NUMBER OF SLICER.

### **GLOBE FOOD EQUIPMENT COMPANY**

2215 East River Road

Dayton, Ohio 45439

#### **Parts Department**

Toll Free 1-800-745-6238 • Fax (937) 290-0585

E-Mail: [info@globefoodequip.com](mailto:info@globefoodequip.com)

Website: [www.globefoodequip.com](http://www.globefoodequip.com)

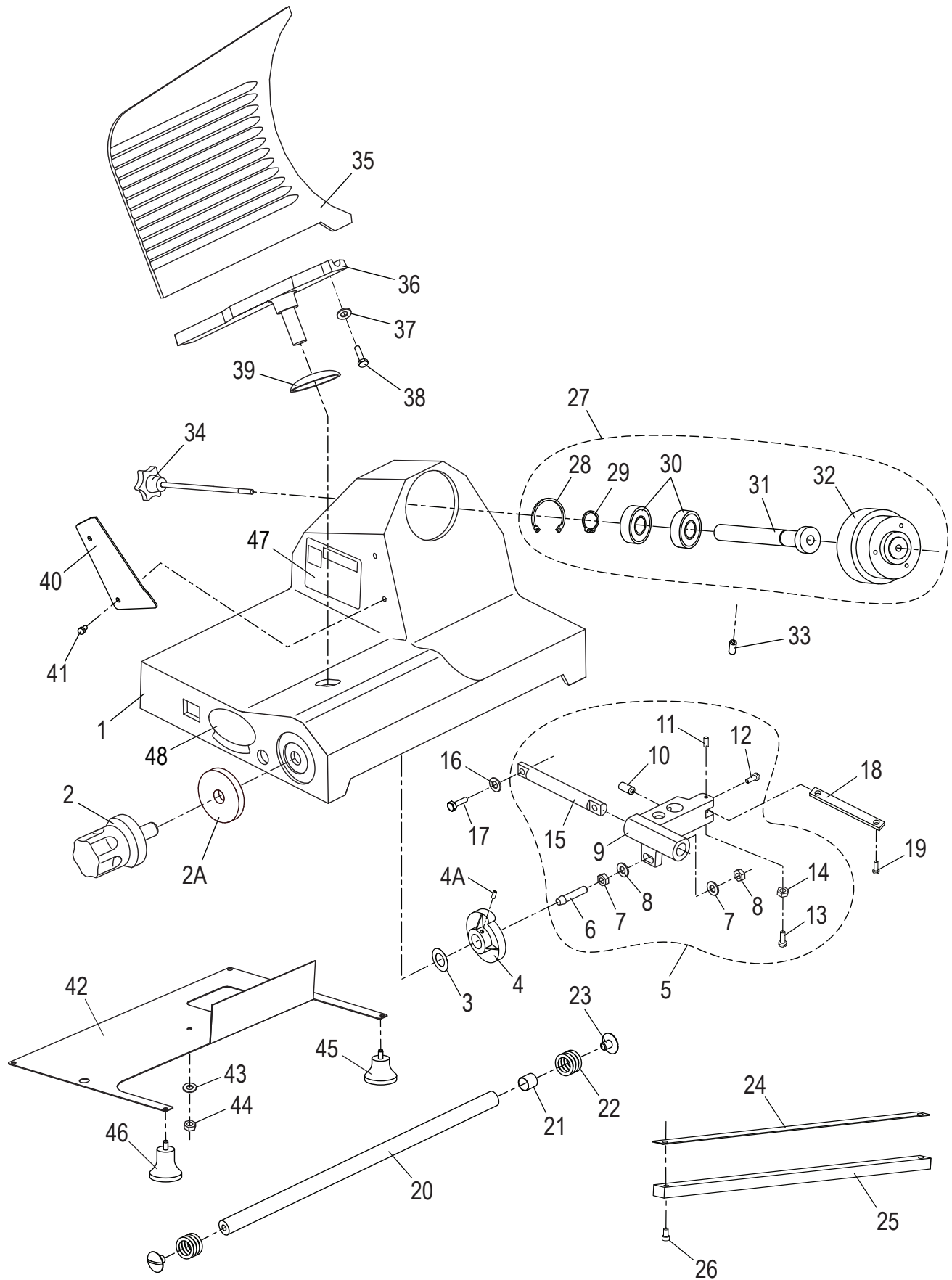
Not for resale



# TABLE OF CONTENTS

Serial Number 101735 and Up	Page
Base Components	1 - 2
Chute Components	3
Knife & Sharpener Components	4
Electrical Components	5
Wiring Diagram	6

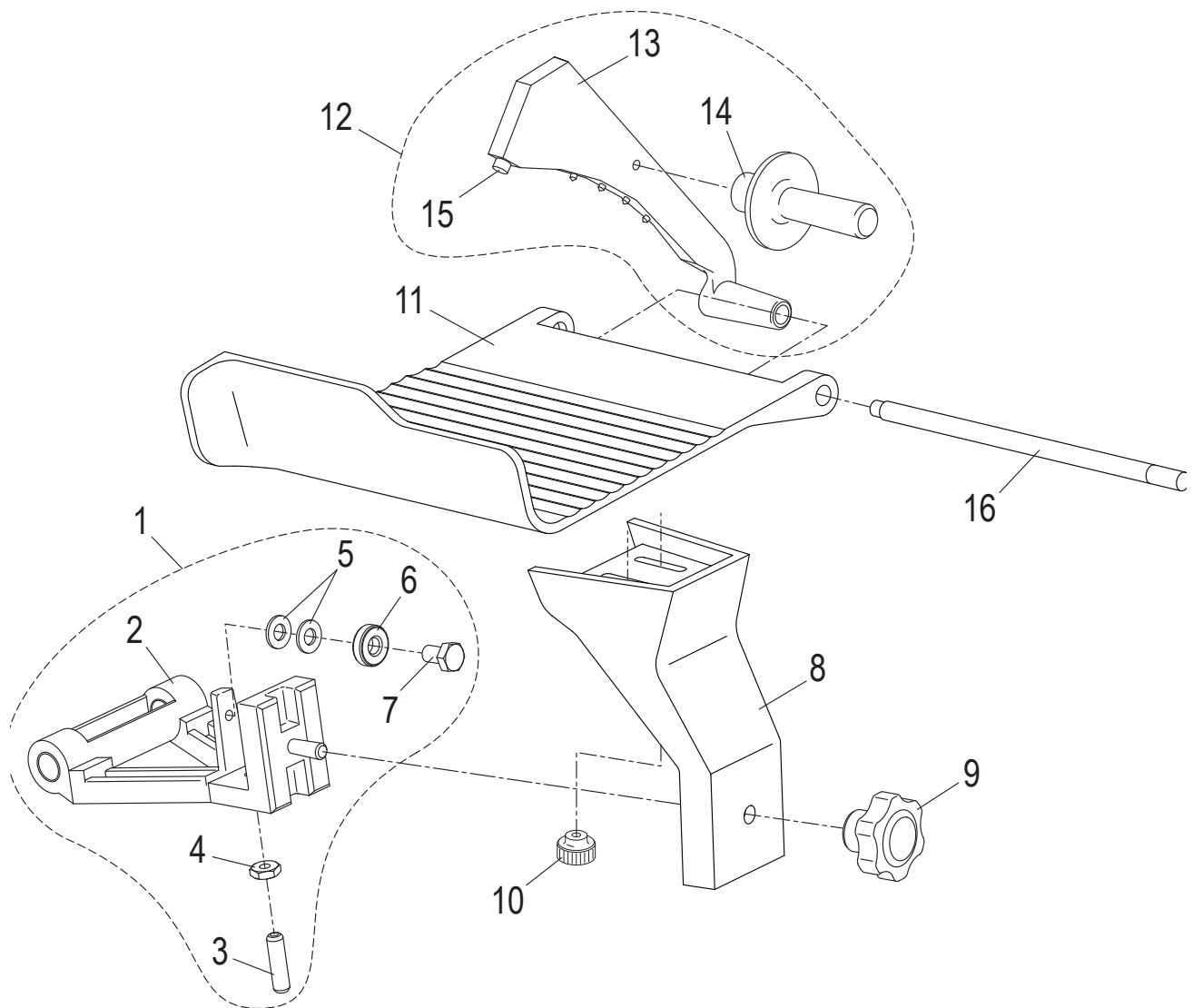
# C9 BASE COMPONENTS



## C9 BASE PARTS LIST

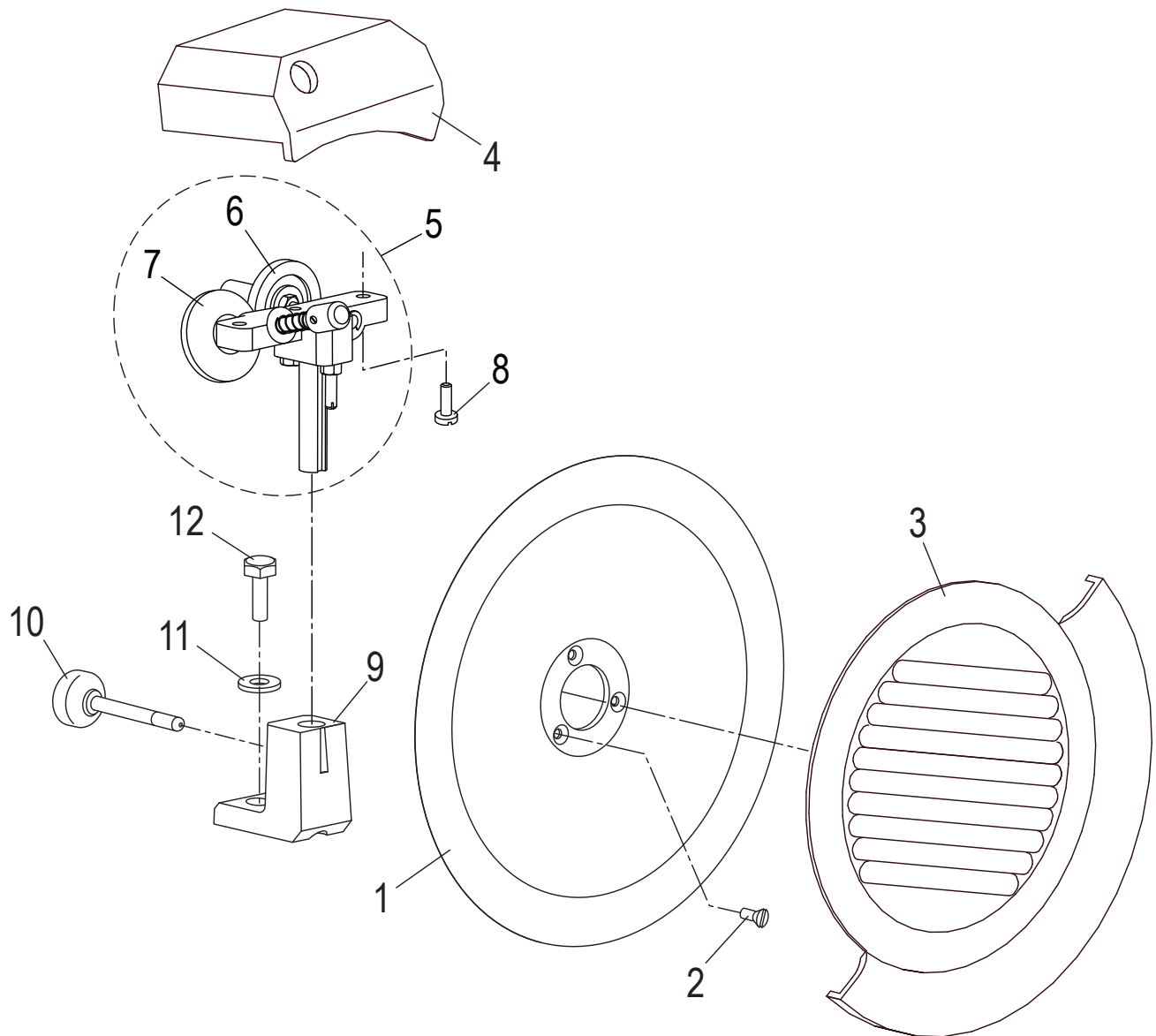
Item	Description	Qty	Part Numbers	Standard Hardware
1	Slicer Base	1	-	
2	Table Adjustment Knob	1	M00205	
2A	Table Adjustment Ferrule	1	M00210	
3	Wavy Washer	1	MCA32	
4	Table Adjustment Cam	1	MCA33	
4A	Set Screw	2	H00181	
5	Table Slide Assembly (Item 6 - 15)	1	MC002	
6	Cam Actuator Stud	1	MCA34	
7	Actuator Washer	2	M035	
8	Actuator Nut	2	M034	
9	Table Slide	1	-	
10	Table Slide Set Screw, Side	2	H00186	
11	Table Slide Set Screw, Top	1	H00182	
12	Table Slide Screw, End	1	H00189	
13	Table Slide Screw, Bottom	1	H00187	
14	Table Slide Nut, Bottom	1	H00028	
15	Table Slide Rod	1	MCA36	
16	Slide Rod Washer	2	M035	
17	Slide Rod Mounting Screw	2	H00190	
18	Table Slide Plate	1	MCA35	
19	Slide Plate Mounting Screw	2	H00061	
20	Carriage Slide Rod	1	MCA26	
21	Carriage Rod Spacer	1	MCA23	
22	Carriage Spring	2	MCA27	
23	Carriage Slide Rod Screw	2	MCA25	
24	Wear Strip	1	MCA31/1	
25	Square Slide Bar	1	MCA31	
26	Slide Bar Mounting Screw	2	H00187	
27	Knife Hub Assembly (Item 28 - 32)	1	M00213	
28	Retaining Ring, Internal	1	H00053	
29	Retaining Ring, External	1	H00194	
30	Bearing	2	MCA12/3	
31	Knife Pulley Shaft	1	MCA12/1USA	
32	Knife Pulley	1	MCA12/2	
33	Knife Shaft Set Screw	1	H00183	
34	Knife Cover Release Knob	1	M00215	
35	Table	1	M00216	
36	Table Support	1	M00217	
37	Table Support Washer	2	M035	
38	Table Support Mounting Screw	2	H00043	
39	Base Hole Cover	1	M00218	
40	Deflector	1	MCA22/1	
41	Deflector Thumb Screw	2	MCC23	
42	Bottom Cover	1	MCA64USA	
43	Cover Washer	1	H00063	
44	Cover Nut	1	H00028	
45	Back Foot	2	M00219	
46	Front Foot	2	M00220	
47	Label, Warning	1	M91022	
48	Label, Chefmate	1	M91020	

# C9 CHUTE COMPONENTS



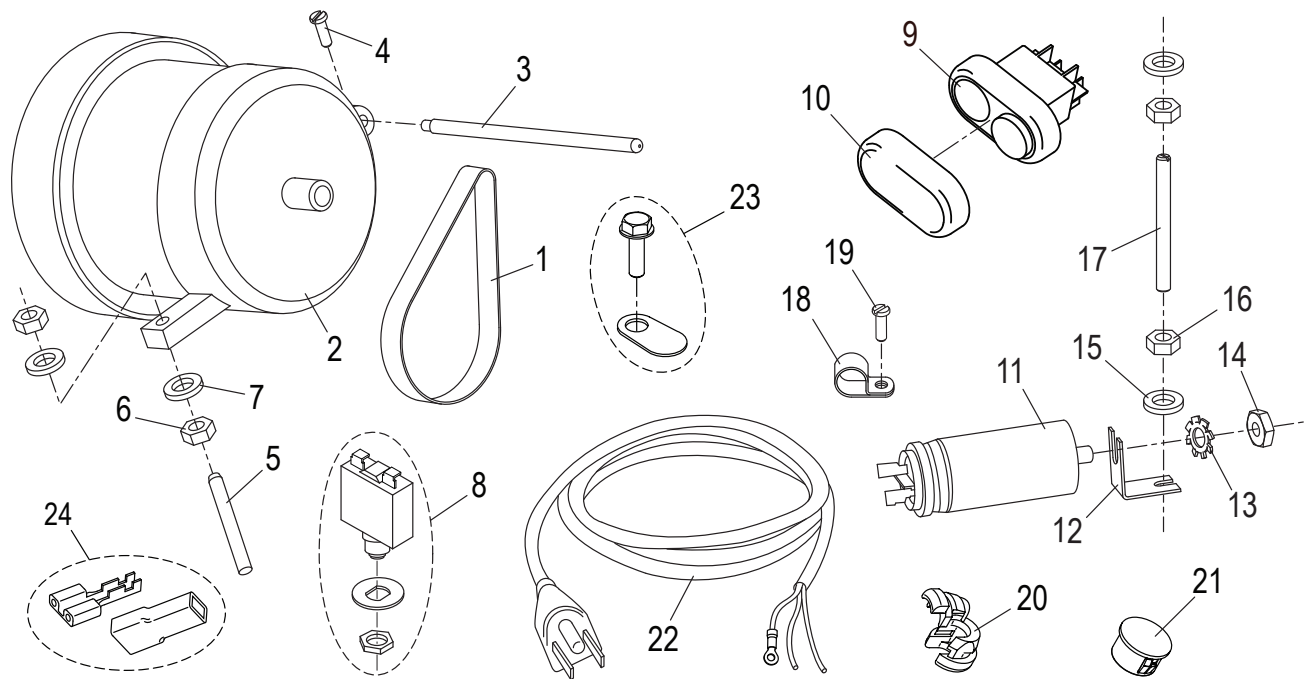
Item	Description	Qty	Part Number	Standard Hardware
1	Chute Slide Assembly (Item 2 - 7)	1	MC006	
2	Chute Slide	1	-	
3	Brass Stud	1	M053	
4	Stud Nut	1	H00192	
5	Flat Washer	2	H00191	
6	Bearing	1	MCA29	
7	Bearing Mounting Screw	1	H00116	
8	Chute Support	1	M00346	
9	Chute Support Knob	1	M00253	
10	Chute Release Knob	1	M00284	
11	Chute	1	M00364	
12	Endweight Assembly (Item 13 - 15)	1	M00256	
13	End Weight	1	-	
14	End Weight Handle	1	M00257	
15	End Weight Bumper	1	M108	
16	End Weight Rod	1	M00652	

## C9 KNIFE AND SHARPENER COMPONENTS



Item	Description	Qty	Part Number	Standard Hardware
1	Knife	1	MCA13	
2	Knife Mounting Screw	3	H00200	
3	Knife Cover	1	MCA4USA	
4	Sharpener Cover	1	MCA11	
5	Sharpener Assembly	1	M00394	
6	Deburring Stone	1	MCA18	
7	Sharpening Stone	1	MCA17	
8	Sharpener Cover Mounting Screw	2	H00187	
9	Sharpener Support	1	MCB10	
10	Knife Cover Release Knob	1	M096	
11	Sharpener Support Washer	1	H00191	
12	Sharpener Support Mounting Bolt	1	H00117	

# C9 ELECTRICAL COMPONENTS



Item	Description	Qty	Part Number	Standard Hardware
1	Drive Belt	1	54	
2	Knife Motor	1	MCA43/2	
3	Post, Motor Pivot	1	M031	
4	Screw	1	H00189	
5	Motor Stud	1	M033	
6	Motor Nut	2	M034	
7	Motor Washer	2	M035	
8	Motor Reset Switch	1	M038	
9	Power Switch	1	MCR68	
10	Power Switch Cover	1	MCR59	
11	Capacitor, 16 $\mu$ f	1	M039	
12	Capacitor Mounting Bracket	1	-	
13	Capacitor Lock Washer	1	H00335	
14	Capacitor Mounting Nut	1	H00192	
15	Cover Spacer Washer	2	H00063	
16	Cover Spacer Nut	2	H00028	
17	Cover Spacer Stud	1	M00369	
18	Cable Clamp	1	M037	
19	Cable Clamp Screw	1	H00061	
20	Strain Relief	1	M111	
21	Hole Plug	1	MCC80	
22	Power Cord & Plug	1	MB65/4F	
23	Ground Screw/Marking Tab Set	1	M00334	
24	Female Terminal/Insulator Set	8	M00233	



# C9 WIRING DIAGRAM 115V, 50/60Hz, 1PH

