

Unit Information

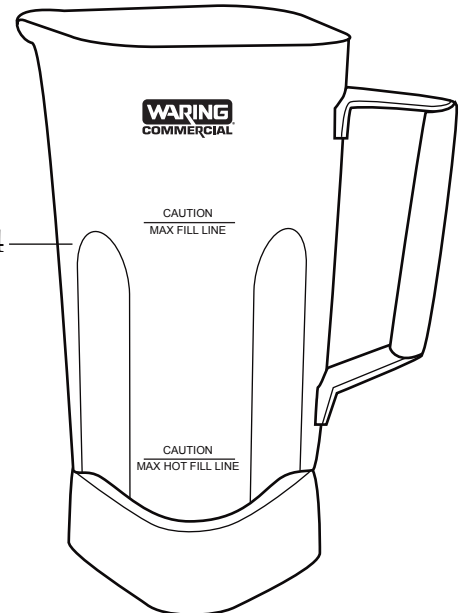
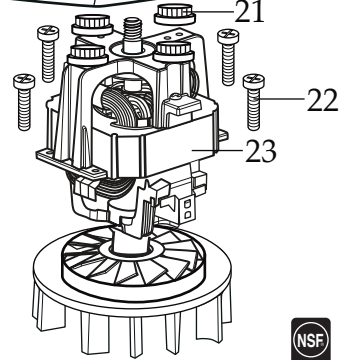
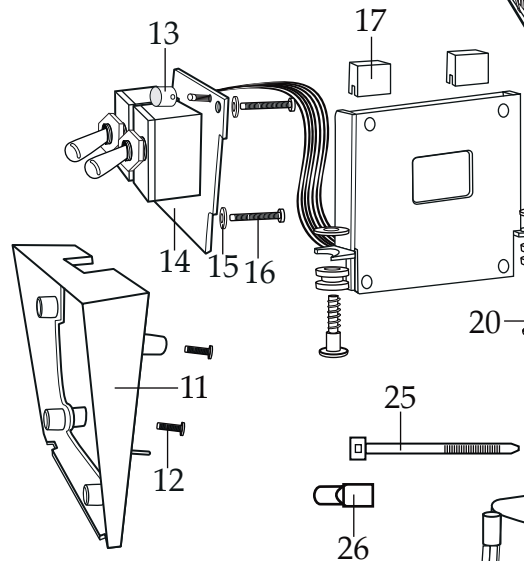
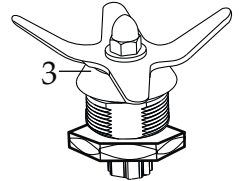
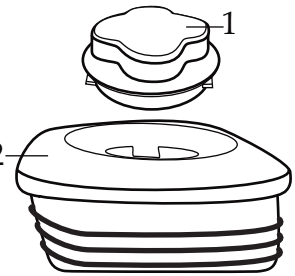
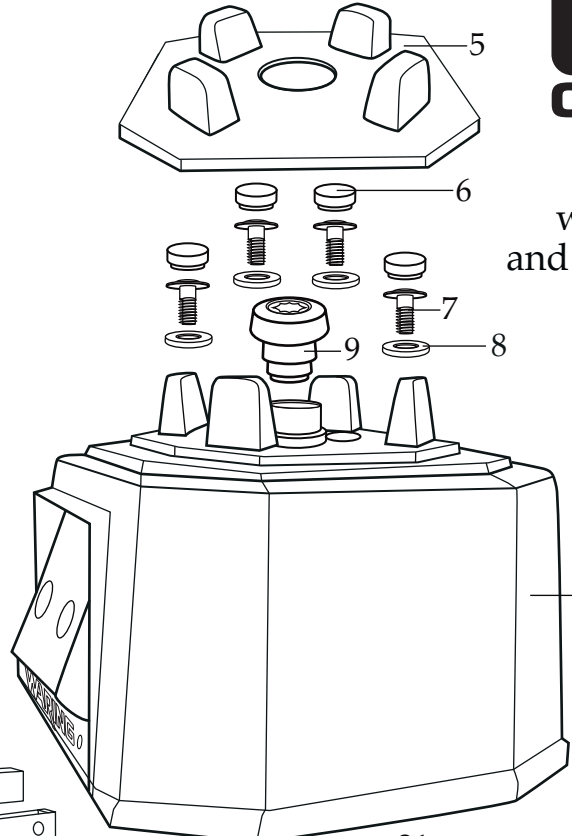
2 HP – 1500 watt – 24,000 Max RPM
 64 oz, Stainless Steel Container
 Limited 2 Motor Year Warranty
 Limited 1 Year Parts and Labor



TORq 2.0 Blender with 2 Toggle Switches and Stainless Steel Container **TBB145S6**



035160
Control Panel Overlay



013304
NSF Seal

- 503345**
Blade Assembly
- 024271**
O Ring
- 026798**
Stainless Steel Washer
- 026797**
Container Support
- 026796**
Bearing Holder Gasket
- 026795**
Stainless Steel Washer
- 026795**
Hex Nut

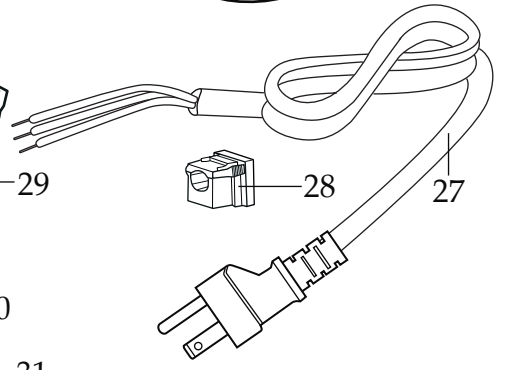
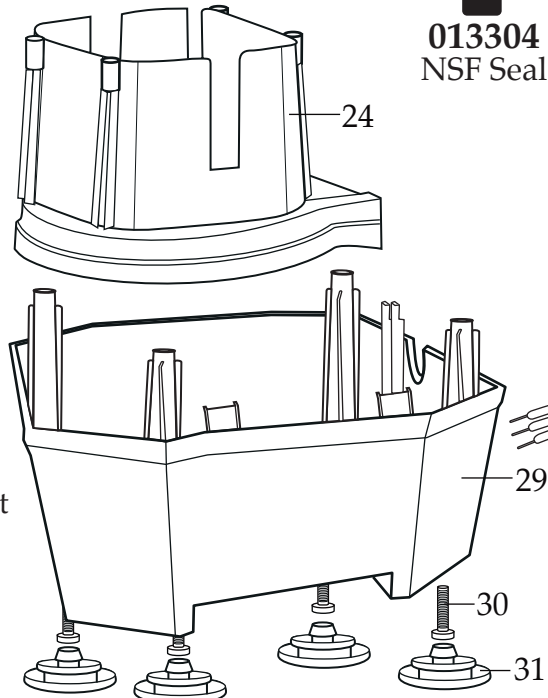
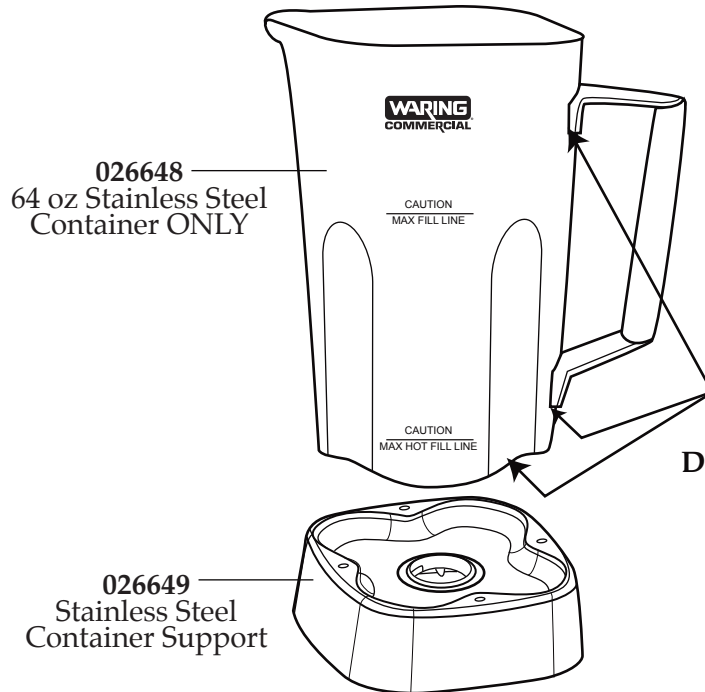
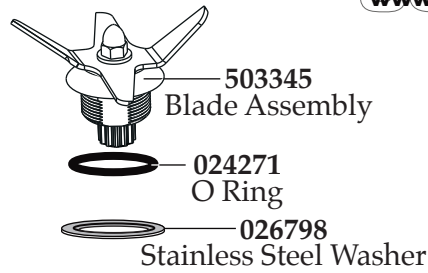


Illustration #	Part#	Description
1	026425-E	Eastman Jar Lid Cover
2	026424-V	Vinyl Jar Lid
3	032483	Blending Assembly Kit
4	503346	64 oz. Stainless Steel Container Complete with Blending Assembly
5	035885	Jar Pad
6	035085	Hole Plug (4 required)
7	034275	Sems (4 required)
8	034273	B Gasket (4 required)
9	035251	Drive Coupling
10	503460-145	Top Housing Assembly
11	035083	Control Housing Back Bezel
12	035090	Screw (2 required)
13	035253	LED Lens
14	035160	TBB145 Control Panel
15	035255	Washer (2 required)
16	035089	Screw (2 required)
17	034900	PCB Cushion (2 required)
18	013604	Washer (2 required)
19	034904	Rubber Pad (2 required)
20	034902	Sems (2 required)
21	034272	A Gasket (4 required)
22	034274	Screw (4 required)
23	035123	ECM Motor
24	503483	Motor Housing with Dampeners
25	013731	Cable Ties (6 required)
26	012409	Small Crimp Connectors (2 required)
	019123	Large Crimp Connector (2 required)
27	035124	Cordset
28	033619	Strain Relief
29	035079	Bottom Housing
30	034274	Screw (4 required)
31	035088	Foot (4 required)



Notes:
 Sealant applied all round these indicated areas.
Dow Corning Sealant RTV 733
 Torque 100-125 in/lbs.
 Lubricant applied to O Ring
Dow Corning 200 (R) Fluid

