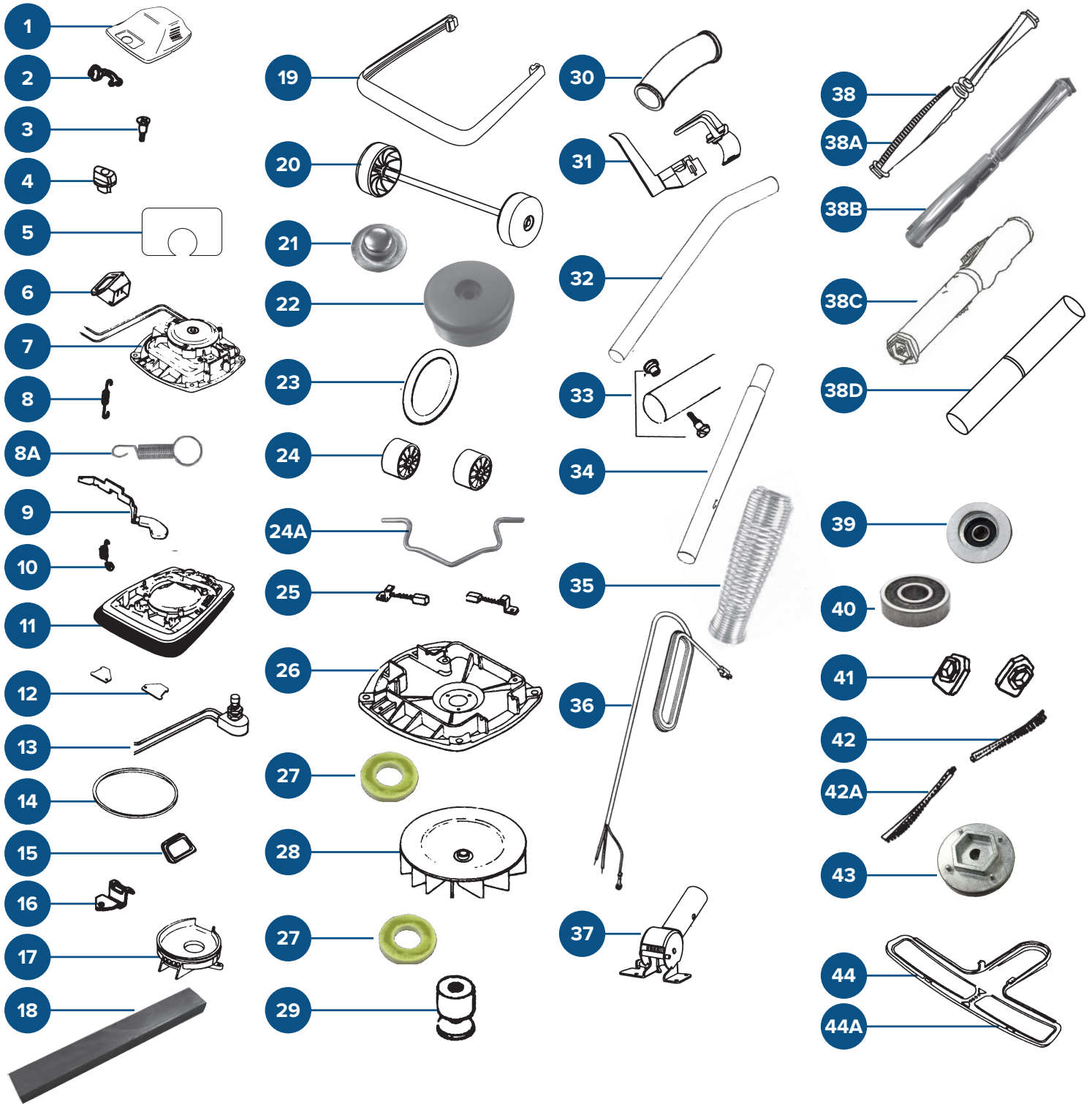


# 12" WIDE UPRIGHT VACUUM PARTS GUIDE



457LAVEX12 • 457LAVHEPA12



Part #	Description
1	Hood
2	Strain Relief Bushing
3	Shoulder Screw
4	Adjustment Knob
5	Name Plate
6	Air Inlet Duct (R.H.)
7	Motor Assembly
8	Foot Pedal Spring
8A	Front Axle Spring
9	Foot Pedal
10	Hood Spring
11	Base Assembly (12" Includes Magnet)
11A	Base Assembly (16" Includes Magnet)
12	Wheel Cover
13	Push Switch
14	Motor Gasket
15	Air Inlet Duct Assembly (L.H.)
16	Adapter Retainer Spring
17	Fan Chamber Cover
18	Replacement Magnet for Built-in Base (2 for 12", 3 for 16")
19	Furniture Guard (12")
19A	Furniture Guard (16")
20	Rear Wheel & Axle Assembly
21	Push Nut
22	Rear Wheels
23	Belt
24	Front Wheels
24A	Front Wheel Axle
25	Motor Brush Assembly
26	Motor Base Assembly
27	Fan Washer
28	Fan
29	Pulley

Part #	Description
30	Handle Grip
31	Cord Retainer Set
32	Upper Handle Tube
33	Screw & Nut Assembly
34	Lower Handle Tube
35	Spring
36	Supply Cord
37	Handle Socket Assembly with Spring
38	Disturbulator Assembly (12")
38A	Disturbulator Assembly (16")
38B	Brush Roll (12")
38C	Brush Roll (16")
38D	Core Only
39	Roller Bearing Holder with Bearing and Felt
40	Brushroll Bearing
41	Rubber Cap
42	Bristle Strip Sets (12")
42A	Bristle Strip Sets (16")
43	Disturbulator Cap
44	Bottom Plate Assembly (12")
44A	Bottom Plate Assembly (16")