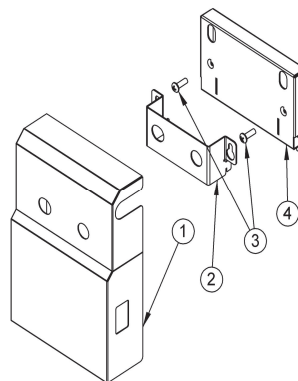


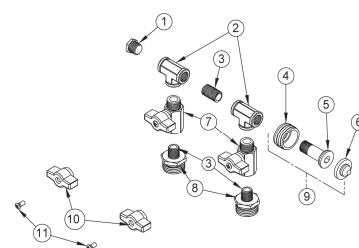
# DEMA Pro-Fill II Sink Dispenser

## MODELS PF652GAP, PF652AG, PF652GAP-2M, & PF652AG-2M

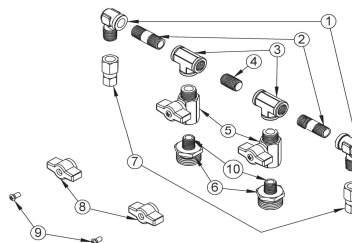
COVER, MOUNTING BRACKETS, AND HARDWARE		
NO.	PART NO.	DESCRIPTION
1	65-35-1	Cover, Dual Valve (Stainless Steel)
2	65-34-1	Bracket, Valve Retaining (Stainless Steel)
3	60-67-1	#8 X 1/2" Lg. Screw (Type B)
4	65-33-1	Bracket, Wall Mounting (Stainless Steel)



PF652GAP & PF652AG DUAL BALL VALVE ASSEMBLY		
NO.	PART NO.	DESCRIPTION
1	65-6	1/4" NPT Plug
2	65-30-1	1/4" NPT Tee
3	25-137-6U	1/4" NPT Nipple
4	65-10	Garden Hose Coupling
5	65-17-2	Hose Adapter Stem
6	100-38	Strainer Washer
7	65-7	1/4" NPT Ball Valve with Knob
8	65-31-3U	Adapter, Garden Hose X 1/4" NPT (brass)
9	65-11	Swivel Adapter Kit
10	65-2K	Knob
11	81-19-20	Knob Screw



PF652GAP-2M & PF652AG-2M DUAL BALL VALVE ASSEMBLY		
NO.	PART NO.	DESCRIPTION
1	61-121	1/4" Street Elbow
2	25-137-12U	1/4" NPT Nipple
3	65-30-1	1/4" NPT Tee
4	65-20-1	1/4" Spacer Plug (Solid)
5	65-7	1/4" NPT Ball Valve with Knob
6	65-31-3U	Adapter, Garden Hose X 1/4" NPT (brass)
7	25-51-12	1/4" NPT X 3/8" O.D. Tube Compression Fitting
8	65-2K	Knob
9	81-19-20	Knob Screw
10	25-137-6U	1/4" NPT Nipple



BACK FLOW/PROPORTIONING DEVICES, TIPS, & TUBING		
NO.	PART NO.	DESCRIPTION
1	16-30	ACTION GAP Assembly
2	61-22-3	Proportioner Assembly (4 GPM) w/Elbow
3	61-22-3BAG-EL2	AIR GAP Proportioner Ass'y (4 GPM) w/Elbow
4	100-15K	Mitering Tip Kit (14 Sizes)
5	100-12	1/4" I.D. X 8' Lg. Vinyl Tubing
6	61-107-2	Ceramic Weight (3/8" I.D.)
7	100-16E	Foot Valve Assembly (EPDM) - Std. Equipment
	100-16S	Foot Valve Assembly (Silicone) - Available
	100-16V	Foot Valve Assembly (Viton) - Available
8	61-21	1/2" I.D. X 6' Lg. Vinyl Tubing
9	63-83	9/16" I.D. X 6' Lg. Vinyl Tubing

