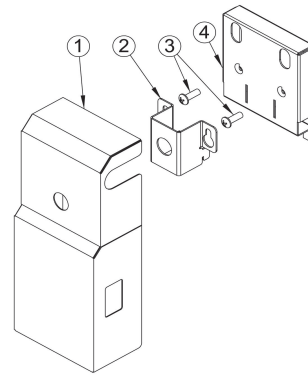


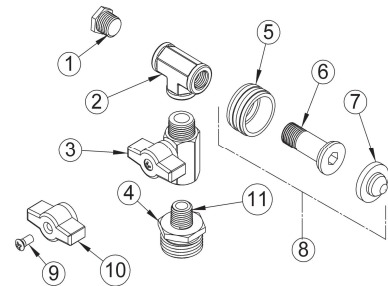
DEMA Pro-Fill I Sink Dispenser

MODELS PF651GAP, PF651AG, PF651GAP-1M, & PF651AG-1M

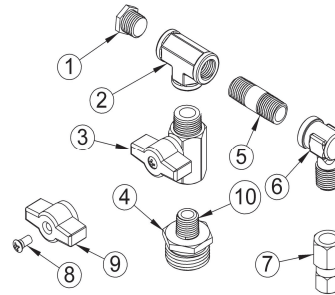
COVER, MOUNTING BRACKETS, AND HARDWARE		
NO.	PART NO.	DESCRIPTION
1	65-38-1	Cover, Dual Valve (Stainless Steel)
2	65-37-1	Bracket, Valve Retaining (Stainless Steel)
3	60-67-1	#8 X 1/2" Lg. Screw (Type B)
4	65-36-1	Bracket, Wall Mounting (Stainless Steel)



PF651GAP & PF651AG DUAL BALL VALVE ASSEMBLY		
NO.	PART NO.	DESCRIPTION
1	65-6	1/4" NPT Plug
2	65-30-1	1/4" NPT Tee
3	65-7	1/4" NPT Ball Valve with Knob
4	65-31-3U	Adapter, Garden Hose X 1/4" NPT (brass)
5	65-10	Garden Hose Coupling
6	65-17-2	Hose Adapter Stem
7	100-38	Strainer Washer
8	65-11	Swivel Adapter Kit
9	81-19-20	Knob Screw
10	65-2K	Knob
11	25-137-6U	1/4" NPT Nipple



PF651GAP-2M & PF651AG-2M DUAL BALL VALVE ASSEMBLY		
NO.	PART NO.	DESCRIPTION
1	65-6	1/4" NPT Plug
2	65-30-1	1/4" NPT Tee
3	65-7	1/4" NPT Ball Valve with Knob
4	65-31-3U	Adapter, Garden Hose X 1/4" NPT (brass)
5	25-137-12U	1/4" NPT Nipple
6	61-121	1/4" Street Elbow
7	25-51-12	1/4" NPT X 3/8" O.D. Tube Compression Fitting
8	81-19-20	Knob Screw
9	65-2K	Knob
10	25-137-6U	1/4" NPT Nipple



BACK FLOW/PROPORTIONING DEVICES, TIPS, & TUBING		
NO.	PART NO.	DESCRIPTION
1	16-30	ACTION GAP Assembly
2	61-22-3	Proportioner Assembly (4 GPM) w/Elbow
3	61-22-3BAG-EL2	AIR GAP Proportioner Ass'y (4 GPM) w/Elbow
4	100-15K	Metering Tip Kit (14 Sizes)
5	100-12	1/4" I.D. X 8' Lg. Vinyl Tubing
6	61-107-2	Ceramic Weight (3/8" I.D.)
7	100-16E	Foot Valve Assembly (EPDM) - Std. Equipment
	100-16S	Foot Valve Assembly (Silicone) - Available
	100-16V	Foot Valve Assembly (Viton) - Available
8	61-21	1/2" I.D. X 6' Lg. Vinyl Tubing
9	63-83	9/16" I.D. X 6' Lg. Vinyl Tubing

