

Stackable Countertop Cup Dispenser Cabinet

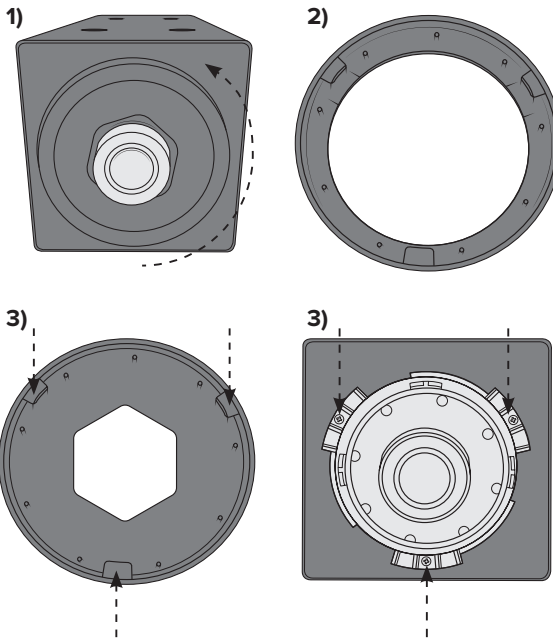
INSTRUCTION SHEET



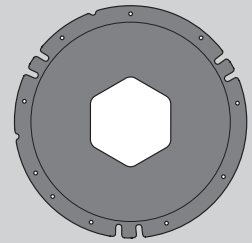
A INSTALLING THE GASKET

- 1) Detach the bezel ring and gasket by rotating bezel ring counterclockwise.
- 2) Install 1 gasket that correlates with the rim diameter of desired cup (shown on right). Avoid cutting or trimming gaskets.
- 3) Install the bezel ring and gasket by positioning the three alignment tabs of the bezel ring with the notches of the dispenser front plate.

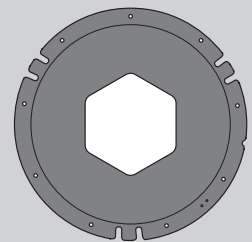
** If you need to change the cup size or swap out a gasket, repeat steps above. Before changing gasket, remove all cups from dispenser.*



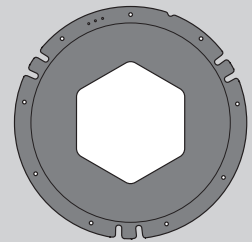
GASKET DIAGRAMS



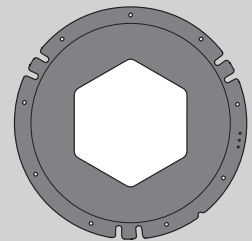
*Opening Diameter: 2³/₁₆"
*Cup Rim Diameters: 2⁷/₈"-3¹/₈"
*Cup Sizes: 8-12 oz.



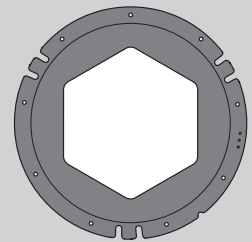
*Opening Diameter: 2¹/₂"
*Cup Rim Diameters: 3¹/₄"-3¹/₂"
*Cup Sizes: 14-22 oz.



*Opening Diameter: 3"
*Cup Rim Diameters: 3¹/₂"-3³/₈"
*Cup Sizes: 24-28 oz.



*Opening Diameter: 3¹/₄"
*Cup Rim Diameters: 3⁵/₈"-4¹/₈"
*Cup Sizes: 30-34 oz.

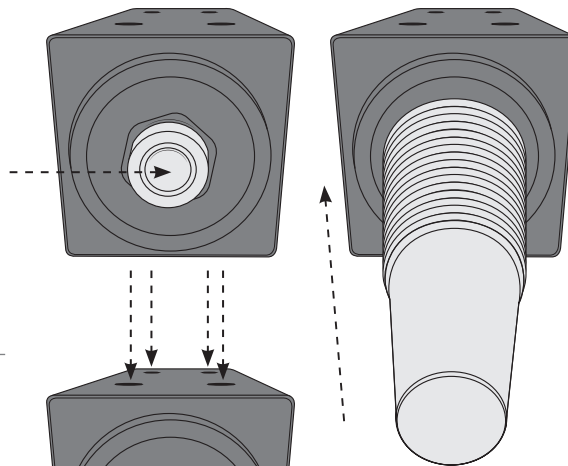


*Opening Diameter: 3³/₄"
*Cup Rim Diameters: 4¹/₄"-4³/₄"
*Cup Sizes: 36-44 oz.

**Approximate Measurements and Sizes*

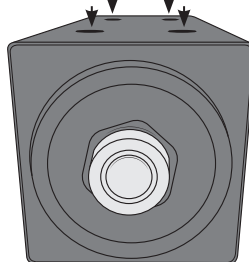
B LOADING THE DISPENSER

- 1) Remove cups of your choice from packaging.
- 2) Position cups over center of gasket with the bottom of the cups facing you.
- 3) Using one hand to secure the end of the dispenser, push cups through gasket until cups are secured inside the dispenser.



C STACKING THE DISPENSER

- 1) Position dispenser unit on countertop.
- 2) Position and lower second cabinet unit so that the feet of the top unit rest inside the top holes of the bottom unit.



D CLEANING THE DISPENSER

- 1) Detach the bezel ring and gasket from dispenser (pictured in A1).
- 2) Wash the bezel ring and gasket with hot soapy water.
- 3) To clean the tube, remove the (3) front screws (pictured in A3).
- 4) Wash tube clean with hot soapy water. Before reassembling unit, make sure all pieces are thoroughly dried.
- 5) Reassemble cabinet unit in reverse order of disassembly.

