

# SMART COUNTER DISPENSERS

DISPENSING SOLUTIONS THAT MAKE SENSE AND SAVE YOU MONEY

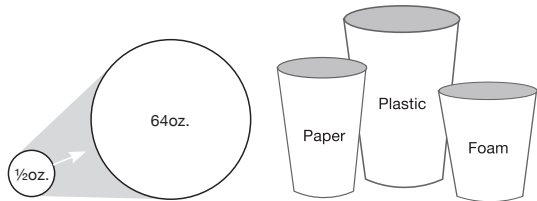


 **san jamar**<sup>®</sup>  
smart. safe. sanitary.

# How to select the dispenser that's right for your operation.

## CUP DISPENSERS

- 1** Choose your cup  
Determine size and cup material based on your application.

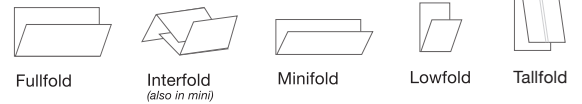


- 2** Determine your placement area  
In-Counter | Countertop | Surface Mount

- 3** Choose your dispenser  
Sentry® | Stainless Steel | EZ-Fit®

## NAPKIN DISPENSERS

- 1** Choose your napkin style



- 2** Determine your placement  
Countertop | Tabletop | Wall Mount | In-Counter

- 3** Choose your faceplate



## San Jamar dispensers make your countertop SMART.

San Jamar dispensers are UNIVERSAL in their ability to dispense cups or napkins of virtually any size or brand. Our dispensers save YOU MONEY by offering several control systems that have been designed to REDUCE WASTE, while providing speedy and smooth dispensing. And, the ease of using these dispensers eliminates costly training while the larger capacity reduces refills. No matter how you look at it, San Jamar's wide range of Countertop, In-Counter and Wall/Surface dispensers provide unmatched versatility and project a desirable image of food safety.

# San Jamar napkin dispensers

provide an upscale image in high capacity and a smooth dispensing solution.

Patented faceplate options are engineered to ensure true one-at-a-time dispensing. Not only does this help ensure cleaner countertops, it also reduces your paper costs up to 30% by eliminating waste.

## FULLFOLD

Choose from the largest selection of fullfold napkin dispensing options including Venue®, San Jamar's premier line of upscale dispensers that provide one-at-a-time dispensing at approximately half the cost.

**VENUE® COUNTERTOP**  
H5005TBK\*, H5005STBK\* (on stand), H5005CL\*, H5005SCL\* (on stand)

**COUNTERTOP**  
H3005CLXC\* (new), H3001XC, H3001BKC, H3001CLBK, H3001CLXC, H3001TBKKBK

**VENUE® TABLETOP**  
H4005TBK\*, H4005CTBK\* (with caddy)

**CLASSIC TABLETOP** H4001XC

**VENUE® WALL MOUNT**  
H5005PTBK\*, H5005PCL\*

**IN-COUNTER**  
H2005CLSS\*, H2001XC, H2001SS, H2001CLSS, H2005CLBK, H2005CLSC, H2005SC



## INTERFOLD

Our interfold napkin solutions provide you upscale dispensing solutions for the growing interfold napkin market. Choose from countertop, tabletop, or in-counter.

**VENUE® COUNTERTOP**  
H5003TBK, H5003CL

**VENUE® WALL MOUNT**  
H5003TBK, H5003CL

**IN-COUNTER**  
H2003CLSS, H2003CLBK, H2003CLSC



## MINIFOLD

Our minifold napkin dispensers are designed to simplify your dispensing needs by providing you with a solution for multiple applications such as countertop, tabletop, and in-counter.

**VENUE® COUNTERTOP**  
H5000CL\*, H5000SCL\* (on stand), H5000TBK\*, H5000STBK\* (on stand)

**VENUE® WALL MOUNT**  
H5000PCL\*, H5000PTBL\*

**VENUE® TABLETOP**  
H4000XC

**IN-COUNTER**  
H2000XC, H2000SS, H2000SC



## OTHER

Tallfold and lowfold napkin dispensers are designed to deliver a professional image to patrons and provide easy access to napkins at each table.

**TALLFOLD**  
H900BK, H900X,

**LOWFOLD**  
H985BK, H985X



VENUE™ PRODUCT  
COLOR CODE



Clear  
CL

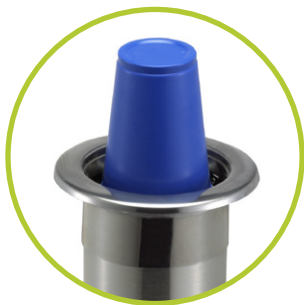


Black Pearl  
TBK

\* Control Face provides smooth dispensing while reducing napkin usage.



**San Jamar cup dispensers** combine innovative design and superior features to enhance your image and your bottom line. First, our cup dispensers are engineered with patented features that deliver gentle, yet precise one-at-a-time dispensing for virtually any size or type of cup. Plus, our intuitive adjustments reduce employee training and make using our dispensers easier than ever.



### STAINLESS STEEL

Stainless Steel Cup Dispensers are made to last. Constructed from 26-gauge stainless steel, these dispensers are attractive, durable and built to stand the test of time. They also offer tremendous versatility in mounting options, efficiently dispensing a wide range of cups.

**CUP SIZE:**  
6 - 10 oz, 12 - 24 oz, 32 - 46 oz

**MOUNTING:**  
In-Counter  
Box System  
Surface Mount [Elevator]  
Pull-Type



### SENTRY®

Sentry® Adjustable Cup Dispensers combine "one-size-fits-all" dispensing with a variety of smart sanitation features. An attractive trim ring prevents customer tampering and adjustable Lifetime Levers™ prevent cup damage during loading and dispensing.

**CUP SIZE:**  
8 - 44 oz

**MOUNTING:**  
In-Counter  
Surface Mount  
Box System



### EZ-FIT®

EZ-Fit® Cup Dispensers feature an innovative gasket that provides precise, yet smooth dispensing, while providing a complete seal around the rim of the cup to help prevent cross-contamination. This dispenser also handles the largest range of cup sizes (½ oz to 64 oz).

**CUP SIZE:**  
8 - 46 oz, ½ - 2½ oz., 32 - 64 oz

**MOUNTING:**  
In-Counter  
Surface Mount  
Box System

## LID DISPENSING



BOX SYSTEMS



DISPENSER KITS



LID TOWERS



EZ-FIT® LID DISPENSERS

## RELATED DISPENSING SOLUTIONS



FrontLine™



The Dome®

# A World of Difference

Sure, our “smart counter” dispensers are designed to solve your business challenges. But they’re designed to solve even bigger environmental challenges as well. Faceplates designed for one-at-a-time dispensing mean less waste and reduced paper usage. And because our dispensers accommodate universal paper choices, you can specify environmentally friendly recycled paper options. It’s just one more way San Jamar is working to “counter” the toughest dispensing challenges.

### Sentry® One-Size-Fits-All Counter-Mount and Surface-Mount Cup Dispensers

Item	Approx. Cup Size	Cup Rim Diameter	Length
C5450C	8-44oz. (236-1301ml)	3 1/8" - 4 1/2" (79-114mm)	23 1/2" (597mm)
C5450C18	8-44oz. (236-1301ml)	3 1/8" - 4 1/2" (79-114mm)	18" (457mm)
C5450SM Surface Mount	8-44oz. (236-1301ml)	3 1/8" - 4 1/2" (79-114mm)	23 1/2" (597mm)

### Euro Sentry® Counter-Mount and Surface-Mount Cup Dispensers

Item	Approx. Cup Size	Cup Rim Diameter	Length
C5250C	4-24oz. (101-710ml)	2 7/16" - 3 5/16" (62-92mm)	23 1/2" (597mm)
C5250C18	4-24oz. (101-710ml)	2 7/16" - 3 5/16" (62-92mm)	18" (457mm)
C5250SM Surface Mount	4-24oz. (101-710ml)	2 7/16" - 3 5/16" (62-92mm)	23 1/2" (597mm)

### Sentry® Countertop Beverage Center Cabinets

Item	Dimensions (H x W x D)	Cabinet
C2854 (4) C5450C with black trim rings	30 1/8" x 8 1/8" x 24 3/8" (768 x 206 x 619mm)	Stainless Steel
C2951BK (1) C5450C with black trim rings	7 3/4" x 7 3/4" x 23 3/4" (197 x 197 x 603mm)	Black ABS Plastic
C2952BK (2) C5450C with black trim rings	15 1/8" x 7 3/4" x 23 3/4" (384 x 197 x 603mm)	Black ABS Plastic

### Sentry® Dimension™ Beverage & Lid Cabinets

Item	Dimensions (H x W x D)	Cabinet
L22CS2951BK includes (1) C5450C, (1) L2200C, a straw compartment, black trim rings	22 3/8" x 7 3/4" x 25 3/8" (568 x 197 x 645mm)	Black ABS Plastic
L22C2951BK includes (1) C5450C, (1) L2200C, black trim rings	15 1/8" x 7 3/4" x 25 3/8" (384 x 197 x 635mm)	Black ABS Plastic

### EZ-Fit® One-Size-Fits-All Counter-Mount Cup Dispenser

Item	Approx. Cup Size	Cup Rim Diameter	Length
C2410C	8-46oz. (236-1360ml)	2 7/8" - 4 3/4" (73-121mm)	23 1/4" (590mm)
C2510C (Large Deli)	32-64oz. (946-1890ml)	4 7/8" - 5 5/8" (124-143mm)	22 1/2" (572mm)
C2010C (Portion Cup)	1/2 - 2 1/2oz. (15-70ml)	1 1/2" - 2 3/16" (38-59mm)	16" (406mm)
C2210C (EZ Fit Euro)	6-24oz. (178-710ml)	2 7/8" - 3 1/8" (73-94mm)	23 1/4" (590mm)

### EZ-Fit® Dimension™ Countertop Beverage Center Cabinets

Item	Dimensions (H x W x D)	Cabinet
C2901 includes (1) C2410C with metal finish trim rings	7 3/4" x 7 3/4" x 23 3/4" (197 x 197 x 603mm)	Black ABS Plastic
C2902BK includes (2) C2410C with black trim rings	15 1/8" x 7 3/4" x 23 3/4" (384 x 197 x 603mm)	Black ABS Plastic

### Stainless Steel Counter-Mount Beverage Cup Dispensers

Item	Approx. Cup Size	Cup Rim Diameter	Length
C3200CH	6-10oz (177-296ml)	2 7/32" - 3 7/16" (58-81mm)	23 1/2" (597mm)
C3400CH	12-24oz (355-710ml)	2 3/4" - 3 7/8" (70-98mm)	23 1/2" (597mm)
C3500CH	32-46oz (946-1360ml)	4" - 4 7/8" (101-124mm)	23 1/2" (597mm)

### Stainless Steel Surface Mount (Elevator) Beverage Cup Dispensers

Item	Approx. Cup Size	Cup Rim Diameter	Length
C3200EH	6-10oz (177-296ml)	2 7/32" - 3 7/16" (58-81mm)	23 1/2" (597mm)
C3400EH	12-24oz (355 - 710ml)	2 3/4" - 3 7/8" (70 - 98mm)	23 1/2" (597mm)
C3500EH	32-46oz (946-1360ml)	4" - 4 7/8" (101-124mm)	23 1/2" (597mm)

### Stainless Steel Pull-Type Beverage Cup Dispensers

Item	Approx. Cup Size	Cup Rim Diameter	Length
C3200P	6-10oz (177-296ml)	2 7/32" - 3 7/16" (58-81mm)	23 1/2" (597mm)
C3400P	12-24oz (355-710ml)	2 3/4" - 3 7/8" (70-98mm)	23 1/2" (597mm)
C3500P	32-46oz (946-1360ml)	4" - 4 7/8" (101-124mm)	23 1/2" (597mm)

### EZ-Fit® Counter-Mount Lid Dispensers

Item	Approx. Cup Size	Lid Rim Diameter	Length
L2200C	8-24oz (236-710 ml)	2 3/4" - 3 3/4" (70-95mm)	23 3/4" (604mm)
L2400C	24-46oz (710-1360 ml)	3 3/4" - 4 1/2" (95-114mm)	23 3/4" (604mm)

### Dispenser Kit & Stand

Item	Dimensions
C3620 kit includes: C3604, L3402, C3200P, C3400P	36"h x 12"w x 12"d (914h x 305w x 305d mm)
C3604 Stand only	Base: 10" diameter (254mm)

### Lid Towers

Item	Dimensions
L2203 (3) lid compartments (1) straw compartment	24 1/2" x 5 1/2" x 13" (622 x 140 x 330mm)

### EZ-Fit® Lid Dispensers Box System

Item	Dimensions
L2912 (1) L2200C, (1) L2400C metal finish trim rings	15 1/8" x 7 3/4" x 25" (384 x 197 x 635mm)

### Fullfold (Control Face) Napkin Dispensers

Type	Item	Capacity
Countertop Venue®	H5005TBK, H5005CL	450
Countertop Stand Venue®	H5005STBK, H5005SSL	450
Wall Venue™	H5005PTBK, H5005PCL	500
Tabletop Venue®	H4005TBK	200
In-Counter	H2005CLSS	750+
Countertop	H3005CLXC	300

### Fullfold (Classic Face) Napkin Dispensers

Type	Item	Capacity
Countertop	H3001CLBK, H3001XC, H3001BKC, H3001CLXC, H3001TBKKB	300
Tabletop	H4001XC	170
In-Counter	H2001XC, H2001SS, H2001CLSS, H2001SC	750+

### Interfold Napkin Dispensers

Type	Item	Capacity
Countertop Venue®	H5003TBK, H5003CL	550
Wall Venue™	H5003PTBK, H5003PCL	500+
Tabletop Venue®	H4003TBK	200
In-Counter	H2003CLSS	750+

### Other Napkin Dispensers

Type	Item	Capacity
Tallfold	H900X, H900BK	150
Lowfold	H985X, H985BK	150

Learn how San Jamar Dispensers improve the performance and image of key service environments.

[www.sanjamar.com](http://www.sanjamar.com)

**San Jamar**  
555 Koopman Lane  
Elkhorn, Wisconsin 53121  
USA  
T: +1.262.723.6133  
F: +1.262.723.4204  
info@sanjamar.com  
www.sanjamar.com

**Canada**  
3300 Bloor Street West  
Center Tower, 11th Floor  
Suite 3140 Toronto, ON  
M8X 2X3  
CANADA  
T: +1.416.760.7367  
F: +1.416.207.2071  
canada@sanjamar.com

**Europe**  
Schoorstraat 26a, bus 1  
2220 Heist op-den Berg  
BELGIUM  
T: +32 1522 8140  
F: +32 1522 8148  
emea@sanjamar.com

**México**  
Av. Universidad #1377-701  
Colonia Axotla CP 01030  
Del. Alvaro Obregón  
MEXICO, D.F.  
T: +52 (55) 3626 0772  
F: +52 (55) 5273 4495  
mexico@sanjamar.com

 **san jamar**  
smart. safe. sanitary.

Z080505E RevA