

SPARE RIBS

SKU	PRODUCT DESCRIPTION	PIECES SIZE (LB.)	FRESH/FROZEN	PKG DESCRIPTION	PC/CS	AVG. CS WT	SHELF LIFE (DAYS)
1341	Farm Promise® No Antibiotics Ever Spare Rib, 2pc.	5.2 & down	Frozen	Vacuum Sealed	6	35 lb.	365
1633	Farm Promise® No Antibiotics Ever Spare Rib, 1pc.	5.2 & down	Fresh	Vacuum Sealed	6	30 lb.	21
1120	Hatfield® Spare Rib	5.2 & down	Fresh	Paper Wrapped	8	41 lb.	7
1658	Hatfield® Spare Rib, 3 pc.	5.2 & down	Fresh	Vacuum Sealed	9	37 lb.	18
1119	Hatfield® Spare Rib	5.0 and up	Fresh	Paper Wrapped	7	32 lb.	7
1129	Hatfield® Spare Rib, 2pc.	Natural Fall	Fresh	Vacuum Sealed	8	26 lb.	21
1252	Hatfield® Spare Rib	Natural Fall	Frozen	Poly Bag	8	41 lb.	270

BBQ STYLE SPARE RIBS

SKU	PRODUCT DESCRIPTION	PIECES SIZE (LB.)	FRESH/FROZEN	PKG DESCRIPTION	PC/CS	AVG. CS WT	SHELF LIFE (DAYS)
1907	Farm Promise® No Antibiotics Ever BBQ Spare Rib, 2pc.	Natural Fall	Frozen	Vacuum Sealed	6	27 lb.	365
1123	Hatfield® BBQ Spare Rib, 2pc.	Natural Fall	Fresh	Vacuum Sealed	8	29 lb.	21
1121	Hatfield® BBQ Spare Rib	Natural Fall	Fresh	Poly Bag	10	30 lb.	7

ST. LOUIS STYLE SPARE RIBS

SKU	PRODUCT DESCRIPTION	PIECES SIZE (LB.)	FRESH/FROZEN	PKG DESCRIPTION	PC/CS	AVG. CS WT	SHELF LIFE (DAYS)
1837	Farm Promise® No Antibiotics Ever St. Louis Rib, 1pc.	2.5-3.0	Frozen	Vacuum Sealed	12	38 lb.	365
1743	Farm Promise® No Antibiotics Ever St. Louis Rib	2.5-3.0	Fresh	Vacuum Sealed	12	38 lb.	18
1804	Farm Promise® No Antibiotics Ever St. Louis Rib, 1pc.	2.5 & down	Frozen	Vacuum Sealed	10	28 lb.	365
1902	Hatfield® Premium Reserve® St. Louis Rib	2.5-3.0	Frozen	Vacuum Sealed	6	16.5 lb.	365
1304	Hatfield® St. Louis Rib	1.75-2.0	Frozen	Sleeve Pack	16	30 lb.	270
1232	Hatfield® St. Louis Rib	2-2.25	Frozen	Sleeve Pack	16	32 lb.	270
1224	Hatfield® St. Louis Rib	2.25-2.5	Frozen	Poly Bag	14	33 lb.	270
1200	Hatfield® St. Louis Rib	2.5-2.75	Frozen	Sleeve Pack	12	32 lb.	270
1229	Hatfield® St. Louis Rib	2.75-3.0	Frozen	Sleeve Pack	12	34 lb.	270
1839	Hatfield® St. Louis Rib, 3pc.	Natural Fall	Fresh	Vacuum Sealed	10	35 lb.	21
1189	Hatfield® St. Louis Rib	Natural Fall	Fresh	Layer Pack Poly Bag	10	31 lb.	7

POWERED BY
CLEMENS
 FOOD GROUP
 MB-FS-RIBS-0001-0919

Need help choosing the rib that's right for your operation?
 Call 800.523.5291 today to talk to a Clemens Food Group rib expert.
ClemensFoodGroup.com



A FRESH PERSPECTIVE ON PORK

RIBS



The partner that delivers consistency, quality and transparency.



New state-of-the-art plant in Coldwater, MI

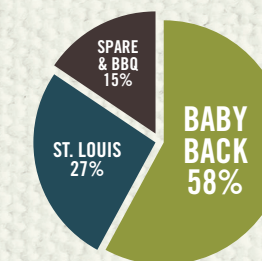
NEW! Sleeved rib pack

- Highly automated fresh pork facility for extremely consistent specifications
- Our Snap Chill system is widely considered to be the world's most effective in ensuring freshness of pork
- Rib line upgrade to maximize consistency
- Paper wrap options as a sustainable solution for fresh product

PORK RIBS ARE THE #1 FASTEST GROWING PORK DISH IN THE U.S.



FOODSERVICE RIBS MAKE UP 17% OF TOTAL PORK VOLUME (651MM lbs. in 2017)²



BABY BACK RIBS, AT 58% ARE THE MOST COMMON VARIETY²

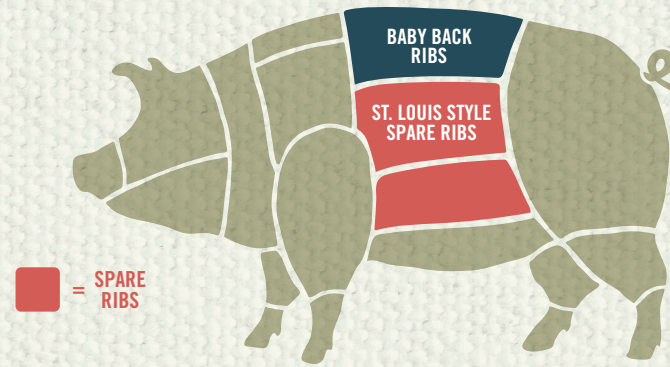
1 Technomic Center of the Plate: Beef & Pork Consumer Trend Report 2017 • 2 Technomic Volumetric Assessment of Pork in Foodservice, Update 2017 • 3 Technomic Menu Monitor 2017

Great Pork Starts with A Fresh Perspective on Bringing You Value.

At Clemens Food Group, we provide ethically raised pork from family farms through our brands. Pork is what we do best, so you can feel confident serving your customers with the highest quality products.

RIBS 101

CHOOSE YOUR STYLE:



LOWER COST PER POUND



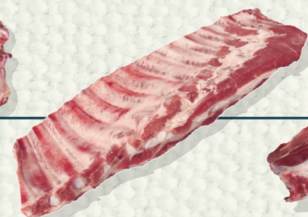
SPARE RIBS

- Highly versatile: Breast bone and brisket intact
- Use breast bone for stock development
- Use brisket meat as trim for other applications



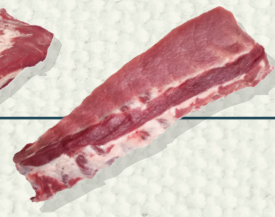
BBQ STYLE SPARE RIBS

- These ribs are produced by removing the breast bone for a better eating experience
- Brisket meat intact for plate cost management
- Eliminate waste



ST. LOUIS STYLE SPARE RIBS

- Machine cut for consistency
- Sized, Uniform in shape
- New sleeve packing provides easy end user utilization



BABY BACK RIBS

- More tender eating experience than St. Louis
- Highly desired meat-to-bone ratio due to carcass breakdown maximization
- New sleeve packing provides easy end user utilization

PREMIUM & LOWER LABOR COST

SPARE RIBS

- This rib is cut from the belly and contains at least 11 ribs
- Spare ribs are the largest and most versatile rib offering with a firm bite and the ability to breakdown into a BBQ or St. Louis style offering at the customer level

BBQ STYLE SPARE RIBS

- These ribs are produced by removing the breast bone from the spare rib
- They can be easily divided into pieces for a more cost effective rib

ST. LOUIS STYLE SPARE RIBS

- CFG DIFFERENCE:** New Sleeve packaging provides easy end user utilization
- Rectangular in shape and easily portioned
- Provides even plate coverage and has higher yields than a spare rib

BABY BACK RIBS

- CFG DIFFERENCE:** Our carcass breakdown processes maximize our ability to offer the premium baby back rib sizes without compromising on meat to bone ratio
- The baby back rib is located between the belly and chine (back) bone
- Rectangular in shape, most tender eating experience of the fresh rib varieties
- 2 types
 - Peeled:** the membrane is removed, allowing sauces and dry rubs to better marinate the ribs prior to cooking.
 - Unpeeled:** the membrane is kept on to retain more moisture during the cooking process

CLEMENS FOOD GROUP

Family Owned. American Made. Ethically Raised. Raised without Growth Promotants.



PREMIUM RESERVE PORK



Farm Promise® delivers no antibiotics ever, vegetarian-fed, ethically raised pork with consistently fresh flavor

Hatfield® Premium Reserve Pork® is steakhouse quality and delivers consistent performance for a higher cook yield and longer hold times

Hatfield® delivers a wide variety of on-trend offerings that can make any menu even more delicious

BABY BACK RIBS

SKU	PRODUCT DESCRIPTION	PIECES SIZE (LB.)	FRESH/FROZEN	PKG DESCRIPTION	PC/CS	AVG. CS WT	SHELF LIFE (DAYS)
6164	Farm Promise® No Antibiotics Ever Baby Back Rib, Unpeeled, 1pc.	2.1 & Up	Fresh	Vacuum Sealed	12	30 lb.	24
1856	Farm Promise® No Antibiotics Ever Baby Back Rib, Unpeeled, 1pc.	2.5 & Down	Frozen	Vacuum Sealed	10	28 lb.	270
1340	Farm Promise® No Antibiotics Ever Baby Back Rib, Unpeeled, 1pc.	3.0 & Down	Frozen	Vacuum Sealed	12	36 lb.	365
1218	Hatfield® Baby Back Rib, Unpeeled	1.75 & Down	Frozen	Sleeve Pack	20	34 lb.	270
1397	Hatfield® Baby Back Rib, Peeled	1.75 & Down	Frozen	Sleeve Pack	20	35 lb.	270
1277	Hatfield® Baby Back Rib, Unpeeled	2.0 & Down	Frozen	Sleeve Pack	18	32 lb.	270
1270	Hatfield® Baby Back Rib, Peeled	2.0 & Down	Frozen	Sleeve Pack	18	36 lb.	270
1294	Hatfield® Baby Back Rib, Unpeeled	2.25 & Down	Frozen	Sleeve Pack	14	31 lb.	270
1230	Hatfield® Baby Back Rib, Peeled	2.25 & Down	Frozen	Sleeve Pack	14	30 lb.	270
1208	Hatfield® Baby Back Rib, Unpeeled	2.5 & Down	Frozen	Sleeve Pack	14	35 lb.	270
1332	Hatfield® Baby Back Rib, Peeled	2.5 & Down	Frozen	Sleeve Pack	14	35 lb.	270
1268	Hatfield® Baby Back Rib, Unpeeled	2.5-3.0	Frozen	Sleeve Pack	14	36 lb.	270
1392	Hatfield® Baby Back Rib, Unpeeled, 1pc.	2.75 & Down	Fresh	Vacuum Sealed	12	22 lb.	18
1053	Hatfield® Baby Back Rib, Unpeeled, 1pc.	Natural Fall	Fresh	Vacuum Sealed	12	28 lb.	18
1333	Hatfield® Baby Back Rib, Unpeeled, 1pc.	Natural Fall	Frozen	Vacuum Sealed	12	36 lb.	365
1146	Hatfield® Baby Back Rib, Unpeeled, 2pc.	Natural Fall	Fresh	Vacuum Sealed	16	33 lb.	18
1157	Hatfield® Baby Back Rib, Unpeeled, 3pc.	Natural Fall	Fresh	Vacuum Sealed	16	33 lb.	21
1313	Hatfield® Baby Back Rib Portions, 1-2 Bones	Portions	Frozen	Poly Bag	N/A	30 lb.	270
1315	Hatfield® Baby Back Rib Portions, 3+ Bones	Portions	Frozen	Poly Bag	N/A	40 lb.	270
1260	Hatfield® Baby Back Rib Portions, 3+ Bones	Portions	Frozen	Poly Bag	N/A	10 lb.	270
1335	Hatfield® Baby Back Rib Portions, 3-4 Bones	Portions	Frozen	Poly Bag	N/A	30 lb.	270
1836	Hatfield® Baby Back Rib Portions, 5 Bones	Portions	Frozen	Poly Bag	N/A	30 lb.	270