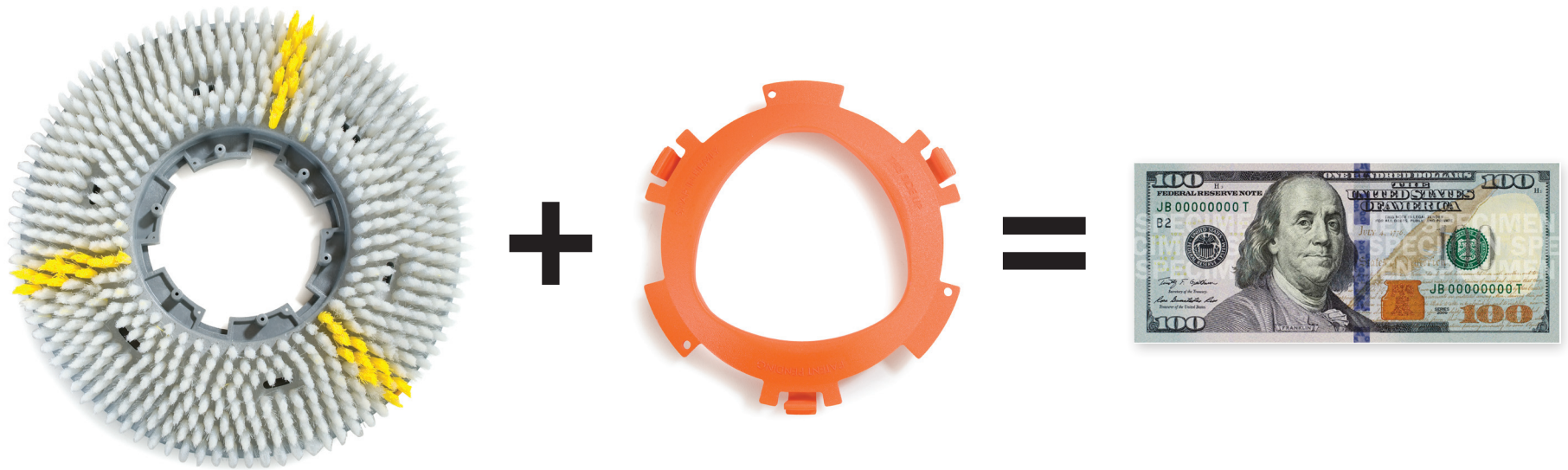


It's EZ



"We have regularly used the Daily Cleaning Brush on multiple floor surfaces for well over a year. The brushes last a long time, work on many surfaces, and are gentle to the VCT finish and gloss."

Mike M. | Building Supervisor
Event Center

"I've tested the Carlisle black rotary stripping brush and my eyes have certainly been opened. The brush worked great and I am now comfortable taking on more floor stripping and refinishing jobs."

Doug D. | Owner/Manager
Building Service Contractor

"The Carlisle Daily Cleaning Brush works great and saved us time and money. Our floor finish lasts longer after switching from floor pads to brushes."

Jeff E. | Owner
Contract Cleaning Service

[Learn More »](#)

EZSnap™

Floor Care System

Sustainable • Innovative • Profitable

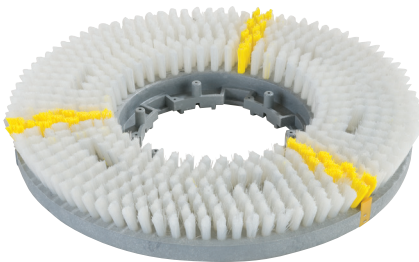
Your Potential Savings

If You Use 100 Pads Per Month

\$7,200 Annual Cost for 1,200 floor pads

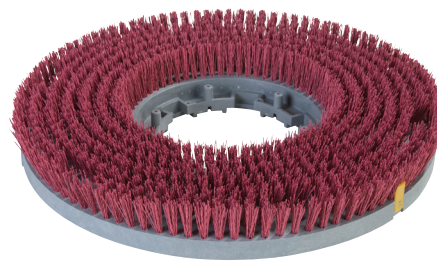
\$1,740 Annual Cost for 12 floor brushes

\$5,460 Annual Savings



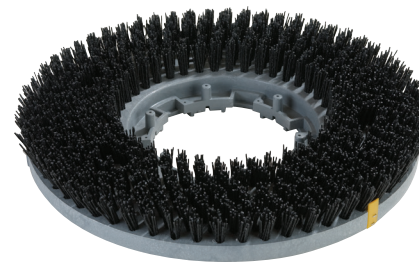
Daily Cleaning Brush Replaces White Floor Pads

- Specifically designed for daily cleaning and maintaining of all high gloss floor surfaces
- Ideal for use on ceramic tile, concrete, marble, quarry tile, slate, terrazzo and VCT



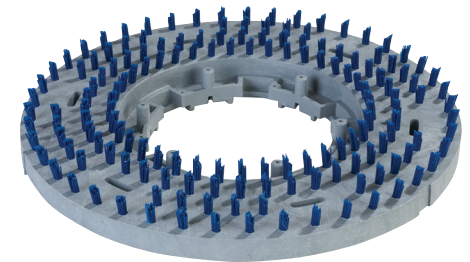
Red Cleaning Brush Replaces Red Floor Pads

- For medium to mildly aggressive cleaning of ceramic tile, concrete, marble, non-slip flooring, quarry tile, rubber, slate, terrazzo and VCT
- .022" nylon fibers impregnated with 120 grit silicon carbide



Scrubbing/Stripping Brush Replaces Black Floor Pads

- Excellent for scrubbing concrete and stripping quarry tile, terrazzo and VCT
- .050" nylon fibers impregnated with 80 grit silicon carbide



Short Trim Pad Driver

- 0.5" long, polypropylene bristles unevenly trimmed and widely spaced for excellent holding power

To see how you can save even more money visit www.carlislefsp.com/ez

Interesting Facts

Assuming an average pad diameter of 16"

- This amount of floor pads would cover 798 football fields
- The cubic volume could fill 1,243 semi-truck trailers or 47 Olympic-sized pools
- Laid end-to-end, the annual amount of pads used would extend 8,291 miles
- That's more than 3x the distance between New York City and Los Angeles!

CARLISLE
SANITARY MAINTENANCE PRODUCTS

©2016 Carlisle FoodService Products
Oklahoma City, OK 73131
www.carlislefsp.com | 800.654.8210