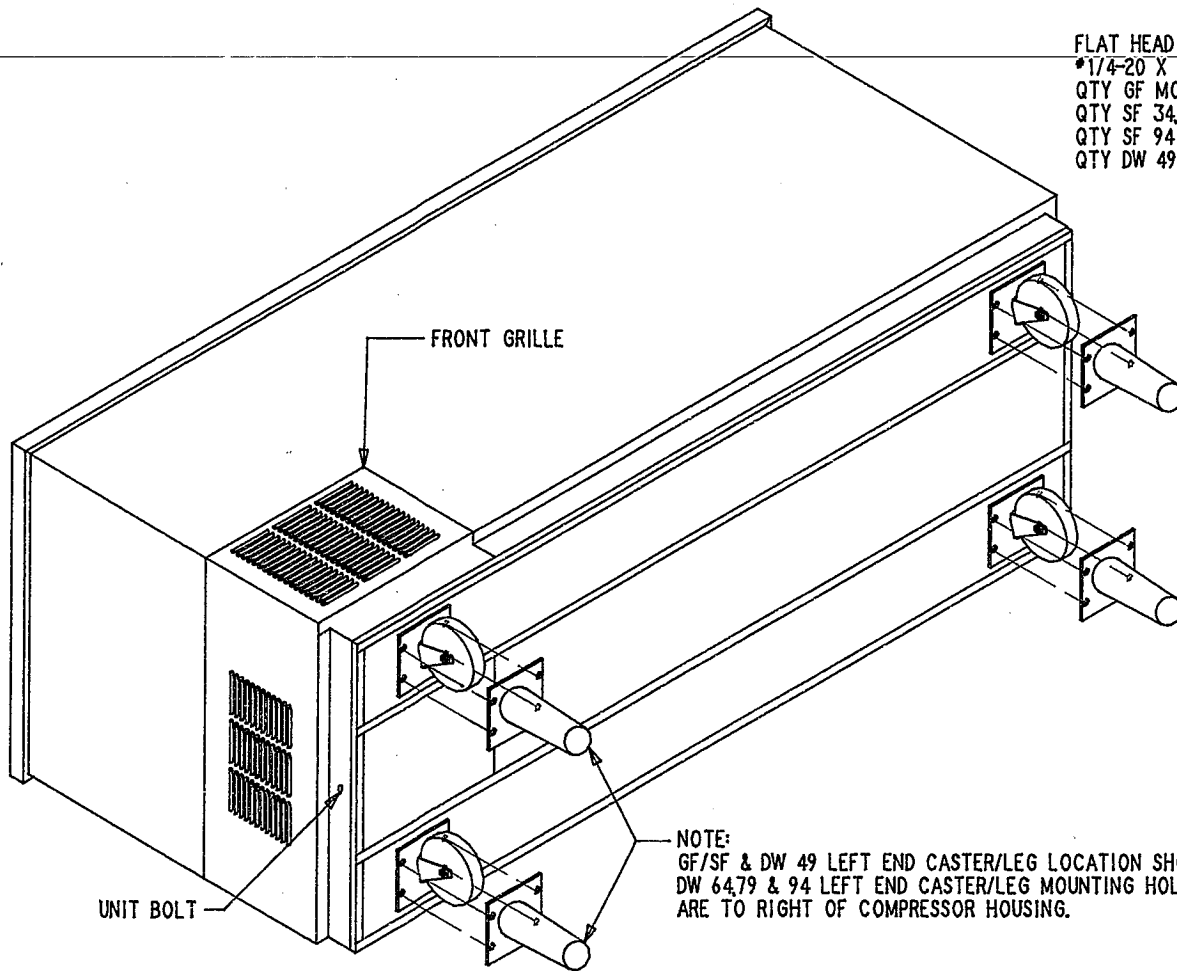


IL-1670B

GF / SF / DW CASTER / LEG KITS
EN 4716 : REV. (A)

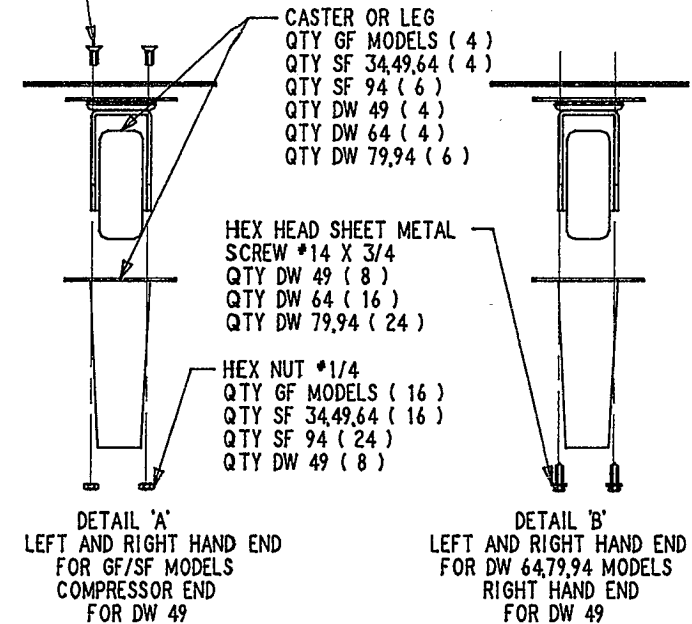
FLAT HEAD MACHINE SCREW
#1/4-20 X 3/4
QTY GF MODELS (16)
QTY SF 34,49,64 (16)
QTY SF 94 (24)
QTY DW 49 (8)



FRONT GRILLE

UNIT BOLT

NOTE:
GF/SF & DW 49 LEFT END CASTER/LEG LOCATION SHOWN.
DW 64,79 & 94 LEFT END CASTER/LEG MOUNTING HOLES
ARE TO RIGHT OF COMPRESSOR HOUSING.



CASTER OR LEG
QTY GF MODELS (4)
QTY SF 34,49,64 (4)
QTY SF 94 (6)
QTY DW 49 (4)
QTY DW 64 (4)
QTY DW 79,94 (6)

HEX HEAD SHEET METAL
SCREW #14 X 3/4
QTY DW 49 (8)
QTY DW 64 (16)
QTY DW 79,94 (24)

HEX NUT #1/4
QTY GF MODELS (16)
QTY SF 34,49,64 (16)
QTY SF 94 (24)
QTY DW 49 (8)

DETAIL 'A'
LEFT AND RIGHT HAND END
FOR GF/SF MODELS
COMPRESSOR END
FOR DW 49

DETAIL 'B'
LEFT AND RIGHT HAND END
FOR DW 64,79,94 MODELS
RIGHT HAND END
FOR DW 49

INSTALLATION OF CASTERS OR LEGS FOR GF/SF :

1. DISCONNECT ELECTRIC POWER SUPPLY.
2. REMOVE FRONT AND REAR GRILLES. REMOVE DRAIN PAN. REMOVE UNIT BOLT TO ALLOW EASY FRONT TO REAR MOVEMENT OF REFRIGERATION UNIT.
3. ELEVATE THE CABINET AND BLOCK IT AT A SUFFICIENT HEIGHT TO ALLOW THE CASTERS/LEGS TO BE POSITIONED BENEATH THEIR RESPECTIVE HOLES PROVIDED IN CABINET BASE. ATTACH THE CASTERS/LEGS TO THE CABINET USING (8) OF THE FLAT HEAD SCREWS AND NUTS (SEE DETAIL 'A'). TIGHTEN WITH APPROPRIATE WRENCHES.
4. ON RIGHT SIDE END INSTALL CASTERS/LEGS UNDER BASE FLANGE. ALIGN HOLES. INSERT REMAINING SCREWS FROM TOP DOWN (SEE DETAIL 'A'). SECURE USING REMAINING NUTS. TIGHTEN WITH APPROPRIATE WRENCHES.
5. REPLACE DRAIN PAN AND UNIT BOLT, REPOSITION DRAIN TUBE AND REPLACE GRILLES.
6. RECONNECT TO ELECTRIC POWER SUPPLY.

INSTALLATION OF CASTERS OR LEGS FOR DW 49 :

1. DISCONNECT ELECTRIC POWER SUPPLY.
2. SLIDE LIDS BACK TO FULLY OPEN AND REMOVE ANY PRODUCT FROM THE CABINET.
3. REMOVE FRONT AND REAR GRILLE. RAISE LEFT END OF CABINET HIGH ENOUGH TO EASILY ATTACH CASTER/LEGS TO CABINET. REMOVE UNIT BOLT TO ALLOW EASY FRONT TO REAR MOVEMENT OF REFRIGERATION UNIT. REMOVE DRAIN PAN AND INSERT (8) FLAT HEAD SCREWS PROVIDED INTO APPROPRIATE HOLES. AS IN DETAIL 'A', ATTACH CASTERS/LEGS USING NUTS PROVIDED. TIGHTEN WITH APPROPRIATE WRENCHES. REPLACE DRAIN PAN AND UNIT BOLT, REPOSITION DRAIN TUBE AND REPLACE GRILLES.
4. PLACE SOFT PAD BY REAR OF UNIT AND CAREFULLY TIP CABINET ON ITS BACK.
5. ATTACH CASTERS/LEGS TO CABINET AT RIGHT END USING (8) HEX HEAD SCREWS PROVIDED. TIGHTEN WITH APPROPRIATE WRENCHES (SEE DETAIL 'B'). RETURN CABINET TO UPRIGHT POSITION. NOTE: CABINET MUST REMAIN IN UPRIGHT POSITION FOR 30 MINUTES BEFORE RECONNECTING TO POWER SUPPLY.
6. RECONNECT TO ELECTRIC POWER SUPPLY. CLOSE LIDS.
7. REPLACE PRODUCT WHEN CABINET HAS REACHED OPERATING TEMPERATURE.

INSTALLATION OF CASTERS OR LEGS FOR DW 64,79,94 :

1. DISCONNECT ELECTRIC POWER SUPPLY.
2. SLIDE LIDS BACK TO FULLY OPEN AND REMOVE ANY PRODUCT FROM THE CABINET.
3. PLACE SOFT PAD BY REAR OF UNIT AND CAREFULLY TIP CABINET ON ITS BACK.
4. ATTACH CASTERS/LEGS TO CABINET USING THE HEX HEAD SCREWS PROVIDED. TIGHTEN WITH APPROPRIATE WRENCHES (SEE DETAIL 'B'). RETURN CABINET TO UPRIGHT POSITION. NOTE: CABINET MUST REMAIN IN UPRIGHT POSITION FOR 30 MINUTES BEFORE RECONNECTING TO POWER SUPPLY.
5. RECONNECT TO ELECTRIC POWER SUPPLY. CLOSE LIDS.
6. REPLACE PRODUCT WHEN CABINET HAS REACHED OPERATING TEMPERATURE.