

OTHER TMI PRODUCTS



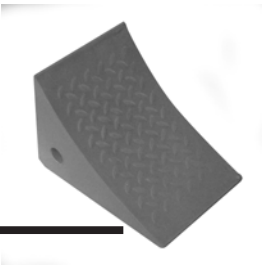
Air Curtains



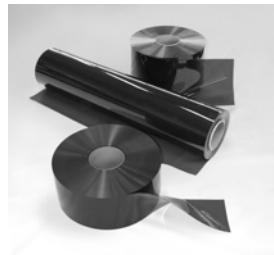
Strip Doors



Warehouse Safety



Dock Safety



Bulk PVC



Food Service Solutions



800-888-9750

TMI • 5350 Campbells Run Road • Pittsburgh, PA 15205-9738 • 412.787.9750
Fax: 412.787.3665 • Web Site: www.tmi-pvc.com • Email: info@tmi-pvc.com

PERSONNEL STRIP DOOR

READ ME FIRST INSTALLATION INSTRUCTIONS



PSD-8-S-4080



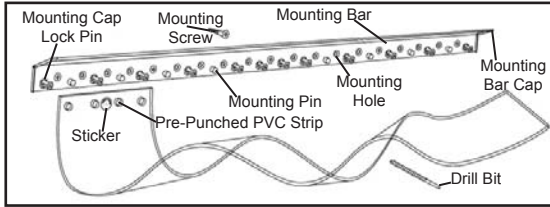
GETTING STARTED...

Remove the Mounting Bar. Do not remove the PVC strips from the carton until ready for installation.

NOTE: When multiple strip doors are ordered, all carton(s) will be properly tagged.

All strip doors are shipped complete with the following:

- 1 - 40" Mounting Bar
- 5 - 3/16" x 1 1/4" Mounting Screws
- 1 - 1/8" Drill Bit
- Pre-Punched PVC Strips

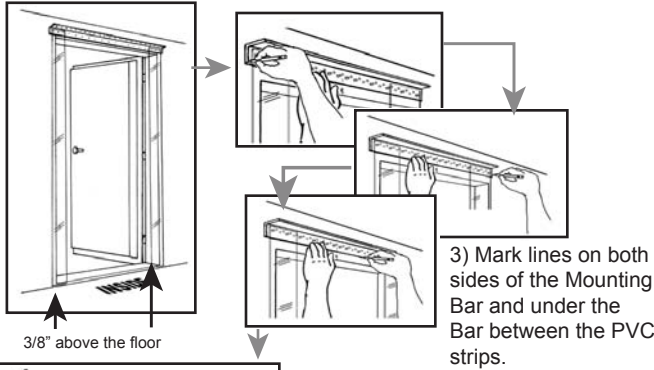


FIRST: ATTACH THE MOUNTING BAR

IMPORTANT: Install your PSD on the inside or interior of the doorway.

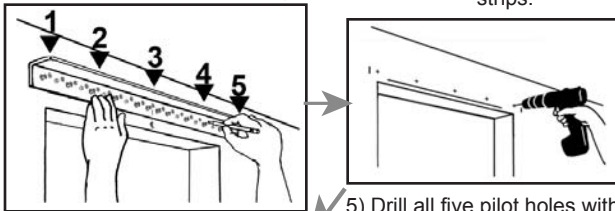
1) Temporarily attach a PVC strip to both ends of the Mounting Bar.

2) Center and level the bar above the opening so the strips are 3/8" above the floor.

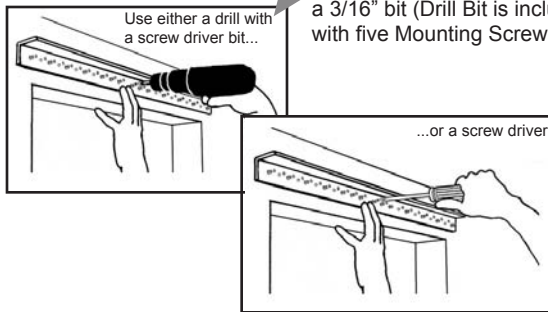


3) Mark lines on both sides of the Mounting Bar and under the Bar between the PVC strips.

4) Remove the PVC strip, replace the bar along the lines and mark five evenly spaced mounting holes.



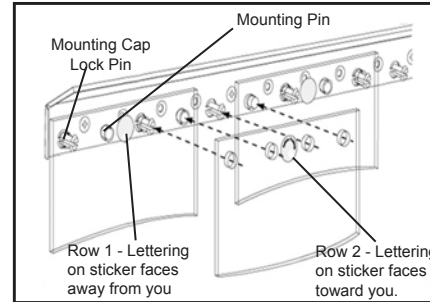
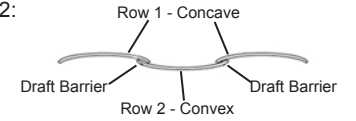
5) Drill all five pilot holes with a 3/16" bit (Drill Bit is included with five Mounting Screws)



6) Attach the Mounting Bar using the five supplied Mounting Screws.

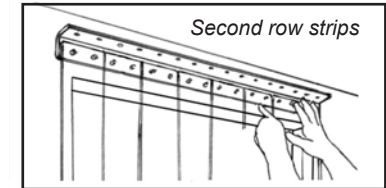
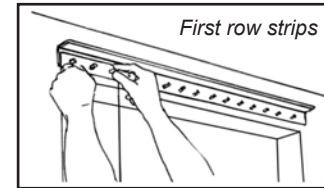
SECOND: HANG THE PVC STRIPS

IMPORTANT: All PVC strips have a natural curve across the width of the material. When hung properly (row 1: concave - row 2: convex), it creates a barrier against drafts.

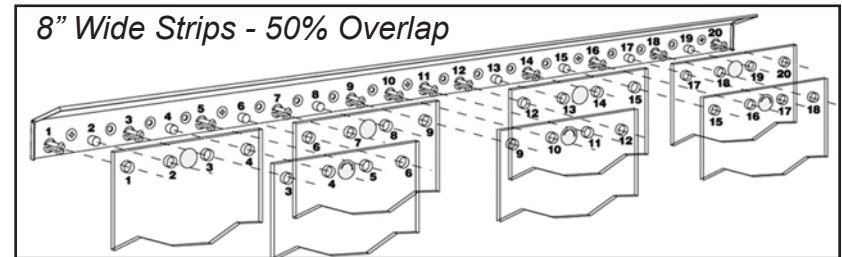


Stickers have been applied to each PVC strip. Attach each PVC Strip by pushing the pre-punched holes over the Mounting Pins and the Mounting Cap Lock Pins on the Mounting Bar.

IMPORTANT:
First row strips - Lettering on the sticker should face away from you.
Second row strips - Lettering on the sticker should face toward you.



Overlap Configuration



THIRD: CLOSE THE CAP

Finally push the Mounting Bar Cap Shut.

