



Ice Machine Cleaning & Sanitizing

HOSHIZAKI

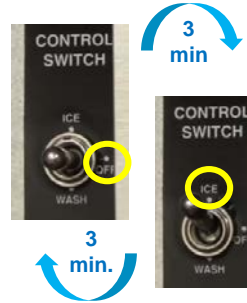
KMS-830MLH



The ice maker must be cleaned & sanitized at least once a year.

Cleaning Prep:

- 1 Remove the **Front Panel**, move the control switch to **OFF**. After 3 min., move the switch to **ICE**, then replace the panel.
 - 2 After 3 min., remove the **Front Panel**, move the switch to **OFF**.
 - 3 Remove all ice from the ice storage bin and/or dispenser.
- ⚠ WARNING! IF ON DISPENSER**, turn off the dispenser power supply after dispensing all the leftover ice.

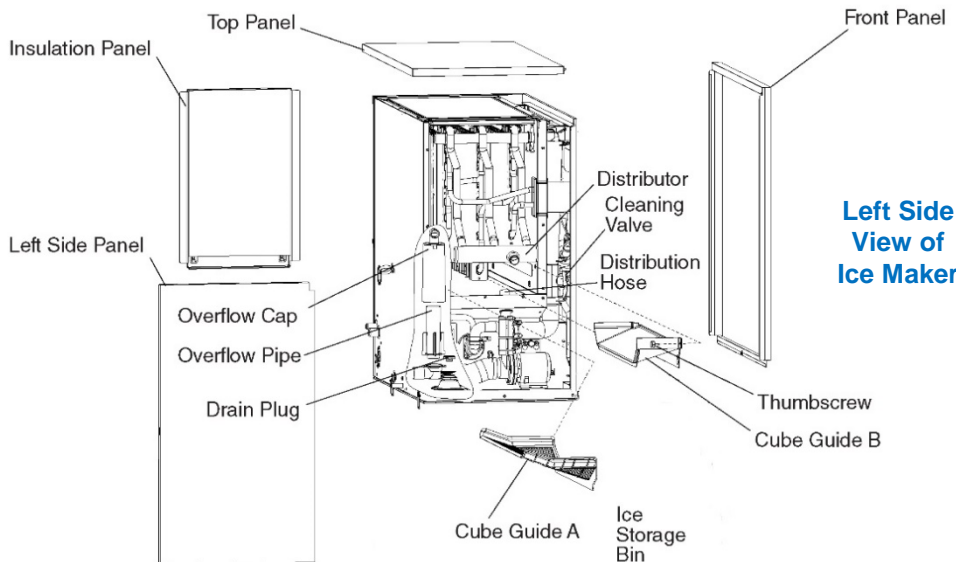


⚠ WARNING!
DO NOT leave icemaker unattended when panels are off

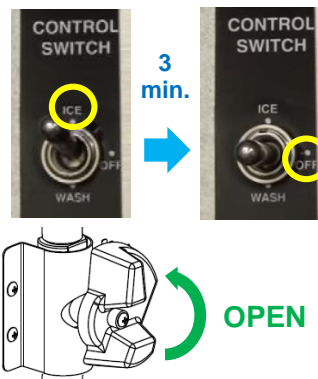
Sanitizing:

- Fill the water tank 17
 - **CLOSE** the cleaning valve
 - Move control switch to ICE, replace the front panel
 - After 3 minutes, remove the front panel
 - Move control switch to OFF
 - Remove the top, left, and insulation panels 18
 - Pour **.78 fl. oz (23 ml)** of chlorine bleach* into the water tank
 - Replace the top, left, and insulation panels
 - **OPEN** the cleaning valve
- * Use bleach without additives. Additives cause excessive foaming, and reduces effectiveness of the cleaning.

Cleaning:



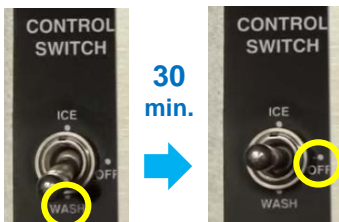
- 4 Remove the **Top, Left, and Insulation Panels**. Remove the **Distributor Hose**. Remove the **Thumbscrew** securing **Cube Guide B**, then remove both **Cube Guides B & A**.
 - 5 Remove the **Overflow Cap, Overflow Pipe, and Drain Plug**. Once water tank has drained, replace and reconnect all the items and panels.
- ⚠ NOTICE! DO NOT** cross thread the drain plug or overflow pipe.
- 6 Refill water tank by moving the control switch to **ICE**, replace the **Front Panel**. After 3 minutes, remove **Front Panel**, move switch to the **OFF** position.
 - 7 Remove the **Top, Left, and Insulation Panels**. Pour **14 fl.oz (414 ml)** of Hoshizaki **Scale Away** into the water tank. Replace the insulation, left and top panels. Turn the cleaning valve left until completely vertical (open).



- Wait 1 minute to avoid excessive foaming 19
- Move control switch to WASH, replace the front panel
- After 45 minutes, remove the front panel 20
- Move control switch to OFF
- Remove the top, left, and insulation panels 21
- Remove distribution hose
- Remove thumbscrew from cube guide B
- Remove cube guide B & A
- Remove the overflow cap, overflow pipe, and drain plug 22
- After the water tank has drained, replace and reconnect all the items

↳ continued on the back...

- 8 Move the control switch to **WASH**, replace **Front Panel**.
- ⚠ **NOTICE! DO NOT** leave the control switch on **WASH** for extended periods when water tank is empty. It will damage water pump seals.



- 9 After 30 minutes, remove **Front Panel**, then move the control switch to **OFF**.

- 10 Remove the **Top, Left, and Insulation Panels**. Remove the **Distributor Hose**. Remove the **Thumbscrew** securing **Cube Guide B**, then remove both **Cube Guides B & A**.

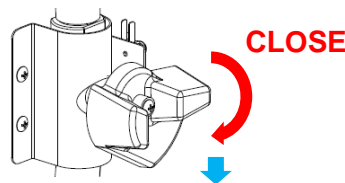
- 11 Remove the **Overflow Cap, Overflow Pipe, and Drain Plug**. Clean all items (See Step 12). Once water tank has drained, replace and reconnect all the items.

- 12 In bad water conditions, a more thorough cleaning may be required. Turn off power supply, clean all items in a solution of **5 oz. of Scale Away per gallon of warm water**. Rinse and replace the cube guides, float switch, water supply tubes, spray tubes and spray guides. Turn on power supply. Otherwise, continue to step 13.



Cleaning Rinse:

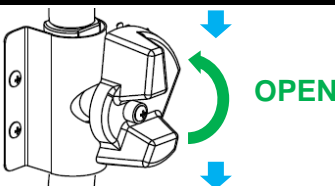
- 13 Turn the cleaning valve to the *right* until completely horizontal (closed). Move the control switch to **ICE**, replace **Front Panel**. After 3 minutes, remove the **Front Panel**, move switch to **OFF**.



- ⚠ **NOTICE! ICE MACHINE WILL NOT WORK**, unless valve is completely closed.

- 14 Turn the cleaning valve to the *left* until completely vertical (open). Move the control switch to **WASH**, replace the **Front Panel**. After 5 minutes, remove the **Front Panel**, switch to **OFF**.

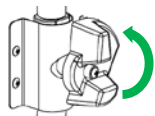
CONTROL PANEL
ICE > 3 minutes > OFF



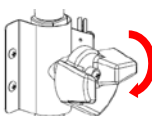
- 15 Remove the **Top, Left, and Insulation Panels**. Remove the **Distributor Hose**. Remove the **thumbscrew** securing **Cube Guide B**, then remove both **Cube Guides B & A**.

CONTROL PANEL
WASH > 5 minutes > OFF

- 16 Remove the **Overflow Cap, Overflow Pipe, and Drain Plug**. Once water tank has drained, replace and reconnect all the items. Continue to **Sanitation – Step 17 on front...**



- OPEN cleaning valve:**
- To allow cleaning solution flow to the inside the evaporator
 - Turn left to open (vertical)



- CLOSE cleaning valve:**
- Must be closed for normal ice making operation
 - Turn right to close (horizontal)

DOWNLOAD COMPLETE INSTRUCTION MANUAL:



hoshizakiamerica.com/support

Type in the model number of your ice machine (including dashes) to download manuals

CLEANING SCHEDULE

- | | |
|-----------------------------|----------------------------|
| ● Scoop | Dish soap, rinse well |
| ● Water Filters | Check psi, change if req'd |
| ● Exterior | Dish soap & damp cloth |
| ● Bin Door/Top Kit | Warm water & clean cloth |
| ● Ice Maker/Bin | Follow these instructions |
| ● Water Supply Inlet | Clean inlet screen |
| ● Condenser | Inspect. Clean with brush |
| ● Water Hoses | Inspect. Replace if req'd |
- DAILY | ● MONTHLY | ● YEARLY

⚠ WARNING!

DO NOT use ammonia type cleaners. Can cause damage to icemaker

WEAR liquid-proof gloves and goggles to protect skin & eyes from cleaning & sanitizing chemicals

↓ sanitizing continued...

RINSE 1: (Steps 23-26)

23

- **CLOSE** cleaning valve
- Move control switch to **ICE**, replace the front panel
- After 3 minutes, remove the front panel
- Move control switch to **OFF**

● **OPEN** cleaning valve

24

- Move control switch to **WASH**, replace the front panel
- After 5 minutes, remove the front panel
- Move control switch to **OFF**

● Remove the top, left, and insulation panels

25

- Remove distribution hose
- Remove thumbscrew from cube guide B
- Remove cube guide B & A

● Remove the overflow cap, overflow pipe, and drain plug

26

- After the water tank has drained, replace and reconnect all the items.

RINSE 2 & 3: (Steps 27-34)

27

- Repeat 2x (Steps 23–26) for complete ice/food safety

● Clean the dispenser / storage bin liner with a neutral cleaner (dish soap)

35

- Rinse thoroughly

● **CLOSE** the cleaning valve

36

- Move control switch to **ICE**

● Replace all panels

37

⚠ NOTICE!

IF ICE MAKER IS ON DISPENSER, remember to turn on the dispenser after cleaning

