

CNM 22 INCH WIDE SERIES

CNM03220, CNM0322**6, CNM0522**0, CNM522**6,
CNM0322**5 & CNM0522**5**

ILLUSTRATED PARTS LIST



Release Date: April 19, 2018

Publication Number: 548000063

Revision Date: April 19, 2018

Revision: A

Visit the Cornelius web site at <http://ice.cornelius.com> for all your Literature needs.

Notice

The products, technical information, and instructions contained in this manual are subject to change without notice. These instructions are not intended to cover all details or variations of the equipment, nor to provide for every possible contingency in the installation, operation or maintenance of this equipment. This manual assumes that the person(s) working on the equipment have been trained and are skilled in working with electrical, plumbing, pneumatic, and mechanical equipment. It is assumed that appropriate safety precautions are taken and that all local safety and construction requirements are being met, in addition to the information contained in this manual.

This Product is warranted only as provided in Cornelius' Commercial Warranty applicable to this Product and is subject to all of the restrictions and limitations contained in the Commercial Warranty.

Cornelius will not be responsible for any repair, replacement or other service required by or loss or damage resulting from any of the following occurrences, including but not limited to, (1) other than normal and proper use and normal service conditions with respect to the Product, (2) improper voltage, (3) inadequate wiring, (4) abuse, (5) accident, (6) alteration, (7) misuse, (8) neglect, (9) unauthorized repair or the failure to utilize suitably qualified and trained persons to perform service and/or repair of the Product, (10) improper cleaning, (11) failure to follow installation, operating, cleaning or maintenance instructions, (12) use of "non-authorized" parts (i.e., parts that are not 100% compatible with the Product) which use voids the entire warranty, (13) Product parts in contact with water or the product dispensed which are adversely impacted by changes in liquid scale or chemical composition.

Correct Disposal of this Product



RECYCLE

This marking indicates that this product should not be disposed with other household wastes throughout the EU. To prevent possible harm to the environment or human health from uncontrolled waste disposal, recycle it responsibly to promote the sustainable reuse of material resources. To return your used device, please use the return and collection systems or contact the retailer where the product was purchased. They can take this product for environmental safe recycling.

Trademarks and Copyrights

This document contains proprietary information and it may not be reproduced in any way without permission from Cornelius. This document contains the original instructions for the unit described.

CORNELIUS INC
101 Regency Drive
Glendale Heights, IL
Tel: + 1 800-238-3600

Printed in U.S.

Contact Information

To inquire about current revisions of any documentation or assistance with any Cornelius product, contact:

www.cornelius.com
800-238-3600

TABLE OF CONTENTS

NOMENCLATURE	1
CABINET PART LIST	2
WATER SYSTEM PART LIST	5
AIR COOLED PART LIST	8
WATER COOLED PART LIST	11
ELECTRICAL PART LIST	13

NOMENCLATURE

This parts list contains the service parts available for the following CNM Series.

CNM0322**0	115/60/1
CNM0322**5	220-240/50/1
CNM0322**6	208-230/60/1
CNM0522**0	115/60/1
CNM0522**5	220-240/50/1
CNM0522**6	208-230/60/1

NOTE: * = Represent Condenser type and Cube Size Refer below for Details

Model Number Example:

CNM0322AH0

CNM = Cornelius Nordic Modular

03 = 300 lb, in 24 hours capacity, **05** = 500 lb, in 24 hours capacity.

22 = 22 inch wide cabinet, **30** = 30 inch wide cabinet

A = Air Cooled Condenser, **W** = Water Cooled Condenser, **R** = Remote Cooled Condenser

H = Half Cube Size, **F** = Full Cube Size **G** = Grande Cube Size

0 = 115 Volt, **5** = 220-240 V / 50 Hz / 1 Phase **6** = 208-230 Volt / 60 Hz / 1 Phase **7** = 3 Phase

Check the model number on the data plate and refer to the correct listing for the specific component.

Check carefully that the correct part is identified and ordered.

CABINET PART LIST

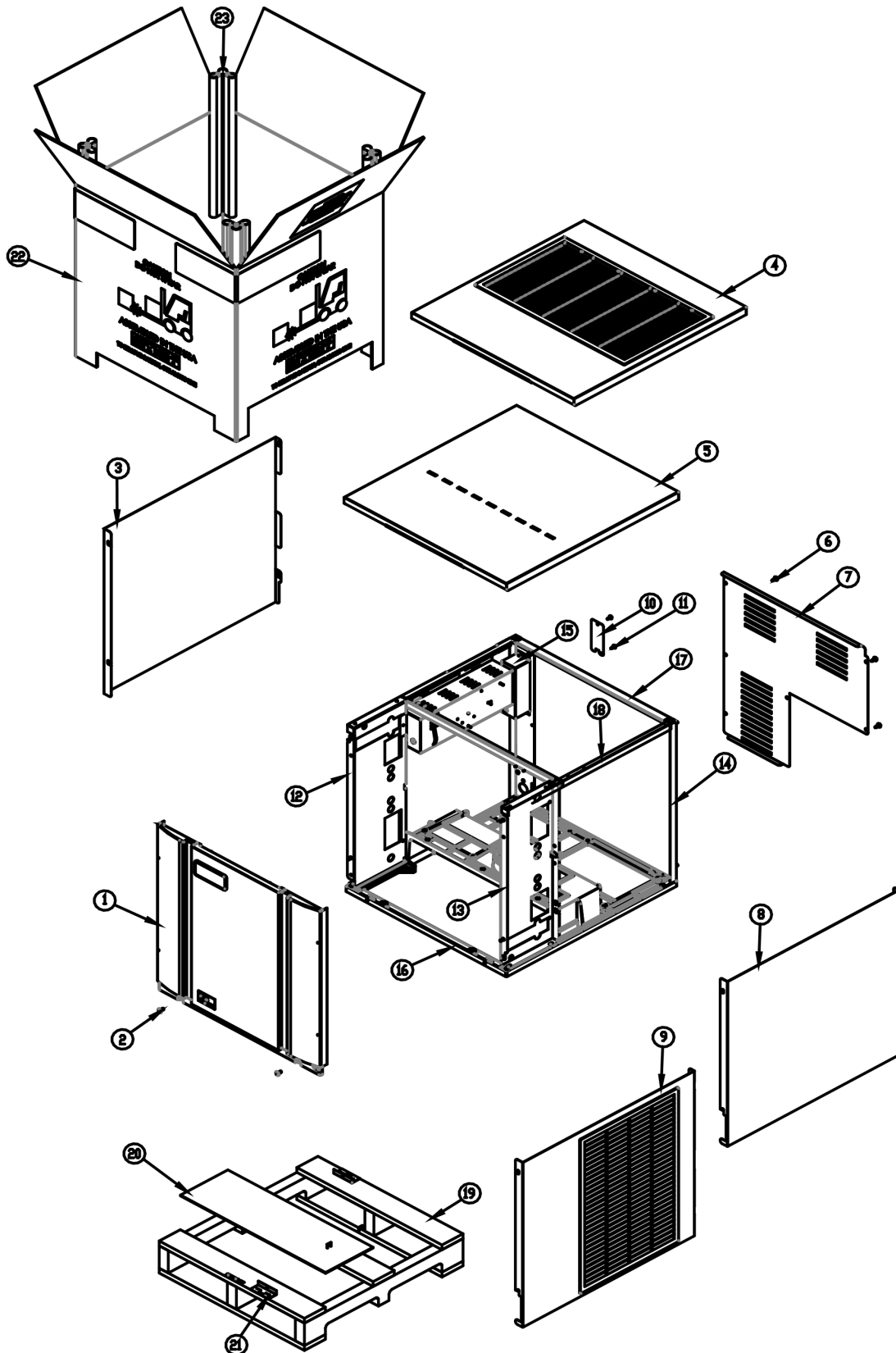


Figure 1.



NOTE: * = Represent Condenser type and Cube Size Refer page 1 for Details.

Item No.	Model Number				Description
	CNM0322**0	CNM0322**6	CNM0522**0	CNM0522**6	
	115/60/1	208-230/60/1	115/60/1	208-230/60/1	Machine Voltage
1.	2031543-01S	2031540-01S	2031540-01S	2031540-01S	Front Panel
2.	9031237-01P	9031237-01P	9031237-01P	9031237-01P	Front Panel Screws
3.	3022007-02	3022007-02	3022007-02	3022007-02	Left Side Panel
4.	2101496-01S	2101496-01S	2101496-01S	2101496-01S	Top Panel-Air Cooled
5.	3022012-01	3022012-01	3022012-01	3022012-01	Top Panel- Water Cooled
6.	9031046-01P	9031046-01P	9031046-01P	9031046-01P	Rear Cover Screws
7.	3013634-01	3013634-01	3013634-01	3013634-01	Rear Cover
8.	3022007-03	3022007-03	3022007-03	3022007-03	Right Side Panel-Water Cooled
9.	2101495-01S	2101495-01S	2101495-01S	2101495-01S	Right Side Panel-Air Cooled
10.	3013674-01	3013674-01	3013674-01	3013674-01	Junction Box Cover
11.	9031046-01	9031046-01	9031046-01	9031046-01	Junction Box Screw
12.	2021784-01	2021784-01	2021784-01	2021784-01	Front Left Brace
13.	2021785-01	2021785-01	2021785-01	2021785-01	Front Right Brace
14.	2021782-01	2021782-01	2021782-01	2021782-01	Right Side Rear Corner
15.	2101494-01	2101494-01	2101494-01	2101494-01	Junction Box
16.	9051725-01	9051725-01	9051725-01	9051725-01	Base
17.	3013636-01	3013636-01	3013636-01	3013636-01	Rear Brace
18.	3013691-01	3013691-01	3013691-01	3013691-01	Top Right Framework
19.	9011369-03	9011369-03	9011369-03	9011369-03	Elevation Skid 22 Inch
20.	9011378-02	9011378-02	9011378-02	9011378-02	Carton Liner 22 Inch
21.	9051765-01	9051765-01	9051765-01	9051765-01	Shipping Bracket 2 Req.(Field Installed)
22.	9011374-01	9011374-01	9011374-01	9011374-01	Carton, Elevation 22 Inch
23.	9011320-15	9011320-15	9011320-15	9011320-15	Corner Post (Each), Elevation, (4 Required)
24.	9031026-04P	9031026-04P	9031026-04P	9031026-04P	Pop Rivets Not Shown (Package of 10)

NOTE: * = Represent Condenser type and Cube Size Refer page 1 for Details

220-240/50/1 Machine Voltage			
Item No.	Model Number		Description
	CNM0322**5	CNM0522**5	
1.	2031543-01S	2031540-01S	Front Panel
2.	9031237-01P	9031237-01P	Front Panel Screws
3.	3022007-02	3022007-02	Left Side Panel
4.	2101496-01S	2101496-01S	Top Panel-Air Cooled
5.	NA	3022012-01	Top Panel- Water Cooled
6.	9031046-01P	9031046-01P	Rear Cover Screws
7.	3013634-01	3013634-01	Rear Cover
8.	3022007-03	3022007-03	Right Side Panel-Water Cooled
9.	2101495-01S	2101495-01S	Right Side Panel-Air Cooled
10.	3013674-01	3013674-01	Junction Box Cover
11.	9031046-01	9031046-01	Junction Box Screw
12.	2021784-01	2021784-01	Front Left Brace
13.	2021785-01	2021785-01	Front Right Brace
14.	2021782-01	2021782-01	Right Side Rear Corner
15.	2101494-02	2101494-02	Junction Box
16.	9051725-01	9051725-01	Base
17.	3013636-01	3013636-01	Rear Brace
18.	3013691-01	3013691-01	Top Right Framework
19.	9011369-03	9011369-03	Elevation Skid 22 Inch
20.	9011378-02	9011378-02	Carton Liner 22 Inch
21.	9051765-01	9051765-01	Shipping Bracket 2 Req. (Field Installed)
22.	9011374-01	9011374-01	Carton, Elevation 22 Inch
23.	9011320-15	9011320-15	Corner Post (Each), Elevation, (4 Required)
24.	9031026-04P	9031026-04P	Pop Rivets Not Shown (Package of 10)

WATER SYSTEM PART LIST

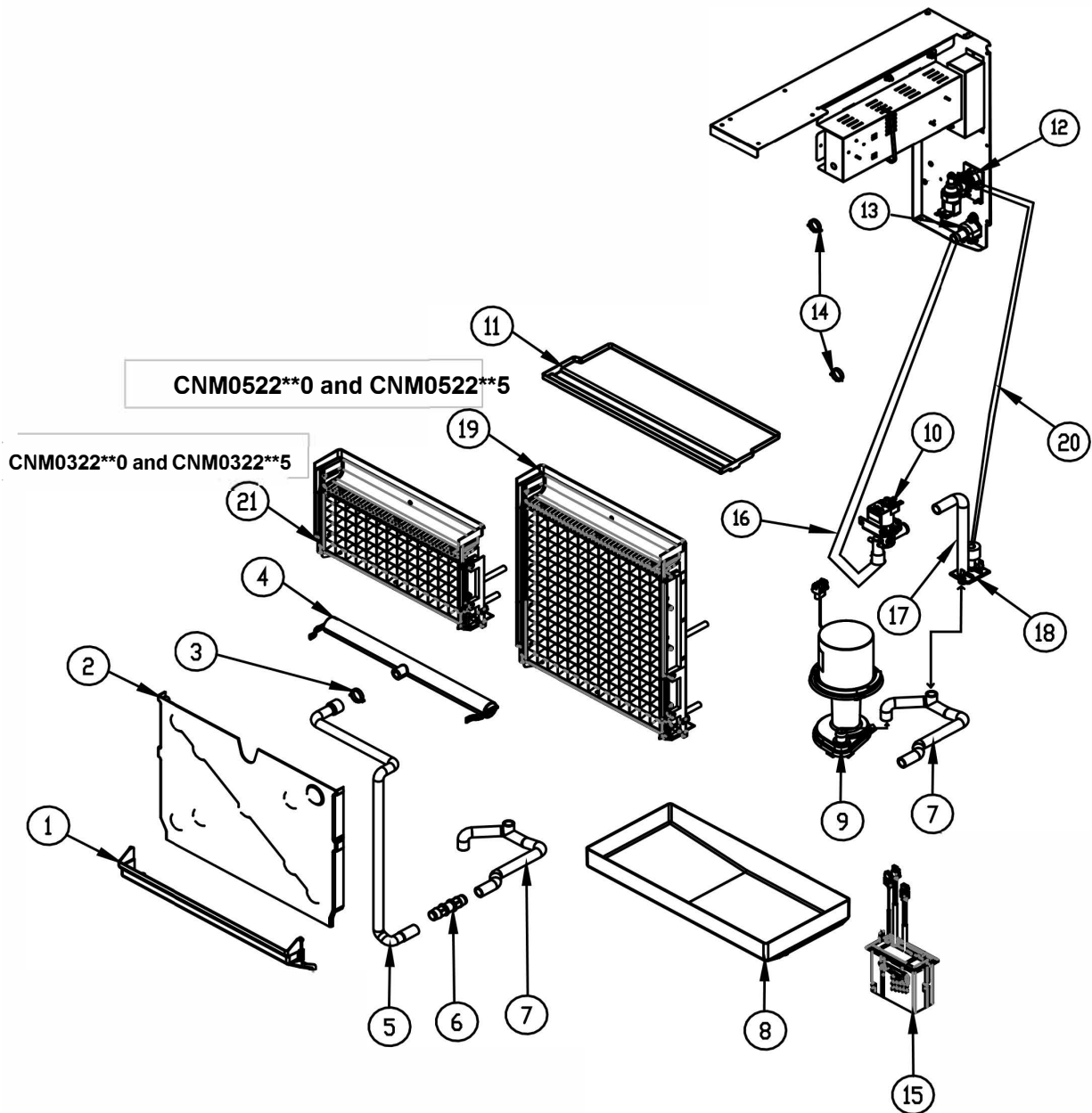


Figure 2.

The Model Number of the machine has a designator for the Cube Size:

Example:	CNM0322AF0	F = Full Cube	Cube Size = 7/8 x 7/8 x 7/8
	CIM0322AH0	H = Half Cube	Cube Size = 3/8 x 7/8 x 7/8



NOTE: * = Represent Condenser type and Cube Size Refer page 1 for Details

Sl. No	Model				Description
	CNM0322**0	CNM0322**6	CNM0522**0	CNM0522**6	
	115/60/1	208-230/60/1	115/60/1	208-230/60/1	Machine Voltage
1.	9051736-01	9051736-01	9051736-01	9051736-01	Lower Curtain Assembly
2.	9051726-01	9051726-01	9051726-02	9051726-02	Evaporator Cover
3.	9021010-05	9021010-05	9021010-05	9021010-05	Hose Clamp, Plastic
4.	9051766-01	9051766-01	9051766-01	9051766-01	Water Distribution Tube Assembly
5.	9051749-01	9051749-01	9051749-02	9051749-02	Water Tube, Upper
6.	9091177-01	9091177-01	9091177-01	9091177-01	Coupler, Straight, 5/8 I.D. Tubing
7.	9051748-01	9051748-01	9051748-01	9051748-01	Water Tube, Sump
8.	9051737-01	9051737-01	9051737-01	9051737-01	Sump/Water Trough
9.	2062336-01S	2062336-02S	2062336-01S	2062336-02S	Water Pump
10.	9041105-04	9041105-05	9041105-04	9041105-05	Purge Valve
11.	9051738-01	9051738-01	9051738-01	9051738-01	Top Cover
12.	9041108-01	9041108-02	9041108-01	9041108-02	Water Inlet Valve
13.	9091140-01	9091140-01	9091140-01	9091140-01	Drain Fitting
14.	9021010-04	9021010-04	9021010-04	9021010-04	Hose Clamp, Plastic
15.	1051224-01	1051224-01	1051224-01	1051224-01	Float Switch Assembly (Includes Instructions)
16.	3051269-30S	3051269-30S	3051269-30S	3051269-30S	Purge Valve Tubing to Drain
17.	9051541-01	9051541-01	9051541-01	9051541-01	Purge Valve Tube to Inlet Outlet Bracket
18.	9051739-01	9051739-01	9051739-01	9051739-01	Inlet Outlet Bracket
19.			1051223-03	1051223-03	Evaporator-FULL Cube = 7/8 x 7/8 x 7/8
			1051223-04	1051223-04	Evaporator-HALF Cube = 3/8 x 7/8 x 7/8
20.	9051270-36	9051270-36	9051270-36	9051270-36	Water Inlet Valve to Inlet Outlet Bracket Tube
21.	1051223-01	1051223-01			Evaporator-FULL Cube = 7/8 x 7/8 x 7/8
	1051223-02	1051223-02			Evaporator-HALF Cube = 3/8 x 7/8 x 7/8



NOTE: * = Represent Condenser type and Cube Size Refer page 1 for Details.

220-240/50/1 Machine Voltage			
Item No.	Model Number		Description
	CNM0322**5	CNM0522**5	
1.	9051736-01	9051736-01	Lower Curtain Assembly
2.	9051726-01	9051726-02	Evaporator Cover
3.	9021010-05	9021010-05	Hose Clamp, Plastic
4.	9051766-01	9051766-01	Water Distribution Tube Assembly
5.	9051749-01	9051749-02	Water Tube, Upper
6.	9091177-01	9091177-01	Coupler, Straight, 5/8 I.D. Tubing
7.	9051748-01	9051748-01	Water Tube, Sump
8.	9051737-01	9051737-01	Sump/Water Trough
9.	2062336-02S	2062336-02S	Water Pump
10.	9041105-05	9041105-05	Purge Valve
11.	9051738-01	9051738-01	Top Cover
12.	9041108-02	9041108-02	Water Inlet Valve
13.	9091140-01	9091140-01	Drain Fitting
14.	9021010-04	9021010-04	Hose Clamp, Plastic
15.	1051224-01	1051224-01	Float Switch Assembly (Includes Instructions)
16.	3051269-30S	3051269-30S	Purge Valve Tubing to Drain
17.	9051541-01	9051541-01	Purge Valve Tube to Inlet Outlet Bracket
18.	9051739-01	9051739-01	Inlet Outlet Bracket
19.		1051223-03	Evaporator-FULL Cube = 7/8 x 7/8 x 7/8
		1051223-04	Evaporator-HALF Cube = 3/8 x 7/8 x 7/8
20.	9051270-36	9051270-36	Water Inlet Valve to Inlet Outlet Bracket Tube
21.	1051223-01		Evaporator-FULL Cube = 7/8 x 7/8 x 7/8
	1051223-02		Evaporator-HALF Cube = 3/8 x 7/8 x 7/8

AIR COOLED PART LIST

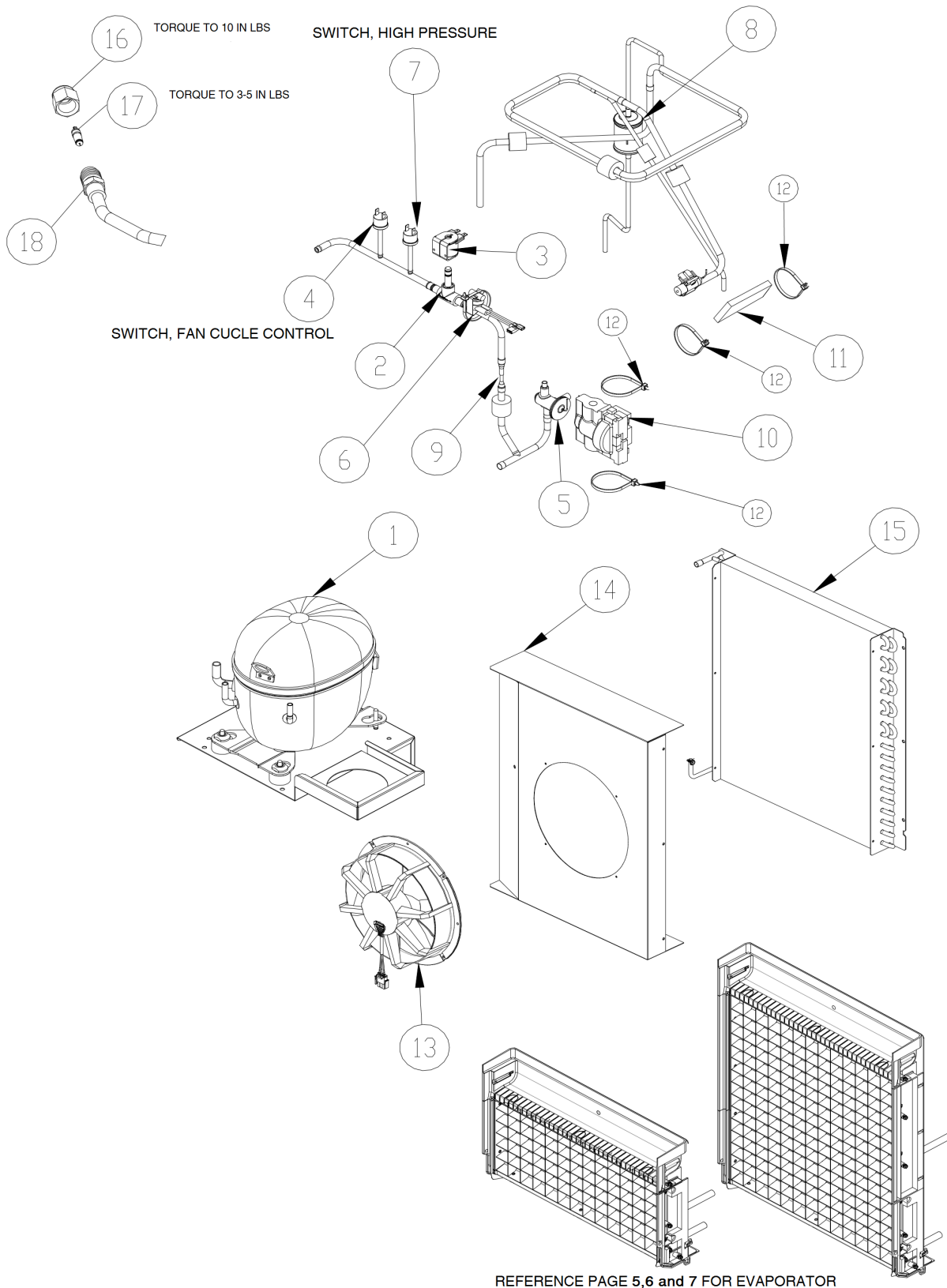


Figure 3.



NOTE: * = Cube Size Refer page 1 for more details.

Item No.	Model Number				Description
	CNM0322A*0	CNM0322A*6	CNM0522A*0	CNM0522A*6	
	115/60/1	208-230/60/1	115/60/1	208-230/60/1	Machine Voltage
1.	9181163-101	9181164-101	9181137-11B	9181170-11	Compressor Kit
2.	9151192-03	9151192-03	9151192-01	9151192-01	Hot Gas Valve Body
3.	9151193-01	9151193-02	9151193-01	9151193-02	Hot Gas Valve Coil
4.	9041106-01	9041106-01	9041106-01	9041106-01	Switch, Fan Cycle
5.	9151154-101	9151149-101	9151149-101	9151149-101	TXV
6.	9041098-02	9041098-02	9041098-02	9041098-02	High Temp Switch
7.	9041111-01	9041111-01	9041111-01	9041111-01	Switch, High Pressure
8.	9151163-01	9151163-01	9151163-01	9151163-01	Drier (Included in Compressor Kit)
9.	9091179-01	9091179-01	9091179-01	Not Used	Restrictor
10.	9131544-01	9131544-01	9131544-01	9131544-01	Insulation, TXV
11.	9131143-07	9131143-07	9131143-07	9131143-07	Insulation, Bulb
12.	9021021-01	9021021-01	9021021-01	9021021-01	Cable Tie-For TXV and Bulb Insulation
13.	9161135-01	9161135-02	9161135-01	9161135-02	Fan Motor Assembly
14.	3013639-01	3013639-01	3013639-01	3013639-01	Fan Shroud
15.	9141152-01	9141152-01	9141152-01	9141152-01	Condenser
16.	9091086-03	9091086-03	9091086-03	9091086-03	Service Valve Cap
17.	9091086-02	9091086-02	9091086-02	9091086-02	Service Valve Core
18.	9091086-01	9091086-01	9091086-01	9091086-01	Service Valve Stem
	CNM0330A*0	CNM0322A*6	CNM0522A*0	CNM0522A*6	Starting Components (Included in Comp Kit)
	9181163-101	9181164-101	9181137-11B	9181170-11	Compressor Kit
	9181003-50	9181003-26	9181003-50	9181003-54	Start Capacitor
	9181009-25	9181009-08	9181009-25	9181009-09	Run Capacitor
	9181010-33	9181010-27	9181010-14	9181010-27	Compressor Relay
	9181005-49	9181005-50	9181005-45	9181005-48	Overload

NOTE: * = Cube Size Refer Page 1 for more details.

220-240/50/1 Machine Voltage				
	Model Number			Description
	CNM0322A*5		CNM0522A*5	
1.	9181165-101		9181166-11	Compressor Kit
2.	9151192-03		9151192-01	Hot Gas Valve Body
3.	9151193-02		9151193-02	Hot Gas Valve Coil
4.	9041106-01		9041106-01	Switch, Fan Cycle
5.	9151154-101		9151149-101	TXV
6.	9041098-02		9041098-02	High Temp Switch
7.	9041111-01		9041111-01	Switch, High Pressure
8.	9151163-01		9151163-01	Drier (Included in Compressor Kit)
9.	9091179-01		9091179-01	Restrictor
10.	9131544-01		9131544-01	Insulation, TXV
11.	9131143-07		9131143-07	Insulation, Bulb
12.	9021021-01		9021021-01	Cable Tie-For TXV and Bulb Insulation
13.	9161135-02		9161135-02	Fan Motor Assembly
14.	3013639-01		3013639-01	Fan Shroud
15.	9141152-01		9141152-01	Condenser
16.	9091086-03		9091086-03	Service Valve Cap
17.	9091086-02		9091086-02	Service Valve Core
18.	9091086-01		9091086-01	Service Valve Stem

CNM0322A*5		CNM0522A*5	Starting Components (Included in Comp Kit)
9181165-101		9181166-11	Compressor Kit
9181003-54		9181003-32	Start Capacitor
9181009-26		9181009-28	Run Capacitor
9181010-27		9181010-34	Compressor Relay
9181005-50		9181005-51	Overload

WATER COOLED PART LIST

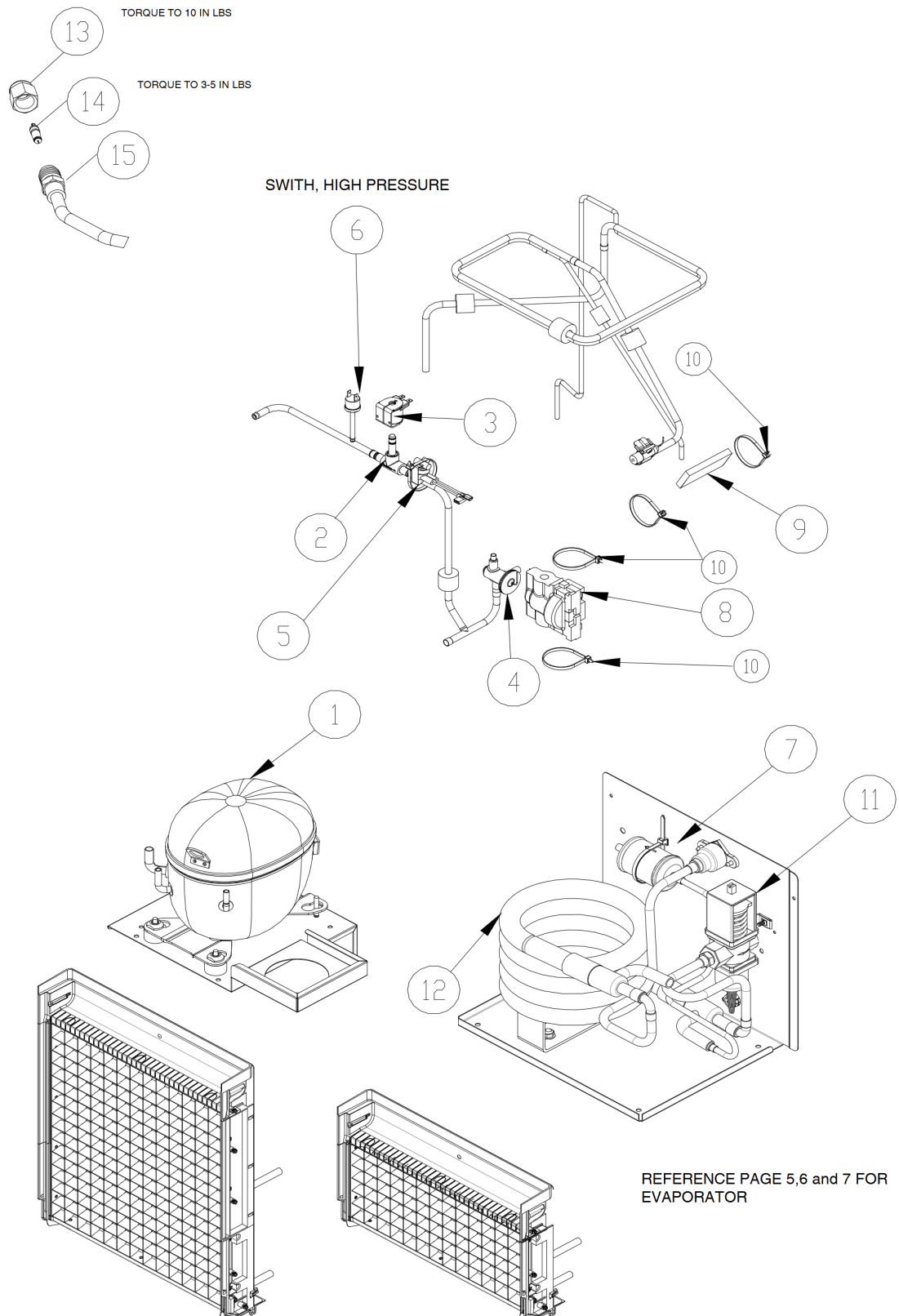


Figure 4.



NOTE: * = Cube Size Refer Page 1 for more details.

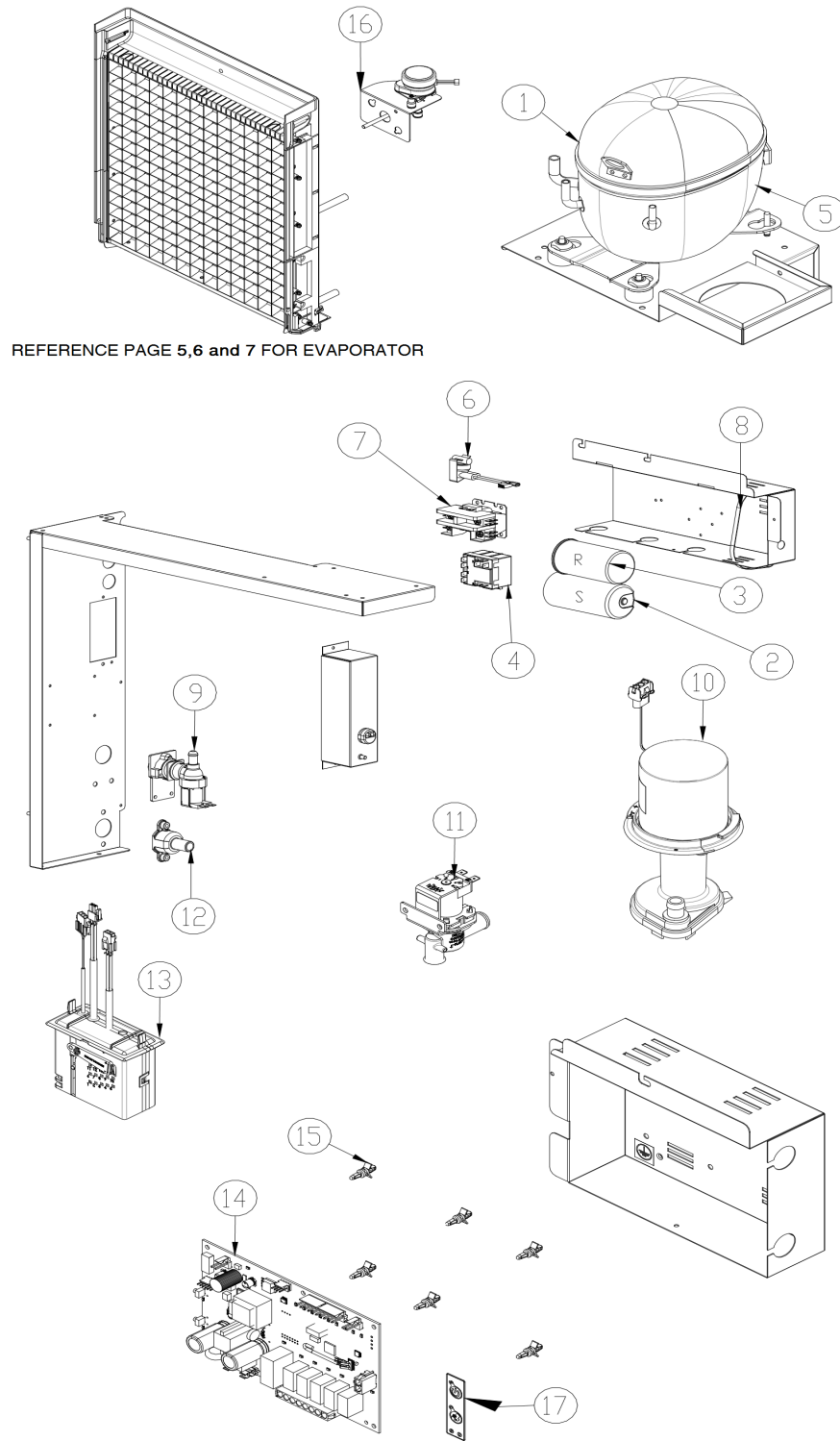
Item No.	Model				Description
	CNM0322W*0 115/60/1	CNM0322W*6 208-230/60/1	CNM0522W*0 115/60/1	CNM0522W*6 208-230/60/1	
					Machine Voltage
1.	9181163-101	9181164-101	9181137-11B	9181170-11	Compressor Kit
2.	9151192-03	9151192-03	9151192-03	9151192-03	Hot Gas Valve Body
3.	9151193-01	9151193-02	9151193-01	9151193-02	Hot Gas Valve Coil
4.	9151154-101	9151149-101	9151149-101	9151149-101	TXV
5.	9041098-02	9041098-02	9041098-02	9041098-02	High Temp Switch
6.	9041111-01	9041111-01	9041111-01	9041111-01	Switch, High Pressure
7.	9151163-01	9151163-01	9151163-01	9151163-01	Drier (Included in Compressor Kit)
8.	9131544-01	9131544-01	9131544-01	9131544-01	Insulation, TXV
9.	9131143-07	9131143-07	9131143-07	9131143-07	Insulation, Bulb
10.	9021021-01	9021021-01	9021021-01	9021021-01	Cable Tie-For TXV and Bulb Insulation
11.	9051104-01	9051104-01	9051104-01	9051104-01	Water Regulator
12.	9141156-01	9141156-01	9141156-01	9141156-01	Condenser
13.	9091086-03	9091086-03	9091086-03	9091086-03	Service Valve Cap
14.	9091086-02	9091086-02	9091086-02	9091086-02	Service Valve Core
15.	9091086-01	9091086-01	9091086-01	9091086-01	Service Valve Stem

CNM0322A*0	CNM0322A*6	CNM0522A*0	CNM0522A*6	Starting Components (Included in Comp Kit)
9181163-101	9181164-101	9181137-11B	9181170-11	Compressor Kit
9181003-50	9181003-26	9181003-50	9181003-54	Start Capacitor
9181009-25	9181009-08	9181009-25	9181009-09	Run Capacitor
9181010-33	9181010-27	9181010-14	9181010-27	Compressor Relay
9181005-49	9181005-50	9181005-45	9181005-48	Overload

220-240/50/1 Machine Voltage		
Item No.	Model	Description
	CNM0522W*5	
1.	9181166-11	Compressor Kit
2.	9151192-03	Hot Gas Valve Body
3.	9151193-02	Hot Gas Valve Coil
4.	9151149-101	TXV
5.	9041098-02	High Temp Switch
6.	9041111-01	Switch, High Pressure
7.	9151163-01	Drier (Included in Compressor Kit)
8.	9131544-01	Insulation, TXV
9.	9131143-07	Insulation, Bulb
10.	9021021-01	Cable Tie-For TXV and Bulb Insulation
11.	9051104-01	Water Regulator
12.	9141156-01	Condenser
13.	9091086-03	Service Valve Cap
14.	9091086-02	Service Valve Core
15.	9091086-01	Service Valve Stem

CNM0522A*5	Starting Components (Included in Comp Kit)
9181166-11	Compressor Kit
9181003-32	Start Capacitor
9181009-28	Run Capacitor
9181010-34	Compressor Relay
9181005-51	Overload

ELECTRICAL PART LIST



REFERENCE PAGE 5,6 and 7 FOR EVAPORATOR

Figure 5.



NOTE: * = Cube Size Refer Page 1 for more details.

Item	Model Number				Description
	CNM0322A*0	CNM0322A*6	CNM0522A*0	CNM0522A*6	
	115/60/1	208-230/60/1	115/60/1	208-230/60/1	Machine Voltage
1.	9181163-101	9181164-101	9181137-11B	9181170-11	Compressor
2.	9181003-50	9181003-26	9181003-50	9181003-54	Start Capacitor
3.	9181009-25	9181009-08	9181009-25	9181009-09	Run Capacitor
4.	9181010-33	9181010-27	9181010-14	9181010-27	Potential Relay
5.	9181005-49	9181005-50	9181005-45	9181005-48	Overload
6.	9041098-02	9041098-02	9041098-02	9041098-02	Switch, High Temp
7.	9101002-07	9101002-06	9101002-07	9101002-06	Contactor
8.	9021096-01	9021096-01	9021096-01	9021096-01	Cable Tie, Metal
9.	9041108-01	9041108-02	9041108-01	9041108-02	Valve, Water Inlet
10.	2062336-01	2062336-02	2062336-01	2062336-02	Water Pump
11.	9041105-04	9041105-05	9041105-04	9041105-05	Purge Valve
12.	9091140-01	9091140-01	9091140-01	9091140-01	Purge Drain
13.	1051224-01	1051224-01	1051224-01	1051224-01	Float Switch Assembly (Includes Instructions)
14.	9101368-02	9101368-02	9101368-02	9101368-02	Board Dual Voltage
15.	9051698-01P	9051698-01P	9051698-01P	9051698-01P	Plastic Standoff, Control Board (Pkg of 10)
16.	9161134-01	9161134-02	9161134-01	9161134-02	Harvest Assist
17.	9101394-01	9101394-01	9101394-01	9101394-01	Membrane Switch (Includes Cable)
18.	9101379-01	9101379-01	9101379-01	9101379-01	Switch, Magnetic Reed (Bin Control On Evap)

220-240/50/1 Machine Voltage			
Item No.	Model Number		Description
	CNM0322A*5	CNM0522A / W*5	
1.	9181165-101	9181166-11	Compressor Kit
2.	9181003-54	9181003-32	Start Capacitor
3.	9181009-26	9181009-28	Run Capacitor
4.	9181010-27	9181010-34	Compressor Relay
5.	9181005-50	9181005-51	Overload
6.	9041098-02	9041098-02	Switch, High Temp
7.	9101002-06	9101002-06	Contactor
8.	9021096-01	9021096-01	Cable Tie, Metal
9.	9041108-02	9041108-02	Valve, Water Inlet
10.	2062336-02	2062336-02	Water Pump
11.	9041105-05	9041105-05	Purge Valve
12.	9091140-01	9091140-01	Purge Drain
13.	1051224-01	1051224-01	Float Switch Assembly (Includes Instructions)
14.	9101368-02	9101368-02	BoardDual Voltage
15.	9051698-01P	9051698-01P	Plastic Standoff, Control Board (Pkg of 10)
16.	9161134-02	9161134-02	Harvest Assist
17.	9101394-01	9101394-01	Membrane Switch (Includes Cable)
18.	9101379-01	9101379-01	Switch, Magnetic Reed (Bin Control On Evap)

Cornelius Inc.
www.cornelius.com