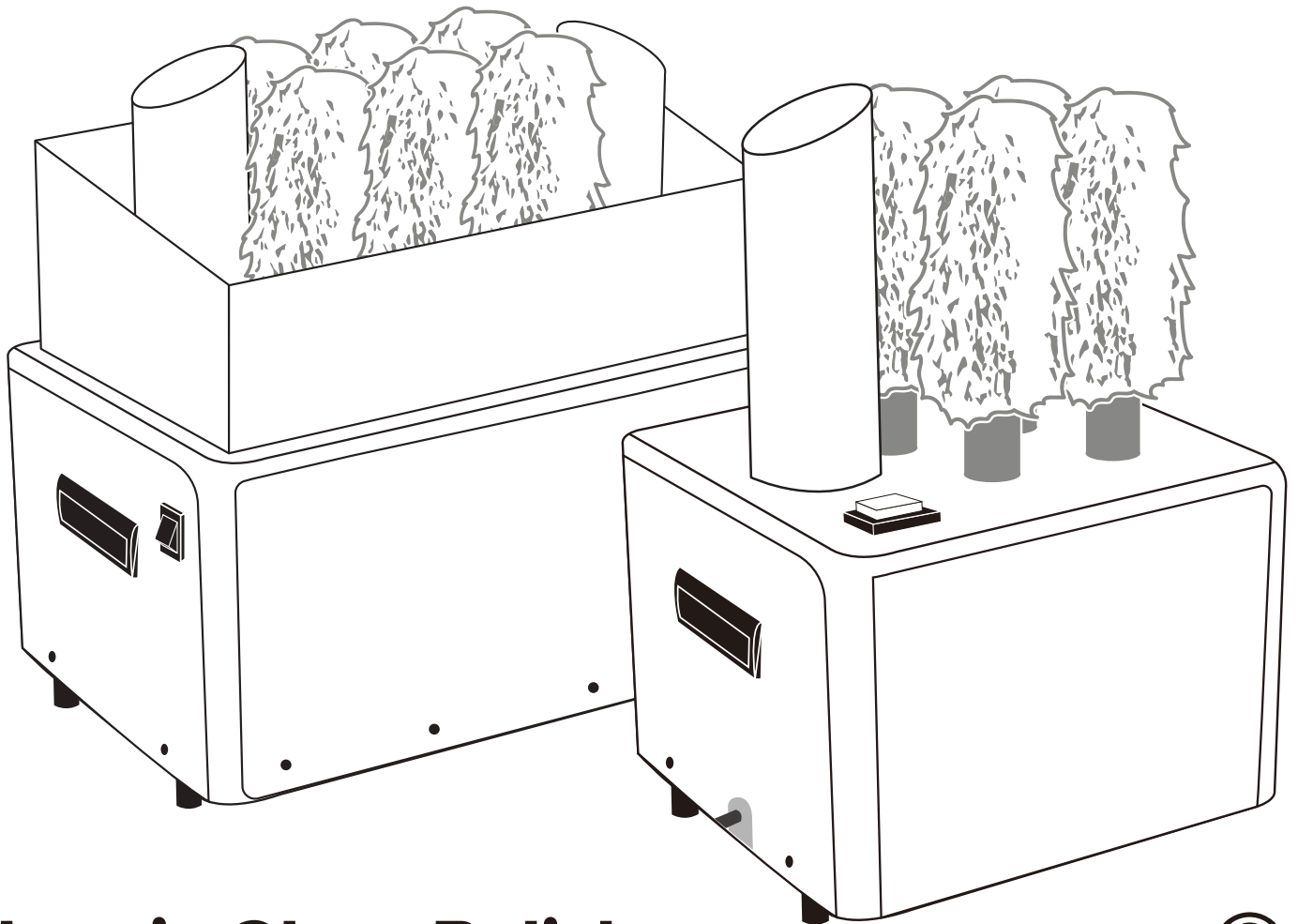


# User Manual



## GLASS GENIE



## Electric Glass Polisher



**Models:** 274GP1250, 274GP1600

07/2019

***Please read and keep these instructions. Indoor use only.***

## Specifications

274GP1250 

**Voltage:** 120V AC 50/60Hz 1350W 12.5 Amps

**Capacity:** Up to 330 glasses per hour

**Dimensions:** 32.5 x 30 x 50cm / 12.8"W x 11.8"L x 19.7"H

**Weight:** 15.5 Kgs / 34 lbs.

**Air Flow:** 164 CFM

**Hot Air Temperature:** 55-60°C / 130-140°F

274GP1600

**Voltage:** 120V AC 50/60Hz 1600W 13.3 Amps

**Capacity:** Up to 660 glasses per hour

**Dimensions:** 57x30x50cm 22.4"W x 11.8"L x 19.9"H

**Weight:** 18.3 Kgs / 40.3 lbs.

**Air Flow:** 328 CFM

**Hot Air Temperature:** 55-60°C / 130-140°F

## Important Safety Information

**CAUTION: THESE MARKS ARE USED AS A REFERENCE THROUGHOUT THIS MANUAL.**



### **LIGHTNING FLASH IN TRIANGLE**

This is used to alert the user of the presence of dangerous voltage that may create a risk of electric shock. Do not open cover.



### **EXCLAMATION POINT IN TRIANGLE**

This is used to alert the user to:

- “CAUTION”: regarding important information regarding the care and use of this equipment.
- “WARNING”: regarding possibility of personal injury.

## Important Safeguards

### PLEASE READ THESE FIRST!

Follow these basic safety precautions when using this electrical appliance to reduce the risk of fire, electric shock, and/or personal injury.



**WARNING:**

Plug unit only into a GROUNDED outlet that matches the voltage/cycle as listed on the motor. Outlet must be equipped with a UL/CSA approved ground fault circuit interrupter (G.F.C.I.).



**WARNING:**

Keep electrical cord clear of brushes and water.



**WARNING:**

DO NOT use machine if the power cord is cracked or damaged.



**WARNING:**

Disconnect from the power source before servicing.



**WARNING:**

Disconnect from the power source before servicing.



**WARNING:**

Ensure brushes are securely in place before turning machine on.



**WARNING:**

Do not touch the rotating brushes with hands.



**WARNING:**

Do not insert objects other than glass in between the rotating brushes.



**WARNING:**

Do not operate the machine without the brushes and air blower in place.



**WARNING:**

Do not place any objects into the glass polisher's ventilation openings.



**WARNING:**

Loose clothing, long hair and jewelry can be caught in moving parts, posing an entrapment hazard.



**CAUTION:**

Use machine only for the purpose it was intended.



**CAUTION:**

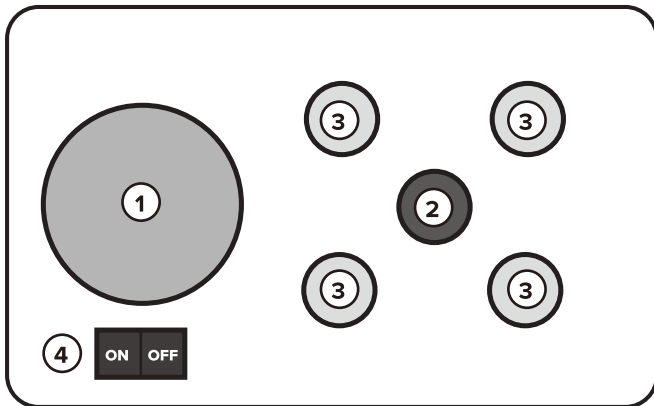
Use only genuine replacement parts.

## Assembly Instructions

1. Place unit on flat stable surface.
2. Attach blow tube onto the air blower base with the outlet on the blow tube facing the brush heads
3. Use screw provided to secure the blow tube in place.
4. Insert the short brush onto the middle drive shaft base, rotating it counter-clockwise to lock the notch of the brush to the drive shaft pin.
5. Repeat with remaining brushes onto the drive shafts.

**NOTE: SEE TOP VIEWS OF THE POLISHERS FOR ACCURATE LOCATION OF COMPONENTS**

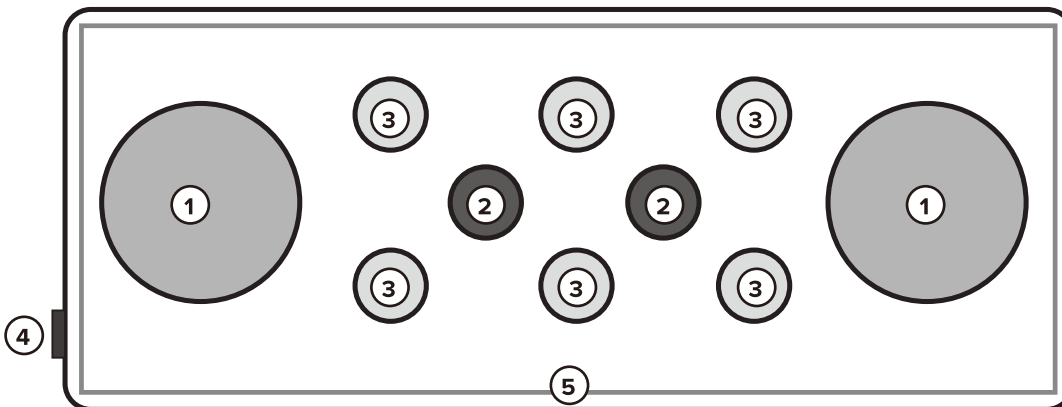
### Top View - 274GP1250 Glass Genie 5-Brush



### Components List

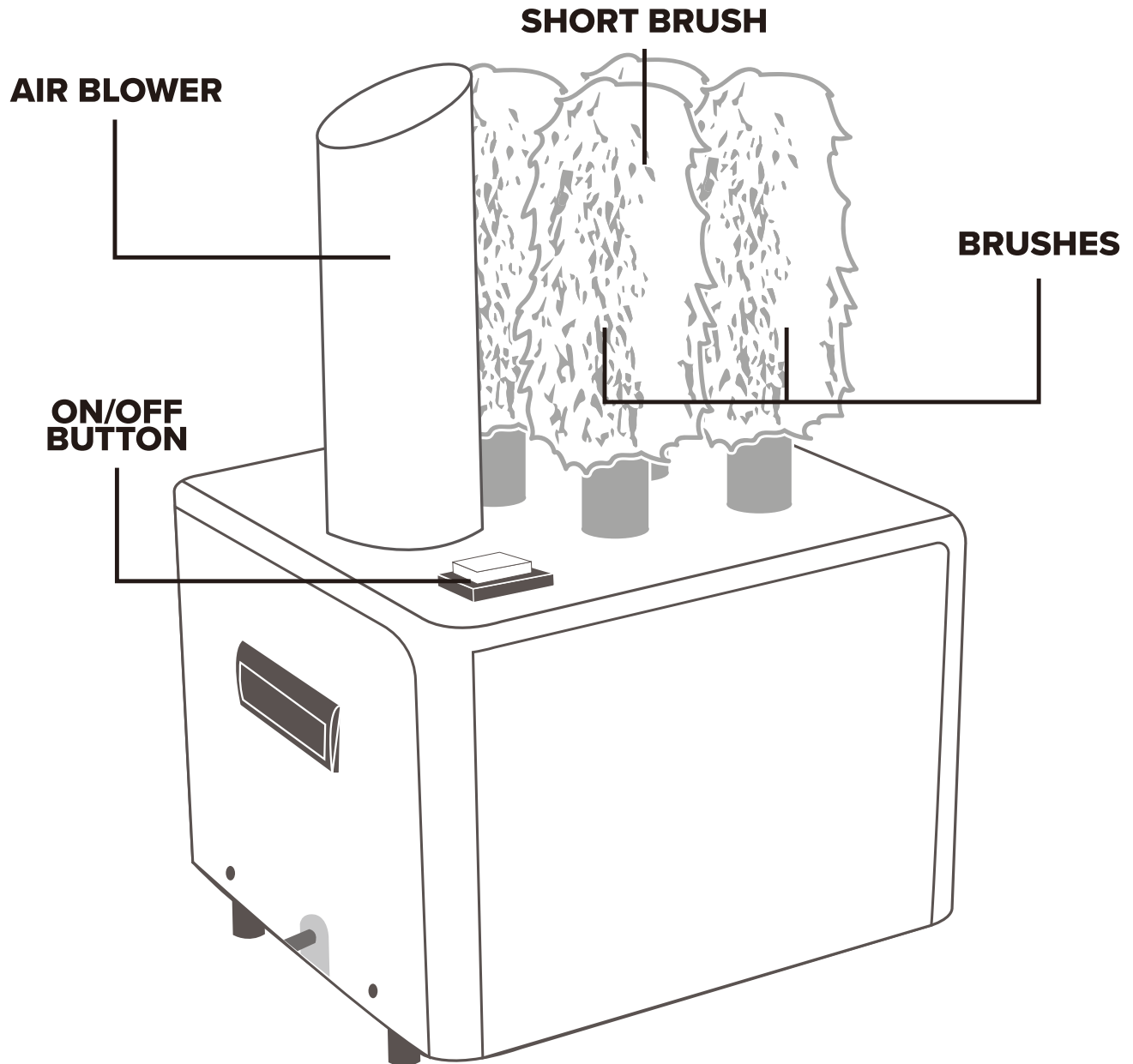
No.	Part Name
1	Warm Air Blow Tube
2	Short Brush Drive Shafts
3	Long Brush Drive Shafts
4	On/Off Switch
5	Removable Guard

### Top View - 274GP1600 Glass Genie 8-Brush



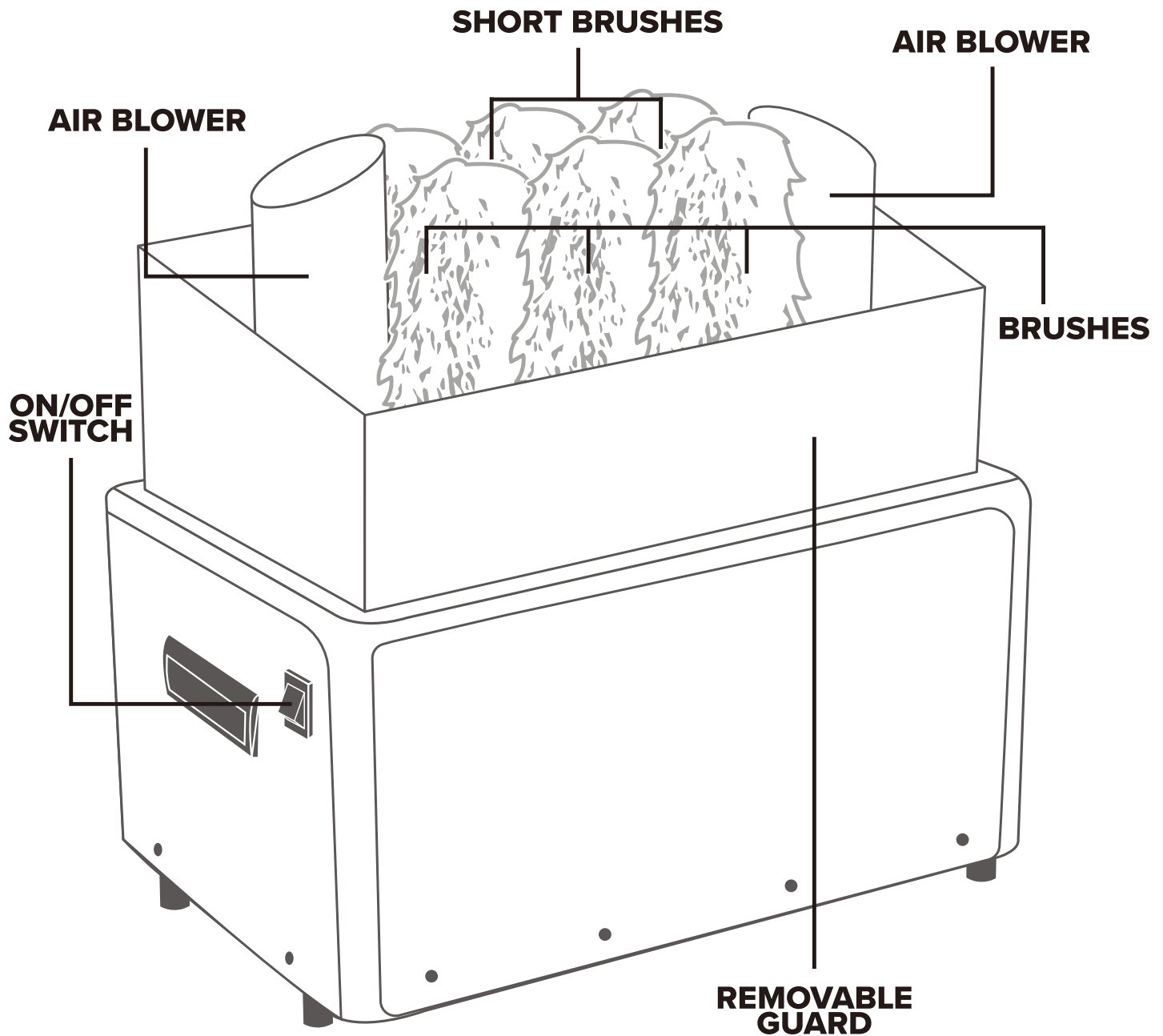
## 274GP1250 Diagram

Glass Genie 5-Brush



## 274GP1600 Diagram

Glass Genie 8-Brush



## Operating Instructions

**NOTE: GLASSES MUST BE WASHED, RINSED, AND STILL DAMP WHEN INSERTED INTO THE GLASS POLISHER TO GET THE BEST RESULTS. DRY GLASSES ARE DIFFICULT TO POLISH.**

1. Plug power cord into grounded outlet.
2. Press ON/OFF button to turn glass polisher ON.
3. Grasp glass at the base and insert onto center brush, holding glass base stationary or with slight up and down movement while center brush dries and polishes the inside of the glass and four outer brushes dry and polish the outside of the glass.
4. Remove glass from glass polisher.
5. Press ON/OFF button to turn glass polisher OFF when not in use.

**NOTE: MOST GLASS TAKE 8-12 SECONDS TO POLISH, DEPENDING ON THE COMPLEXITY AND SIZE OF THE GLASSWARE.**

## Care and Maintenance

### CLEANING THE POLISHER EXTERIOR

1. Ensure glass polisher is OFF and unplug power cord from the outlet.
2. Clean external surface of glass polisher daily using a dampened sponge. Do not immerse glass washer in water or spray with water.
3. Dry the surface with a soft cloth.

### CLEANING THE BRUSHES

1. Ensure glass polisher is OFF and unplug power cord from the outlet.
2. Remove brushes by rotating each brush counter clockwise and pulling upward.
3. Wash brushes with mild laundry detergent and rinse well.
4. Use hands to squeeze as much water out of brushes as possible.
5. Insert short brush onto center post of the base.
6. Insert remaining brushes onto outer posts.
7. Plug power cord into a grounded outlet.
8. Press ON/OFF button to turn glass polisher ON. The air blower will dry the brushes in a few minutes.
9. Press ON/OFF button to turn glass polisher OFF when finished or not in use.

### REPLACING THE BRUSHES

1. Ensure glass polisher is OFF and unplug power cord from the outlet.
2. Remove brushes by rotating each brush counter clockwise and pulling upward.
3. Insert short brush onto center post of the base.
4. Insert remaining brushes onto outer posts.

## REPLACING THE FUSE

1. Using a slotted screwdriver, push on the fuse lightly and rotate it 90 degrees to the left. This will allow the fuse to come out. Reference Pic 1.



Pic 1

2. Disassemble the fuse from the fuse cover (the black part is the fuse cover) Reference Pic 2 & 3. Once removed, insert the new fuse into the fuse cover. Then insert the new fuse into the machine with a slotted screwdriver, rotating it 90 degrees to the right to lock the fuse in place.



Pic 2



Pic 3

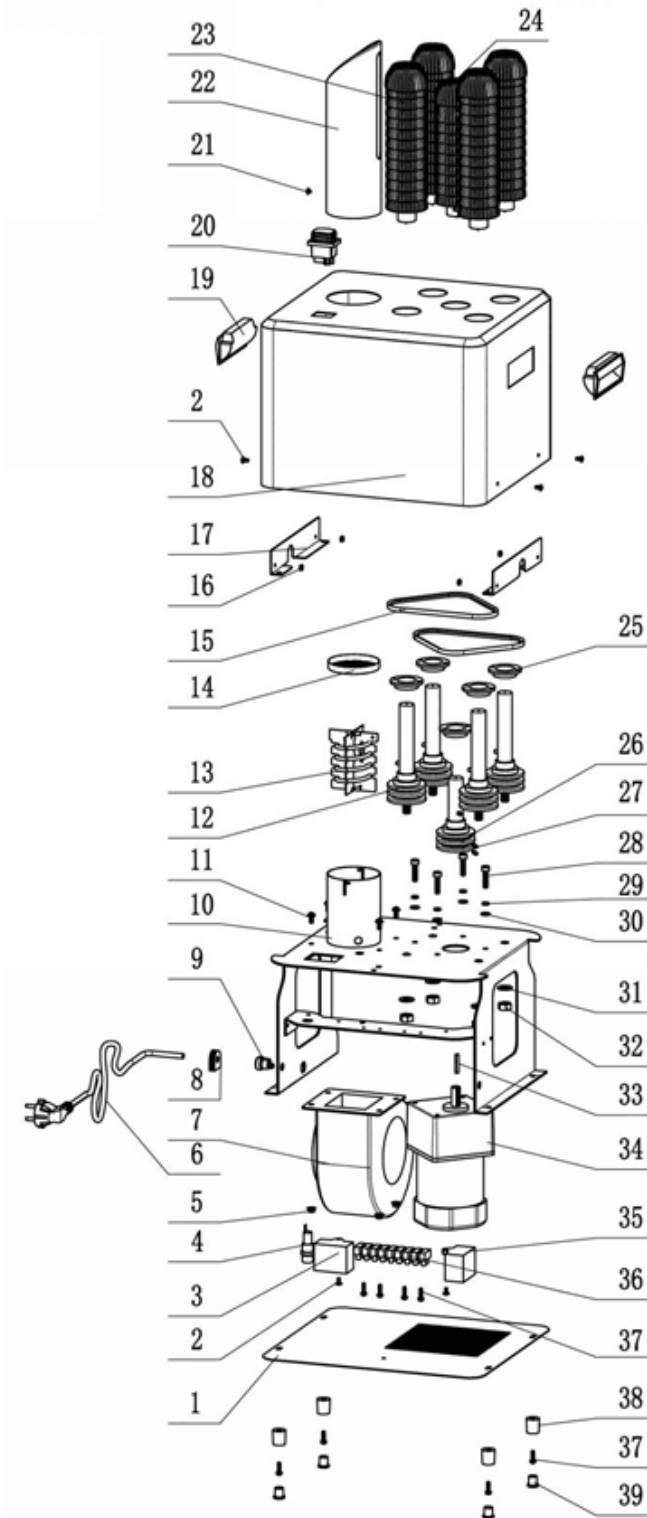
## Troubleshooting

Problem	Possible Solution
Glass Polisher does not work after being switched on	Confirm polisher is plugged in to a working outlet
	Check fuse and reset if needed
Brush spin cycle is slow	Check to see if something is jamming the brushes
	Confirm the unit is plugged into a dedicated outlet
The brush is lose on the drive shaft	Examine the brush is locked into place on the drive shaft
	Check for loose or broken pins on the drive shaft and replace
	Replace brushes
Unit is not polishing properly	Check if brushes are clean and dry
	Confirm glassware is only slightly damp
	Replace brushes



274GP1250

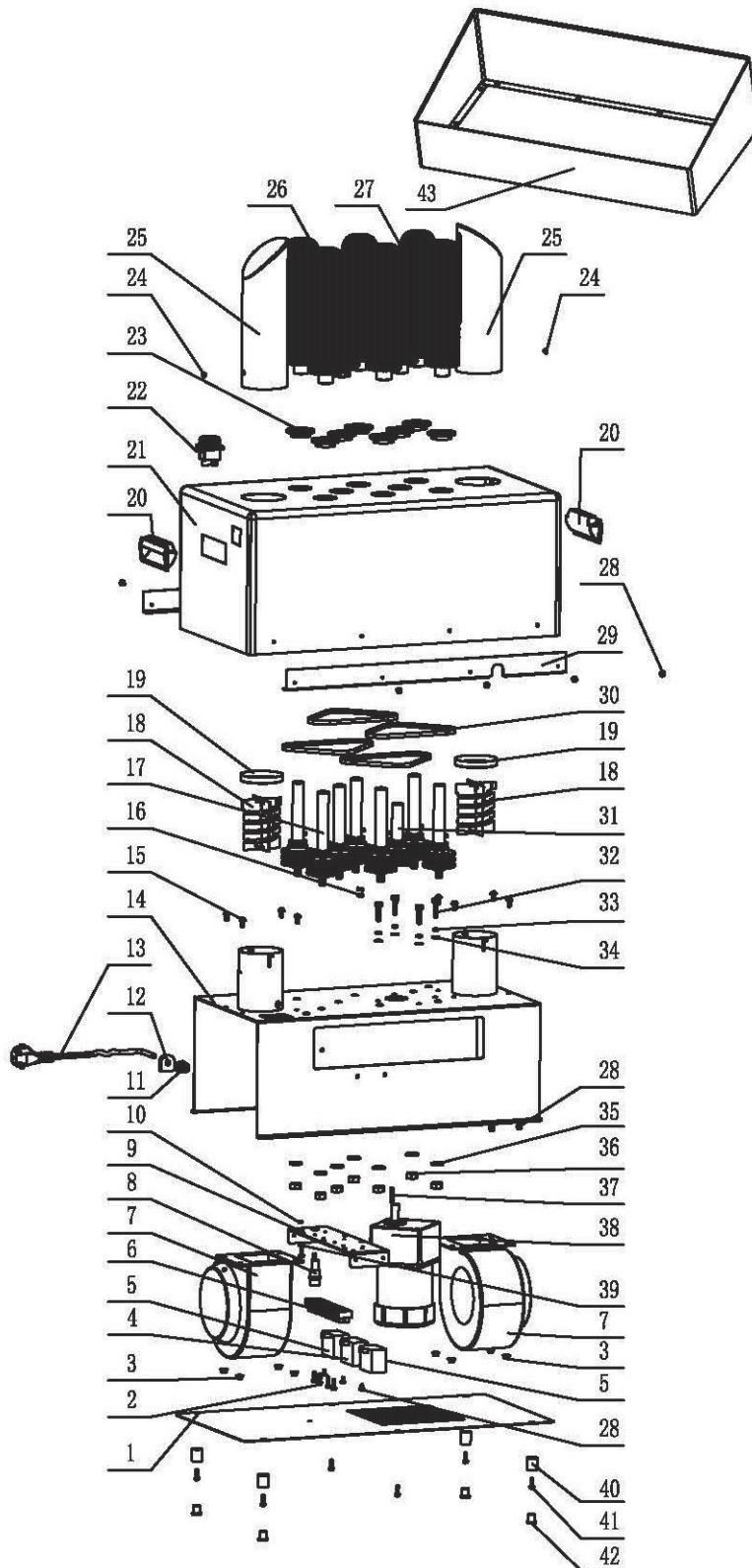
## Exploded View



No.	Part Name
1	Bottom Plate Assembly
2	M4x8 Large Flat Head Screw
3	Capacitor 1
4	Fuse
5	M5 Hex Flange Nut
6	Power Cord
7	Fan Motor
8	Power Cord Fixture
9	Wire Buckle
10	Frame Bracket Assembly
11	M5x12 Round Head Screw
12	Shaft Assembly
13	Heating Element
14	Heating Element Pressure Ring
15	Belt
16	M4 Hex Screw Nut
17	Shell Support Bar
18	Shell Support Bar
19	Handle
20	Power Switch
21	M4x4 Flat Head Screw
22	Hot Air Pipe
23	Long Brush
24	Short Brush
25	Shaft Cover
26	Drive Shaft
27	M4x10 Hexagon Stud
28	M6x20 Hexagon Screw
29	Ø6 Spring Pad
30	Ø6 Flat Pad
31	Ø10 Non-slip Pad
32	M10 Lock-Proof Hex Nut
33	Joint Block
34	Motor
35	Capacitor 2
36	Terminal
37	M4x16 Round Screw
38	Foot
39	Foot Pad

274GP1600

## Exploded View



No.	Part Name
1	Bottom Plate Assembly
2	M4*16 Round Screw
3	M5 Hex Flange Nut
4	Capacitor 2
5	Capacitor 1
6	Terminal
7	Fan Motor
8	Fuse
9	Component Fixture
10	M4 Hexagon Screw Nut
11	Wire Buckle
12	Power Cord Fixture
13	Power Cord
14	Frame Bracket Assembly
15	M5*12 Round Head Screw
16	M4*10 Hexagon Stud
17	Shaft Assembly
18	Heating Element
19	Heating Element Pressure Ring
20	Handle
21	Shell
22	Power Switch
23	Shaft cover (optional)
24	M4*4 Flat Head Screw
25	Hot Air Pipe
26	Long Brush
27	Short Brush
28	M4*8 Large Flat Head Screw
29	Shell Support Bar
30	Belt
31	Drive Shaft
32	M6*20 Hexagon Screw
33	Ø6 Spring Pad
34	Ø6 Flat Pad
35	Ø10 Non-Slip Pad
36	M10 Lock-proof Hex Nut
37	Joint Block
38	Motor
39	φ4 Screw
40	Foot
41	M4*20 Large Flat and Tip Tail Screw
42	Foot Pad
43	Brush Guard

## Equipment Limited Warranty

Noble Products warrants its equipment to be free from defects in material and workmanship for a period of 6 months. This is the sole and exclusive warranty made by Noble Products covering your Noble Products brand equipment. A claim under this warranty must be made within **6 months** from the **date of purchase** of the equipment. Only the equipment's original purchaser may make a claim under this warranty. Noble Products reserves the right to approve or deny the repair or replacement of any part or repair request. The warranty is not transferable. Noble Products Equipment installed in/on a food truck or trailer will be limited to a period of **30 days** from the original date of purchase.

### To Make a Warranty Claim:

For Warranty Inquiries contact the location where you purchased the product:

- **WebstaurantStore.com:** Contact [help@webstaurantstore.com](mailto:help@webstaurantstore.com). Please have your order number ready.
- **The Restaurant Store:** If you purchased this unit from your local store, please contact your store directly.
- **TheRestaurantStore.com:** Online purchases, call 717-392-7261. Please have your order number ready.

Failure to contact the designated location prior to obtaining equipment service may void your warranty.

Noble Products makes no other warranties, express or implied, statutory or otherwise, and **HEREBY DISCLAIMS ALL IMPLIED WARRANTIES, INCLUDING THE IMPLIED WARRANTIES OF MERCHANTABILITY AND OF FITNESS FOR A PARTICULAR PURPOSE.**

### This Limited Warranty does not cover:

- Equipment sold or used outside the Continental United States
- Use of unfiltered water (if applicable)
- Noble Products has the sole discretion on wearable parts not covered under warranty
- Equipment not purchased directly from an authorized dealer
- Equipment used for residential or other non-commercial purposes
- Equipment that has been altered, modified, or repaired by anyone other than an authorized service agency
- Equipment where the serial number plate has been removed or altered.
- Damage or failure due to improper installation, improper utility connection or supply, and issues resulting from improper ventilation or airflow.
- Defects and damage due to improper maintenance, wear and tear, misuse, abuse, vandalism, or Act of God.

Any action for breach of this warranty must be commenced within 6 months of the date on which the breach occurred. No modification of this warranty, or waiver of its terms, shall be effective unless approved in a writing signed by the parties. The laws of the Commonwealth of Pennsylvania shall govern this warranty and the parties' rights and duties under it. Noble Products shall not under any circumstances be liable for incidental or consequential damages of any kind, including but not limited to loss of profits.