

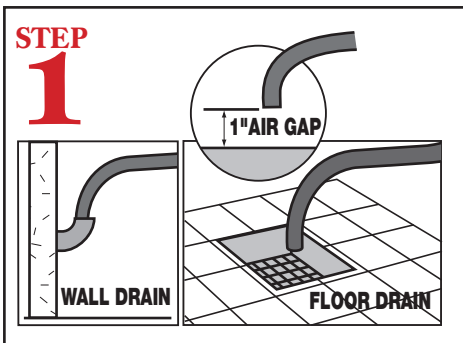
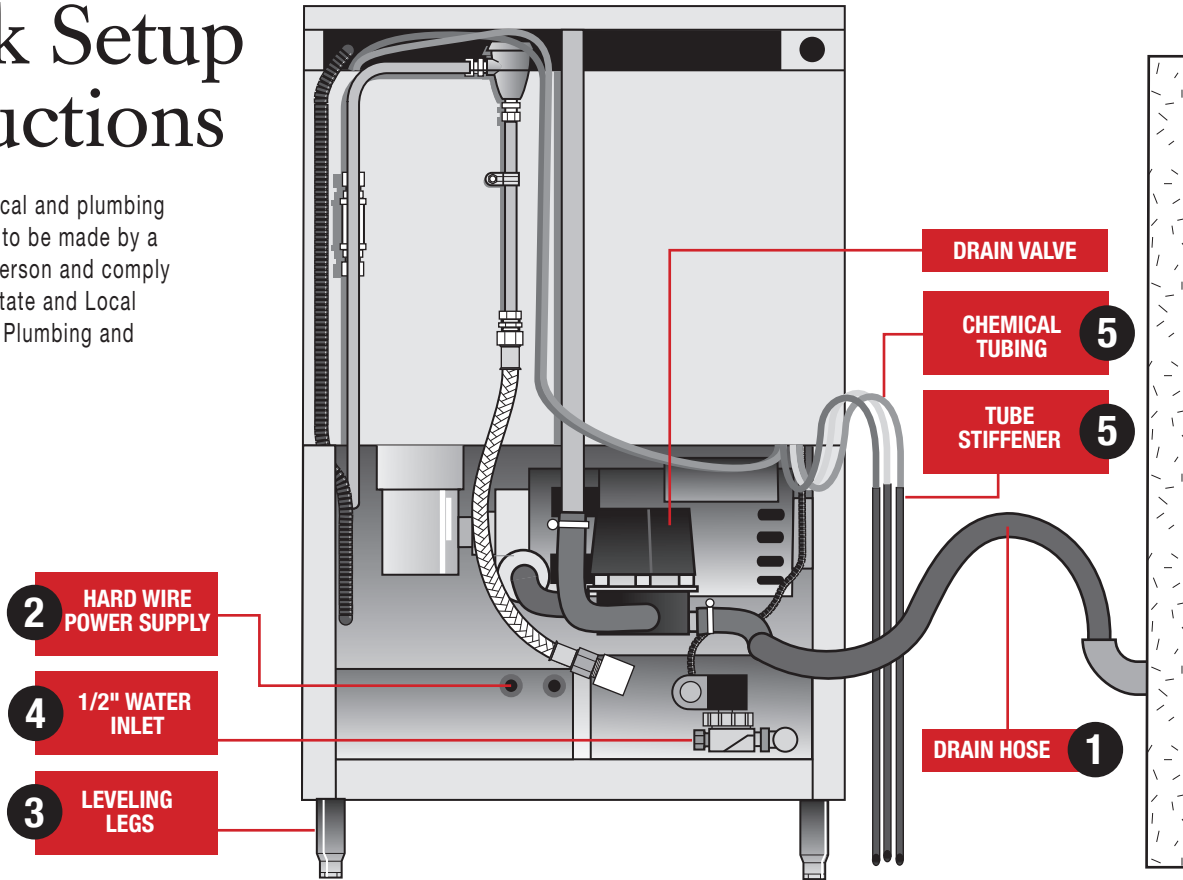
GL-X Quick Setup Instructions

GL-X REAR VIEW

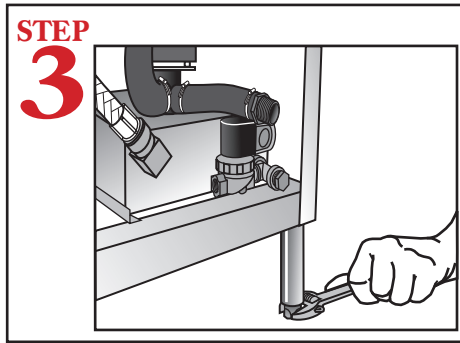


800-854-6417

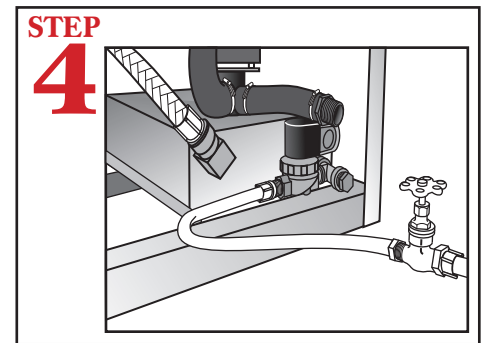
WARNING: Electrical and plumbing connections need to be made by a licensed service person and comply with all Federal, State and Local Health, Electrical, Plumbing and Safety codes.



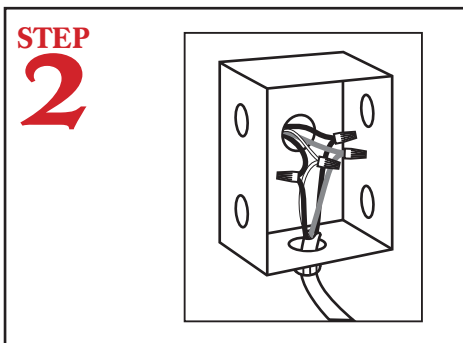
Connect the drain hose to wall or floor drain. The floor drain must have a 1 inch air gap between drain hose and floor drain.



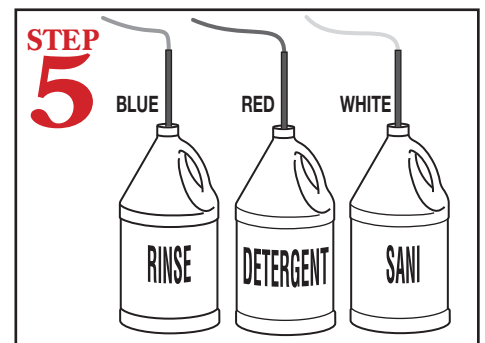
Level dishmachine by adjusting leveling legs. Dishmachine must be level front and back to ensure proper performance.



Connect dishmachine to hot water source, recommended 140° (120° minimum temperature required) using a 1/2" connector.



To connect hard wire power supply from the dishmachine to the power box, remove front panel.



Insert tube stiffener with chemical tubing into corresponding chemical dispensers.

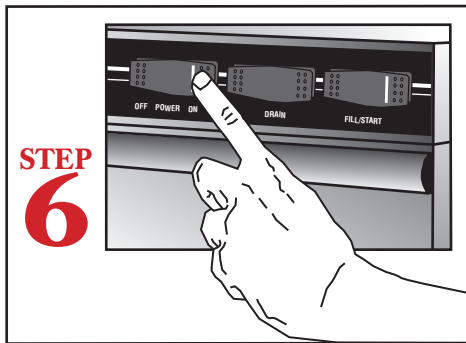
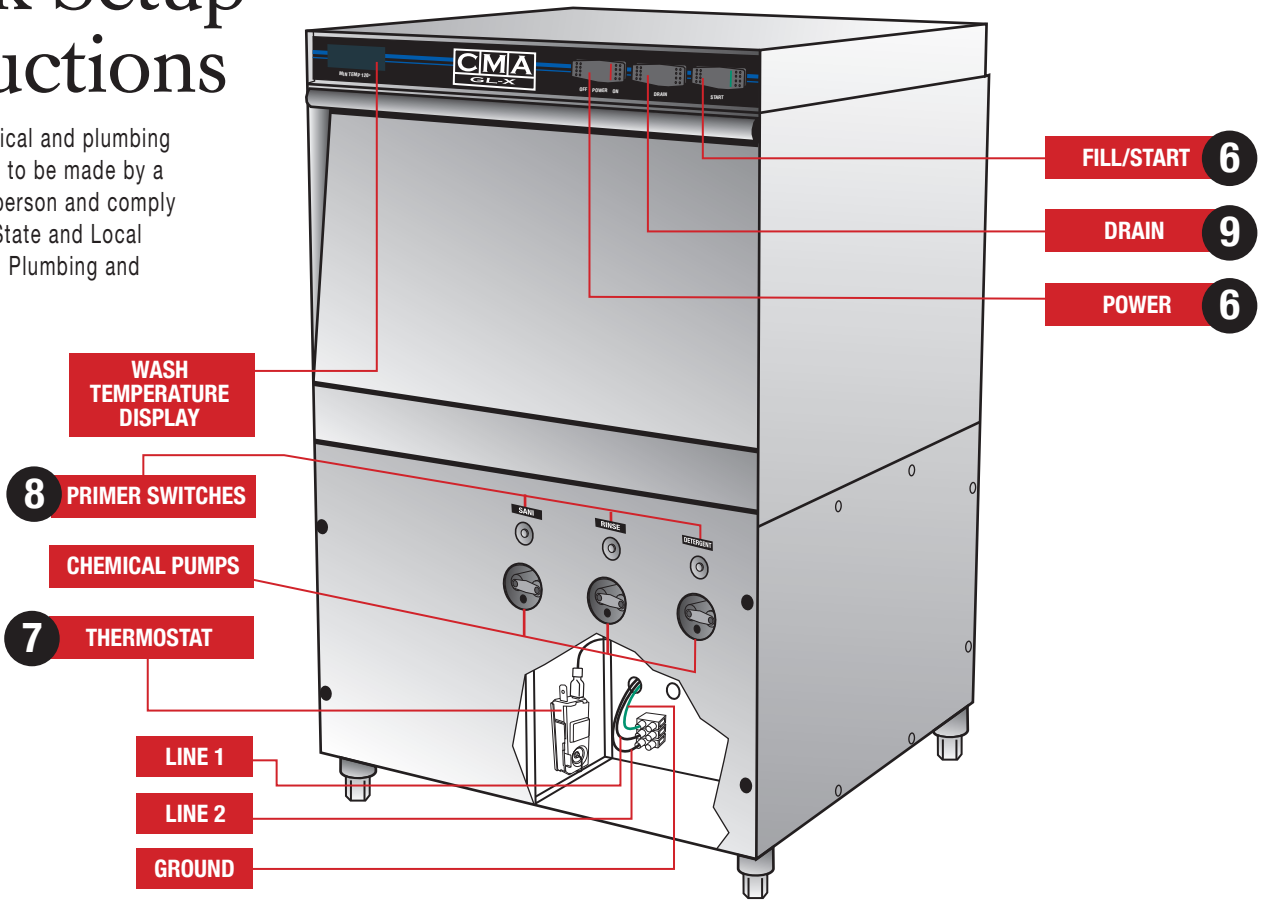
GL-X Quick Setup Instructions

GL-X FRONT VIEW



800-854-6417

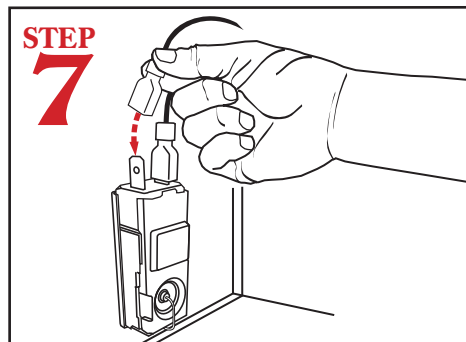
WARNING: Electrical and plumbing connections need to be made by a licensed service person and comply with all Federal, State and Local Health, Electrical, Plumbing and Safety codes.



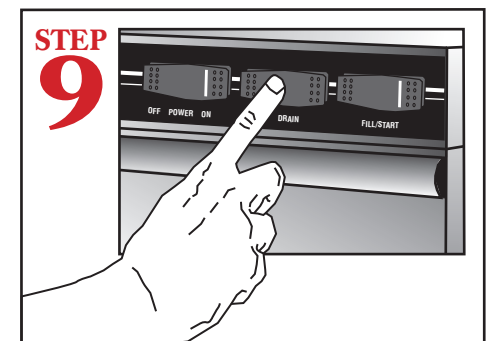
STEP 6
Turn Power Switch to "ON" position. Hold down "FILL" Switch until water reaches spray arm level.



STEP 8
Press and hold down "SANI", "DETERGENT" and "RINSE" switches to prime chemicals. This step must be repeated each time chemical containers are changed.



STEP 7
Reconnect thermostat wire. Set temperature at 120°F - 140°F.



STEP 9
Push "DRAIN" switch to empty machine.