



Planetary Mixers User's Manual

177GMIX30

8/2021

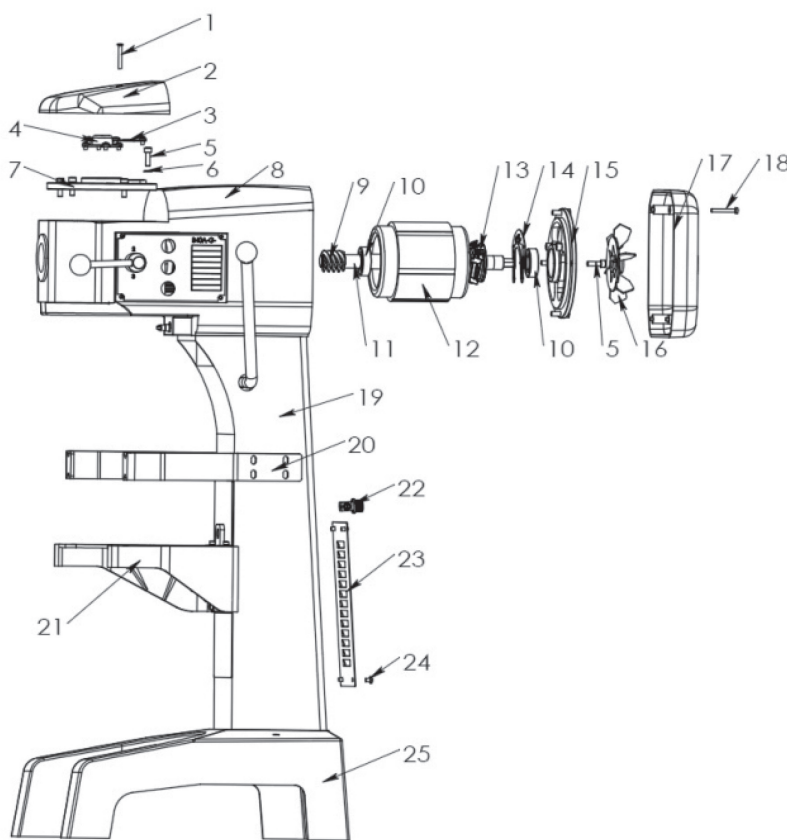
Please read the manual thoroughly prior to equipment set-up, operation, and maintenance.

Index

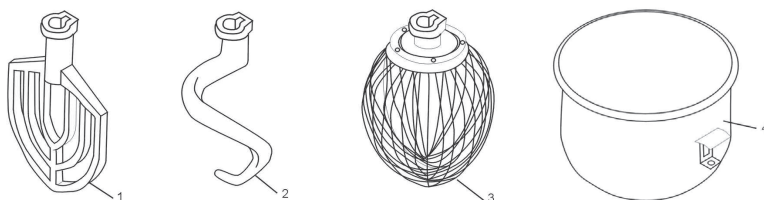
Parts Overview	3
Standard Accessories.....	4
Operation Instructions.....	4
Mixer Capacity Chart	5
Troubleshooting	6
Circuit Diagram	6
Figure 1 Axle Diagram	7
Figure 2 Gear Axle Diagram	8
Figure 3 Gear Axle I Diagram	9
Figure 4 Turning Plate & Mixing Axle Diagram.....	10
Figure 5 Lifting Unit	11
Figure 6 Fork & Speed Shaft	12
Warranty Information	13

Parts Overview

ITEM	DESCRIPTION	#
1	Screw M6*45	1
2	Top Cover	1
3	Two Axle Cover	1
4	Center Axle Cover	1
5	Screw M8*25	8
6	Ring	4
7	Bearing Cover	1
8	Body	1
9	Spiral	1
10	Bearing 6205	2
11	Motor Rotor	1
12	Stator of Motor	1
13	Motor Switch-A	1
14	Motor Switch-B	1
15	Rear Bearing Cover	1
16	Fan	1
17	Rear Cover	1
18	Screw M6*45	4
19	Stand	1
20	Bowl's Board	2
21	Arm	1
22	Cable Joint	1
23	Cover	1
24	Screw M6*12	4
25	Seat	1



Standard Accessories



Item	Description	Qty
1	Flat Beater	1
2	Dough Hook	1
3	Whisk	1
4	Bowl	1

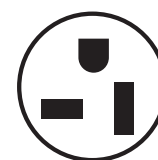
NOTES:

- Any agitator is easily installed by simply raising it onto the mixing axle, and then rotating it clockwise on the shaft until it locks into place. To remove, raise the agitator on the shaft until it clears the lock and then rotate counter-clockwise and lower.
- All of the accessories are precisely fitted to the bowl, have rounded corners, and are easily removable for cleaning.
- DO NOT hose down mixer.
- DO NOT operate mixer with wet hands.
- ALWAYS unplug mixer from electrical supply prior to any maintenance or repairs.

Operation Instructions



Please ensure that your power supply matches your machine



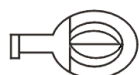
NEMA 5-20P, 120V



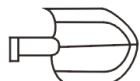
For changing the speed: Please stop machine first before changing speed in order to avoid damage to the gear box. Also make sure that the bowl is in fully lifted position and the guard is closed.

- Slow Speed is the middle, #1 setting. The knob will be facing forward.
- Medium Speed is the bottom, #2 setting. The knob will be straight down.
- High Speed is the top, #3 setting. The knob will be straight up.

Mixing: Always use the correct attachment for the job.



A. Whisk: Suitable for mixing liquids and soft ingredients, can work in all speeds. Do not run for more than 15 minutes.



B. Flat Beater: Suitable for mixing dry ingredients, can work in low & medium speeds only. Do not use in high speed. Do not run for more than 15 minutes.



C. Dough Hook: Suitable for mixing dough, can work in low & medium speeds only. Do not use in high speed, do not run for more than 20 minutes. Absorption ratio must be more than 50%. Refer to mixer capacity chart.

Mixer Capacity Chart

Product	Agitator and Speed	Maximum Bowl Capacity 10 Qt. / 20 Qt.
Bread and Roll Dough - 60 % AR	Dough Hook - 1st only	5 lb. / 20 lb.
Heavy Bread Dough - 55% AR	Dough Hook - 1st only	3 lb. / 15 lb.
Pizza Dough, Thin - 40% AR	Not Recommended	-
Pizza Dough, Medium - 50% AR	Not Recommended	-
Pizza Dough, Thick - 60% AR	Not Recommended	-
Raised Donut Dough - 65% AR	Dough Hook - 1st and 2nd	2 lb. / 8 lb.
Mashed Potatoes	Flat Beater	5 lb. / 12.5 lb.
Waffle or Hot Cake Batter	Flat Beater	4 Qt. / 8 Qt.
Egg Whites	Wire Whisk	1 Qt. / 1 Qt.
Whipped Cream	Wire Whisk	1 Qt. / 2 Qt.
Cake Batter	Flat Beater	8 lb. / 20 lb.

When mixing dough (pizza, bread, or bagels), check your "AR" absorption ratio - water weight divided by flour weight. Above capacities based on 12% flour moisture at 70°F water temperature. If high gluten flour is used, reduce above dough batch size by 10%.

Example: If recipe calls for 5 lb. of water and 10 lb. of flour, then $5 \text{ divided by } 10 = 0.50 \times 100 = 50\% \text{ AR}$.

- 2nd Speed should never be used on mixtures with less than 50% AR.
- Do not use attachments on hub while mixing.

When calculating the correct size mixer for your application, here are some helpful weights and measures:

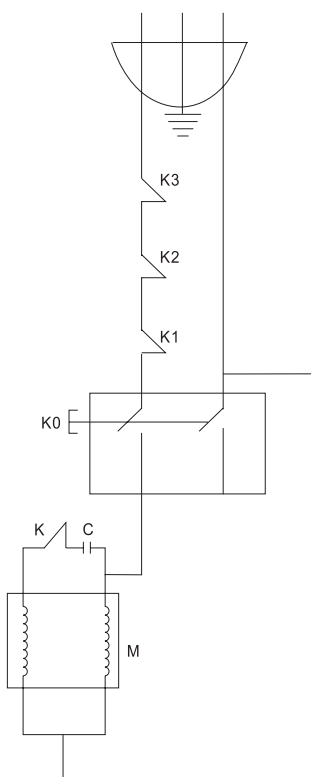
- **8.3 lb. = 1 gallon of water – 2.08 lb. = 1 Quart.**

Troubleshooting

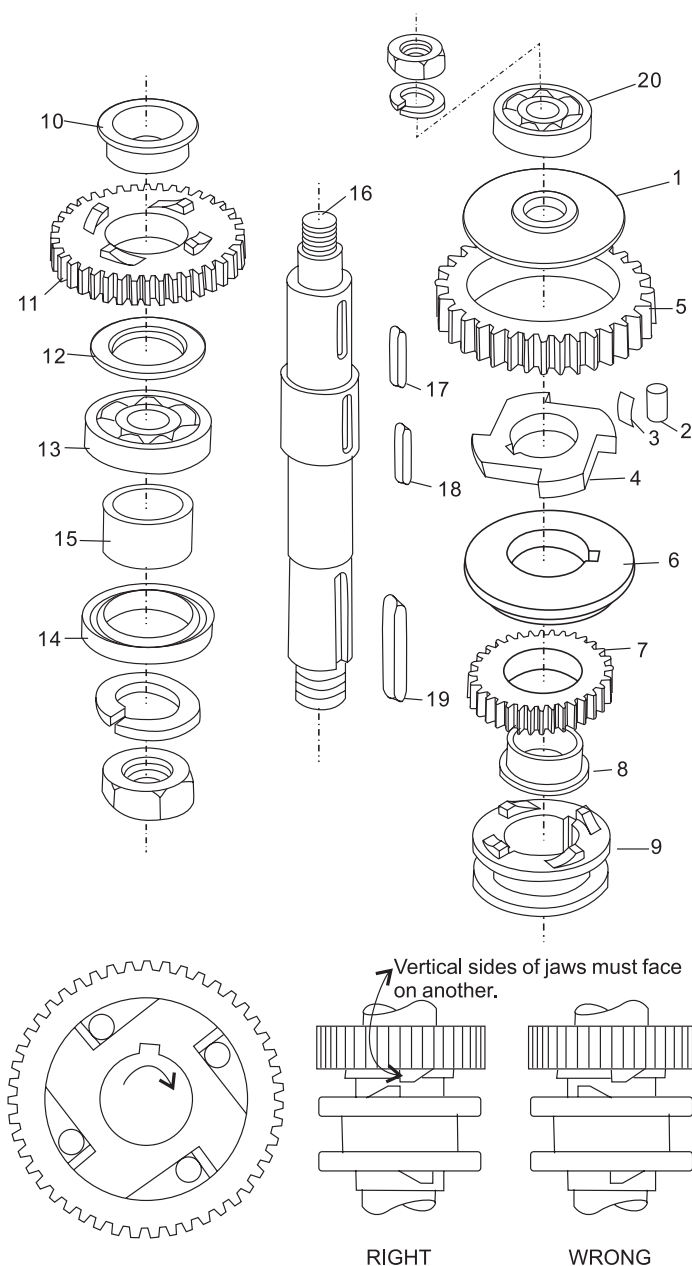
Trouble	Possible Causes	Solution
The axles can't work when operating the machine	Poor contact of the electrical equipment	Check the Plug
The mixing bowl is out of position	Moving direction is not correct	Change
Leaks oil	Sealing washer is damaged	Change
Difficult to move the bowl up and down	Slideway is rusted	Clean the slideway and lubricate
The motor is overheated and speed is down	The voltage is not enough, or incorrect speed	Check the voltage or use lower speed
Noise and overheating	Poor lubrication	Add or change lubrication
Mixer touches bowl	The mixing device or bowl deformed	Repair or change the bowl or mixing device

Circuit Diagram

ITEM	DESCRIPTION
K0	Electromagnetic Switch
K1	Safety Covering Switch
K2	Fluctuate Safety Switch
K3	Overload Protection Switch
K	Switch
C	Capacitor
M	Motor



Axle Diagram

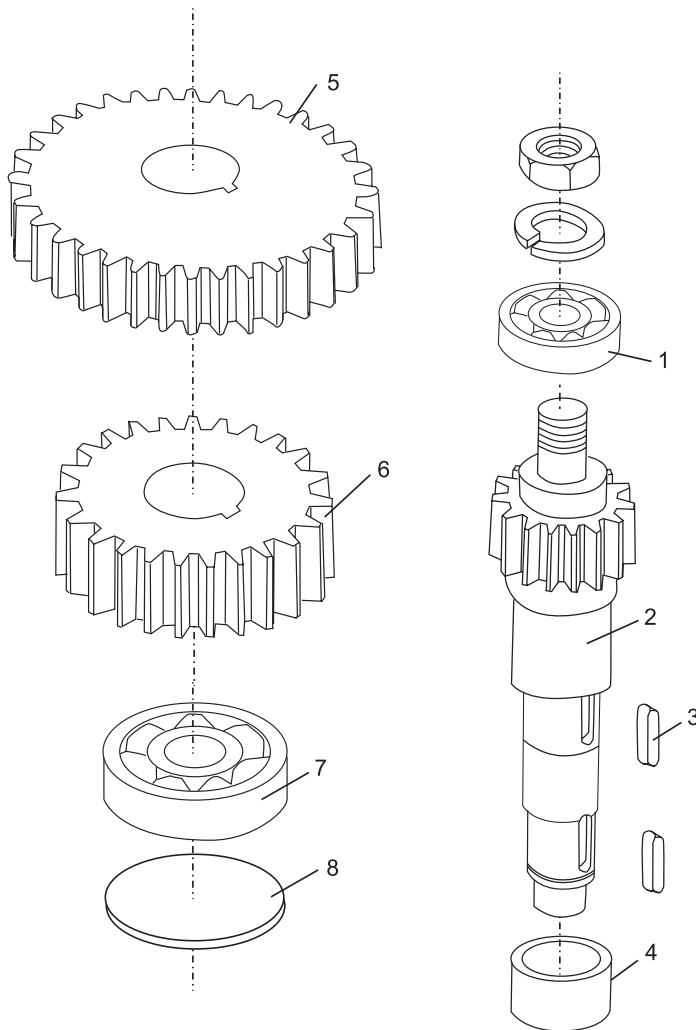


ITEM	DESCRIPTION	#
1	Baffle	1
2	Roller	6
3	Spring	6
4	Engager	1
5	Gear Ring	1
6	Dividing Ring	1
7	Joint Gear	1
8	Bearing Ring	1
9	Joint	1
10	Bearing Ring	1
11	Joint Gear 1	1
12	Ring	1
13	Bearing (6206)	1
14	Oil Seal (Pd45*52*10)	1
15	Sleeve	1
16	Axle	1
17	Key	1
18	Key	2
19	Key	1
20	Bearing (6205)	1

NOTES:

- Be sure to install in correct position (see Figure 2-1) and lubricate all of the pins in the sleeve drive when assembling.
- Joint (9) must always be raised and lowered smoothly. Be sure joint sleeve is positioned as shown in Figure 2-2.
- Check Oil Seal (14) if oil leaks from drip cup.

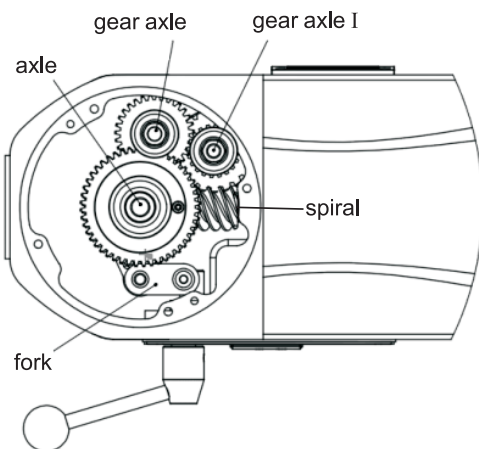
Gear Axle Diagram



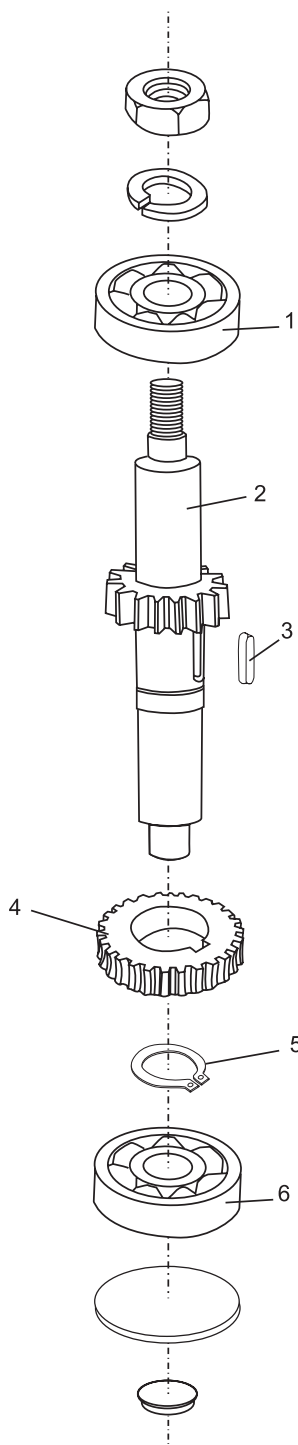
ITEM	DESCRIPTION	#
1	Bearing (6203)	1
2	Gear Axle	1
3	Key	2
4	Sleeve	1
5	High Speed Gear	1
6	Low Speed Gear	1
7	Bearing 6203	1
8	Plate	1

NOTES:

- At the center in the shaft unit. To the above is the gear shaft and gear shaft I. (see Figure 3-1)
- C-type stop ring (6/8) has to be fixed when reassembling.
- Be sure that the keys are inserted



Gear Axle I

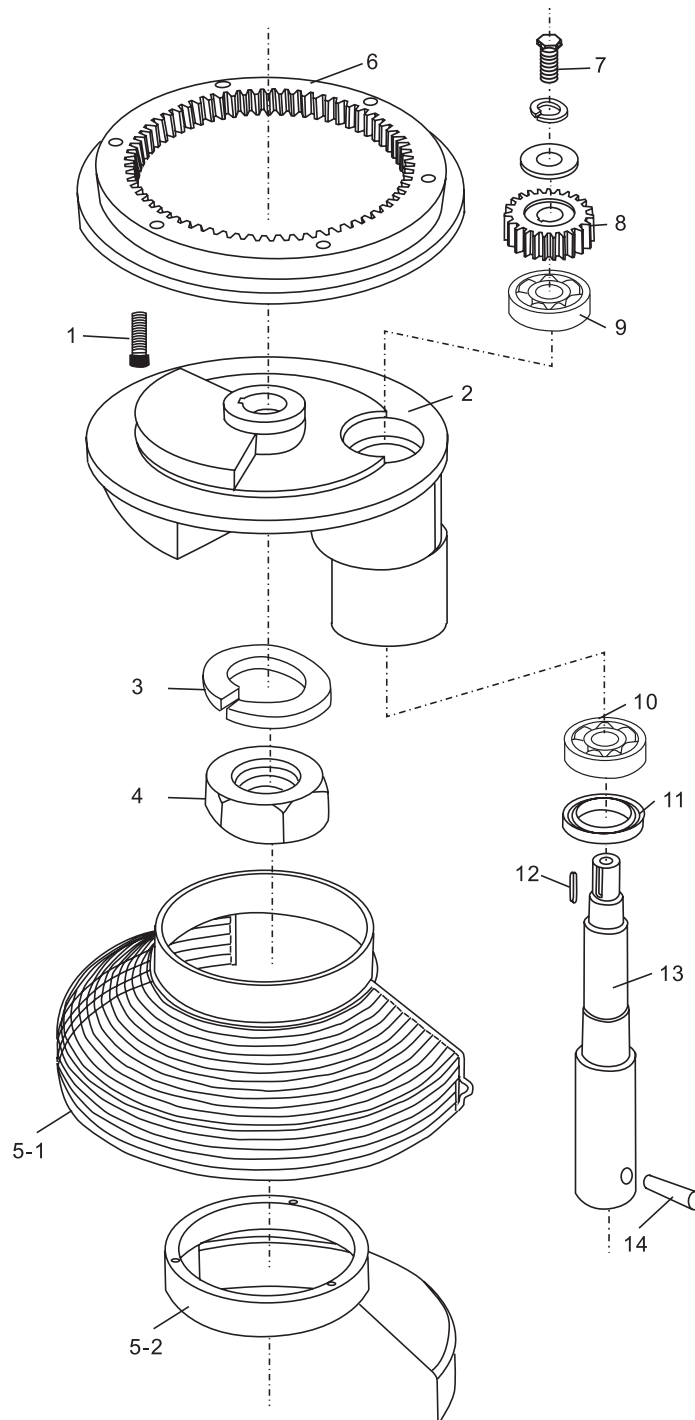


ITEM	DESCRIPTION	#
1	Bearing (6201)	1
2	Gear Axle	1
3	Key (5*14)	1
4	Gear	1
5	Stop Ring	1
6	Bearing (6201)	1

NOTES:

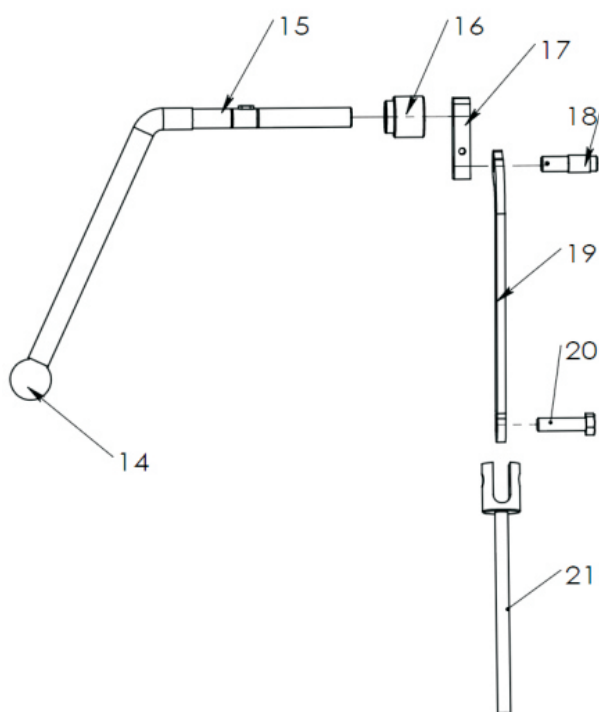
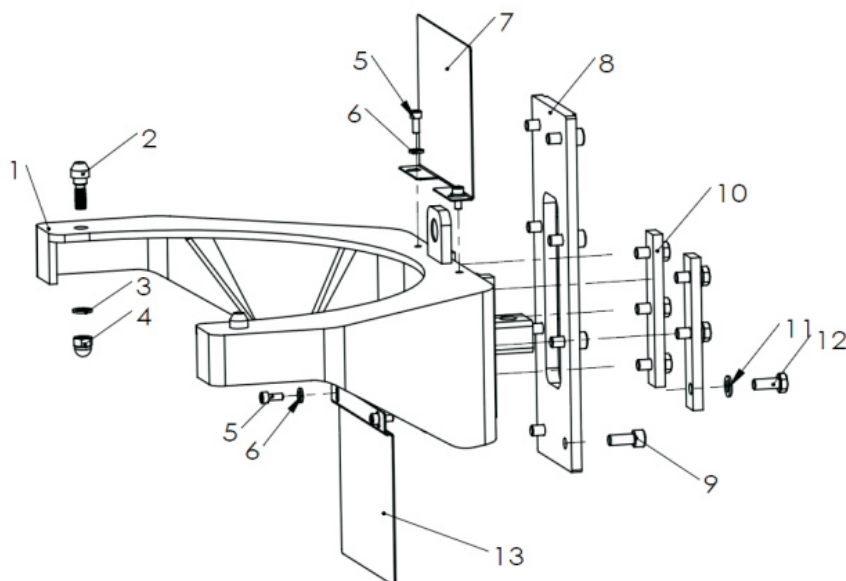
- C-type stop ring (5) has to be fixed when reassembling

Turning Plate & Mixing Axle Diagram



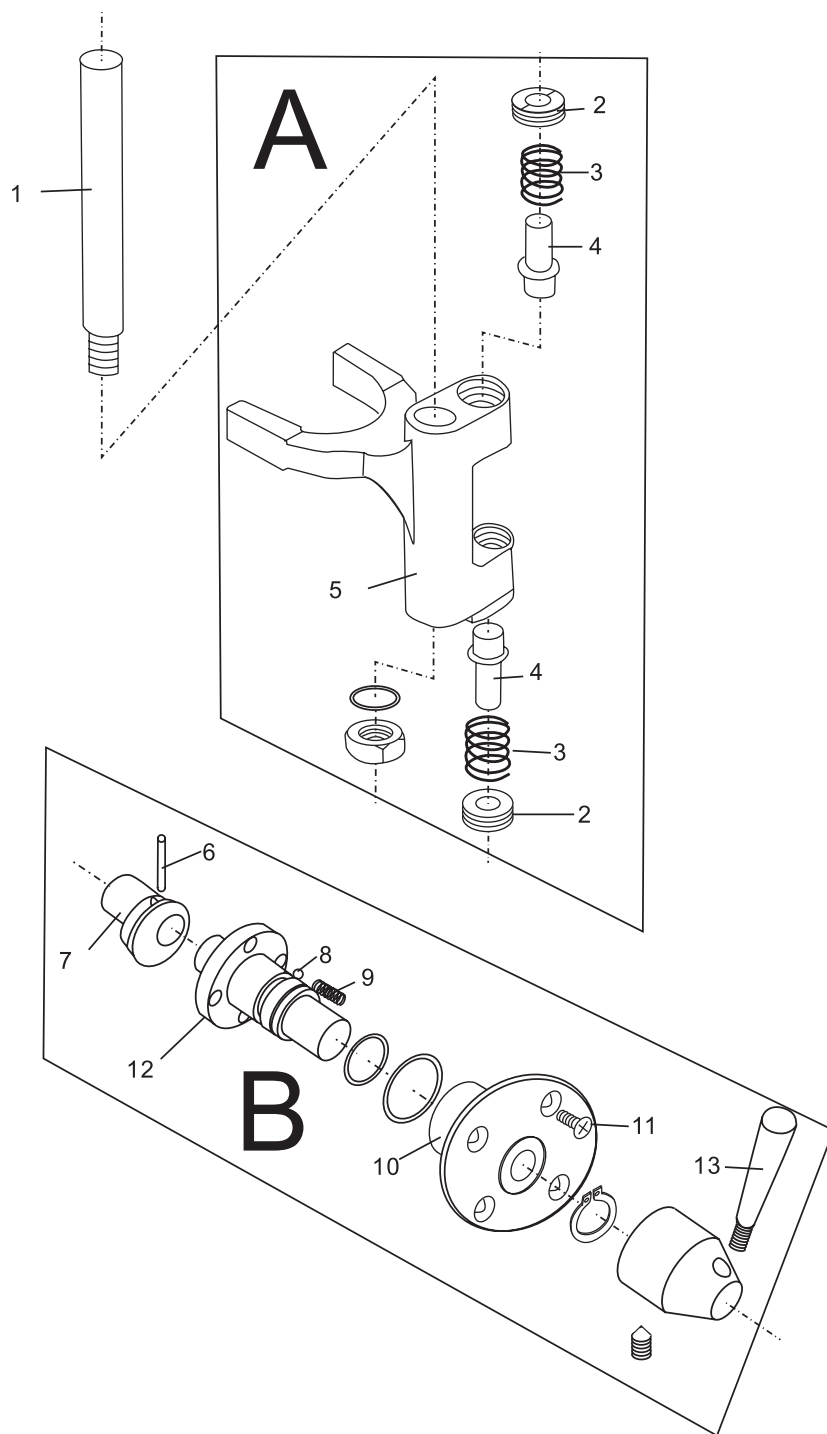
ITEM	DESCRIPTION	#
1	Screw (M6*35)	6
2	Turning Plate	1
3	Ring	1
4	Nut	1
5-1	Safety Net (Locomotion)	1
5-2	Safety Net (Immobility)	1
6	Inner Gear	1
7	Screw	1
8	Planetary Gear	1
9	Bearing (6204)	1
10	Bearing (6206)	1
11	Oil Seal (Pd35*56*12)	1
12	Key	1
13	Mixing Axle	1
14	Pin	1

Lifting Unit



ITEM	DESCRIPTION	#
1	Arm	1
2	Bowl's Screw	2
3	Ring	2
4	Nut	2
5	Scaw M5*12	4
6	Gasket	4
7	Arm's Upper Board	1
8	Guide Post Plate	1
9	Scaw M8*20	8
10	Flat Plate	2
11	Gasket	6
12	Screw M8*20	6
13	Arm's Lower Board	1
14	Plastic Ball	1
15	Handle	1
16	Flange Sleeve	1
17	Handle Crank	1
18	Small Shaft of Pull Rod	1
19	Pull Rod	1
20	Screw M12*45	1
21	Handle Hanging Shaft	1

Fork & Speed Shaft



ITEM	DESCRIPTION	#
1	Axle	1
A	2 Nut	1
	3 Spring	1
	4 Shaft	1
	5 Fork	1
	6 Pin	1
B	7 Eccentricity Knot	1
	8 Steel Ball	1
	9 Speed Spring	1
	10 Speed Block	1
	11 Screw	1
	12 Shaft	1
	13 Handle	1

NOTES:

- The speed selector/shifting mechanism is designed for simplicity and reliability. It features three mixing speeds.
- Speed selection is made by aligning the pointer of the shifter handle with the proper number on the shift selector. Stop the mixer before making any speed changes.
- Apply sealant to the shift selector assembly and install it.

Equipment Limited Warranty

Galaxy warrants its equipment to be free from defects in material and workmanship for a period of 6 months. This is the sole and exclusive warranty made by Galaxy covering your Galaxy brand equipment. A claim under this warranty must be made within **6 months** from the **date of purchase** of the equipment. Only the equipment's original purchaser may make a claim under this warranty. Galaxy reserves the right to approve or deny the repair or replacement of any part or repair request. The warranty is not transferable. Galaxy Equipment installed in/on a food truck or trailer will be limited to a period of **30 days** from the original date of purchase.

To Make a Warranty Claim:

For Warranty Inquiries contact the location where you purchased the product:

- **WebstaurantStore.com:** Contact help@webstaurantstore.com. Please have your order number ready.
- **The Restaurant Store:** If you purchased this unit from your local store, please contact your store directly.
- **TheRestaurantStore.com:** Online purchases, call 717-392-7261. Please have your order number ready.

Failure to contact the designated location prior to obtaining equipment service may void your warranty.

Galaxy makes no other warranties, express or implied, statutory or otherwise, and **HEREBY DISCLAIMS ALL IMPLIED WARRANTIES, INCLUDING THE IMPLIED WARRANTIES OF MERCHANTABILITY AND OF FITNESS FOR A PARTICULAR PURPOSE.**

This Limited Warranty does not cover:

- Equipment sold or used outside the Continental United States
- Use of unfiltered water (if applicable)
- Galaxy has the sole discretion on wearable parts not covered under warranty
- Equipment not purchased directly from an authorized dealer
- Equipment that has been altered, modified, or repaired by anyone other than an authorized service agency
- Equipment where the serial number plate has been removed or altered.
- Damage or failure due to improper installation, improper utility connection or supply, and issues resulting from improper ventilation or airflow.
- Defects and damage due to improper maintenance, wear and tear, misuse, abuse, vandalism, or Act of God.

Any action for breach of this warranty must be commenced within 6 months of the date on which the breach occurred. No modification of this warranty, or waiver of its terms, shall be effective unless approved in a writing signed by the parties. The laws of the Commonwealth of Pennsylvania shall govern this warranty and the parties' rights and duties under it. Galaxy shall not under any circumstances be liable for incidental or consequential damages of any kind, including but not limited to loss of profits.