

Hardware preparation:

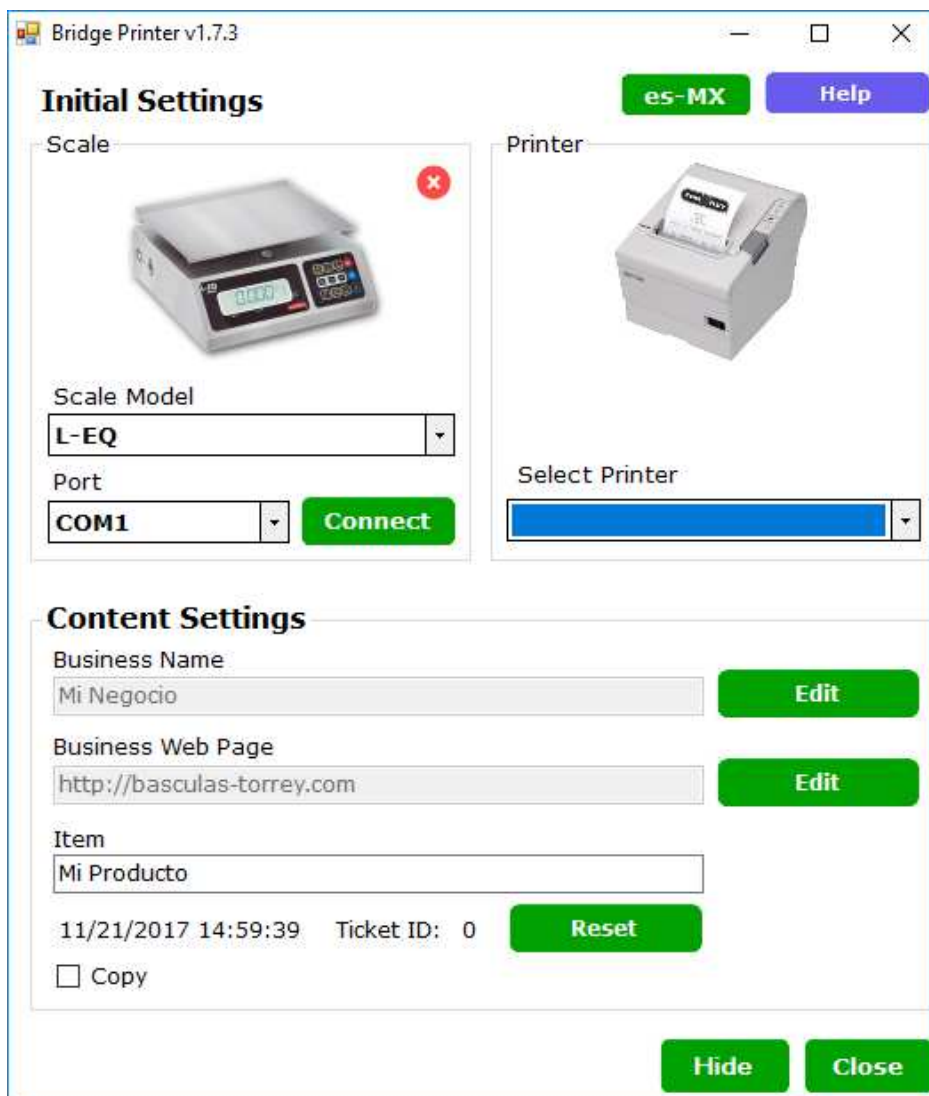
1. Connect the printer to the computer using the USB.
2. Install the printer's driver.
3. Run the Bridge Printer Installer, follow the instructions and wait until the software be installed.
4. Connect the scale to the PC and wait until the USB driver be installed.

Software using:

1. Locate the Bridge Printer software and execute it:



2. The Bridge Printer interface will be opened:



3. Select your scale model using the “Scale Model” drop-down list:

Scale



Scale Model

PC

4. Select the COM Port assigned to the scale and press “Connect”:

Port

COM1

Connect

5. Search and select your printer in the “Select Printer” drop-down list:

Printer



Select Printer

6. Edit your business name and webpage using the “Edit” buttons:

Content Settings

Business Name

My Store

Edit

Business Web Page

http://www.tor-rey.com

Edit



7. Type the name of your first product:

Item
Apple

11/21/2017 15:38:59 Ticket ID: 0 **Reset**

8. According to your scale model please follow the steps:

PC and LPC models:

- Place the product in the scale's platform.
 - Type the unit price, then press  key.
 - The scale will send the weight, unit price and total price to the software.
 - If you need to add more products, edit directly the Item description and repeat the previous step.
- Once you had finished to add products, you must to press  key while the total sum be displayed:



- The printer will print a ticket like this:

```
My Store
http://basculas-torrey.com
-----
Ticket ID: 6
Date: 12/09/2017 09:05:58
-----
Apples
 10.00 lb
$ 0.50 /lb
ART. 1 $ 5.00

Oranges
 50.00 lb
$ 0.70 /lb
ART. 2 $ 35.00


Bannanas
 30.00 lb
$ 0.20 /lb
ART. 3 $ 6.00

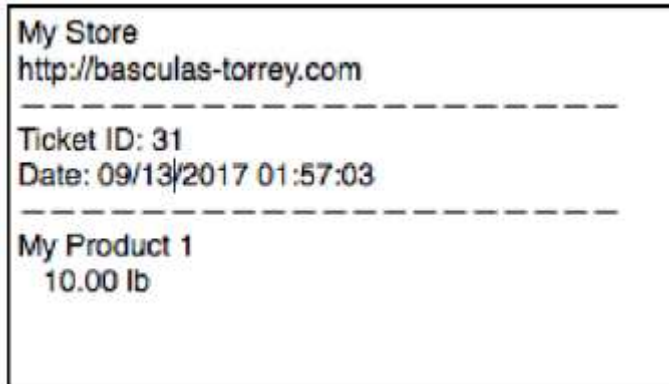
TOT $ 46.00
```

LEQ model:

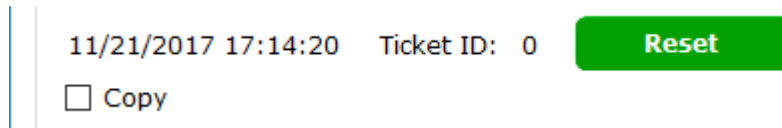
- Place the product in the scale's platform.



- Press  key.
- The scale will send the weight data to the software and the printer will print a ticket like this:



- If you need to add more products, edit directly the Item description and repeat the previous step.
9. The software has a counter that will show the quantity of tickets that you had printed. Also, you can check the "Copy" option in order to print a copy of the ticket.



Use the "Reset" button to reset the Ticket ID counting.