

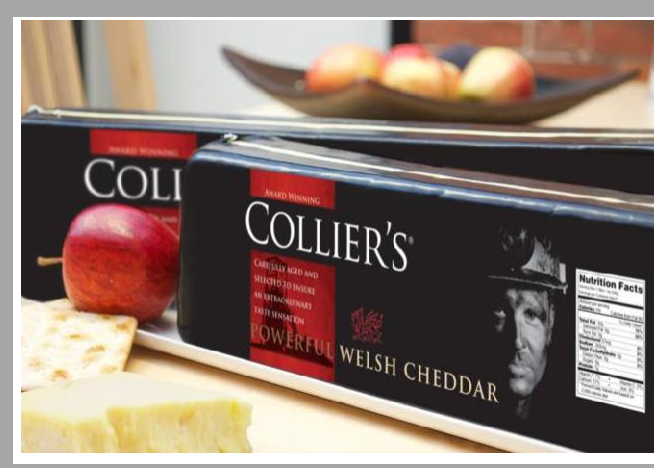


POWERFUL WELSH CHEDDAR

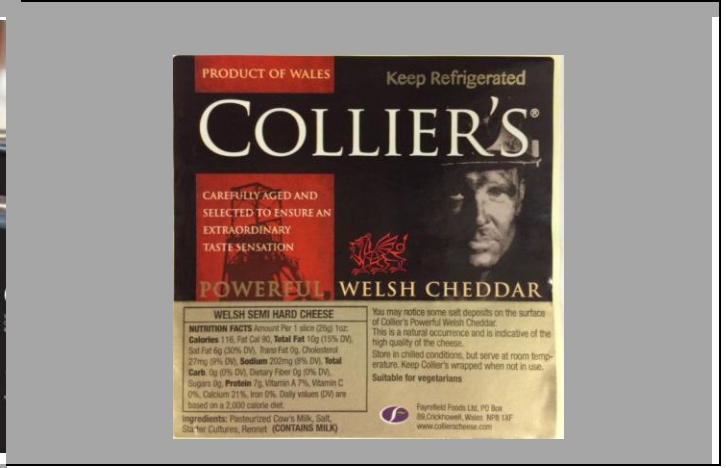
Item Number :	<u>204933</u>	Country of Origin :	<u>ENGLAND</u>
Pack Size :	<u>2/5.5 LBS</u>	RW or EX weight :	<u>RW</u>
Brand on Box	<u>COLLIER'S</u>	Brand on Item:	<u>COLLIER'S</u>

ON Box	ON Product	UPC :	<u>0 34463 01199 0</u>	Date Code :	<u>PACK DATE</u>
		GTIN :	<u>10 0 34463 01199 7</u>	Date Code Format :	<u>MM.DD.YY</u>
		EAN :	<u> </u>	Date Code Location:	<u>CASE / PRODUCT</u>

Product Image



Product Label



Product Properties

Ingredient/Product Statement :

Pasteurized Cow's Milk, Salt, Starter Cultures, Rennet

**there may be salt deposits on the surface of the cheese, which is natural and indicative of the high quality of the cheese

Contains: Milk

Kosher (Y/N; Certification)	N	Rind (Y/N)	N
Halal (Y/N)	N	Rind Edible (Y/N)	N/A
Organic (Y/N)	N	RBST Free (Y/N)	Y
Piece Count (Case)	2	Preservatives (Y/N)	N
Maturity/Aged	Up to 18 mos.	Lactose Free (Y/N)	N
Milk Type	Cow	GMO Free (Y/N)	Y
Rennet Type	Vegetarian	Casing (Y/N; Type)	N/A
Special Pre-Order (Y/N)	N	Pasteurized/Thermalized/Raw/Other	Pasteurized

Shelf Life:

Shelf Life from Production	9 MONTHS	Shelf Life if Frozen	N/A
Storage Temperature	33 - 40°	Shelf Life Defrosted	N/A

Physical Properties:

Color	PALE YELLOW
Cheese Type	HARD CHEDDAR
Aroma & Flavor	POWERFUL INTENSE CHEDDAR FLAVOR
Texture	CREAMY WITH CRUNCHY SALT DEPOSITS**
Appearance	UNIFORM EVEN SHAPE
Body	FIRM, SMOOTH
Shape	LOAF

Chemical Analysis:

		Specification	Range
Moisture	%	35.4	
Fat in Dry Matter	%	52.9	
Milk Fat	%	34.4	
Salt	%	1.97	
Water Activity			
pH			
Ash			

Microbiological Analysis:

	Unit	Specification	Method
Coliforms	cfu/g	<10	
E. coli.	cfu/g	<10	
Yeast	cfu/g	<100	
Moulds	cfu/g	<100	
Salmonella	cfu/g	Absent/25g	
Listeria	cfu/g	Absent/25g	
Enterobacteriaceae	cfu/g	<10	
Staphylococcus aureus	cfu/g	<10	
Staphylococcus coagulase	cfu/g		

Nutritionals

(*Daily Value % Based on a 2,000 Calorie Diet)

Serving Size: 100 g

Serving Size: 1 inch slice (28g) 1oz

Servings Per Container: varies

Servings Per Container: varies

	Per Serving	DV%
Calories:	414	
Total Fat (g)	35	53%
<i>*Changed from 65-78g :</i>		
Saturated Fat (g):	21	107%
Trans Fat (g):	0	
Cholesterol (mg):	96	32%
Sodium (mg)	721	28%
<i>*Changed from 2,400-2,300mg:</i>		
Total Carbohydrate (g)	0	0%
<i>*Changed from 300-275g:</i>		
Dietary Fiber (g)	0	0%
<i>*Changed from 25-28g :</i>		
Total Sugars (g):	0	
Added Sugars	n/a	n/a
Protein (g):	25	
Vitamin D (mcg)	n/a	n/a
<i>*Changed from 400IU (10µg) - 20µg:</i>		
Calcium (mg)	975	75%
<i>*Changed from 1,000-1,300mg:</i>		
Potassium (mg)	n/a	n/a
<i>*Changed from 3,500-4,700mg:</i>		
Iron:	0	0%

	Per Serving	DV%
Calories:	116	
Total Fat (g)	10	15%
<i>*Changed from 65-78g :</i>		
Saturated Fat (g):	6	30%
Trans Fat (g):	0	
Cholesterol (mg):	27	9%
Sodium (mg)	202	8%
<i>*Changed from 2,400-2,300mg:</i>		
Total Carbohydrate (g)	0	0%
<i>*Changed from 300-275g:</i>		
Dietary Fiber (g)	0	0%
<i>*Changed from 25-28g :</i>		
Total Sugars (g):	0	
Added Sugars	n/a	n/a
Protein (g):	7	
Vitamin D (mcg)	n/a	n/a
<i>*Changed from 400IU (10µg) - 20µg:</i>		
Calcium (mg)	273	21%
<i>*Changed from 1,000-1,300mg:</i>		
Potassium (mg)	n/a	n/a
<i>*Changed from 3,500-4,700mg:</i>		
Iron:	0	0%

Packaging

Cases Per Pallet	204	Case Dimensions (in.)	14.75" x 6.25" x 4"
Block & Tier	17 x 12	Unit Dimensions (in.)	14.5" x 3" x 3.5"
Case Cube (ft^)	0.2134	Gross Weight (Avg.)	12 lbs
Packaging Type	BLACK CRYOVAC	Tare Weight	1 lb
		Net Weight (Avg.)	11 lbs


Allergen List

The first column indicated the allergens that may be found in the product, either by addition or by cross contamination. The second column indicates the allergens that are present in other products that are run on the same equipment but at a different time, in the plant. The third column indicates whether any of those ingredients are present in the plant.

Each square is answered with a YES or NO and, when applicable, the name of an ingredient.

Components	Present in Product	Present in Other Products Manufactured on the Same Line	Present in the Same Manufacturing Plant
<i>Peanuts (including peanut oil)</i>	No	No	No
<i>Tree Nuts</i>	No	No	No
<i>Sesame Seeds</i>	No	No	No
<i>Milk & derivatives (Specify: milk, casein, whey, etc)</i>	Yes; Milk	Yes; Milk	Yes; Milk
<i>Eggs</i>	No	No	No
<i>Fish</i>	No	No	No
<i>Shellfish</i>	No	No	No
<i>Soy (excluding soy oil)</i>	No	No	No
<i>Wheat (Gluten)</i>	No	No	No
<i>Sulphites</i>	No	No	No
<i>Corn</i>	No	No	No
<i>Poppy Seeds</i>	No	No	No
<i>Sunflower Seeds</i>	No	No	No
<i>MSG (monosodium glutamate)</i>	No	No	No
<i>Tartrazine</i>	No	No	No

Case Label

ATALANTA COLLIERS POWERFUL CHEDDAR 2x2.5kg	
PO: 05 - 12345 File: 12 Shipping Ref: 12345 Total Items: 2	
<small>Pack Date</small> MM.DD.YY	<small>Rot/Job No:</small> 1234/5678
	<small>Net Wt (lb)</small> 11.00
KEEP REFRIGERATED	
	

Supplier No.	S212
Manufacturer No.	F20LAN
Audit / Expiry Date	BRC / APR 2018