



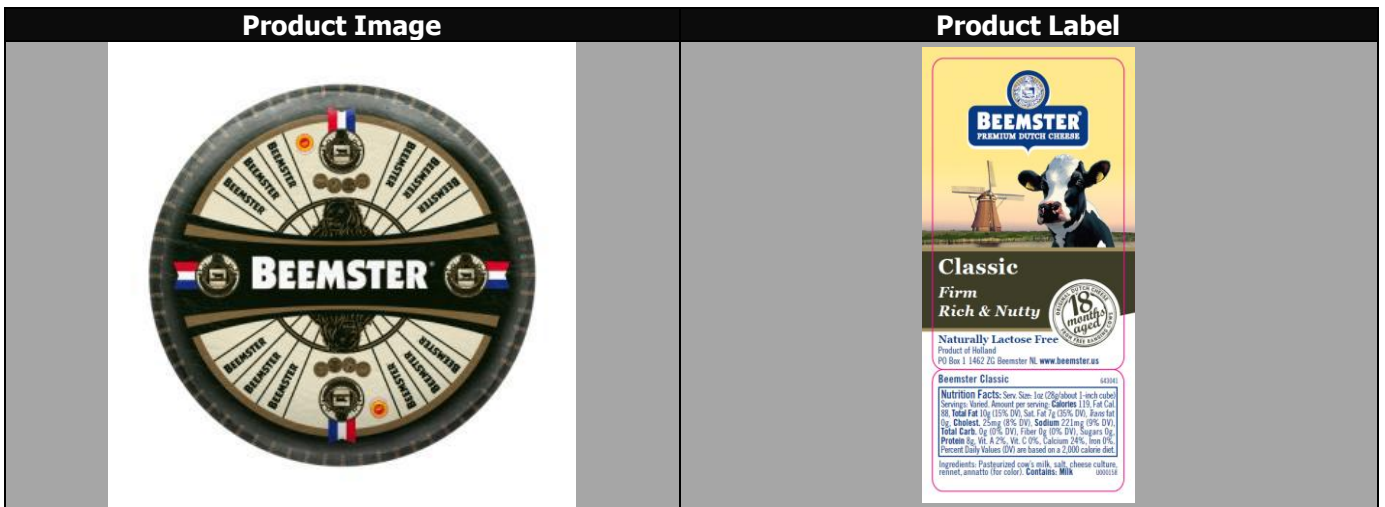
**atalanta**  
Delivering the Global Harvest

## Product Specification Sheet

### BEEMSTER, CLASSIC

Item Number :	013007	Country of Origin :	HOLLAND
Pack Size :	1/24 LB	RW or EW weight :	RW
Brand on Box	BEEMSTER	Brand on Item:	BEEMSTER

ON Box	ON Product	UPC :	7 12243 03811 4	Date Code :	PACKING
X		GTIN :	08 7 12243 03811 6	Date Code Format :	YYMMDD
		EAN :		Date Code Location:	CASE/PRODUCT



### Product Properties

#### Ingredient/Product Statement :

PASTEURIZED COW'S MILK, SALT, CHEESE CULTURE, RENNET, ANNATTO (FOR COLOR).

Kosher (Y/N; Certification)	N	Rind (Y/N)	Y
Halal (Y/N)	N	Rind Edible (Y/N)	N
Organic (Y/N)	N	RBST Free (Y/N)	Y
Piece Count (Case)	1	Preservatives (Y/N)	N
Maturity/Aged	18 MONTHS	Lactose Free (Y/N)	Y
Milk Type	COW	GMO Free (Y/N)	Y
Rennet Type	ANIMAL	Casing (Y/N; Type)	N
Special Pre-Order (Y/N)	N	Pasteurized/Thermalized/Raw/Other	PASTEURIZED

#### Shelf Life:

Shelf Life from Production	12 MONTHS	Shelf Life if Frozen	N/A
Storage Temperature	33 - 40°	Shelf Life Defrosted	N/A

**Physical Properties:**

<b>Color</b>	DARK YELLOW
<b>Cheese Type</b>	GOUDA TYPE
<b>Aroma &amp; Flavor</b>	DEEP, NUTTY
<b>Texture</b>	FIRM BITE, CRUMBLY, NUTTY
<b>Appearance</b>	CLEAN, SMOOTH, DRY, YELLOW
<b>Body</b>	FLAT
<b>Shape</b>	WHEEL

**Chemical Analysis:**

		Specification	Range
<b>Moisture</b>	%	<b>31.8</b>	
<b>Fat in Dry Matter</b>	%	<b>51.3</b>	
<b>Milk Fat</b>	%		
<b>Salt</b>		<b>2</b>	
<b>Water Activity</b>		<b>0.87</b>	
<b>pH</b>			<b>5.25 – 5.6</b>
<b>Ash</b>			

**Microbiological Analysis:**

	Unit	Specification	Method
<b>Coliforms</b>	cfu/g		
<b>E. coli.</b>	cfu/g		
<b>Yeast</b>	cfu/g	<b>&lt;100</b>	
<b>Moulds</b>	cfu/g	<b>&lt;100</b>	
<b>Salmonella</b>	cfu/g	<b>ABSENT / 25g</b>	
<b>Listeria</b>	cfu/g	<b>ABSENT / 25g</b>	
<b>Enterobacteriaceae</b>	cfu/g		
<b>Staphylococcus aureus</b>	cfu/g		
<b>Staphylococcus coagulase</b>	cfu/g		

**Nutritionals**  
(\*Daily Value % Based on a 2,000 Calorie Diet)

**Serving Size:** \_\_\_\_\_ 100 g      **Serving Size:** \_\_\_\_\_ About 1 inch cube 28g (1oz)  
**Servings Per Container:** \_\_\_\_\_ varied      **Servings Per Container:** \_\_\_\_\_ varied

	Per Serving	DV%
Calories:	425	
Calories from Fat:	314	
Total Fat (g):	36	54
Saturated Fat (g):	25	125
<i>Trans</i> Fat (g):	0	
Cholesterol (mg):	89	29
Sodium (mg):	789	32
Total Carbohydrate (g):	0	0
Dietary Fiber (g):	0	0
Sugars (g):	0	
Protein (g):	29	
Vitamin A:	7	%
Vitamin C:	0	%
Calcium:	86	%
Iron:	0	%

	Per Serving	DV%
Calories:	119	
Calories from Fat:	88	
Total Fat (g):	10	15
Saturated Fat (g):	7	35
<i>Trans</i> Fat (g):	0	
Cholesterol (mg):	25	8
Sodium (mg):	221	9
Total Carbohydrate (g):	0	0
Dietary Fiber (g):	0	0
Sugars (g):	0	
Protein (g):	8	
Vitamin A:	2	%
Vitamin C:	0	%
Calcium:	24	%
Iron:	0	%

## Packaging

<b>Cases Per Pallet</b>	48	<b>Case Dimensions (in.)</b>	16"L x 16"W x 5"H
<b>Block &amp; Tier</b>	6 x 9	<b>Unit Dimensions (in.)</b>	"L x "W x "H
<b>Case Cube (ft^)</b>	0.7407	<b>Gross Weight (Avg.)</b>	25 lbs
<b>Packaging Type</b>	CARDBOARD	<b>Tare Weight</b>	1 lbs
		<b>Net Weight (Avg.)</b>	24 lbs

## Allergen List

The first column indicated the allergens that may be found in the product, either by addition or by cross contamination. The second column indicates the allergens that are present in other products that are run on the same equipment but at a different time, in the plant. The third column indicates whether any of those ingredients are present in the plant. **Each square is answered with a YES or NO and, when applicable, the name of an ingredient.**

Components	Present in Product	Present in Other Products Manufactured on the Same Line	Present in the Same Manufacturing Plant
<i>Peanuts (including peanut oil)</i>	No	No	No
<i>Tree Nuts</i>	No	No	No
<i>Sesame Seeds</i>	No	No	No
<i>Milk &amp; derivatives (Specify: <b>milk</b>, casein, whey, etc)</i>	<b>Yes; Milk</b>	<b>Yes; Milk</b>	<b>Yes; Milk</b>
<i>Eggs</i>	No	No	No
<i>Fish</i>	No	No	No
<i>Shellfish</i>	No	No	No
<i>Soy (excluding soy oil)</i>	No	No	No
<i>Wheat (Gluten)</i>	No	No	No
<i>Sulphites</i>	No	No	No
<i>Corn</i>	No	No	No
<i>Poppy Seeds</i>	No	No	No
<i>Sunflower Seeds</i>	No	No	No
<i>MSG (monosodium glutamate)</i>	No	No	No
<i>Tartrazine</i>	No	No	No

### Case Label



Supplier No.	S293
Manufacturer No.	F293
Audit / Expiry Date	FSSC22000/APR2017