

Parts Catalog



G14 Slicer

SLICING MACHINE

MODEL: G14

01-11-16N

Serial Number 900341 and Up

IMPORTANT!

TO EXPEDITE SHIPMENT OF PARTS, ALWAYS SPECIFY MODEL, REV,
PART NUMBER, AND SERIAL NUMBER OF SLICER.

GLOBE FOOD EQUIPMENT COMPANY

2215 East River Road

Dayton, Ohio 45439

Parts Department

Toll Free 1-800-745-6238 • Fax (937) 290-0585

E-Mail: info@globefoodequip.com

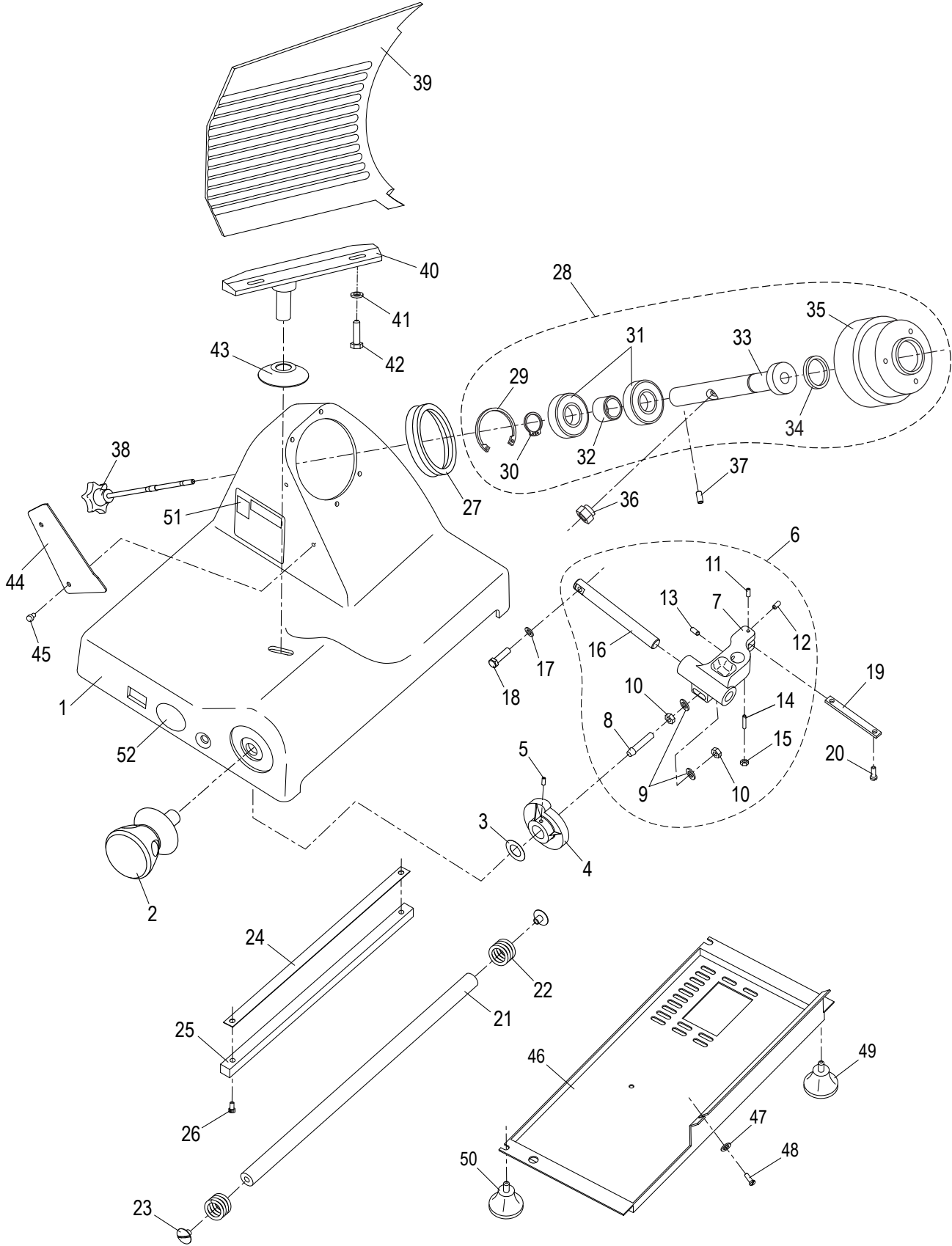
Website: www.globefoodequip.com

Not for resale

TABLE OF CONTENTS

Serial Number 900341 and Up	Page
Base Components	1 - 2
Chute Components	3
Knife & Sharpener Components	4
Electrical Components	5
Wiring Diagram	6

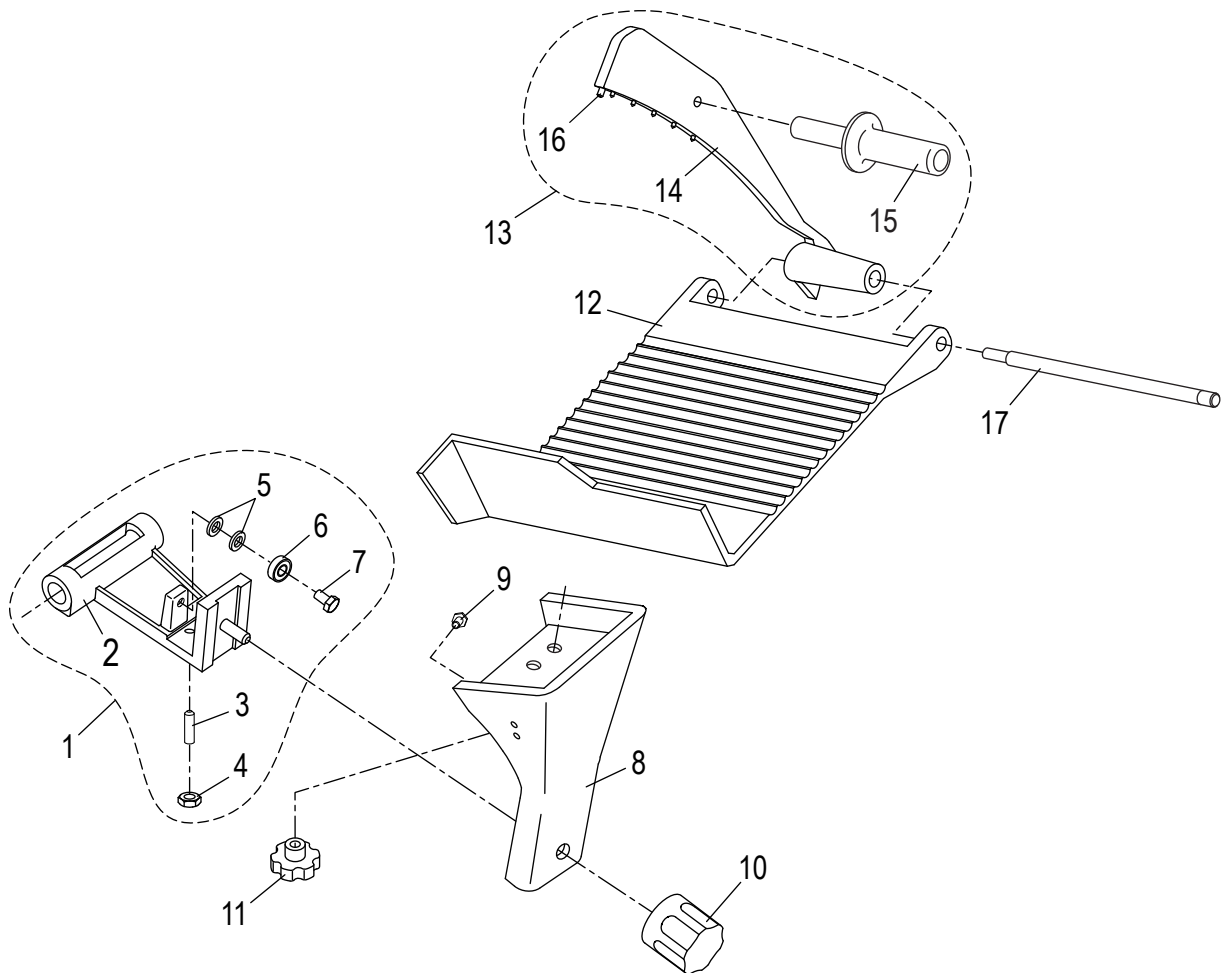
G14 BASE COMPONENTS



G14 BASE PARTS LIST

Item	Description	Qty	Part Number	Hardware
1	Slicer Base	1	-	
2	Table Adjustment Knob	1	M00209	
3	Wave Washer	1	M003	
4	Table Adjustment Cam	1	M004	
5	Table Adjustment Cam Set Screw	2	H00181	
6	Table Slide Assembly (Items 8-17)	1	M305	
7	Table Slide	1	-	
8	Stud, Cam Actuator	1	M013	
9	Flat Washer	2	H00191	
10	Hex Nut, Table Slide Bottom	2	H00192	
11	Set Screw, Table Slide Top	1	H00182	
12	Set Screw, Table Slide End	1	H00185	
13	Set Screw, Table Slide Side	2	H00186	
14	Set Screw, Table Slide Bottom	1	H00188	
15	Hex Nut , Table Slide Bottom	1	H00028	
16	Table Slide Rod	1	MR36	
17	Slide Rod Flat Washer	2	H00191	
18	Slide Rod Screw, Hex Head	2	H00116	
19	Table Slide Plate	1	M016	
20	Slide Plate Screw	2	H00061	
21	Carriage Slide Rod	1	M00242	
22	Carriage Spring	2	M00243	
23	Slide Rod Screw	2	ME25	
24	Wear Strip, Slide Bar	1	ME31/1	
25	Slide Bar, Square	1	M00244	
26	Slide Bar Screw	2	H00056	
27	Motor Hub Seal	1	M00245	
28	Knife Hub Assembly (Items 30-36)	1	M0246	
29	Retaining Ring, Internal	1	H00193	
30	Retaining Ring, External	1	H00195	
31	Bearing	2	M020	
32	Spacer, Knife Pulley	1	M00249	
33	Shaft, Knife Hub	1	M00248	
34	Oil Seal, Hub	1	MS12/7	
35	Pulley, Knife Hub	1	M00247	
36	Microswitch Mounting Bolt	1	MCR61	
37	Knife Shaft Set Screw	1	H00184	
38	Knife Cover Release Knob	1	M00250	
39	Table	1	M00251	
40	Table Support	1	M00252	
41	Table Support Washer	2	H00191	
42	Table Support Screw	2	H00196	
43	Hole Cover, Base	1	M00228	
44	Knife Wiper	1	MS22	
45	Thumb Screw, Knife Wiper	2	MCC23	
46	Bottom Cover	1	MS64	
47	Cover Washer	1	H00063	
48	Cover Mounting Screw	1	H00061	
49	Back Foot	2	M115	
50	Front Foot	2	M00229	
51	Warning label	1	M91022	
52	Label, Globe Logo	1	M91021	

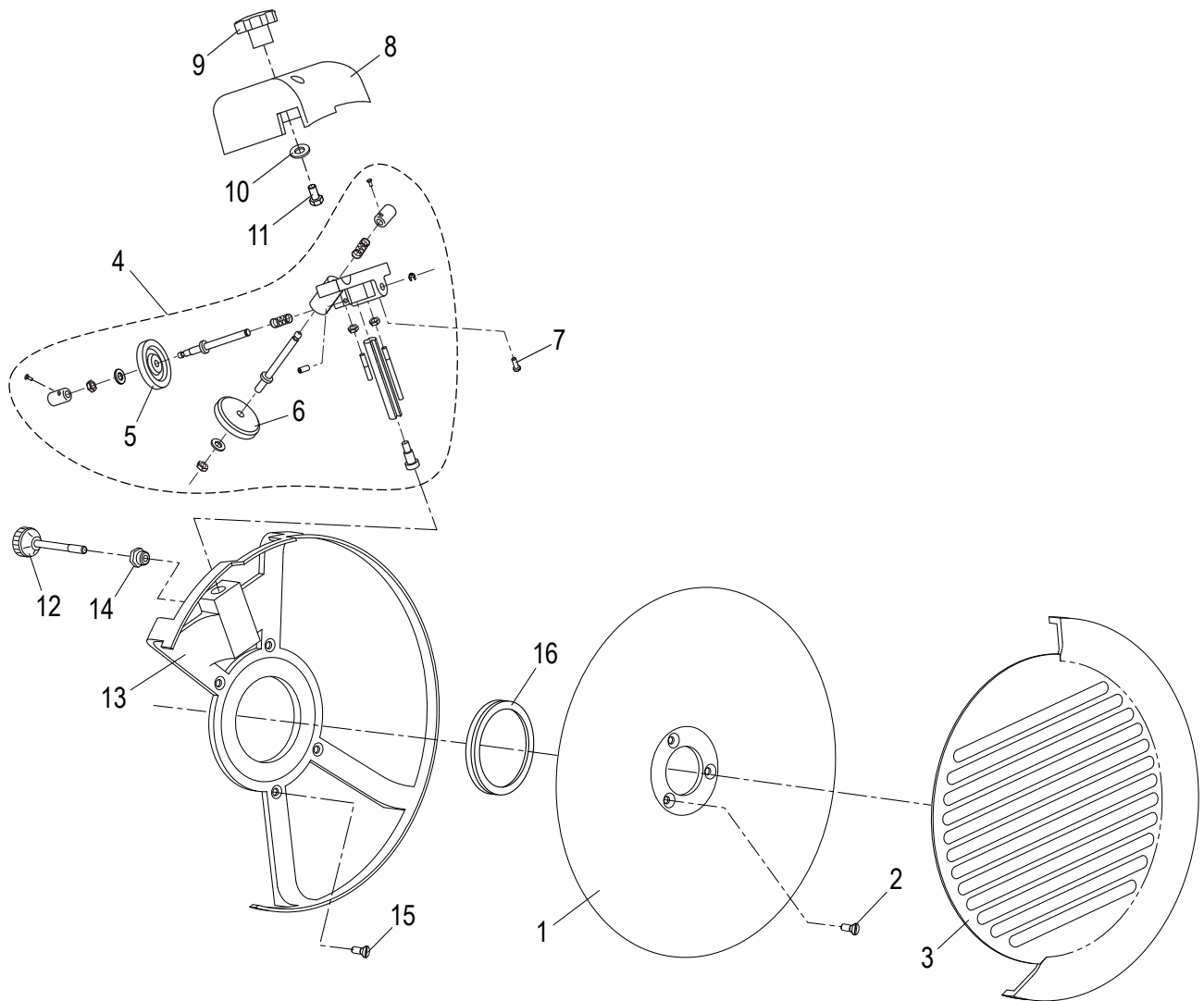
G14 CHUTE COMPONENTS



Item	Description	Qty	Part Number	Hardware
1	Chute Slide Assy (Item 2 - 9)	1	M00290	
2	Chute Slide	1	-	
3	Brass Stud	1	MS30	
4	Stud Nut	1	H00192	
5	Bearing Washer	2	H00191	
6	Bearing	1	M056	
7	Bearing Screw	1	H00117	
8	Chute Support	1	M00293	
9	Chute Support Handle Screw	2	H00156	
10	Chute Support Knob	1	M00268	
11	Chute Release Knob	1	M00254	
12	Chute	1	M00294	
			*M01068	
13	End Weight Assembly (Item 14 - 16)	1	M00391	
			*M01069	
14	End Weight	1	-	
15	End Weight Handle	1	M00261	
16	End Weight Bumper	1	MC39	
			*M01070	
17	End Weight Rod	1	M00283	
			*M01071	

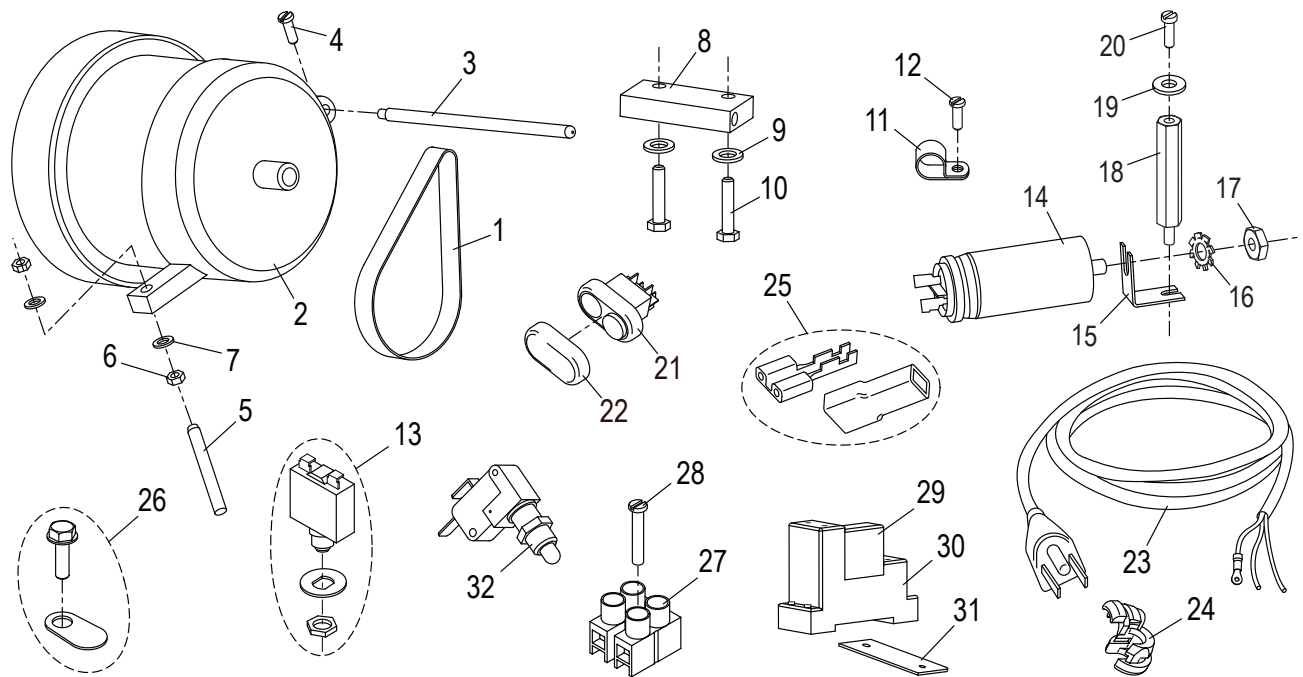
* Use after Serial Number 901213

G14 KNIFE AND SHARPENER COMPONENTS



Item	Description	Qty	Part Number	Hardware
1	Knife	1	MG13	
2	Screw, Knife Mounting	3	H00201	56-A
3	Knife Cover	1	M00332	
4	Knife Sharpener Assembly	1	MC17A	
5	Deburring Stone	1	M092	
6	Sharpening Stone	1	MCC17	
7	Sharpener Cover Screw	2	H00187	M5 x 0.8 x 15mm
8	Sharpener Cover	1	M074	
9	Sharpener Cover Knob	1	M075	
10	Flat Washer	1	M035	
11	Screw, Sharpener Cover Knob	1	H00197	M6 x 16mm - Zinc
12	Sharpener Release Knob	1	M096	
13	Knife Rim Guard	1	MS14/1	
14	Insert, Knife Rim Guard	1	M045	
15	Screw, Rim Guard	4	H00435	
16	V Ring, Knife Seal VA 90	1	MS77/5	

G14 ELECTRICAL COMPONENTS



Item	Description	Qty	Part Number	Hardware
1	Drive Belt	1	MS51	
2	Knife Motor	1	MS43/1	
3	Post, Motor Pivot	1	MB52/1	
4	Screw	1	H00189	
5	Threaded Rod	1	M033	
6	Hex Nut	2	M034	
7	Flat Washer	2	M035	
8	Motor Mounting Block	1	M00356	
9	Mounting Block Washer	1	H00063	
10	Mounting Block Screw	2	H00357	
11	Cable Clamp	1	M037	
12	Screw, Cable Clamp	1	H00061	
13	Switch, Motor Reset	1	MK7004	
14	Capacitor, 16 μ f	1	MB54/3	
15	Bracket, Capacitor Mounting	1	-	
16	Lock Washer	1	H00335	
17	Hex Nut	1	H00192	
18	Standoff, Cover Spacer	1	M00361	
19	Cover Washer	1	M035	
20	Cover Mounting Screw	1	H00061	
21	Power Switch	1	MCR69	
22	Cover, Power Switch	1	MCR59	
23	Power Cord & Plug	1	M110	
24	Strain Relief	1	M111	
25	Terminal & Insulator Set	15	M00233	
26	Ground Screw/Marking Tab Set	1	M00334	
27	Terminal Block	1	MB80/2	
28	Terminal Block Mounting Screw	1	H00203	
29	Relay	1	MCR75	
30	Relay Socket	1	MCR76	
31	Relay Mounting Plate	1	M00360	
32	Hub Assembly Microswitch	1	M026	

WIRING DIAGRAM - 115V, 50/60/Hz, 1 PH

