

BUNN®

JDF-2S *Silver Series®*



ILLUSTRATED PARTS CATALOG

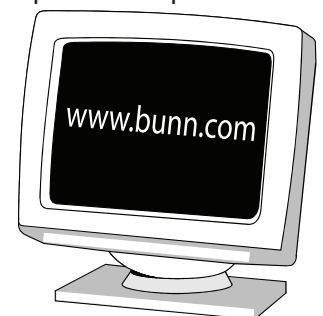
Designs, materials, weights, specifications, and dimensions for equipment or replacement parts are subject to change without notice.

BUNN-O-MATIC CORPORATION

POST OFFICE BOX 3227

SPRINGFIELD, ILLINOIS 62708-3227

PHONE: (217) 529-6601 FAX: (217) 529-6644



BUNN-O-MATIC COMMERCIAL PRODUCT WARRANTY

Bunn-O-Matic Corp. ("BUNN") warrants equipment manufactured by it as follows:

- 1) Airpots, thermal carafes, decanters, GPR servers, iced tea/coffee dispensers, MCR/MCP/MCA single cup brewers, thermal servers and ThermoFresh® servers (mechanical and digital) 1 year parts and 1 year labor.
- 2) All other equipment - 2 years parts and 1 year labor plus added warranties as specified below:
 - a) Electronic circuit and/or control boards - parts and labor for 3 years.
 - b) Compressors on refrigeration equipment - 5 years parts and 1 year labor.
 - c) Grinding burrs on coffee grinding equipment to grind coffee to meet original factory screen sieve analysis - parts and labor for 4 years or 40,000 pounds of coffee, whichever comes first.

These warranty periods run from the date of installation BUNN warrants that the equipment manufactured by it will be commercially free of defects in material and workmanship existing at the time of manufacture and appearing within the applicable warranty period. This warranty does not apply to any equipment, component or part that was not manufactured by BUNN or that, in BUNN's judgment, has been affected by misuse, neglect, alteration, improper installation or operation, improper maintenance or repair, non periodic cleaning and descaling, equipment failures related to poor water quality, damage or casualty. In addition, the warranty does not apply to replacement of items subject to normal use including but not limited to user replaceable parts such as seals and gaskets. This warranty is conditioned on the Buyer 1) giving BUNN prompt notice of any claim to be made under this warranty by telephone at (217) 529-6601 or by writing to Post Office Box 3227, Springfield, Illinois 62708-3227; 2) if requested by BUNN, shipping the defective equipment prepaid to an authorized BUNN service location; and 3) receiving prior authorization from BUNN that the defective equipment is under warranty.

THE FOREGOING WARRANTY IS EXCLUSIVE AND IS IN LIEU OF ANY OTHER WARRANTY, WRITTEN OR ORAL, EXPRESS OR IMPLIED, INCLUDING, BUT NOT LIMITED TO, ANY IMPLIED WARRANTY OF EITHER MERCHANTABILITY OR FITNESS FOR A PARTICULAR PURPOSE. The agents, dealers or employees of BUNN are not authorized to make modifications to this warranty or to make additional warranties that are binding on BUNN. Accordingly, statements by such individuals, whether oral or written, do not constitute warranties and should not be relied upon.

If BUNN determines in its sole discretion that the equipment does not conform to the warranty, BUNN, at its exclusive option while the equipment is under warranty, shall either 1) provide at no charge replacement parts and/or labor (during the applicable parts and labor warranty periods specified above) to repair the defective components, provided that this repair is done by a BUNN Authorized Service Representative; or 2) shall replace the equipment or refund the purchase price for the equipment.

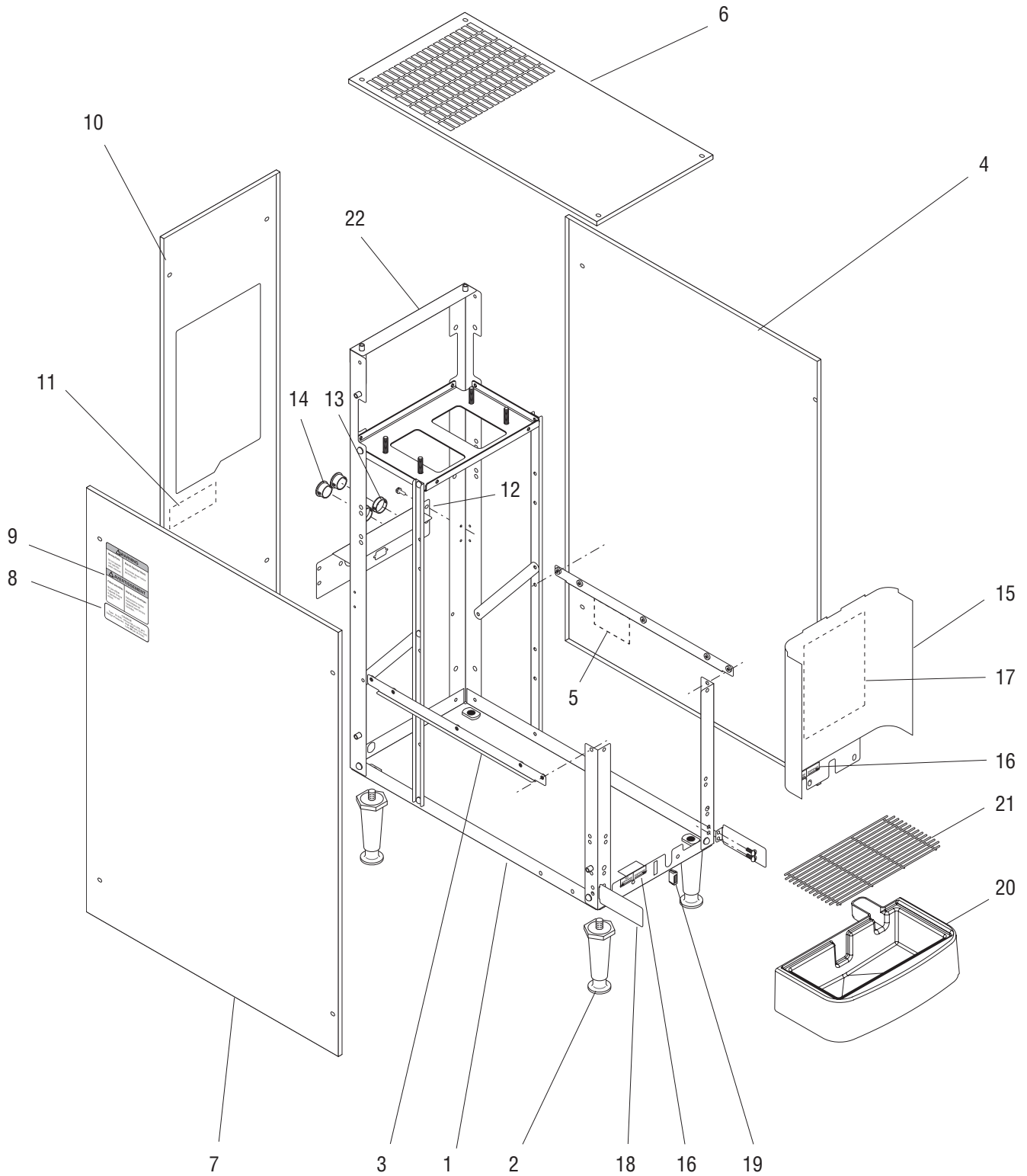
THE BUYER'S REMEDY AGAINST BUNN FOR THE BREACH OF ANY OBLIGATION ARISING OUT OF THE SALE OF THIS EQUIPMENT, WHETHER DERIVED FROM WARRANTY OR OTHERWISE, SHALL BE LIMITED, AT BUNN'S SOLE OPTION AS SPECIFIED HEREIN, TO REPAIR, REPLACEMENT OR REFUND.

In no event shall BUNN be liable for any other damage or loss, including, but not limited to, lost profits, lost sales, loss of use of equipment, claims of Buyer's customers, cost of capital, cost of down time, cost of substitute equipment, facilities or services, or any other special, incidental or consequential damages.

392, A Partner You Can Count On, Air Infusion, AutoPOD, AXIOM, BrewLOGIC, BrewMETER, Brew Better Not Bitter, BrewWISE, BrewWIZARD, BUNN Espresso, BUNN Family Gourmet, BUNN Gourmet, BUNN Pour-O-Matic, BUNN, BUNN with the stylized red line, BUNNlink, Bunn-O-Matic, Bunn-O-Matic, BUNNserve, BUNNSERVE with the stylized wrench design, Cool Froth, DBC, Dr. Brew stylized Dr. design, Dual, Easy Pour, EasyClear, EasyGard, FlavorGard, Gourmet Ice, Gourmet Juice, High Intensity, iMIX, Infusion Series, Intellisteam, My Café, Phase Brew, PowerLogic, Quality Beverage Equipment Worldwide, Respect Earth, Respect Earth with the stylized leaf and coffee cherry design, Safety-Fresh, savemycoffee.com, Scale-Pro, Silver Series, Single, Smart Funnel, Smart Hopper, SmartWAVE, Soft Heat, SplashGard, The Mark of Quality in Beverage Equipment Worldwide, ThermoFresh, Titan, trifacta, TRIFECTA (stylized logo), Velocity Brew, Air Brew, Beverage Bar Creator, Beverage Profit Calculator, Brew better, not bitter., Build-A-Drink, BUNNsource, Coffee At Its Best, Cyclonic Heating System, Daypart, Digital Brewer Control, Element, Milk Texturing Fusion, Nothing Brews Like a BUNN, Picture Prompted Cleaning, Pouring Profits, Signature Series, Sure Tamp, Tea At Its Best, The Horizontal Red Line, Ultra are either trademarks or registered trademarks of Bunn-O-Matic Corporation. The commercial trifacta® brewer housing configuration is a trademark of Bunn-O-Matic Corporation.

TABLE OF CONTENTS

Main Frame & Covers.....	4
Upper Cabinet & Panels.....	8
Refrigeration Components.....	12,14,16
Compressor Components.....	18,20
Fan Assembly	22
Water Tank Assy	24,28
Circulation Pump & Lines.....	32,34
Product Coil & Lines	36,38
Dispense Platform Assy	40
Dispense Valve Assy.....	42
Plain Water Manifold	44
Door Assy - Unlited	46
Door Assy - Lited w/Mechanical Switches.....	48
Door Assy - Lited w/Membrane Switches.....	50
Electrical Components.....	54
Refillable Container Assy.....	58
Numerical Index	60



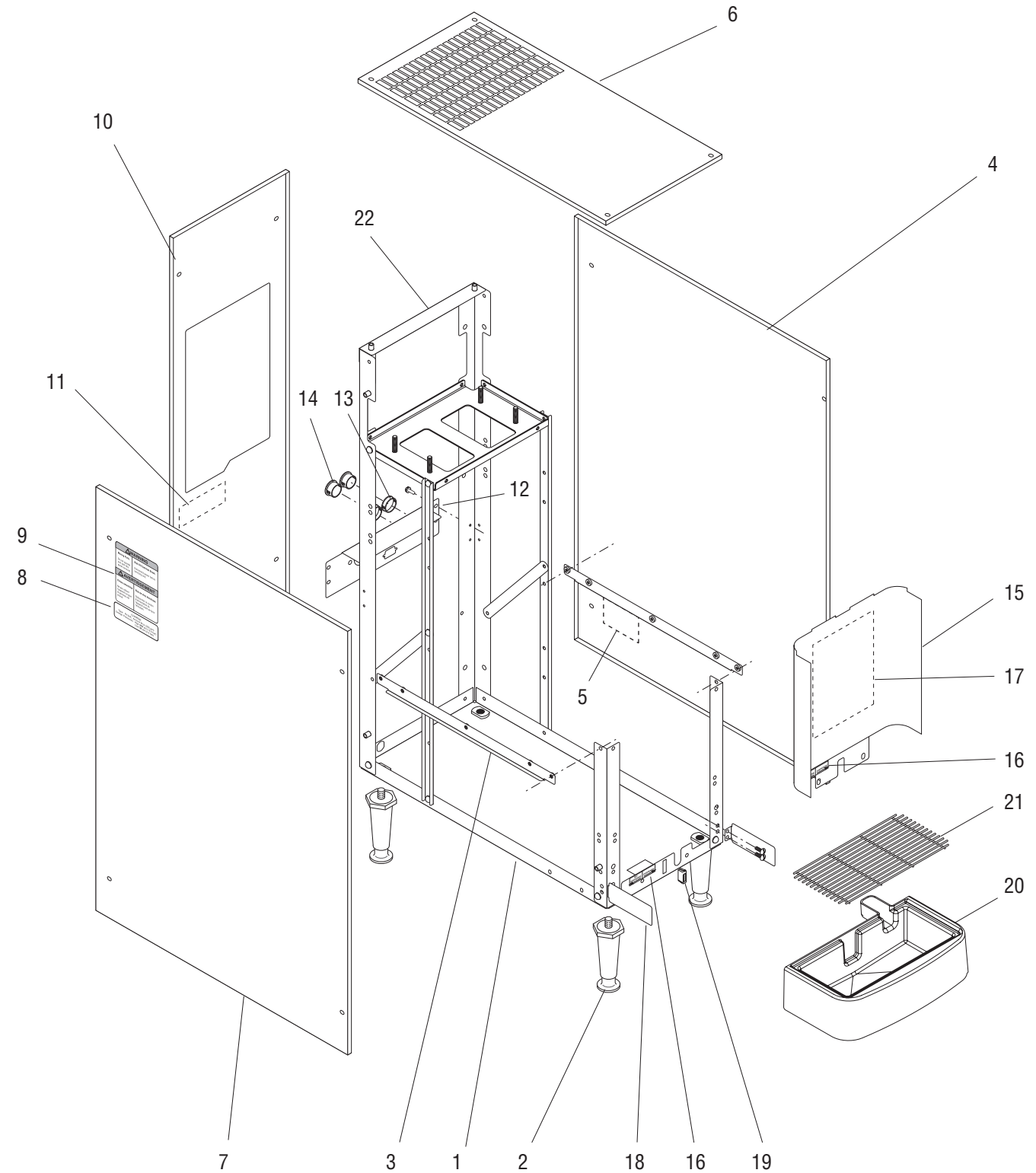
MAIN FRAME & COVERS

ITEM	PART NO.	QTY.	DESCRIPTION
1	38606.0000*	1	Base Frame (Models with Louvered Panels)
	45706.0001 *	1	Base Frame (Models w/o Louvered Panels)
	45706.0002*	1	Base Frame (Models w/o Louvered Panels)(Salt Air Resistent)
	45706.0003*	1	Base Frame (Late Models w/ Cubigel Compressor)
2	26528.0000	4	Leg
	03996.0000	4	Pad, Non-skid
3	38654.0000*	1	Bracket, Side
	38654.0001 *	1	Bracket, Side (Salt Air Resistent)
	02308.0000	4	Screw, Pan Head #8-32 x .38"
4	38717.1001	1	Panel w/Decals, Right (Includes item 5) (Models with Louvered Panels)
	39491.1002	1	Panel w/Decals, Right (Includes item 5)(Models without Louvered Panels)
	39491.0004	1	Panel, Right (Models without Louvered Panels)(Salt Air Resistent)
	02331.0001	4	Screw, Truss Head, Blk #10-32 x .38"
	01512.0000	1	Lockwasher, Ext.-tooth #10
5	00986.7000	1	Decal, Warning - Electrical
6	38719.1001	1	Panel, Top
	38719.0004	1	Panel, Top (Salt Air Resistent)
	02331.0001	4	Screw, Truss Head, Blk #10-32 x .38"
	01512.0000	1	Lockwasher, Ext.-tooth #10
7	38716.1001	1	Panel w/Decals, Left (Includes items 8 & 9) (Models with Louvered Panels)
	39491.1003	1	Panel w/Decals, Left (Includes items 8 & 9)(Models without Louvered Panels)
	39491.0004	1	Panel, Left (Models without Louvered Panels)(Salt Air Resistent)
	02331.0001	4	Screw, Truss Head, Blk #10-32 x .38"
	01512.0000	1	Lockwasher, Ext.-tooth #10
8	33461.0001	1	Decal, Refrigerant Charge
9	27442.7000	2	Decal, Warning - Moving Parts
10	38718.1003	1	Panel w/Decals, Rear (Includes item 11)(Models with Velcro mounted Air Filter)
	42478.1001	1	Panel w/Decals, Rear (Includes item 11)(Models with Frame mounted Air Filter)
	42478.0003	1	Panel, Rear (Models with Frame mounted Air Filter)(Salt Air Resistent)
	02331.0001	4	Screw, Truss Head, Blk #10-32 x .38"
	01512.0000	1	Lockwasher, Ext.-tooth #10
11	00656.0001	1	Decal, Comply To Plumbing Code
12	38615.0000*	1	Bracket
	38615.0001 *	1	Bracket (Models with Dual Dispense option)
	02335.0001	4	Screw, Hex Crimptite #8 x .38"
13	27354.0000	2	Bushing
14	00668.0000	2	Plug
15	38661.0000	1	Panel, Splash (Also order items 16 & 17)
	02308.0000	2	Screw, Pan Head #8-32 x .38"
16	38950.0000	2	Decal, Dispense/No Dispense
17	44745.0000	1	Schematic, Electrical

(Continued)

* Indicates the part number listed is for reference only. See DESCRIPTION for possible service replacement.

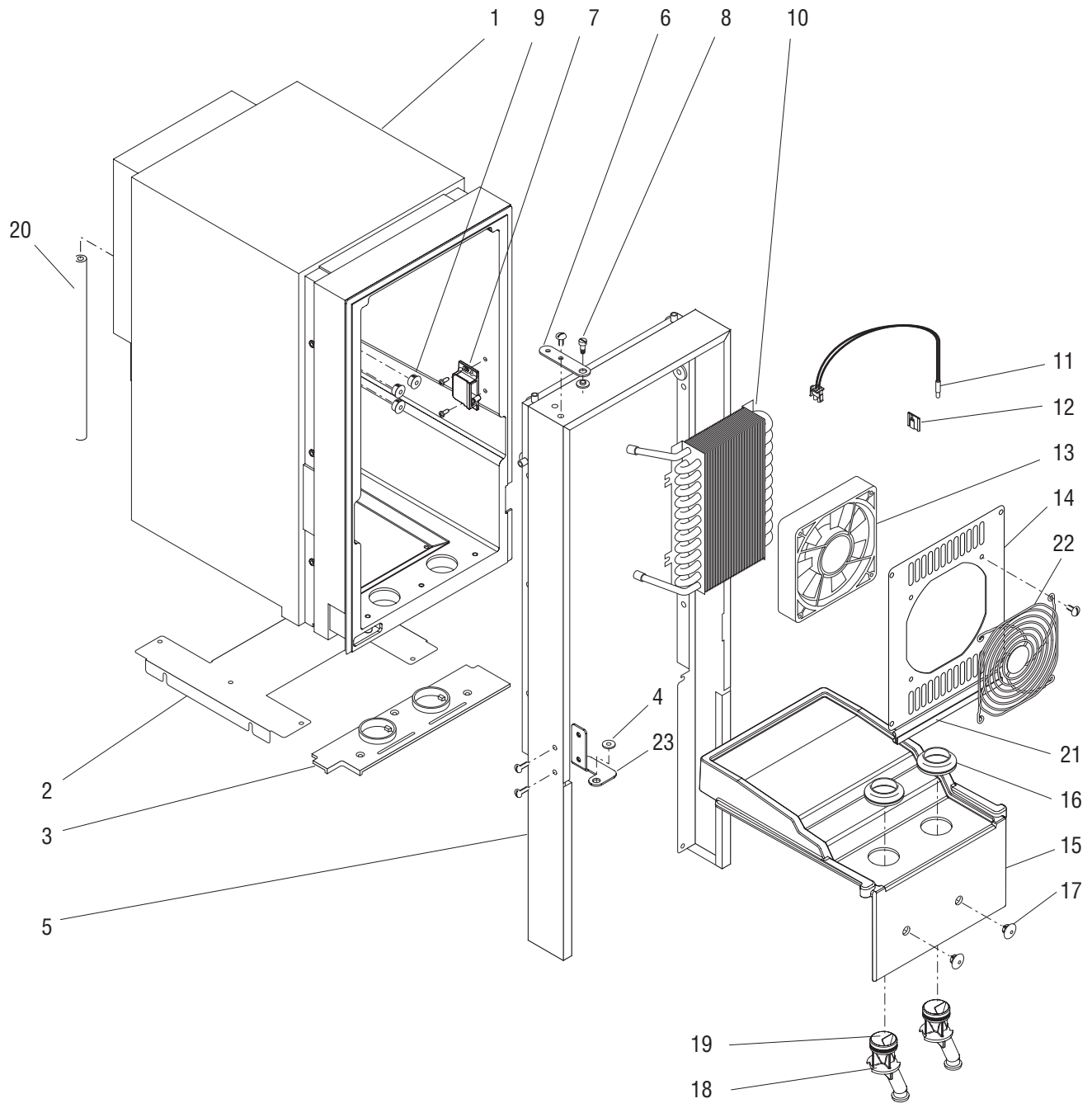
(Continued)



MAIN FRAME & COVERS

ITEM	PART NO.	QTY.	DESCRIPTION
18	38617.1001	2	Bracket
	02308.0000	4	Screw, Pan Head #8-32 x .38"
19	21436.0000	1	Catch, Magnetic
20	38765.1000	1	Drip Tray Assy (Includes Strike Plate and item 21)
	44015.1000	1	Drip Tray Assy, Extended (Optional Equipment)
21	26801.0000	1	Grate, Drip Tray
22	38655.0001	1	Bracket, Top Rear
	38655.0002	1	Bracket, Top Rear (Salt Air Resistent)

* Indicates the part number listed is for reference only. See DESCRIPTION for possible service replacement.



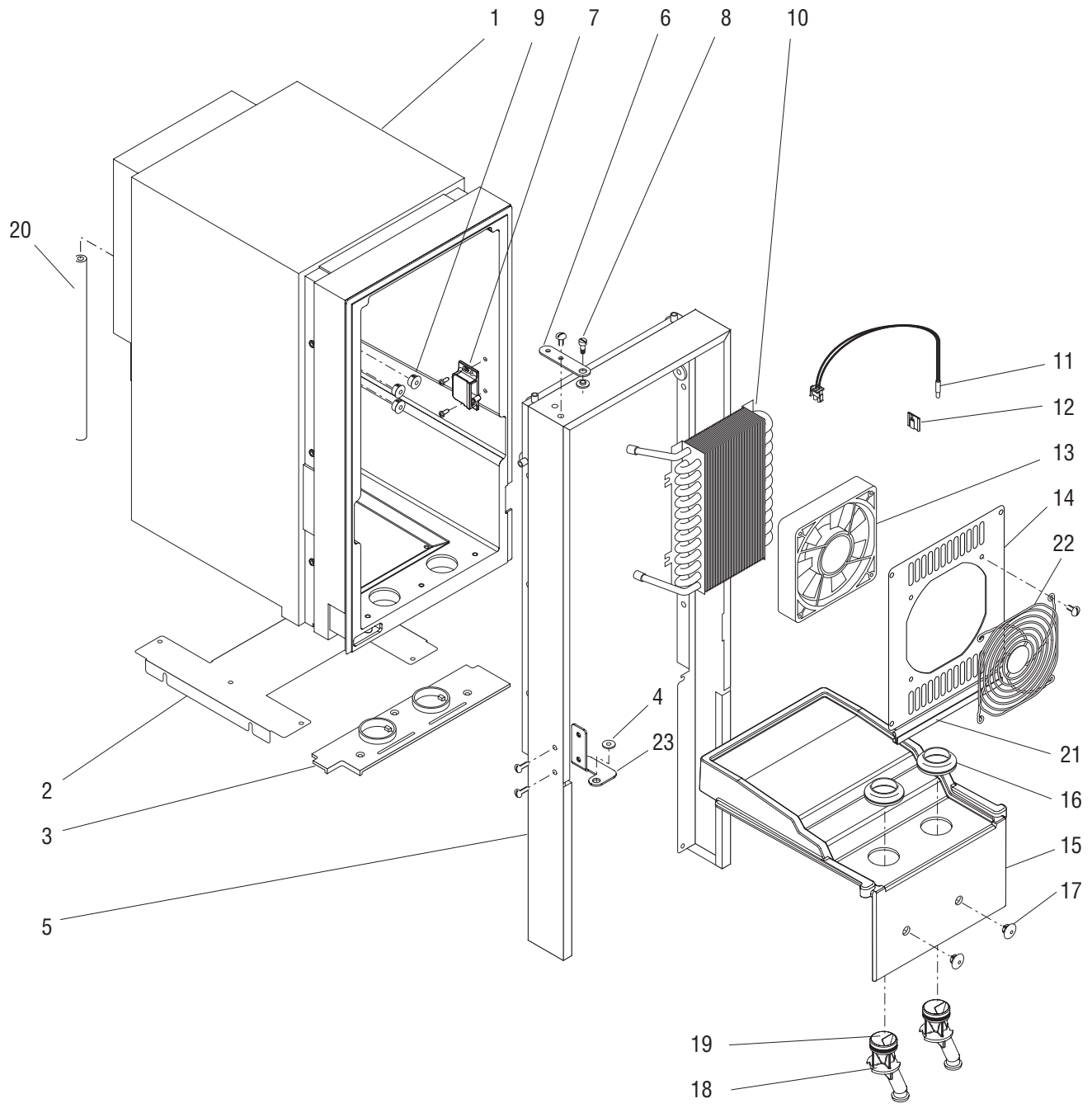
UPPER CABINET & PANELS

ITEM	PART NO.	QTY.	DESCRIPTION
1	38857.1000	1	Cabinet Assy
	24544.0000	6	Screw, Pan Head #8-18
2	34738.0001*	1	Plate, Cabinet Mounting
	34738.0002*	1	Plate, Cabinet Mounting (Salt Air Resistent)
	02308.0000	4	Screw, Pan Head #8-32 x .38"
3	34784.0000	1	Plate, Bottom Closure
	01359.0000	3	Screw, Flat Head #8-32 x .38"
4	34362.0002	1	Bushing, Hinge
5	34790.0001	1	Wrap (Early Models)
	34790.0002	1	Wrap (Late Models with bolt on door hinge)
	24544.0000	6	Screw, Pan Head #8-1
	02308.0000	4	Screw, Pan Head #8-32 x .38"
6	34785.0001	1	Bracket, Hinge
	02331.0001	2	Screw, Truss Head, Blk #10-32 x .38"
	43951.0000	2	Washer
7	34666.0001	1	Catch, Door Latch
	01388.0000	2	Screw, Truss Head #6 x .75"
8	34741.0000	1	Screw, Shoulder
9	00669.0002	3	Plug
10	34419.0001	1	Coil, Water
	34419.0003	1	Coil, Water (Salt Air Resistent)
	24544.0000	4	Screw, Pan Head #8-18
11	43694.0000	1	Sensor Assy, Temperature
12	33669.0000	1	Clip, Adhesive Back
13	33297.0000	1	Fan Assy.
	38616.0000	2	Screw, Hex Head #10-24
14	34421.0001	1	Cover, Fan
	34421.0004	1	Cover, Fan (Salt Air Resistent)
	24544.0000	4	Screw, Pan Head #8-18
15	34422.0003	1	Shelf, Product
16	32461.0000	2	Gasket, Drip
17	27394.0000	2	Plug
18	35930.0000	2	Nozzle
	49819.1000	2	Nozzle, Quick Stop, White (Optional)(Includes item 19)
	49819.1001	2	Nozzle, Quick Stop, Black (Optional)(Includes item 19)
19	32848.0000	4	O-ring (Also order item 24)
20	11707.0044*	1	Tube, Silicone .25"ID x 9.0" (Order item 25)

(Continued)

* Indicates the part number listed is for reference only. See DESCRIPTION for possible service replacement.

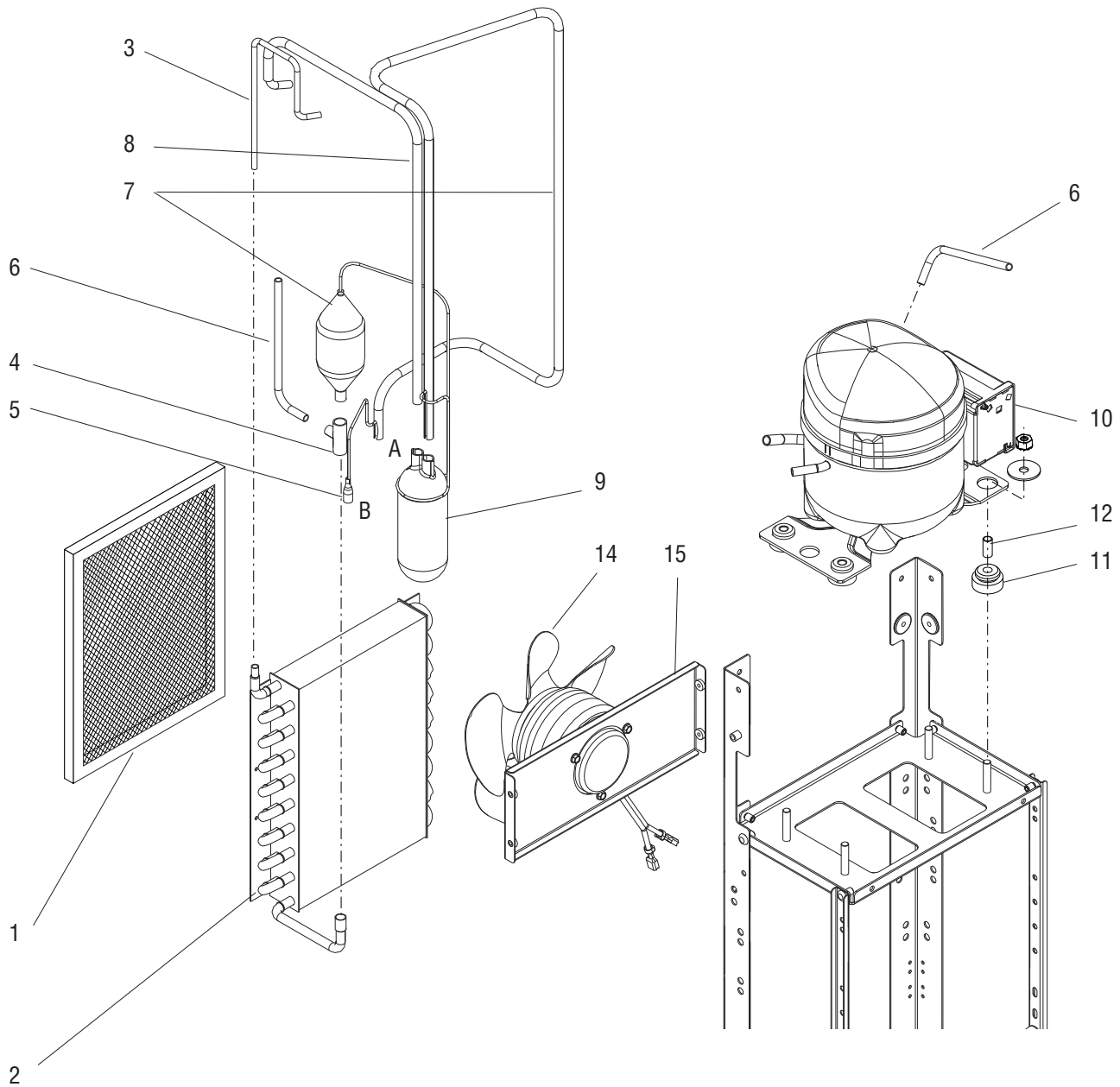
(Continued)



UPPER CABINET & PANELS

ITEM	PART NO.	QTY.	DESCRIPTION
21	39086.0000*	1	Seal, Fan Cover (Late Models)
22	34010.0001	1	Guard, Fan
	34010.0002	1	Guard, Fan (Salt Air Resistent)
	38616.0000	2	Screw, Hex Head #10-24
23	41385.0000	1	Bracket (Late Models with bolt on door hinge)
	02308.0000	2	Screw, Pan Head #8-32 x .38"
24	M2550.0001	-	Lubrifilm 1.0oz (Use when assembling item 19)
25	11707.1000	-	Tube, Silicone .25"ID x 12.0" (Use as required)
26	49819.1002	-	Nozzle Kit, Quick Stop, White (Set of 2)
	49819.1003	-	Nozzle Kit, Quick Stop, Black (Set of 2)

* Indicates the part number listed is for reference only. See DESCRIPTION for possible service replacement.



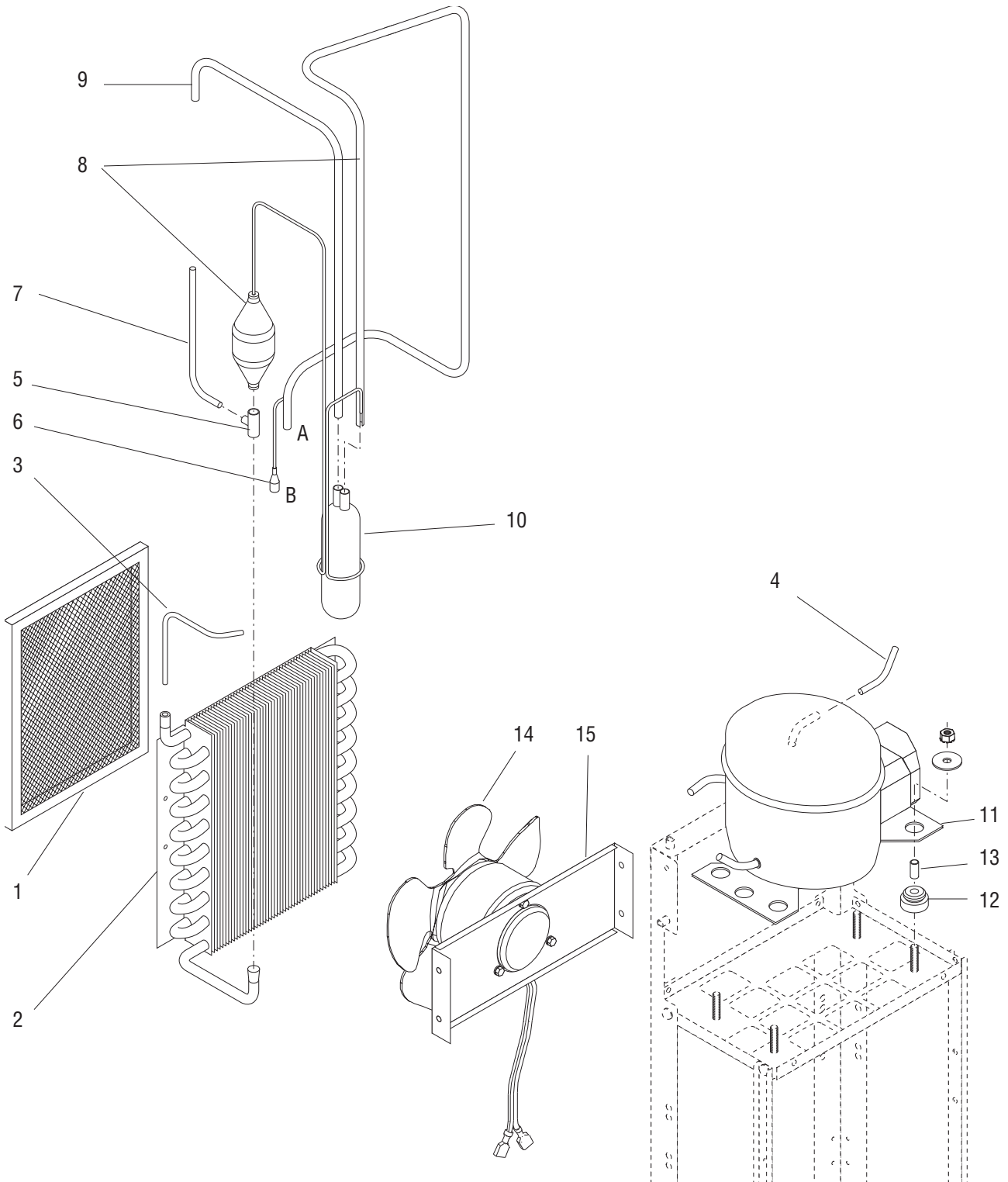
P4362.65

NOTE: Letters appearing within this illustration correspond to matching connections in other illustrations.

REFRIGERATION COMPONENTS (LATE MODELS w/ CUBIGEL COMPRESSOR)

ITEM	PART NO.	QTY.	DESCRIPTION
1	35164.1001	1	Air Filter Assy (Includes item 18)
2	29951.0002	1	Condenser
	02335.0001	4	Screw, Crimptite #8 x .38"
3	51951.0000	1	Tube (Requires brazing to install)
4	00396.0002	1	Tee (Requires brazing to install)
5	35178.0000	1	Adapter (Requires brazing to install)
6	38937.0000	2	Tube (Requires brazing to install)
7	35175.1002	1	Filter Dryer Assy (Requires brazing to install)
8	51997.0000	1	Tube (Requires brazing to install)
9	32776.0000	1	Accumulator
10	-----	1	Compressor (See COMPRESSOR COMPONENTS)
	34529.0000*	4	Washer
	23700.0000	4	Nut .25"-20
11	-----	4	Grommet
12	-----	4	Sleeve
			} Order item 15
13	-----	1	Fan Assy (See FAN ASSEMBLY)
	27243.0000	3	Screw #8-36 x .437"
14	34418.0001*	1	Bracket
	02308.0000	4	Screw, Pan Head #8-32 x .38"
15	28567.0000	1	Mounting Kit (Includes four each of items 11 & 12)
16	M2546.1000	-	Tape, Tube Insulating (Use as required)
17	M2336.1000	-	Insulation, Tube 25/50 - 0.25"ID x .19" wall x 6.0 Ft (Use as required)
18	12467.1002	-	Velcro, Loop 3.5" (4 pieces)
	12468.1002	-	Velcro, Hook 3.5" (4 pieces)
			} Not Illustrated

* Indicates the part number listed is for reference only. See DESCRIPTION for possible service replacement.



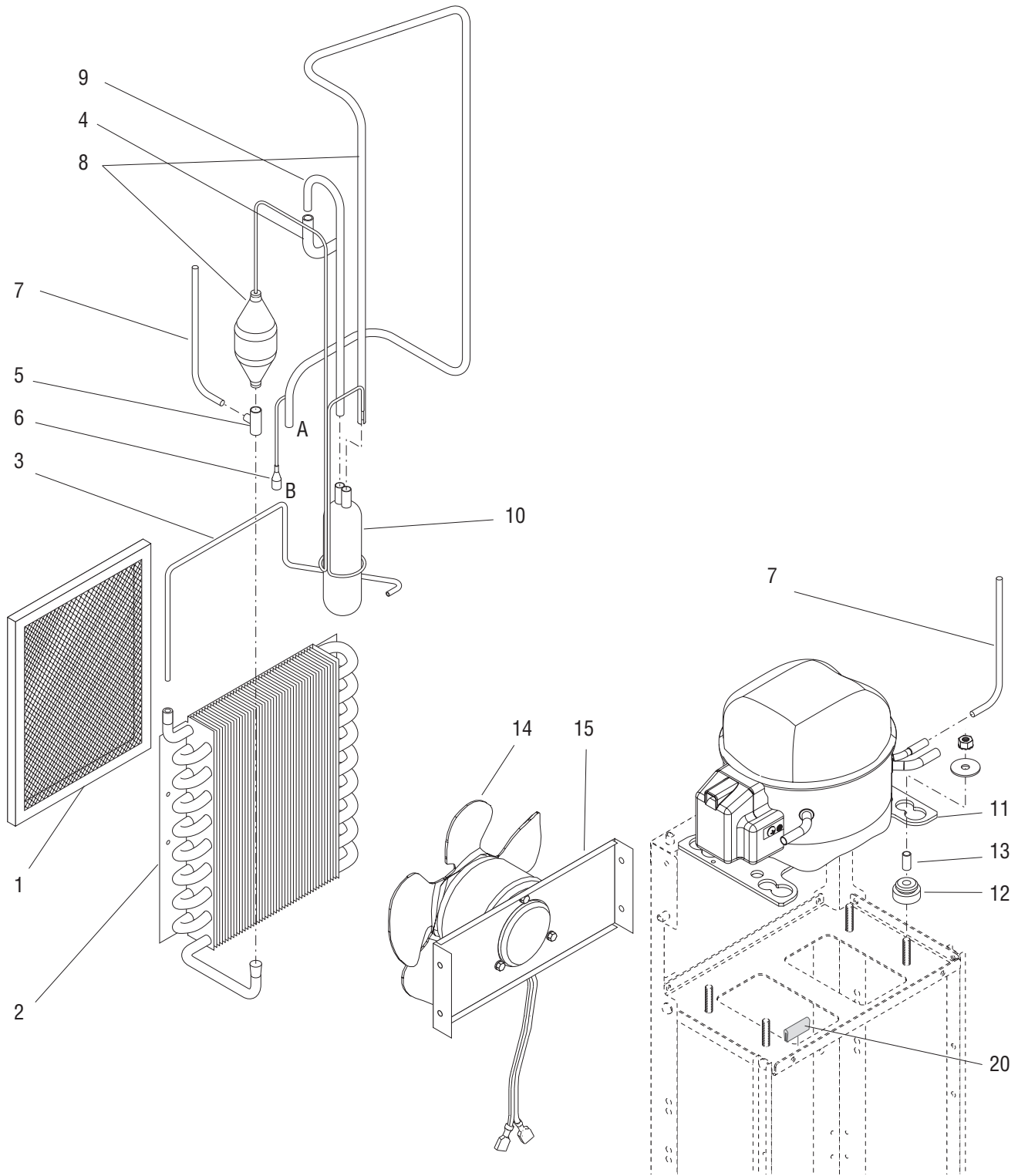
P3615.65

NOTE: Letters appearing within this illustration correspond to matching connections in other illustrations.

REFRIGERATION COMPONENTS (EARLY MODELS w/ CUBIGEL COMPRESSOR)

ITEM	PART NO.	QTY.	DESCRIPTION
1	35164.1001	1	Air Filter Assy (Includes item 19)
2	29951.0002	1	Condenser
	02335.0001	4	Screw, Crimptite #8 x .38"
3	38921.0001	1	Tube (Requires brazing to install)
4	38934.0001	1	Tube (Requires brazing to install)
5	00396.0002	1	Tee (Requires brazing to install)
6	35178.0000	1	Adapter (Requires brazing to install)
7	38937.0000	1	Tube (Requires brazing to install)
8	35175.1002	1	Filter Dryer Assy (Requires brazing to install)
9	38922.0001	1	Tube (Requires brazing to install)
10	32776.0000	1	Accumulator
11	-----	1	Compressor (See COMPRESSOR COMPONENTS)
	34529.0000*	4	Washer
	00901.0000	4	Nut .25"-20
12	-----	4	Grommet
13	-----	4	Sleeve
			} Order item 16
14	-----	1	Fan Assy (See FAN ASSEMBLY)
	27243.0000	3	Screw #8-36 x .437"
15	34418.0001*	1	Bracket
	02308.0000	4	Screw, Pan Head #8-32 x .38"
16	28567.0000	1	Mounting Kit (Includes four each of items 12 & 13)
17	M2546.1000	-	Tape, Tube Insulating (Use as required)
18	M2336.1000	-	Insulation, Tube 25/50 - 0.25"ID x .19" wall x 6.0 Ft (Use as required)
19	12467.1002	-	Velcro, Loop 3.5" (4 pieces)
	12468.1002	-	Velcro, Hook 3.5" (4 pieces)
			} Not Illustrated

* Indicates the part number listed is for reference only. See DESCRIPTION for possible service replacement.



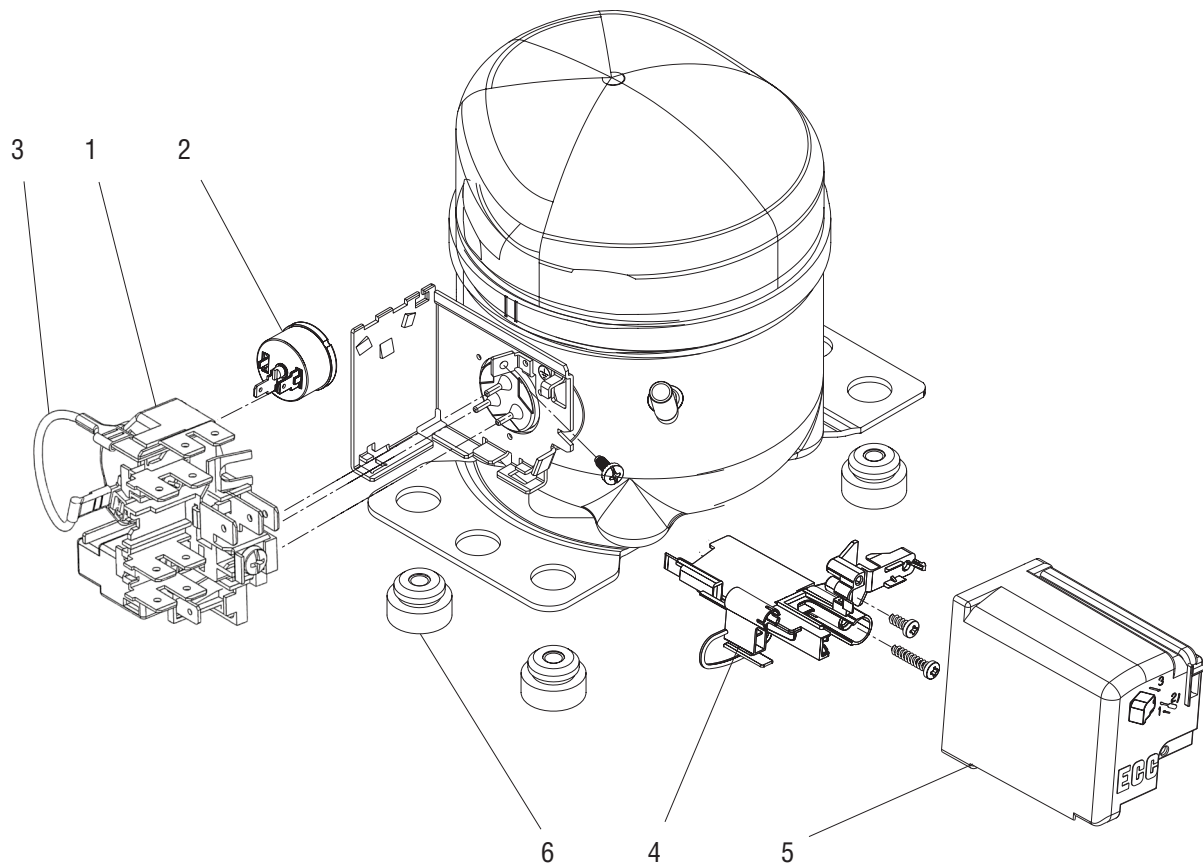
P4297

NOTE: Letters appearing within this illustration correspond to matching connections in other illustrations.

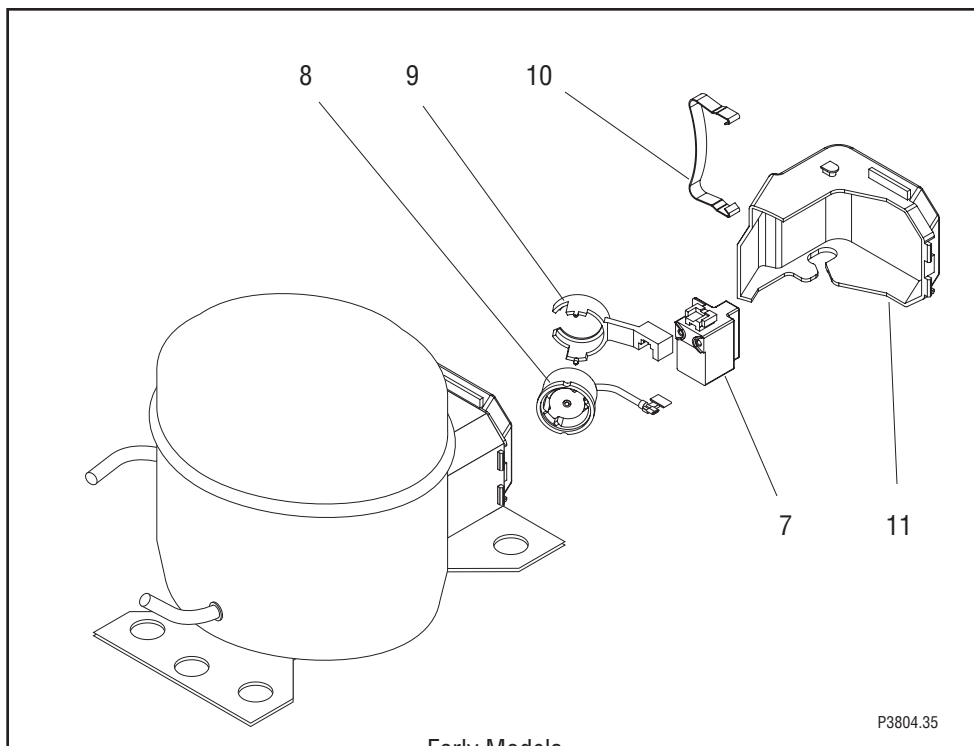
REFRIGERATION COMPONENTS (LG COMPRESSOR)

ITEM	PART NO.	QTY.	DESCRIPTION
1	35164.1001	1	Air Filter Assy (Includes item 19)
2	29951.0002	1	Condenser
	29951.0003	1	Condenser (Salt Air Resistent)
	02335.0001	4	Screw, Crimptite #8 x .38"
3	46112.0000	1	Tube (Requires brazing to install)
4	32089.0000	1	Tube (Requires brazing to install)
5	00396.0002	1	Tee (Requires brazing to install)
6	35178.0000	1	Adapter (Requires brazing to install)
7	38937.0000	2	Tube (Requires brazing to install)
8	35175.1002	1	Filter Dryer Assy (Requires brazing to install)
9	46113.0000	1	Tube (Requires brazing to install)
10	32776.0000	1	Accumulator
11	-----	1	Compressor (See COMPRESSOR COMPONENTS)
	34529.0000*	4	Washer
	00901.0000	4	Nut .25"-20
12	-----	4	Grommet
13	-----	4	Sleeve
			} Order item 16
14	-----	1	Fan Assy (See FAN ASSEMBLY)
	27243.0000	3	Screw #8-36 x .437"
15	34418.0001*	1	Bracket
	34418.0004*	1	Bracket (Salt Air Resistent)
	02308.0000	4	Screw, Pan Head #8-32 x .38"
16	28567.0000	1	Mounting Kit (Includes four each of items 12 & 13)
17	M2546.1000	-	Tape, Tube Insulating (Use as required)
18	M2336.1000	-	Insulation, Tube 25/50 - 0.25"ID x .19" wall x 6.0 Ft (Use as required)
19	12467.1002	-	Velcro, Loop 3.5" (4 pieces)
	12468.1002	-	Velcro, Hook 3.5" (4 pieces)
			} Not Illustrated
20	41105.0003	1	Edging 1.0"

* Indicates the part number listed is for reference only. See DESCRIPTION for possible service replacement.



P4040.30



Early Models

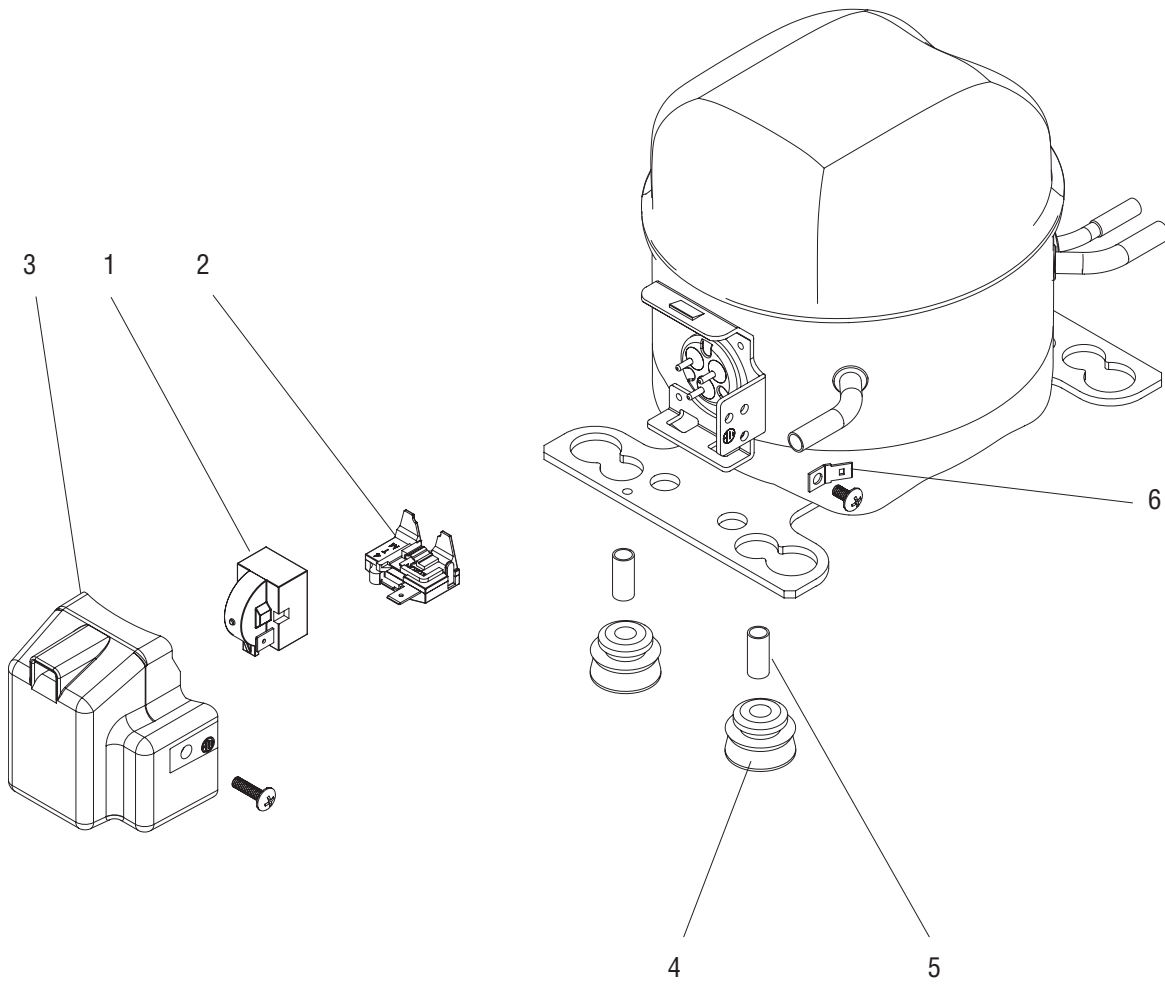
P3804.35

COMPRESSOR COMPONENTS (CUBIGEL)

ITEM	PART NO.	QTY.	DESCRIPTION
-	-----	1	Compressor (Early Models. Order new Compressor)
	33522.1002	1	Compressor (GD40ME) 120V (Includes items 1 - 6)
	33522.1003	1	Compressor 230V (Includes items 1 - 6)
1	39912.0002	1	Relay, Compressor 120V
	39912.0003	1	Relay, Compressor 230V
2	39908.0002	1	Overload Protector 120V
	39908.0003	1	Overload Protector 230V
3	41398.0000	1	Cable
4	41397.0000	1	Strain Relief
5	39907.0000	1	Cover
6	41396.0000	1	Mounting Kit (Includes 4 Grommets and Sleeves)
7	38897.0000	1	Relay, Compressor 120V
	38897.0001	1	Relay, Compressor 230V
8	38917.0000	1	Overload Protector
9	38916.0000	1	Retainer
10	38918.0000	1	Clip
11	38896.0000	1	Cover

} Early Model Compressors

* Indicates the part number listed is for reference only. See DESCRIPTION for possible service replacement.

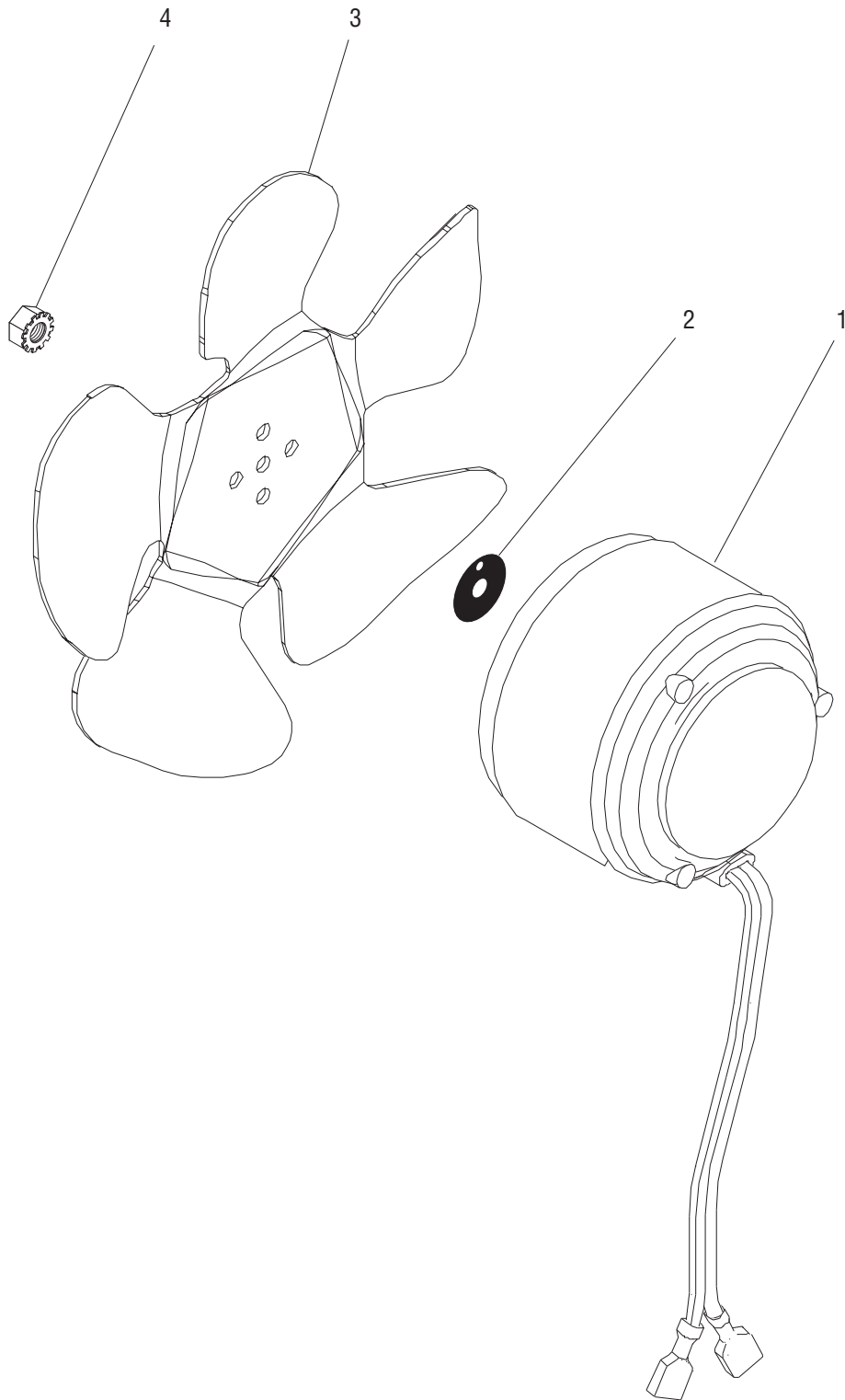


P4298.30

COMPRESSOR COMPONENTS (LG)

ITEM	PART NO.	QTY.	DESCRIPTION
-	45901.0000	1	Compressor 120V (Includes items 1 - 5)
	45901.0001	1	Compressor 230V (Includes items 1 - 5)
1	45899.0000	1	Relay, Compressor 120V
	45899.0001	1	Relay, Compressor 230V
2	45898.0000	1	Overload Protector 120V
	45898.0001	1	Overload Protector 230V
3	45908.0000	1	Cover
	45909.0000	1	Screw
4	45897.0000	4	Grommet
5	45896.0000	4	Sleeve
6	36528.0000	1	Terminal Adapter
	39142.0000	1	Screw, Truss Head M4 x 7mm

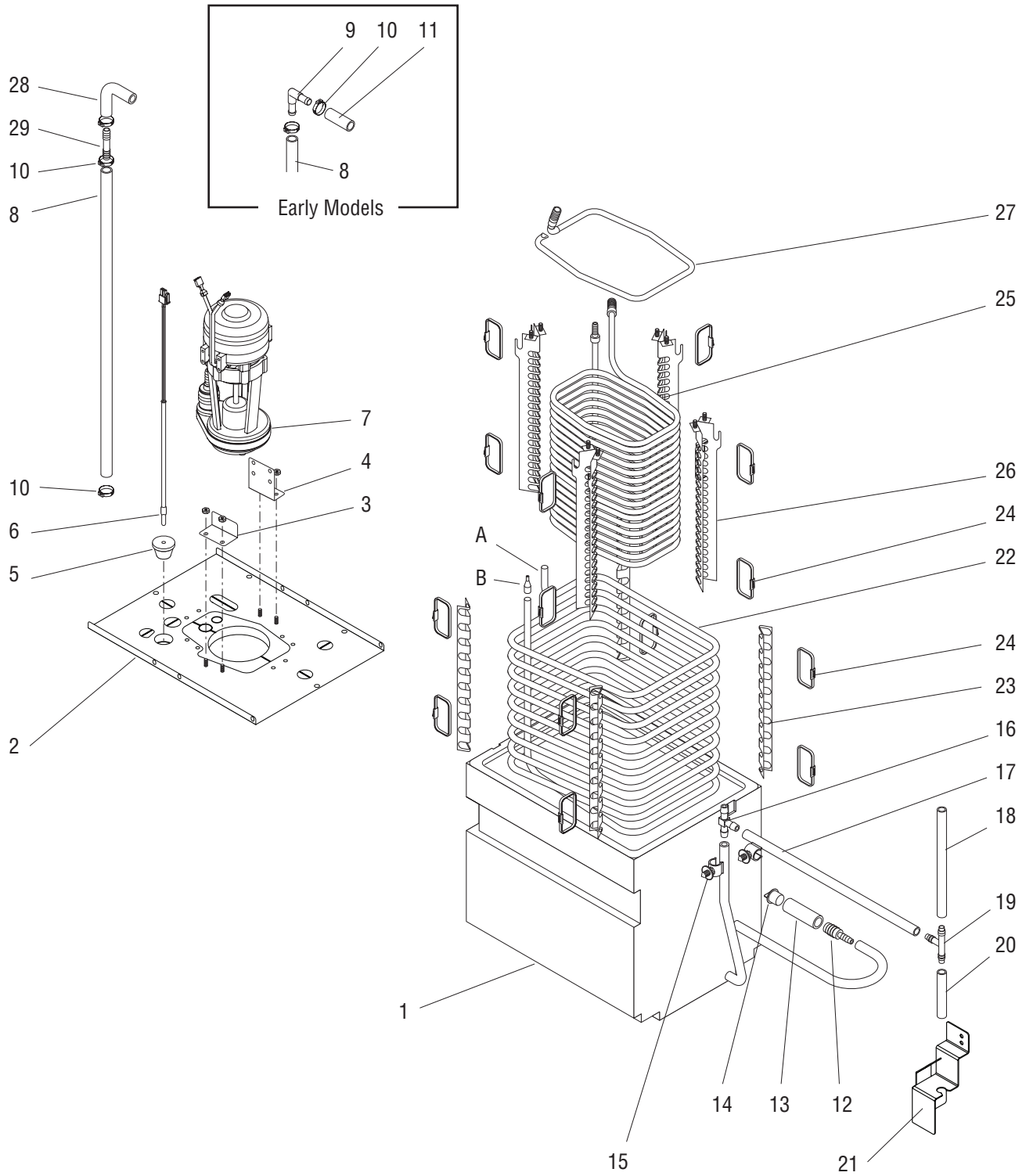
* Indicates the part number listed is for reference only. See DESCRIPTION for possible service replacement.



FAN ASSEMBLY

ITEM	PART NO.	QTY.	DESCRIPTION
-	32204.1001	1	Fan Assy 120V (Includes items 1-4)
	32204.1002	1	Fan Assy 230V (Includes items 1-4)
	32204.0010	1	Fan Assy 120V (Salt Air Resistent)
1	33603.0000	1	Motor Assy 120V
	33603.0001	1	Motor Assy 230V
2	33602.0000	1	Blade, Fan
3	27258.0000	1	Silencer
4	23700.0000	1	Nut .25"-20

* Indicates the part number listed is for reference only. See DESCRIPTION for possible service replacement.



NOTE: Letters appearing within this illustration correspond to matching connections in other illustrations.

P3616

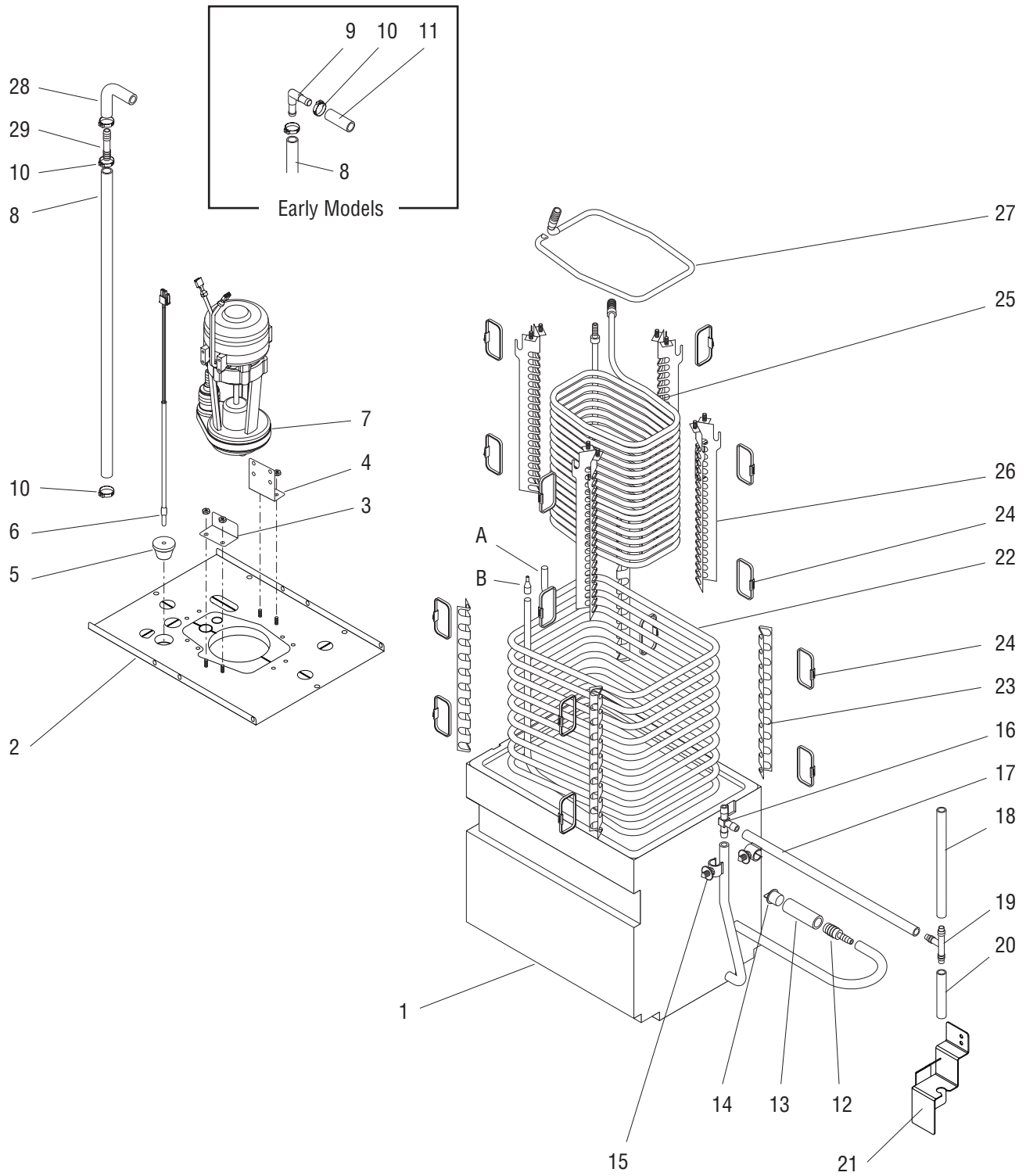
WATER TANK ASSY (EARLY MODELS)

ITEM	PART NO.	QTY.	DESCRIPTION
1	35165.1003	1	Tank Assy
	24544.0000	6	Screw, Pan Head #8-18
2	35272.0002*	1	Lid Assy
	24544.0000	6	Screw, Pan Head #8-18
3	38833.0001	1	Bracket
	00973.0001	2	Nut, Keps #6-32
4	38833.0000	1	Bracket
	00973.0001	2	Nut, Keps #6-32
5	33801.0003	1	Grommet
6	28891.1000	1	Probe, Temperature
7	38827.1002	1	Pump Assy 120V
	38827.1003	1	Pump Assy 230V
	27243.0000	4	Screw #8-36 x .437"
8	45848.0001	1	Hose, Flex .38" ID x .625" OD x 20.0" (Early Models)
	45848.0019	1	Hose, Flex .38" ID x .625" OD x 18.0" (Late Models)
9	37850.0000	1	Elbow .38" Barb
10	21275.0003	3	Clamp .57" - .70"
11	45848.0000	1	Hose, Flex .38" ID x .625" OD x 1.50"
12	38924.0000	1	Reducer .50 to .25" Barb
13	32591.0014*	1	Hose, Flex .38" ID x .625" OD x 3.0" (Order item 34)
14	38925.0000	1	Plug
15	27410.0000	3	Clip, Tube Mounting
16	33153.0000	1	Tee .25" Barb
17	11707.0016*	1	Tube, Silicone .25" ID x 8.0" (Order item 33)
18	11707.0043*	1	Tube, Silicone .25" ID x 6.25" (Order item 33)
19	38605.0000	1	Tee .25" Barb
20	11707.0009*	1	Tube, Silicone .25" ID x 2.6" (Order item 33)
21	38662.0001	1	Bracket
	02308.0000	2	Screw, Pan Head #8-32 x .38"
22	47581.0000	1	Evapoator Coil Assy (Includes items 23 & 24)
23	33533.0000*	4	Spacer
24	36329.0002	20	Cable Tie
25	38828.1000	1	Product Coil (Order item 35)
26	34416.0000	4	Spacer

(Continued)

* Indicates the part number listed is for reference only. See DESCRIPTION for possible service replacement.

(Continued)



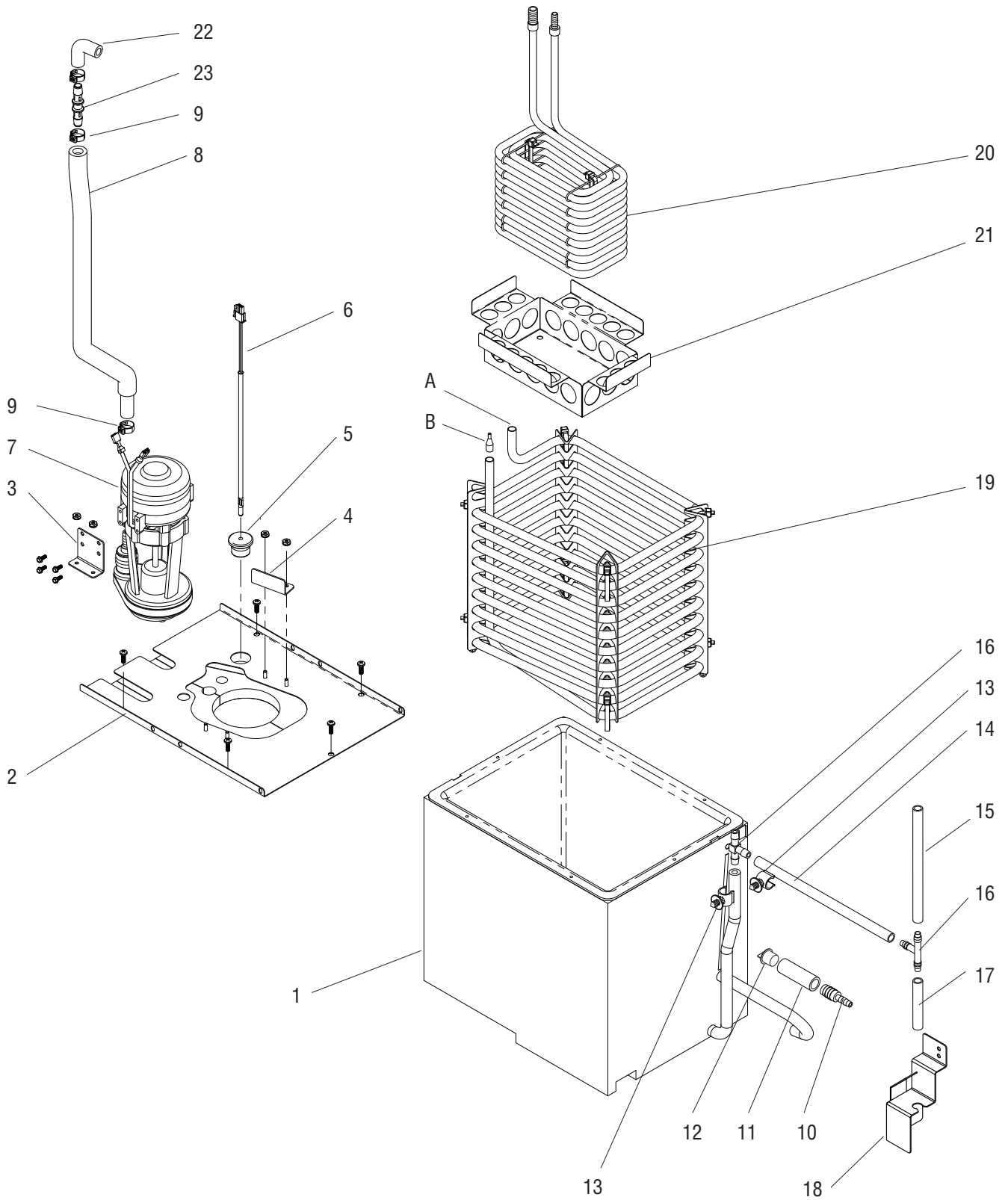
NOTE: Letters appearing within this illustration correspond to matching connections in other illustrations.

P3616

WATER TANK ASSY (EARLY MODELS)

ITEM	PART NO.	QTY.	DESCRIPTION
27	38829.0000	1	Manifold, Return Water
28	45928.0000	1	Elbow
29	34644.0000	1	Connector .38" Barb
30	M2337.1000	-	Insulation, Tube 25/50 .50" ID x 72.0" (Cut to required length)
31	M2336.1000	-	Insulation, Tube 25/50 .38" ID x 72.0" (Cut to required length)
32	45848.1000	-	Hose, Flex .38" ID x .625" OD x 12.0" (Cut to required length)
	45848.1001	-	Hose, Flex .38" ID x .625" OD x 36.0" (Cut to required length)
	45848.1002	-	Hose, Flex .38" ID x .625" OD x 120.0" (Cut to required length)
33	11707.1000	-	Hose, Silicone .25" ID x .625" OD x 12.0" (Cut to required length)
	11707.1001	-	Hose, Silicone .25" ID x .625" OD x 36.0" (Cut to required length)
	11707.1002	-	Hose, Silicone .25" ID x .625" OD x 120.0" (Cut to required length)
34	32591.1001	-	Hose, Silicone .50" ID x .625" OD x 12.0" (Cut to required length)
	32591.1002	-	Hose, Silicone .50" ID x .625" OD x 36.0" (Cut to required length)
35	38943.1000	-	Product Coil Assy (Includes items 24 - 27)

* Indicates the part number listed is for reference only. See DESCRIPTION for possible service replacement.



NOTE: Letters appearing within this illustration correspond to matching connections in other illustrations.

P4363.50

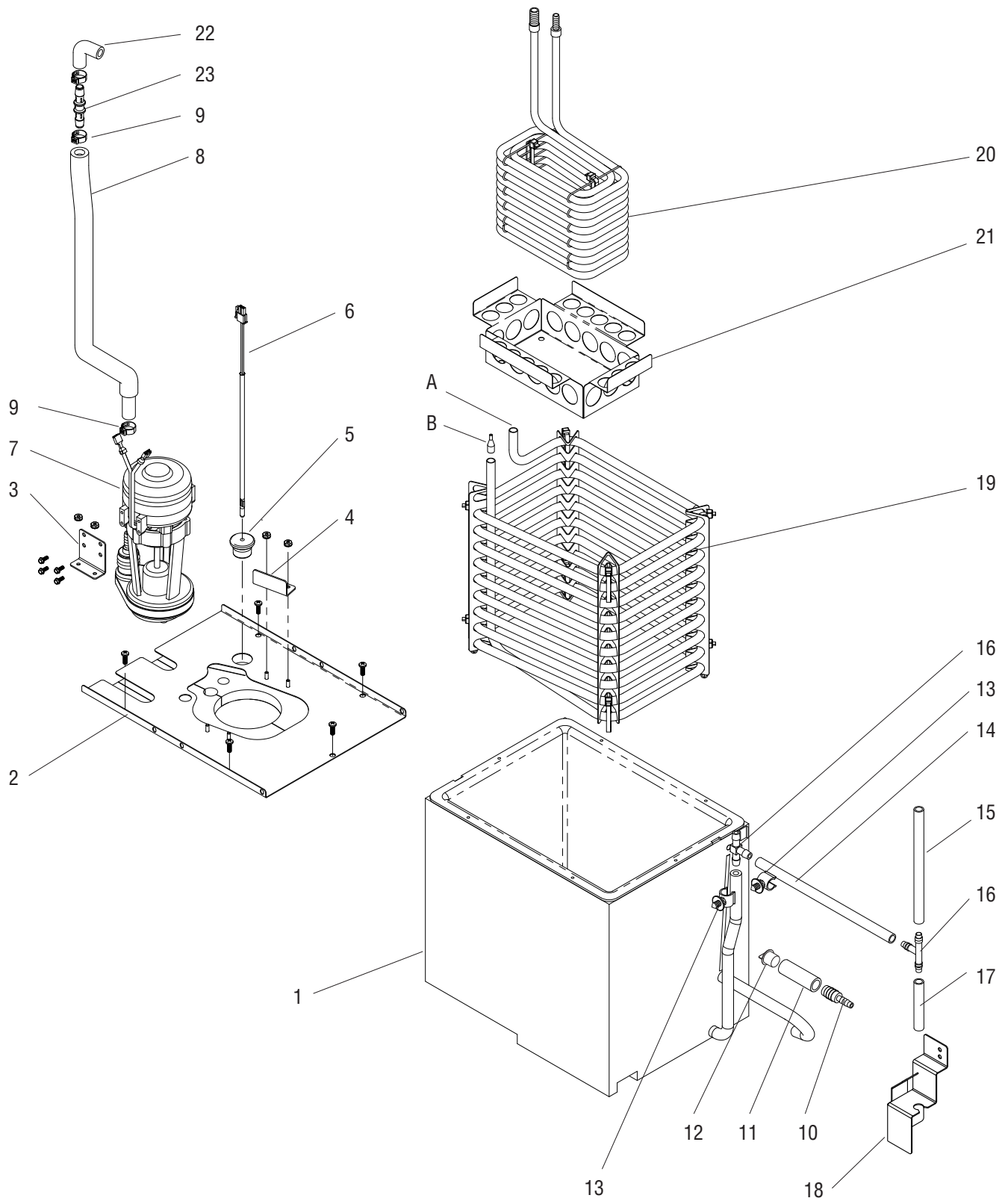
WATER TANK ASSY (LATE MODELS)

ITEM	PART NO.	QTY.	DESCRIPTION
1	35165.1003 24544.0000	1 6	Tank Assy Screw, Pan Head #8-18
2	35272.0003* 24544.0000	1 5	Lid Assy Screw, Pan Head #8-18
3	38833.0001 00973.0001	1 2	Bracket Nut, Keps #6-32
4	38833.0000 00973.0001	1 2	Bracket Nut, Keps #6-32
5	33801.0003	1	Grommet
6	44762.0000	1	Probe, Temperature
7	39655.0002 27243.0000	1 4	Pump Assy 120V Screw #8-36 x .437"
8	45848.0019*	1	Hose, Flex .38" ID x .625" OD x 18.0" (Order item 27)
9	21275.0003	3	Clamp .57" - .70"
10	38924.0000	1	Reducer .50 to .25" Barb
11	32591.0014*	1	Hose, Flex .38" ID x .625" OD x 3.0" (Order item 29)
12	38925.0000	1	Plug
13	27410.0000	2	Clip, Tube Mounting
14	11707.0016*	1	Tube, Silicone .25" ID x 8.0" (Order item 28)
15	11707.0043*	1	Tube, Silicone .25" ID x 6.25" (Order item 28)
16	38605.0000	2	Tee .25" Barb
17	11707.0009*	1	Tube, Silicone .25" ID x 2.6" (Order item 28)
18	38662.0001 02308.0000	1 2	Bracket Screw, Pan Head #8-32 x .38"
19	47581.0000	1	Evapoator Coil Assy (Includes spacers & ties)
20	51522.0000*	1	Product Coil Assy (Includes wire form & ties)
21	50548.0000	1	Baffle
22	45928.0000	1	Elbow
23	51902.0000	1	Connector .38" Barb

(Continued)

* Indicates the part number listed is for reference only. See DESCRIPTION for possible service replacement.

(Continued)



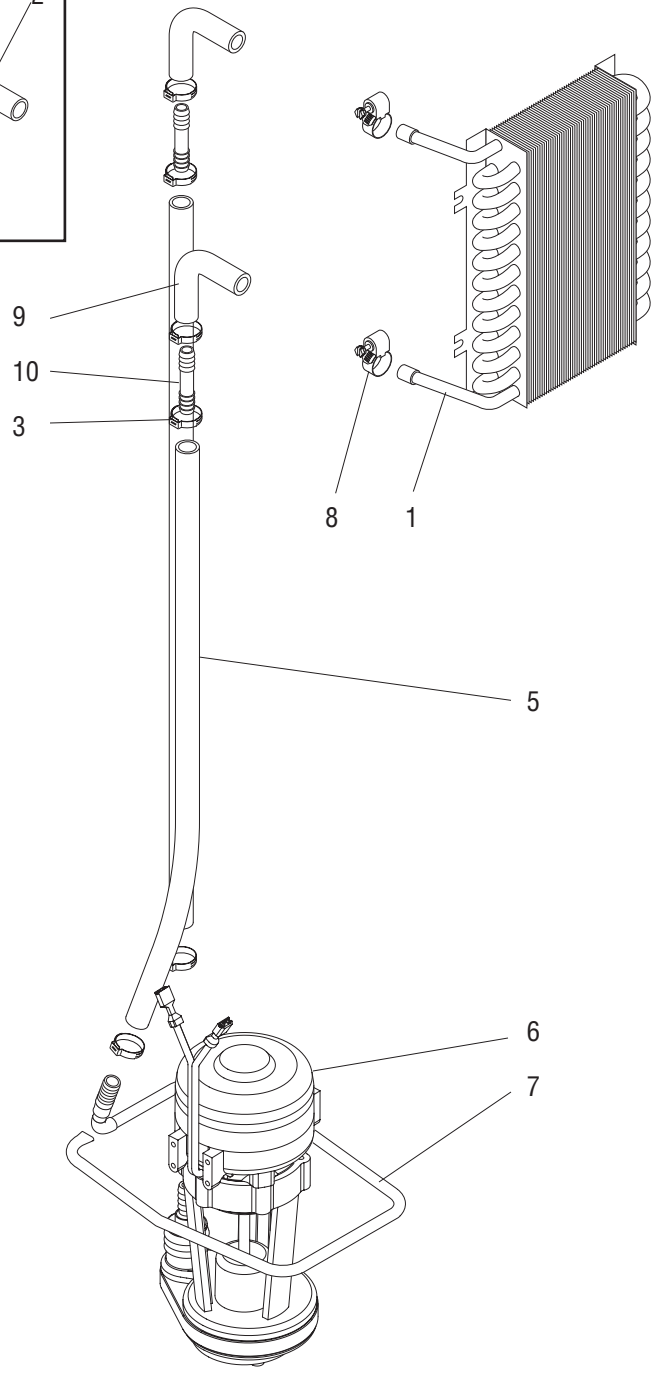
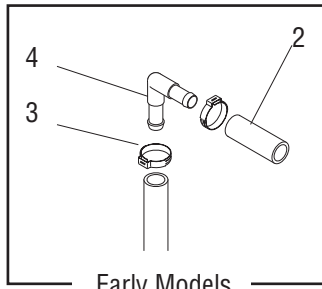
NOTE: Letters appearing within this illustration correspond to matching connections in other illustrations.

P4363.50

WATER TANK ASSY (LATE MODELS)

ITEM	PART NO.	QTY.	DESCRIPTION
24	M2337.1000	-	Insulation, Tube 25/50 .50" ID x 72.0" (Cut to required length)
25	M2336.1000	-	Insulation, Tube 25/50 .38" ID x 72.0" (Cut to required length)
26	M2546.1000	-	Tape, Tube Insulating (Use as required)
27	45848.1000	-	Hose, Flex .38" ID x .625" OD x 12.0" (Cut to required length)
	45848.1001	-	Hose, Flex .38" ID x .625" OD x 36.0" (Cut to required length)
	45848.1002	-	Hose, Flex .38" ID x .625" OD x 120.0" (Cut to required length)
28	11707.1000	-	Hose, Silicone .25" ID x .625" OD x 12.0" (Cut to required length)
	11707.1001	-	Hose, Silicone .25" ID x .625" OD x 36.0" (Cut to required length)
	11707.1002	-	Hose, Silicone .25" ID x .625" OD x 120.0" (Cut to required length)
29	32591.1001	-	Hose, Silicone .50" ID x .625" OD x 12.0" (Cut to required length)
	32591.1002	-	Hose, Silicone .50" ID x .625" OD x 36.0" (Cut to required length)

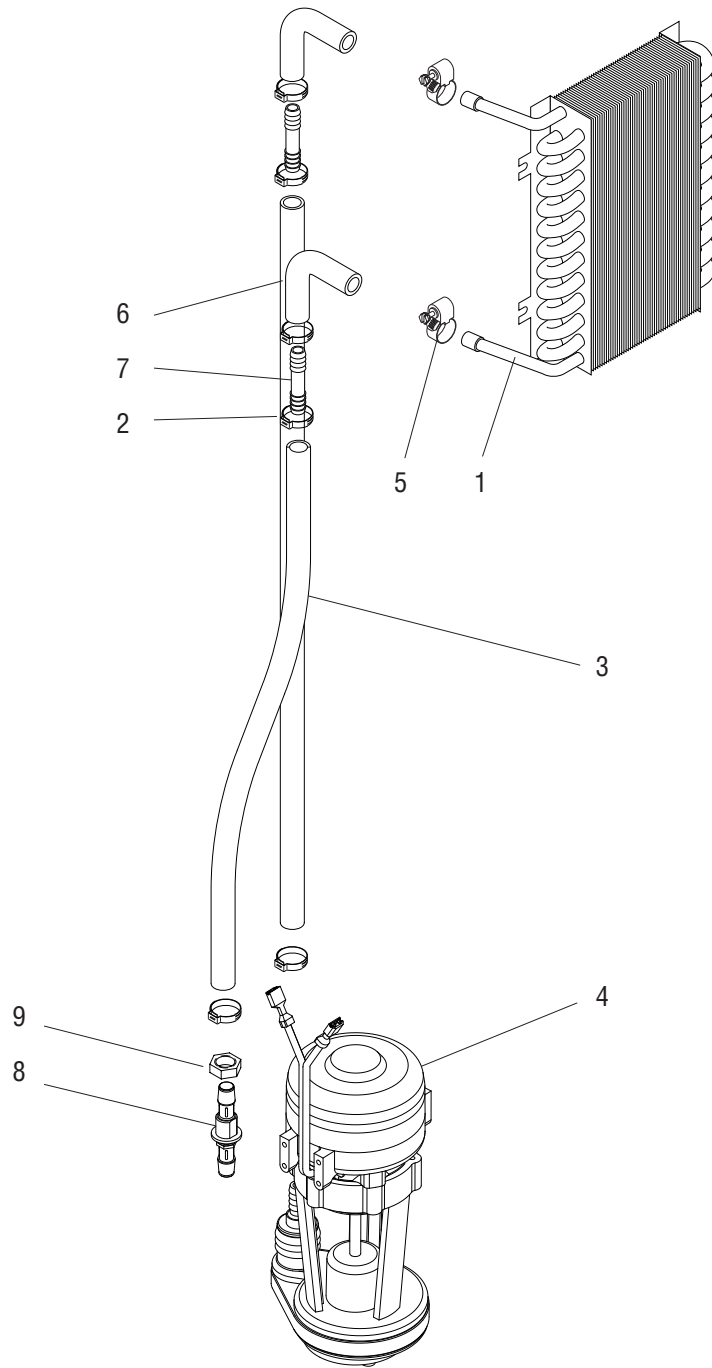
* Indicates the part number listed is for reference only. See DESCRIPTION for possible service replacement.



CIRCULATION PUMP & LINES (EARLY MODELS)

ITEM	PART NO.	QTY.	DESCRIPTION
1	-----	1	Coil, Upper Cabinet (See UPPER CABINET & PANELS)
2	45848.0000*	1	Tube, Silicone .38" ID x 1.5" (Order item 12)
3	21275.0003	4	Clamp .57" - .70"
4	51882.0000	1	Elbow .38" Barb (Early Models)
5	45848.0002*	1	Tube, Silicone .38" ID x 17.0" (Order item 12)
6	-----	1	Pump, Circulation (See WATER TANK ASSEMBLY)
7	-----	1	Manifold, Return Water (See WATER TANK ASSEMBLY)
8	29421.0000	2	Clamp, Hose Worm Drive .625/.75"
9	45928.0000	1	Elbow
10	34644.0000	1	Connector .38" Barb
11	M2336.1000	-	Insulation, Tube 25/50 .38" ID x 72.0" (Cut to required length)
12	45848.1000	-	Hose, Flex .38" ID x .625" OD x 12.0" (Cut to required length)
	45848.1001	-	Hose, Flex .38" ID x .625" OD x 36.0" (Cut to required length)
	45848.1002	-	Hose, Flex .38" ID x .625" OD x 120.0" (Cut to required length)

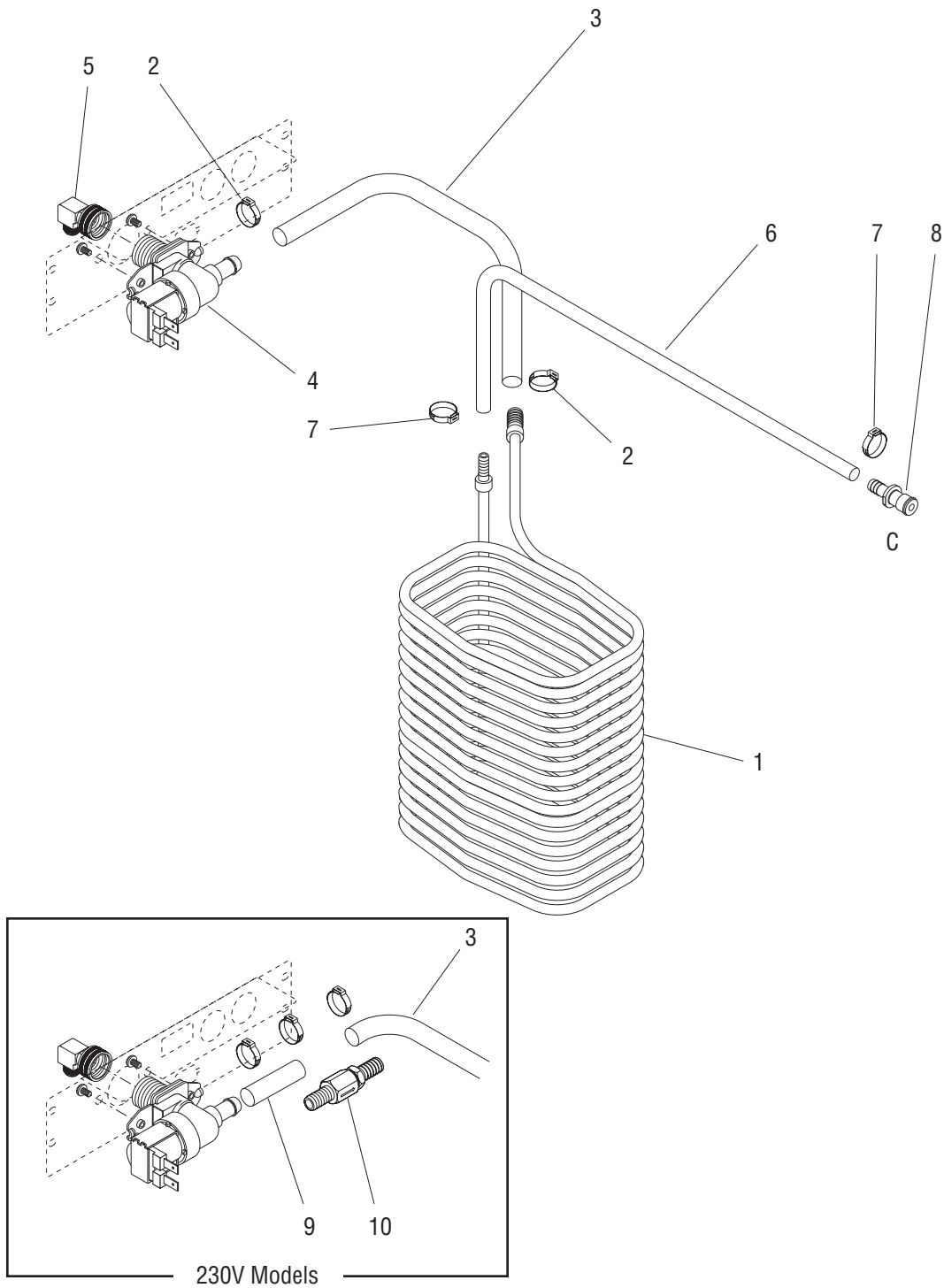
* Indicates the part number listed is for reference only. See DESCRIPTION for possible service replacement.



CIRCULATION PUMP & LINES (LATE MODELS)

ITEM	PART NO.	QTY.	DESCRIPTION
1	-----	1	Coil, Upper Cabinet (See UPPER CABINET & PANELS)
2	21275.0003	3	Clamp .57" - .70"
3	45848.0005*	1	Tube, Silicone .38" ID x 17.0" (Order item 12)
4	-----	1	Pump, Circulation (See WATER TANK ASSEMBLY)
5	29421.0000	2	Clamp, Hose Worm Drive .625/.75"
6	45928.0000	1	Elbow
7	51902.0000	1	Connector .38" Barb
8	51906.0000	1	Fitting, Bulkhead
9	51921.0000	1	Nut
10	M2336.1000	-	Insulation, Tube 25/50 .38" ID x 72.0" (Cut to required length)
11	M2546.1000	-	Tape, Tube Insulating (Use as required)
12	45848.1000	-	Hose, Flex .38" ID x .625" OD x 12.0" (Cut to required length)
	45848.1001	-	Hose, Flex .38" ID x .625" OD x 36.0" (Cut to required length)
	45848.1002	-	Hose, Flex .38" ID x .625" OD x 120.0" (Cut to required length)

* Indicates the part number listed is for reference only. See DESCRIPTION for possible service replacement.

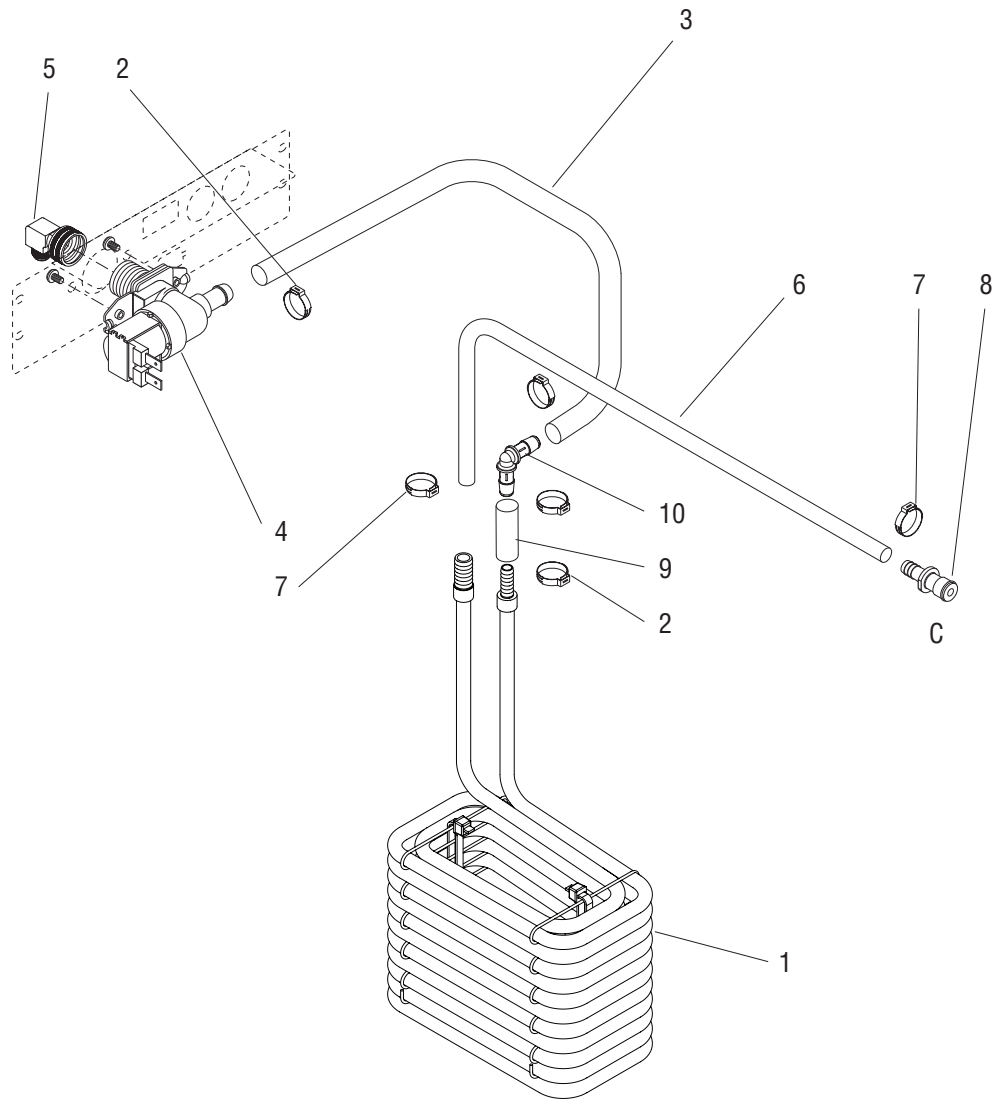


NOTE: Letters appearing within this illustration correspond to matching connections in other illustrations.

PRODUCT COIL & LINES (EARLY MODELS)

ITEM	PART NO.	QTY.	DESCRIPTION
1	-----	1	Product Coil (See WATER TANK ASSEMBLY)
2	21275.0003	2	Clamp .57" - .70" (Two additional used on 230V)
3	45848.0009	1	Hose, Flex .38" ID x 5.75" (120V)
	45848.0021	1	Hose, Flex .38" ID x 4.75" (Order item 11)(230V)
4	36233.1005	1	Valve, Water Inlet 120V
	36233.1006	1	Valve, Water Inlet 230V
	32283.0000	2	Screw, Pan Head M4 x 6mm
5	37297.1001	1	Fitting, Elbow .38" FI x .75" Fine Hose (Includes Gasket)
	41640.0000	1	Gasket
6	46048.0008*	1	Hose, Braided .25" ID x 15.75" (Order item 12)
7	21275.0011	2	Clamp .45" - .55"
8	34460.0000	1	Coupling, Quick Disconnect, Male
9	34325.0004*	1	Hose, Flex .38" ID x 1.50" (Order item 11)(230V)
10	40071.0001	1	Check Valve (230V)
11	45848.1000	-	Hose, Flex .38" ID x 12.0" (Cut to required length)
	45848.1001	-	Hose, Flex .38" ID x 36.0" (Cut to required length)
	45848.1002	-	Hose, Flex .38" ID x 120.0" (Cut to required length)
12	46048.1000	1	Hose, Braided .25" ID x 12.0" (Cut to required length)
	46048.1001	1	Hose, Braided .25" ID x 36.0" (Cut to required length)
	46048.1002	1	Hose, Braided .25" ID x 120.0" (Cut to required length)
13	M2336.1000	-	Insulation, Tube 25/50 .38" ID x 72.0" (Cut to required length)
14	43644.0000	-	Kit, Valve Rebuild (Not Illustrated)

* Indicates the part number listed is for reference only. See DESCRIPTION for possible service replacement.

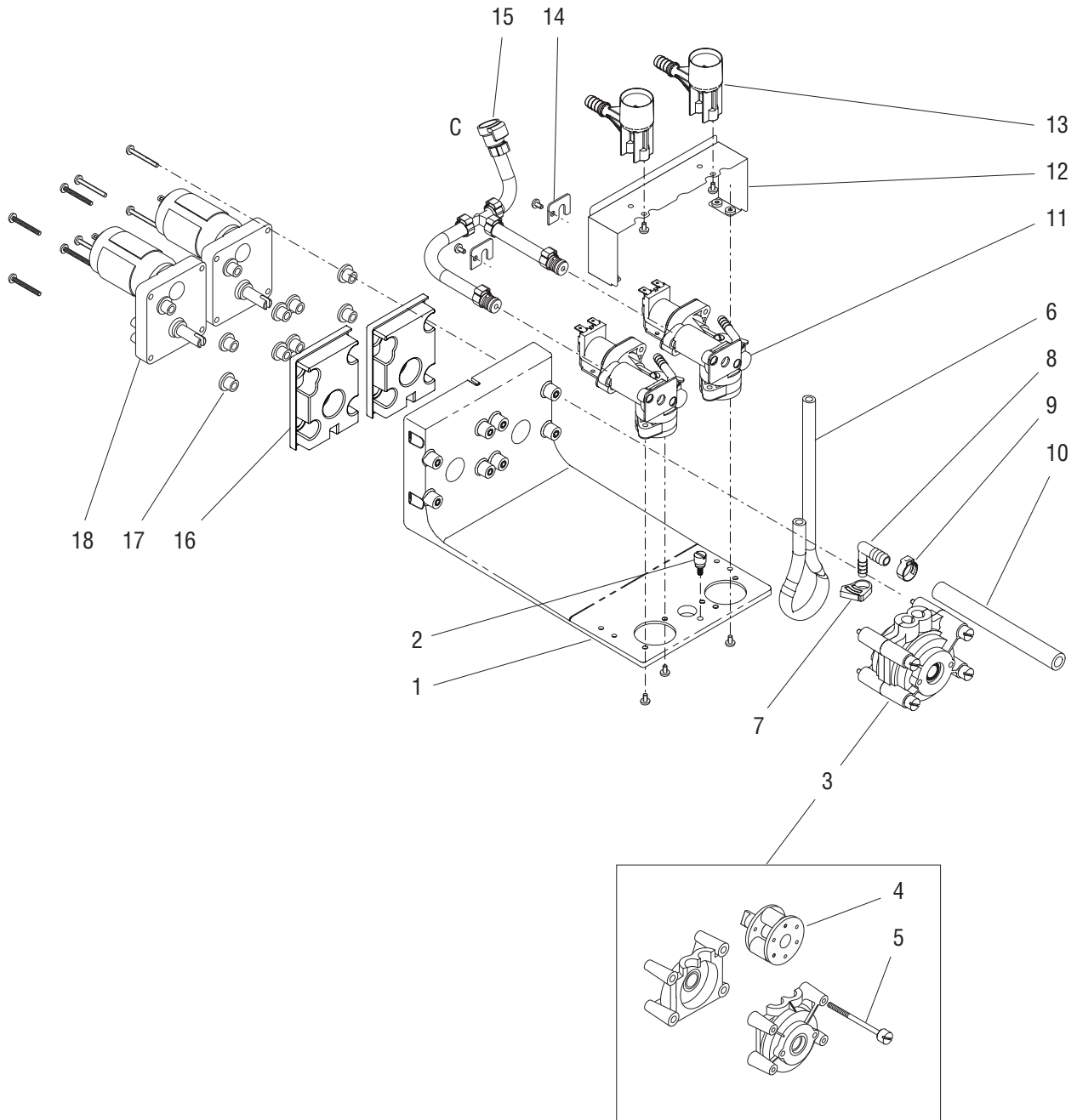


NOTE: Letters appearing within this illustration correspond to matching connections in other illustrations.

PRODUCT COIL & LINES (LATE MODELS)

ITEM	PART NO.	QTY.	DESCRIPTION
1	-----	1	Product Coil (See WATER TANK ASSEMBLY)
2	21275.0003	4	Clamp .57" - .70"
3	45848.0004*	1	Hose, Flex .38" ID x 8.75" (Order item 11)
4	36233.1005	1	Valve, Water Inlet 120V (See item 15)
	32283.0000	2	Screw, Pan Head M4 x 6mm
5	37297.1001	1	Fitting, Elbow .38" FI x .75" Fine Hose (Includes Gasket)
	41640.0000	1	Gasket
6	46048.0001*	1	Hose, Braided .25" ID x 15.75" (Order item 12)
7	21275.0006	2	Clamp .406" - .504"
8	34460.0000	1	Coupling, Quick Disconnect, Male
9	45848.0000*	1	Hose, Flex .38" ID x 1.50" (Order item 11)
10	51882.0000	1	Fitting, Elbow .38" Barb
11	45848.1000	-	Hose, Flex .38" ID x 12.0" (Cut to required length)
	45848.1001	-	Hose, Flex .38" ID x 36.0" (Cut to required length)
	45848.1002	-	Hose, Flex .38" ID x 120.0" (Cut to required length)
12	46048.1000	1	Hose, Braided .25" ID x 12.0" (Cut to required length)
	46048.1001	1	Hose, Braided .25" ID x 36.0" (Cut to required length)
	46048.1002	1	Hose, Braided .25" ID x 120.0" (Cut to required length)
13	M2336.1000	-	Insulation, Tube 25/50 .38" ID x 72.0" (Cut to required length)
14	M2546.1000	-	Tape, Tube Insulating (Use as required)
15	43644.0000	-	Kit, Valve Rebuild (Not Illustrated)

* Indicates the part number listed is for reference only. See DESCRIPTION for possible service replacement.



NOTE: Letters appearing within this illustration correspond to matching connections in other illustrations.

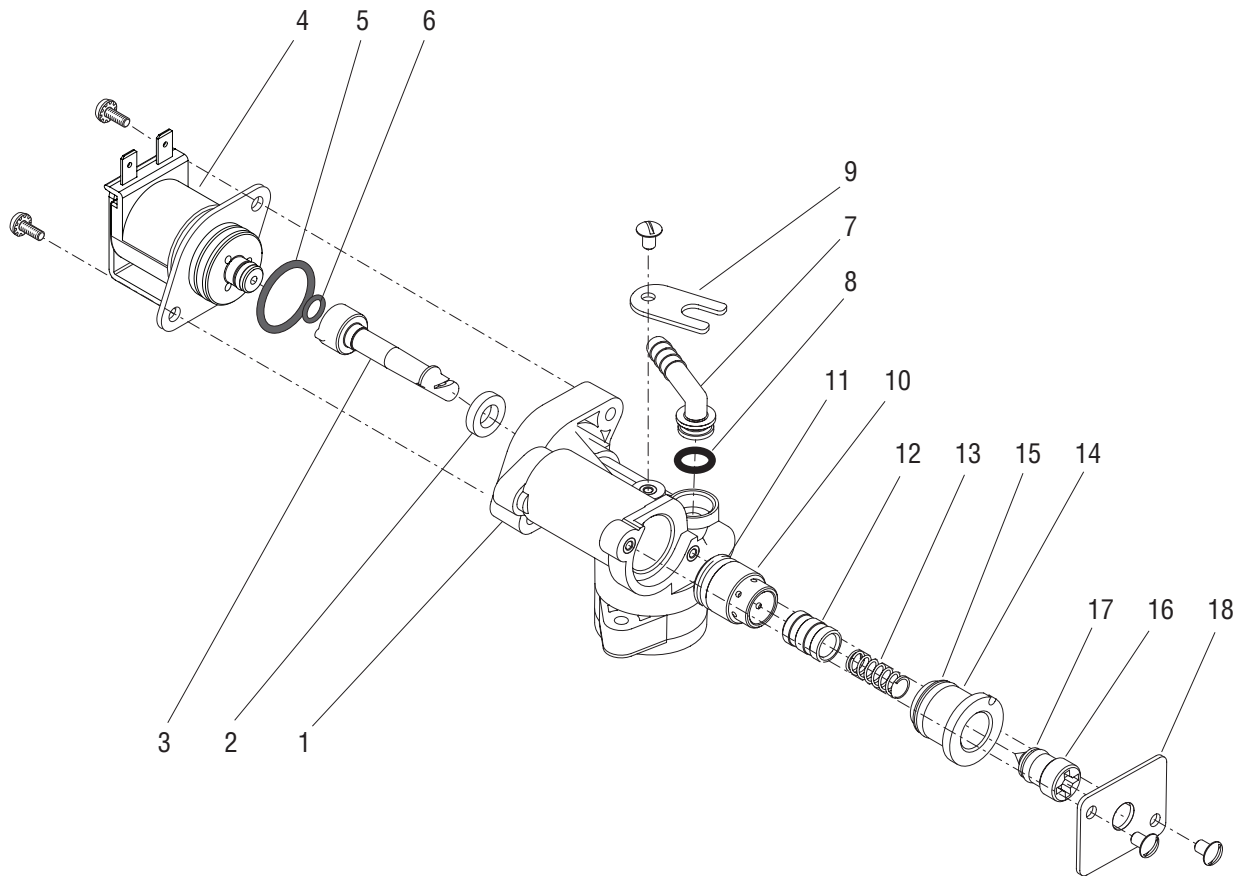
DISPENSE PLATFORM ASSEMBLY

ITEM	PART NO.	QTY.	DESCRIPTION
-	38474.1000	1	Platform Assy (Includes items 1 - 19)
1	38121.0001	1	Platform
2	38104.0000	1	Thumbscrew
3	50295.0000	2	Pump Assy (Includes items 4 & 5)
4	50294.0000	2	Rotor
5	01370.0001	8	Screw, Pan Head #8-32 x 2.45"
6	28755.1011	2	Tube, Norprene .25" ID x 17.0" lg
7	32732.0000	2	Clamp .39"/.48"
8	32656.0000	2	Fitting, Elbow .25" Barb x .38" Barb
9	21275.0003	2	Clamp .57"/.70"
10	45848.0016	2	Hose, Flex .38" ID x 5.25" lg (Order item 20)
11	38018.1001	2	Dispense Valve (See DISPENSE VALVE)
	01308.0000	4	Screw, Truss Head #6-32 x 25"
12	38660.0001	1	Bracket
	01308.0000	4	Screw, Truss Head #6-32 x 25"
13	38120.0001	2	Fitting, Bottle Adapter
	01308.0000	4	Screw, Truss Head #6-32 x 25"
14	37786.0000	2	Plate
	01308.0000	2	Screw, Truss Head #6-32 x 25"
15	-----	1	Manifold, Plain Water (See PLAIN WATER MANIFOLD)
16	33781.0000	2	Gasket
17	32957.0000	8	Bushing, Rubber
18	32613.1003	2	Motor Assy
	01322.0001	4	Screw #8-32 x 1.25"

The following items are not illustrated

19	38873.1000	1	Harness, Dispense Platform
20	45848.1000	-	Hose, Flex .375" ID x 12.0" (Use as required)
	45848.1001	-	Hose, Flex .375" ID x 36.0" (Use as required)
	45848.1002	-	Hose, Flex .375" ID x 120.0" (Use as required)
21	39690.0000	-	Pump Tube (Includes items 6,7,8,9 & 10)

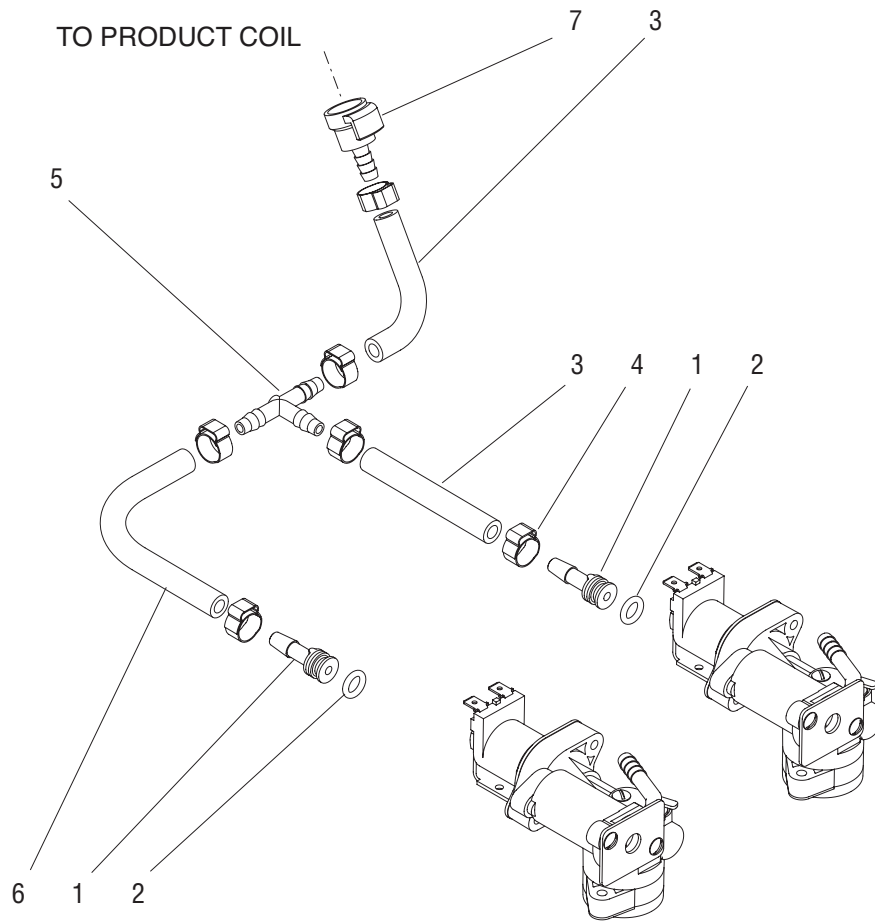
* Indicates the part number listed is for reference only. See DESCRIPTION for possible service replacement.



DISPENSE VALVE ASSEMBLY

ITEM	PART NO.	QTY.	DESCRIPTION
-	38018.1001	1	Dispense Valve Assy (Includes items 1 - 19)
1	37801.0003	1	Body
2	37990.0000	1	Seal
3	37843.0001	1	Nozzle, Water
4	32252.0001	1	Valve, Solenoid (Includes items 5 & 6)
	01347.0000	2	Screw, Truss Head 6-32 x .38"
5	33580.0000	1	O-ring
6	33553.0000	1	O-ring
7	32463.0000	1	Fitting, Elbow
8	32849.0001	1	O-ring (Also use item 19)
9	37853.0000	1	Clamp
	01308.0000	1	Screw #6-32 x .25"
10	32603.0000	1	Sleeve
11	32852.0000	1	O-ring (Also use item 19)
12	32602.0000	1	Piston
13	32853.0001	1	Spring, Flow Control
14	32624.0001	1	Bonnet, Adjuster
15	33725.0000	1	O-ring (Also use item 19)
16	32623.0000	1	Adjuster, Position
17	32851.0000	1	O-ring (Also use item 19)
18	37977.0000	1	Bracket, Water Adjustment
	01308.0000	2	Screw #6-32 x .25"
19	M2568.1000	-	Grease, USDA H-1 (Use when assembling items 8,11,15 & 17)

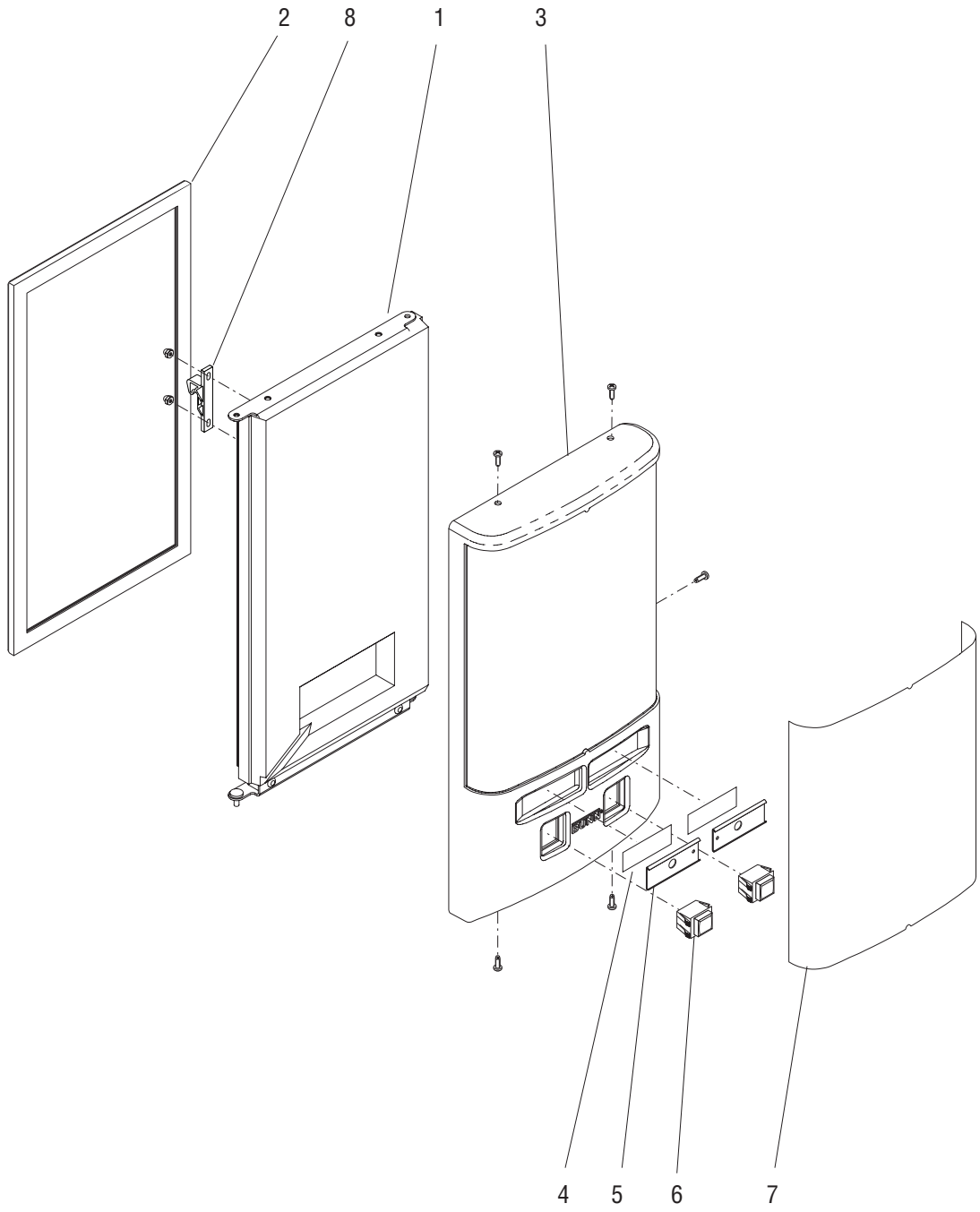
* Indicates the part number listed is for reference only. See DESCRIPTION for possible service replacement.



PLAIN WATER MANIFOLD

ITEM	PART NO.	QTY.	DESCRIPTION
1	32631.0000	2	Fitting, Straight
2	32849.0001	2	O-ring
3	46048.0003	2	Hose, Braided .25" ID x 3.0" (Order item 8)
4	21275.0011	6	Clamp .45 - .55"
5	38605.0000	1	Tee .25" Barb
6	46048.0004	1	Hose, Braided .25" ID x 5.25" (Order item 8)
7	34461.0000	1	Coupling, Quick Disconnect, Female
8	46048.1000	1	Hose, Braided .25" ID x 12.0" (Cut to required length)
	46048.1001	1	Hose, Braided .25" ID x 36.0" (Cut to required length)
	46048.1002	1	Hose, Braided .25" ID x 120.0" (Cut to required length)

* Indicates the part number listed is for reference only. See DESCRIPTION for possible service replacement.



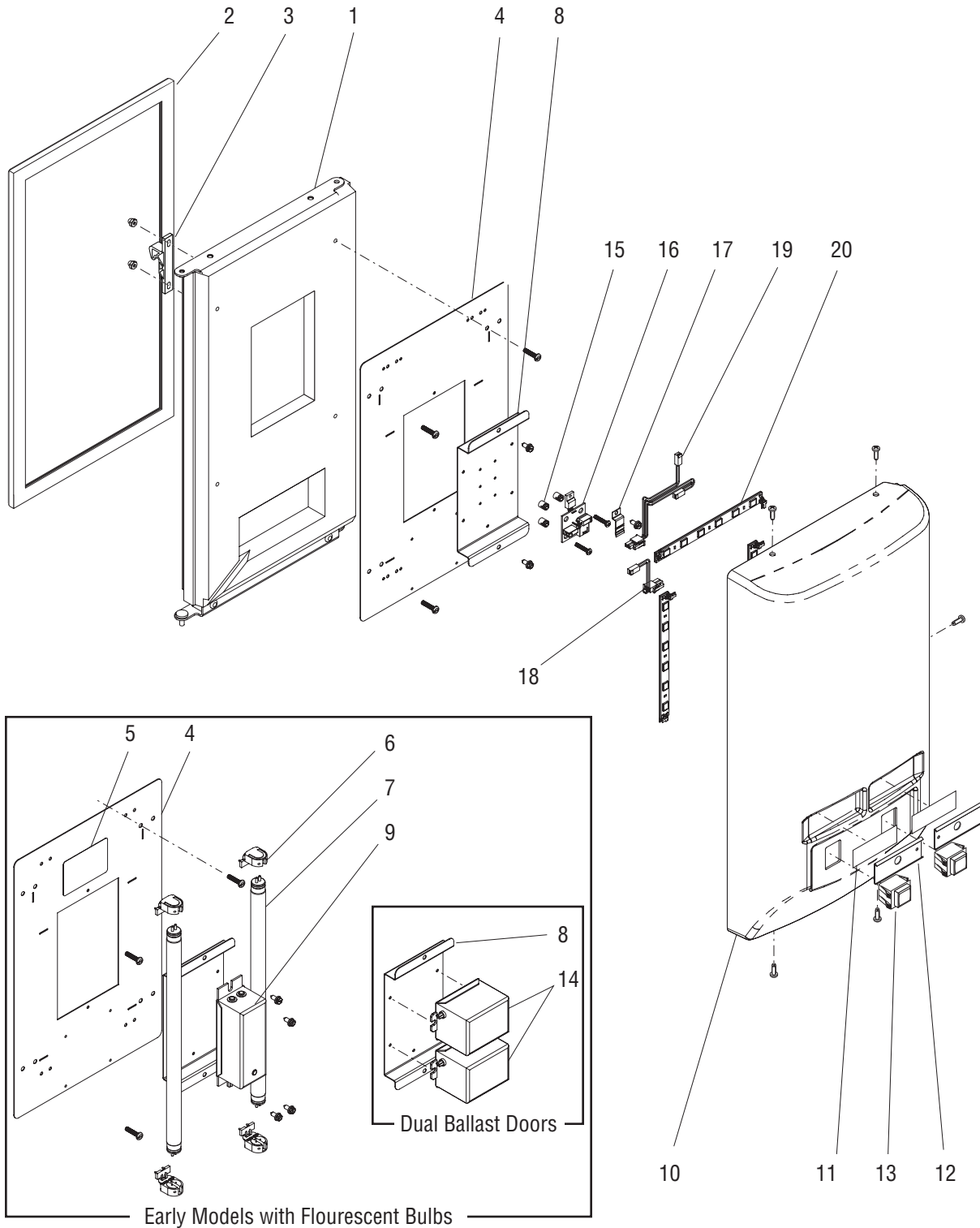
DOOR ASSEMBLY - UNLITED

ITEM	PART NO.	QTY.	DESCRIPTION
1	38485.0000	1	Door, Inner (Includes item 2)
2	38568.0002	1	Gasket, Door
3	38476.1000	1	Cover, Door Front
	02331.0001	5	Screw, Truss Head, Blk #10-32 x .375"
4	32819.0001	2	Strip, Adhesive
5	37018.0001	2	Flavor Label Holder
6	28296.0002	2	Switch, Dispense
7	38560.0000	1	Decal, Door Wrap (BUNN Juice)
	38560.0001	1	Decal, Door Wrap (BUNN Iced Coffee)
8	34667.0000	1	Keeper, Door Latch
	02319.0000	2	Nut, Acorn
	01501.0000	2	Washer

The following items are not illustrated

9	38871.0000	1	Wiring Harness, Switches
10	32861.0000	-	Decals, Flavor (BUNN Juice)
	32861.0001	-	Decals, Flavor (BUNN Iced Coffee)

* Indicates the part number listed is for reference only. See DESCRIPTION for possible service replacement.



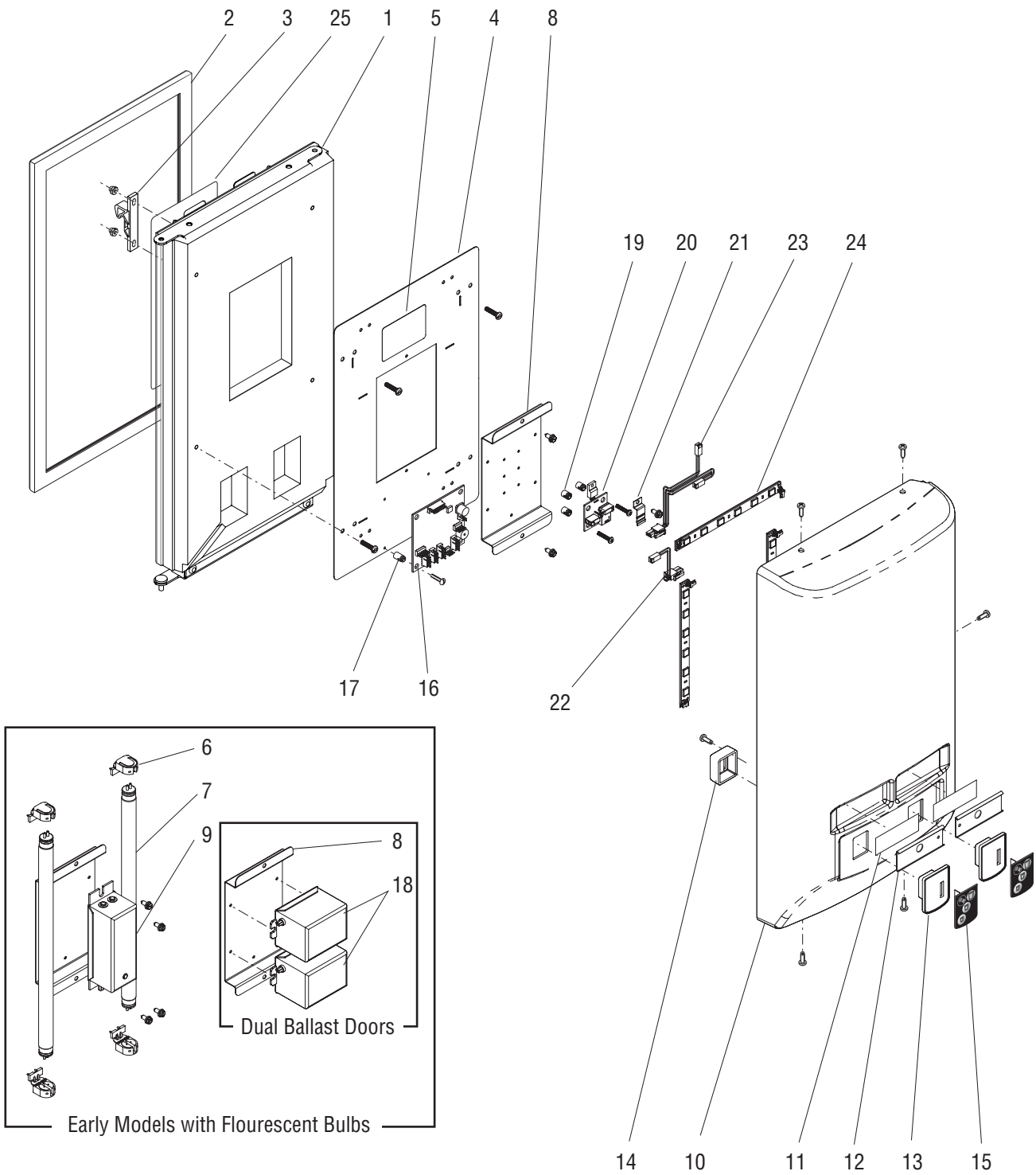
DOOR ASSEMBLY - LITED w/MECHANICAL SWITCHES

ITEM	PART NO.	QTY.	DESCRIPTION
1	38485.0000	1	Door, Inner (Includes item 2)
2	38568.0002	1	Gasket, Door
3	34667.0000	1	Keeper, Door Latch
	02319.0000	2	Nut, Acorn
	01501.0000	2	Washer
4	39721.0001	1	Panel, Light
	01370.0000	4	Screw, Pan Head #8-32 x .75"
5	40117.0000	1	Decal, Bulb Replacement (Early Models)
6	27543.0001	4	Lamp Holder (Early Models)
7	26239.0000	2	Lamp, Flourescent (Early Models)
8	40159.0001	1	Bracket
	02335.0001	2	Screw, Hex Crimptite #8 x .38"
9	40307.1000	1	Ballast (Single Ballast Doors)
	02335.0001	2	Screw, Hex Crimptite #8 x .38"
10	39699.0000	1	Cover, Door Front (Juice Display)
	39699.0001	1	Cover, Door Front (Iced Coffee Display)
	02331.0001	5	Screw, Truss Head, Blk #10-32 x .375"
11	32819.0001	2	Strip, Adhesive
12	37018.0001	2	Flavor Label Holder
13	28296.0002	2	Switch, Dispense
14	40307.0001	2	Ballast (Dual Ballast Doors)(Early Models)
	02335.0001	4	Screw, Hex Crimptite #8 x .38"
15	29081.0005	3	Spacer
16	41727.0000	1	Circuit Board
	14002.6300	3	Screw
17	41244.0000	1	Clip, Transducer
18	42609.0000	1	Wiring Harness
19	42609.0001	1	Wiring Harness
20	42593.0000	3	LED

The following items are not illustrated

21	38871.0000	1	Wiring Harness, Switches
22	32861.0000	-	Decals, Flavor (BUNN Juice)
	32861.0001	-	Decals, Flavor (BUNN Iced Coffee)
23	40469.0000	1	Wiring Harness, Ballast (Dual Ballast Doors)(Early Models)
24	21001.0731	4	Lead (For Each Lampholder)(Early Models)

* Indicates the part number listed is for reference only. See DESCRIPTION for possible service replacement.



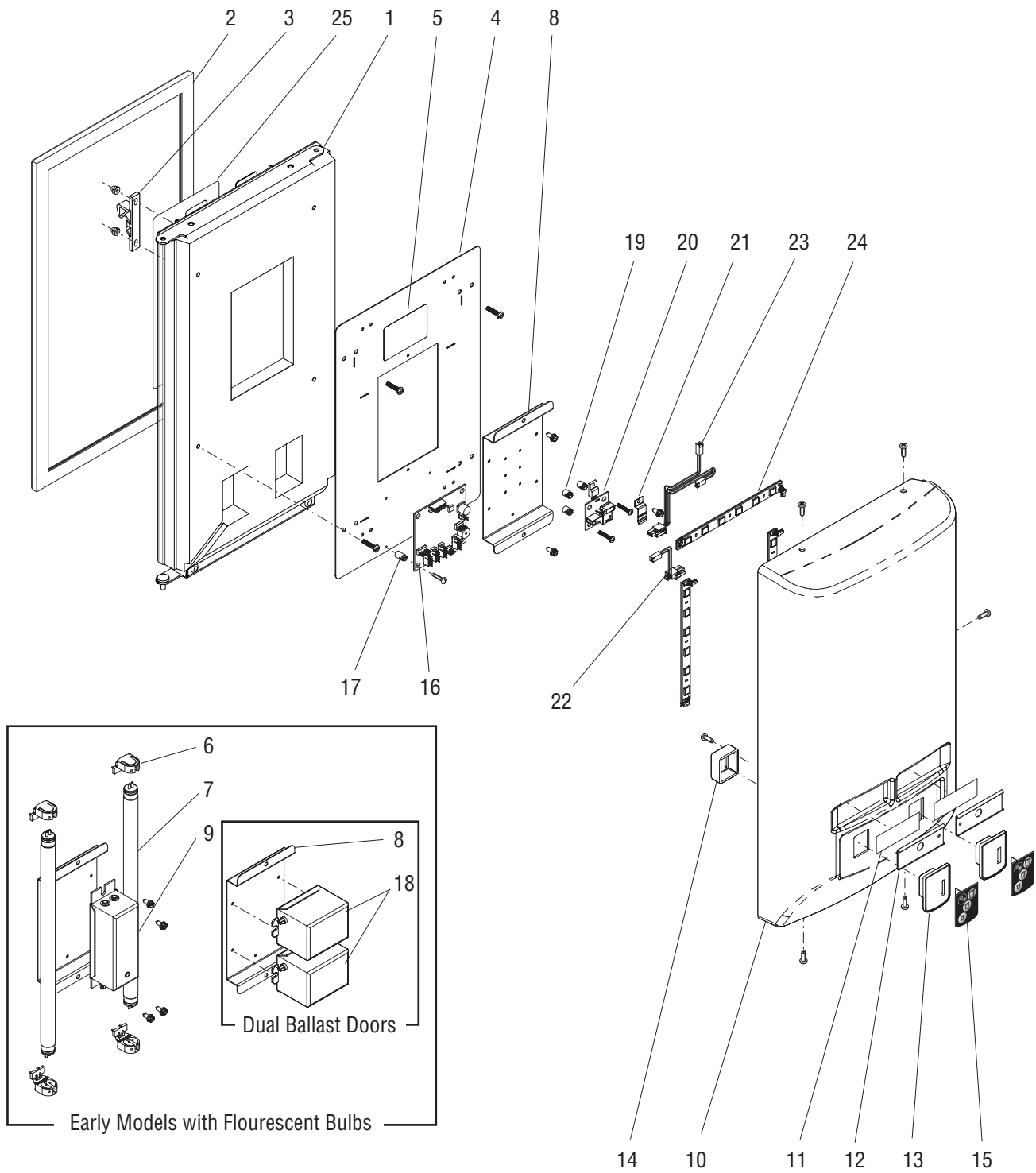
DOOR ASSEMBLY - LITED w/MEMBRANE SWITCHES

ITEM	PART NO.	QTY.	DESCRIPTION
1	49988.0000	1	Door, Inner (Includes item 2)
2	38568.0002	1	Gasket, Door
3	34667.0000	1	Keeper, Door Latch
	02319.0000	2	Nut, Acorn
	01501.0000	2	Washer
4	39721.0001	1	Panel, Light
	01370.0000	4	Screw, Pan Head #8-32 x .75"
5	40117.0000	1	Decal, Bulb Replacement (Early Models)
6	27543.0001	4	Lamp Holder (Early Models)
7	26239.0000	2	Lamp, Flourescent (Early Models)
8	40159.0001	1	Bracket
	02335.0001	2	Screw, Hex Crimptite #8 x .38"
9	40307.1000	1	Ballast (Single Ballast Doors)
	02335.0001	2	Screw, Hex Crimptite #8 x .38"
10	39699.0000	1	Cover, Door Front (Juice Display)
	39699.0001	1	Cover, Door Front (Iced Coffee Display)
	02331.0001	5	Screw, Truss Head, Blk #10-32 x .375"
11	32819.0001	2	Strip, Adhesive
12	37018.0001	2	Flavor Label Holder
13	40382.0000	2	Bezel, Switch
14	40381.0001	2	Retainer, Bezel
	38837.0000	4	Screw, Pan Head #4 x .50"
15	40606.0000	2	Membrane Switch (Portion Control Models)
	44971.0000	2	Membrane Switch (Push Button Models)
16	40875.0000	1	Circuit Board, Portion Control
	14002.6300	4	Screw, Pan Head #6-20 x .75"
17	29081.0000	4	Spacer, Circuit Board
18	40307.0001	2	Ballast (Dual Ballast Doors)(Early Models)
	02335.0001	4	Screw, Hex Crimptite #8 x .38"
19	29081.0005	3	Spacer
20	41727.0000	1	Circuit Board
	14002.6300	3	Screw
21	41244.0000	1	Clip, Transducer
22	42609.0000	1	Wiring Harness
23	42609.0001	1	Wiring Harness
24	42593.0000	3	LED

(Continued)

* Indicates the part number listed is for reference only. See DESCRIPTION for possible service replacement.

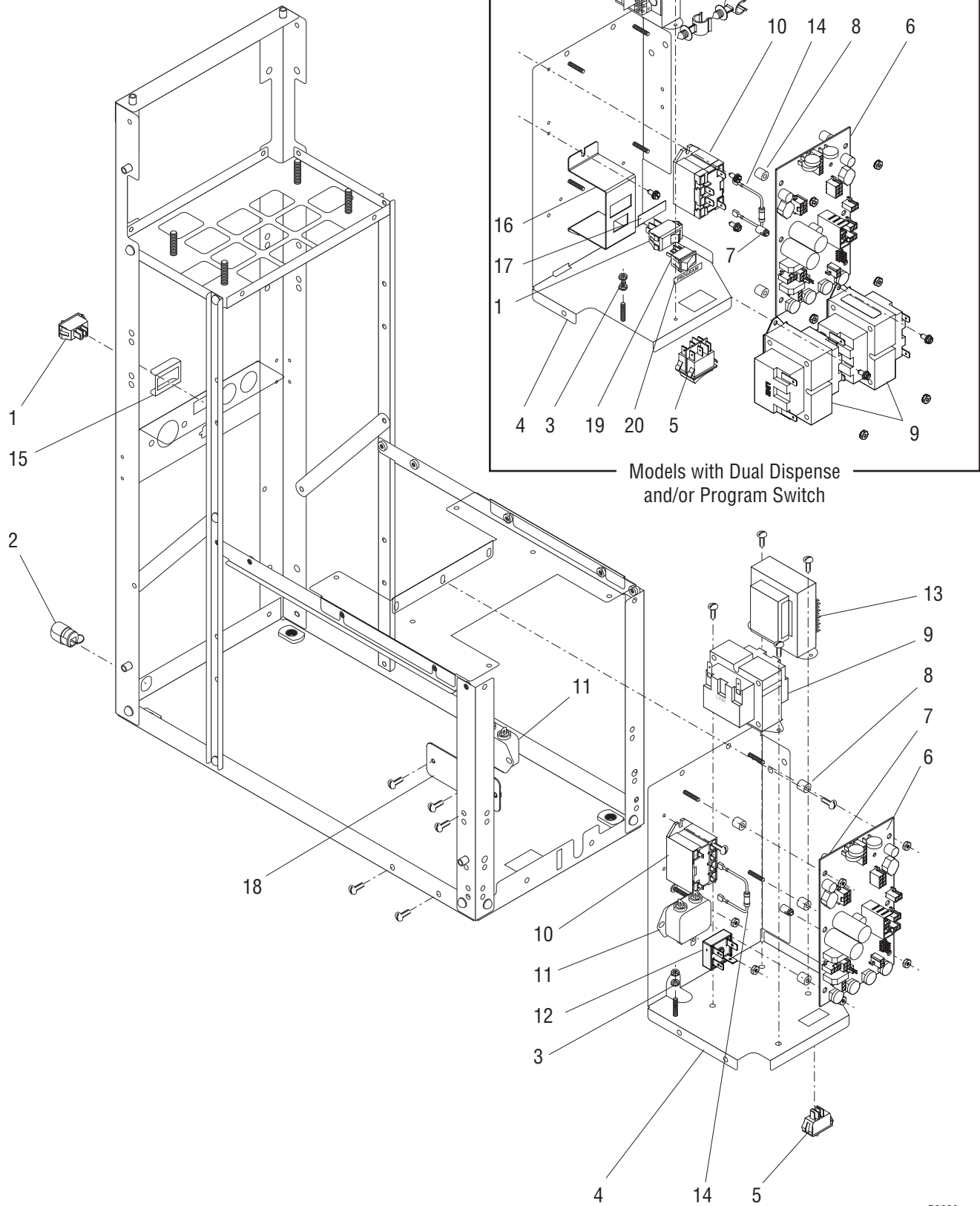
(Continued)



DOOR ASSEMBLY - LITED w/MEMBRANE SWITCHES

ITEM	PART NO.	QTY.	DESCRIPTION
25	44719.0001	1	Decal, Nozzle Cleaning
The following items are not illustrated			
25	41202.0000	1	Wiring Harness, Door (Early Models w/ Flourescent Bulbs)
	41202.0001	1	Wiring Harness, Door (Late Models w/ LED Lights)
	41202.0005	1	Wiring Harness, Door (Models w/ LED Lights & Program Switch)
26	32861.0000	-	Decals, Flavor (BUNN Juice)
	32861.0001	-	Decals, Flavor (BUNN Iced Coffee)
27	40469.0000	1	Wiring Harness, Ballast (Dual Ballast Doors) (Early Models)
28	21001.0731	4	Lead (For Each Lampholder) (Early Models)

* Indicates the part number listed is for reference only. See DESCRIPTION for possible service replacement.



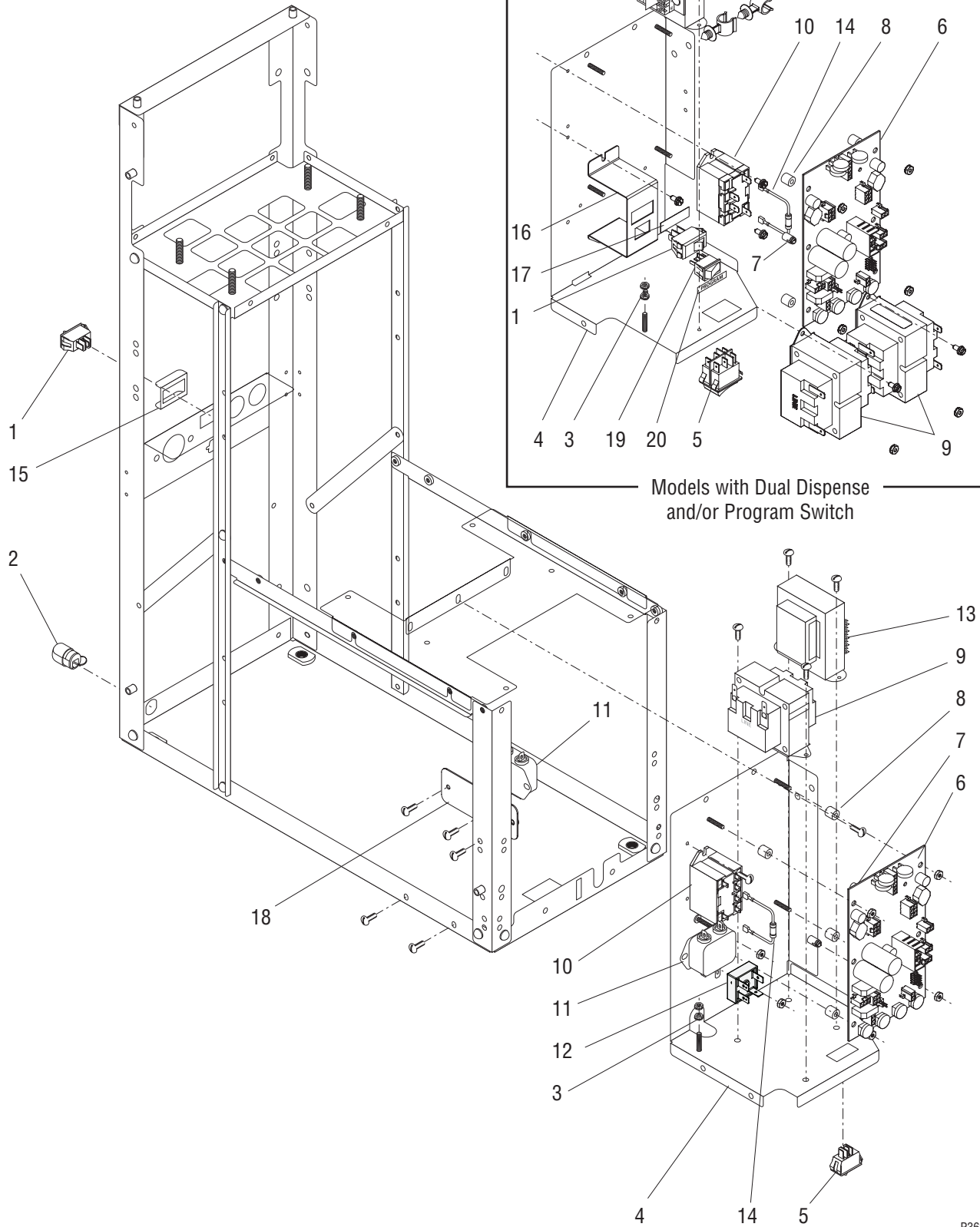
ELECTRICAL COMPONENTS

ITEM	PART NO.	QTY.	DESCRIPTION
1	04786.0002	1	Switch, Compressor ON/OFF
2	00707.0000	1	Bushing, Strain Relief
3	00970.0000	2	Nut, Harness Grounding
4	39797.0000*	1	Enclosure (Standard)
	39797.0001*	1	Enclosure (Models with Dual Dispense)
	44237.0000*	1	Enclosure (Models with Program Switch)
	44237.0001*	1	Enclosure (Models with Program Switch)(Salt Air Resistent)
	02308.0000	4	Screw, Pan Head #8-32 x .38"
5	39720.0000	1	Switch, Dispense Deck ON/OFF
6	40177.1000	1	Circuit Board
	00973.0000	4	Nut, Keps #6-32
7	29081.0000	2	Spacer
8	01533.0000	4	Spacer
9	39305.0000	1	Transformer 120V (One additional used with Dual Dispense)
	39417.0001	1	Transformer 230V
	02335.0001	2	Screw, Crimptite #8 x .38"
10	37711.0000	1	Relay 120V
	37711.0001	1	Relay 230V
	02335.0001	2	Screw, Crimptite #8 x .38"
11	29446.0000	1	EMI Filter 230V
	02335.0001	2	Screw, Crimptite #8 x .38"
12	22126.0000	1	Rectifier (Lited Doors w/ Flourescent Bulbs only)
	00973.0000	1	Nut, Keps #6-32
13	28860.0000	1	Transformer 120V (Models w/ Lited Door)
	28860.0001	1	Transformer 230V (Models w/ Lited Door)
	02335.0001	2	Screw, Crimptite #8 x .38"
14	40770.0000	1	Resistor 230V
15	40773.0001	1	Switch Guard (Early Models)
16	41503.0000	1	Bracket, Switch (Models with Front Mounted Compressor Sw.)
	44155.0000	1	Bracket, Switch (Models with Program Sw.)
	44155.0001	1	Bracket, Switch (Models with Program Sw.)(Salt Air Resistent)
	02335.0001	1	Screw, Crimptite #8 x .38"
	00973.0000	2	Nut, Keps #6-32
17	41509.0000	1	Decal, Compressor Switch (Models with Front Mounted Compressor Sw.)
18	41411.0000	1	Bracket, EMI Filter (Models with Front Mounted Compressor Sw.)
	02335.0001	1	Screw, Crimptite #8 x .38"
	02328.0003	2	Screw, Pan Head #6-32 x .312"
	00973.0000	2	Nut, Keps #6-32

(Continued)

* Indicates the part number listed is for reference only. See DESCRIPTION for possible service replacement.

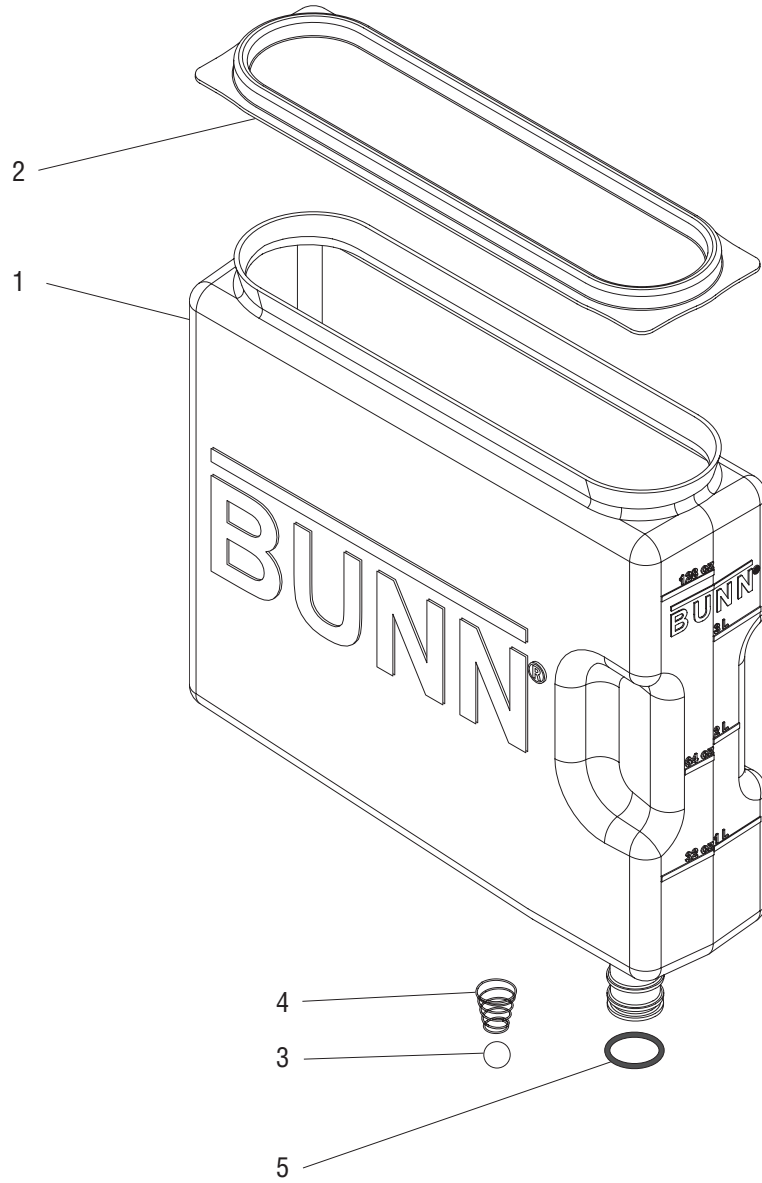
(Continued)



ELECTRICAL COMPONENTS

ITEM	PART NO.	QTY.	DESCRIPTION
19	20317.0004	1	Switch, Program
20	44240.0000	1	Decal, Program
The following items are not illustrated			
21	20630.0013	1	Power Cord 120V
	27728.0009	1	Power Cord 230V
22	38870.0000	1	Wiring Harness, Transformer to Circuit Bd. (One additional used with Dual Dispense)
23	40118.0000	1	Wiring Harness, Transformer to Circuit Board (Lited Doors)
24	38869.0001	1	Wiring Harness, Main 120V (Models with rear mounted refrigeration switch)
	38869.0002	1	Wiring Harness, Main 120V (Models with front mounted refrigeration switch)
25	38873.1000	1	Wiring Harness, Platform
26	38872.0001	1	Wiring Harness, Unlited Door
	38872.0002	1	Wiring Harness, Unlited Door (Models with Program Sw.)
	40044.0002	1	Wiring Harness, Lited Door (Models with Flourescent Bulbs)
	40044.0003	1	Wiring Harness, Lited Door (Models with LED Lighting)
27	39198.0000	1	Wiring Harness, EMI Filter 230V
28	41436.0000	1	Wiring Harness, Transformer Jumper (Models with Dual Dispense)
29	41203.0000	1	Wiring Harness, Dispense Disable Switch (Models with Portion Control)
	41203.0001	1	Wiring Harness, Dispense Disable Switch (Models with Program Sw.)
30	41202.0000	1	Wiring Harness, Lited Door (Models with Flourescent Bulbs)
	41202.0001	1	Wiring Harness, Lited Door (Models with LED Lighting) (Models w/ Portion Control)
	41202.0005	1	Wiring Harness, Lited Door (Models with LED Lighting)(Models w/ Program Sw.)

* Indicates the part number listed is for reference only. See DESCRIPTION for possible service replacement.



REFILLABLE CONTAINER ASSEMBLY

ITEM	PART NO.	QTY.	DESCRIPTION
-	39302.0000	1	Container Assy (Includes items 1-5)
1	39301.0000*	1	Container
2	39299.0000	1	Lid
3	00598.0002	1	Ball (Early Models)
4	32877.0000	1	Spring (Early Models)
5	34261.0000	1	O-ring

* Indicates the part number listed is for reference only. See DESCRIPTION for possible service replacement.

NUMERICAL INDEX

PART NO.	PAGE NO.	PART NO.	PAGE NO.	PART NO.	PAGE NO.	PART NO.	PAGE NO.
00396.0002	13,15,17	26801.0000	7	33522.1003	19	37850.0000	25
00598.0002	59	27243.0000	13,15,17,25,29	33533.0000	25	37853.0000	43
00656.0001	5	27258.0000	23	33553.0000	43	37977.0000	43
00668.0000	5	27354.0000	5	33580.0000	43	37990.0000	43
00669.0002	9	27394.0000	9	33602.0000	23	38018.1001	41,43
00707.0000	55	27410.0000	25,29	33603.0000	23	38104.0000	41
00901.0000	15,17	27442.7000	5	33603.0001	23	38120.0001	41
00970.0000	55	27543.0001	49,51	33669.0000	9	38121.0001	41
00973.0000	55	27728.0009	57	33725.0000	43	38474.1000	41
00973.0001	25,29	28296.0002	47,49	33781.0000	41	38476.1000	47
00986.7000	5	28567.0000	13,15,17	33801.0003	25,29	38485.0000	47,49
01308.0000	41,43	28755.1011	41	34010.0001	11	38560.0000	47
01322.0001	41	28860.0000	55	34010.0002	11	38560.0001	47
01347.0000	43	28860.0001	55	34261.0000	59	38568.0002	47,49,51
01359.0000	9	28891.1000	25	34325.0004	37	38605.0000	25,29,45
01370.0000	49,51	29081.0000	51,55	34362.0002	9	38606.0000	5
01370.0001	41	29081.0005	49,51	34416.0000	25	38615.0000	5
01388.0000	9	29421.0000	33,35	34418.0001	13,15,17	38615.0001	5
01501.0000	47,49,51	29446.0000	55	34418.0004	17	38616.0000	9,11
01512.0000	5	29951.0002	13,15,17	34419.0001	9	38617.1001	7
01533.0000	55	29951.0003	17	34419.0003	9	38654.0000	5
02308.0000	5,7,9,11,13,15	32089.0000	17	34421.0001	9	38654.0001	5
02308.0000	17,25,29,55	32204.0010	23	34421.0004	9	38655.0001	7
02319.0000	47,49,51	32204.1001	23	34422.0003	9	38655.0002	7
02328.0003	55	32204.1002	23	34460.0000	37,39	38660.0001	41
02331.0001	5,9,47,49,51	32252.0001	43	34461.0000	45	38661.0000	5
02335.0001	5,13,15,17	32283.0000	37,39	34529.0000	13,15,17	38662.0001	25,29
02335.0001	49,51,55	32461.0000	9	34644.0000	27,33	38716.1001	5
03996.0000	5	32463.0000	43	34666.0001	9	38717.1001	5
04786.0002	55	32591.0014	25,29	34667.0000	47,49,51	38718.1003	5
11707.0009	25,29	32591.1001	27,31	34738.0001	9	38719.0004	5
11707.0016	25,29	32591.1002	27,31	34738.0002	9	38719.1001	5
11707.0043	25,29	32602.0000	43	34741.0000	9	38765.1000	7
11707.0044	9	32603.0000	43	34784.0000	9	38827.1002	25
11707.1000	11	32613.1003	41	34785.0001	9	38827.1003	25
11707.1000	27,31	32623.0000	43	34790.0001	9	38828.1000	25
11707.1001	27,31	32624.0001	43	34790.0002	9	38829.0000	27
11707.1002	27,31	32631.0000	45	35164.1001	13,15,17	38833.0000	25,29
12467.1002	13,15,17	32656.0000	41	35165.1003	25,29	38833.0001	25,29
12468.1002	13,15,17	32732.0000	41	35175.1002	13,15,17	38837.0000	51
14002.6300	49,51	32776.0000	13,15,17	35178.0000	13,15,17	38857.1000	9
20317.0004	57	32819.0001	47,49,51	35272.0002	25	38869.0001	57
20630.0013	57	32848.0000	9	35272.0003	29	38869.0002	57
21001.0731	49,53	32849.0001	43,45	35930.0000	9	38870.0000	57
21275.0003	25,29,33,35	32851.0000	43	36233.1005	37,39	38871.0000	47,49
21275.0003	37,39,41	32852.0000	43	36233.1006	37	38872.0001	57
21275.0006	39	32853.0001	43	36329.0002	25	38872.0002	57
21275.0011	37,45	32861.0000	47,49,53	36528.0000	21	38873.1000	41,57
21436.0000	7	32861.0001	47,49,53	37018.0001	47,49,51	38896.0000	19
22126.0000	55	32877.0000	59	37297.1001	37,39	38897.0000	19
23700.0000	13,23	32957.0000	41	37711.0000	55	38897.0001	19
24544.0000	9,25,29	33153.0000	25	37711.0001	55	38916.0000	19
26239.0000	49	33297.0000	9	37786.0000	41	38917.0000	19
26239.0000	51	33461.0001	5	37801.0003	43	38918.0000	19
26528.0000	5	33522.1002	19	37843.0001	43	38921.0001	15

NUMERICAL INDEX

PART NO.	PAGE NO.	PART NO.	PAGE NO.	PART NO.	PAGE NO.	PART NO.	PAGE NO.
38922.0001.....	15	41396.0000.....	19	45928.0000.....	27,29,33,35		
38924.0000.....	25,29	41397.0000.....	19	46048.0001.....	39		
38925.0000.....	25,29	41398.0000.....	19	46048.0003.....	45		
38934.0001.....	15	41411.0000.....	55	46048.0004.....	45		
38937.0000.....	13,15,17	41436.0000.....	57	46048.0008.....	37		
38943.1000.....	27	41503.0000.....	55	46048.1000.....	37,39,45		
38950.0000.....	5	41509.0000.....	55	46048.1001.....	37,39,45		
39086.0000.....	11	41640.0000.....	37,39	46048.1002.....	37,39,45		
39142.0000.....	21	41727.0000.....	49,51	46112.0000.....	17		
39198.0000.....	57	42478.0003.....	5	46113.0000.....	17		
39299.0000.....	59	42478.1001.....	5	47581.0000.....	25,29		
39301.0000.....	59	42593.0000.....	49,51	49819.1000.....	9		
39302.0000.....	59	42609.0000.....	49,51	49819.1001.....	9		
39305.0000.....	55	42609.0001.....	49,51	49819.1002.....	11		
39417.0001.....	55	43644.0000.....	37,39	49819.1003.....	11		
39491.0004.....	5	43694.0000.....	9	49988.0000.....	51		
39491.1002.....	5	43951.0000.....	9	50294.0000.....	41		
39491.1003.....	5	44015.1000.....	7	50295.0000.....	41		
39655.0002.....	29	44155.0000.....	55	50548.0000.....	29		
39690.0000.....	41	44155.0001.....	55	51522.0000.....	29		
39699.0000.....	49,51	44237.0000.....	55	51882.0000.....	33,39		
39699.0001.....	49,51	44237.0001.....	55	51902.0000.....	29,35		
39720.0000.....	55	44240.0000.....	57	51906.0000.....	35		
39721.0001.....	49,51	44719.0001.....	53	51921.0000.....	35		
39797.0000.....	55	44745.0000.....	5	51951.0000.....	13		
39797.0001.....	55	44762.0000.....	29	51997.0000.....	13		
39907.0000.....	19	44971.0000.....	51	M2336.1000.....	13,15,17,27		
39908.0002.....	19	45706.0001.....	5	M2336.1000 ..	31,33,35,37,39		
39908.0003.....	19	45706.0002.....	5	M2337.1000.....	27,31		
39912.0002.....	19	45706.0003.....	5	M2546.1000.....	13,15,17		
39912.0003.....	19	45848.0000.....	25,33,39	M2546.1000.....	31,35,39		
40044.0002.....	57	45848.0001.....	25	M2550.0001.....	11		
40044.0003.....	57	45848.0002.....	33	M2568.1000.....	43		
40071.0001.....	37	45848.0004.....	39				
40117.0000.....	49,51	45848.0005.....	35				
40118.0000.....	57	45848.0009.....	37				
40159.0001.....	49,51	45848.0016.....	41				
40177.1000.....	55	45848.0019.....	25,29				
40307.0001.....	49,51	45848.0021.....	37				
40307.1000.....	49,51	45848.1000.....	27,31,33,35				
40381.0001.....	51	45848.1000.....	37,39,41				
40382.0000.....	51	45848.1001.....	27,31,33,35				
40469.0000.....	49,53	45848.1001.....	37,39,41				
40606.0000.....	51	45848.1002.....	27,31,33,35				
40770.0000.....	55	45848.1002.....	37,39,41				
40773.0001.....	55	45896.0000.....	21				
40875.0000.....	51	45897.0000.....	21				
41105.0003.....	17	45898.0000.....	21				
41202.0000.....	53,57	45898.0001.....	21				
41202.0001.....	53,57	45899.0000.....	21				
41202.0005.....	53,57	45899.0001.....	21				
41203.0000.....	57	45901.0000.....	21				
41203.0001.....	57	45901.0001.....	21				
41244.0000.....	49,51	45908.0000.....	21				
41385.0000.....	11	45909.0000.....	21				