

ADCRAFT®



GW-120 Bar Glass Washer

This manual contains important information regarding your *Admiral Craft* unit. Please read this manual thoroughly prior to product set-up, operation and maintenance. Failure to comply with regular maintenance guidelines outlined in this manual may void the warranty. MUST READ!!!

WARNINGS

- Motor is water resistant but not submersible. Do not use product in sinks or tanks where there is a risk of falling over or submersing
- Always observe water level labels on product
- Motors may get hot with extended use.
- Plug only into a 3-hole grounded electrical outlet
- Ensure that the designated power supply is adequate for continual usage and the voltage is correct
- Keep electrical cord clear of brushes and water
- Unplug cord from outlet when not in use and before cleaning
- Do not operate product out of water
- Ensure brushes are securely in place before turning product on
- Do not use this unit for anything other than intended use
- Do not use if unit has a damaged cord or plug
- In the event the appliance malfunctions, unplug immediately
- Keep children and animals away from unit
- Any incorrect installation, alterations, adjustments and/or improper maintenance can lead to property loss and injury. All repairs should be done by authorized professionals only
- Always keep product upright

TO USE

1. Place product in sink and fill with warm water to the top of the lowest brushes or the water line label.
2. Plug product into a grounded outlet and turn machine on.

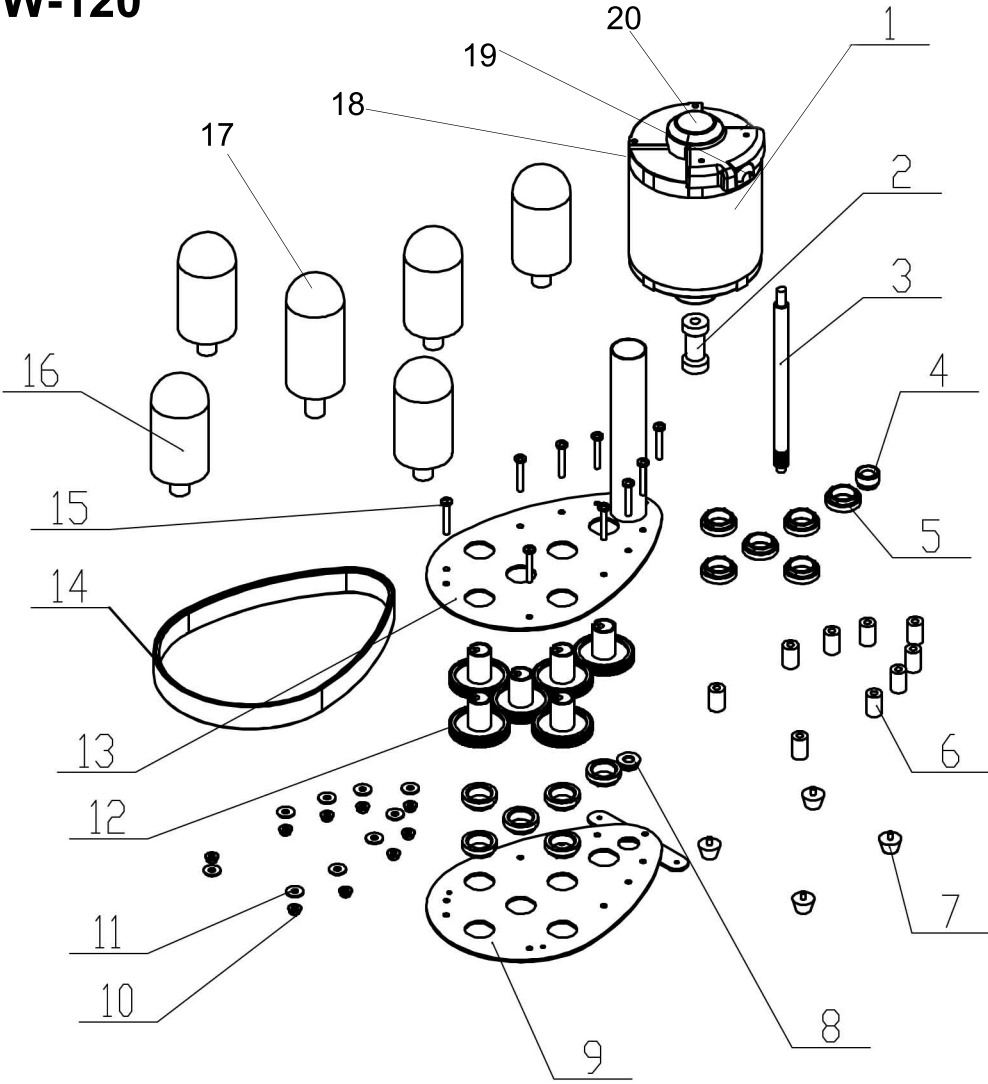
Only use “low suds” detergent in water. Granular (powder) detergents are not recommended.

For best results, wash one glass at a time. Always start the glass washer before placing a glass over the brush. Center brush is designed to clean the inside of the glass while the four outer brushes wash the outside. For optimal glass cleaning, rinse in fresh water in another sink and sanitize glass in a third sink. Set glasses aside to drain.

CLEANING AND MAINTENANCE

- Drain sink and wipe off machine every night
- Allow for glass washer to dry overnight
- Once a month, lift off rubber band that protects the gear housing. Immerse product in enough water to cover brushes and add a half cup of vinegar or bleach. Run product for 10 minutes, rinse thoroughly and replace band.

GW-120



Redhead Glass Washer - GW-120

Diagram #	Part Number	PART NAME	QTY per unit
1	GW-1	Complete Motor set w/power cord, switch and red top	1
2	GW-2	Axel	1
3		Rotation Shaft	1
4	GW-4	Plastic Bushing for Shaft	1
5		Copper Sheating	12
6		Gasket	9
7	GW-7	Foot	4
8		Bottom Bushing	1
9		Bottom Plate	1
10		Nut	9
11		Washer	9
12	GW-12	Gear Shell	6
13		Top Plate	1
14	GW-14	Rubber Seal	1
15		Cross Screw w/Flathead	9
16	GW-16	Outside Brush	4
17	GW-17	Center Brush	1
18	GW-18	Power Cord	1
19	GW-19	On/Off Switch	1
20	GW-20	Red Plastic top	1

VER0613

(This page left blank on purpose)

ACE Equipment One Year Limited Warranty

Admiral Craft Equipment Corp. (ACE) warrants its equipment against defects in materials and workmanship, subject to the following conditions:

ACE Equipment is warranted for one year, effective from the date of purchase by the original owner. A copy of the original receipt or other proof of purchase is required to obtain warranty coverage. This warranty applies to the original owner only, and is not assignable.

Should any product fail to function in its intended manner under normal use within the limits defined in this warranty, at ACE's discretion, such product will be repaired, replaced with a refurbished unit, or replaced with a new unit by ACE, after defective unit has been inspected and defect has been confirmed. ACE does not assume any liability for extended delays in replacing any item beyond its control. This warranty does not apply to rubber and non-metallic synthetic parts that may need to be replaced due to normal usage, wear or lack of preventative maintenance.

This warranty covers products shipped into the 48 contiguous United States, Hawaii, and metropolitan areas of Alaska and Canada. Warranty coverage on products used outside the 48 contiguous United States, Hawaii and metropolitan areas of Alaska and Canada may vary. Contact ACE for details at 1-800-223-7750

The following conditions are not covered by warranty:

- Equipment failure relating to improper installation, improper utility connection or supply and problems due to improper ventilation.
- Equipment that has not properly been maintained, damage from improper cleaning, and water damage to controls.
- Equipment that has not been used in an appropriate manner, or has been subject to misuse, neglect, abuse, accident, alteration, negligence, damage during transit, delivery or installation, fire, flood, riot, or act of God.
- Equipment that has the model number or serial number removed or altered.
- Equipment on which the security seal has been broken.

If the equipment has been changed, altered, modified, or repaired without express written permission from ACE, then the manufacturer shall not be liable for any damages to any person or to any property, which may result from the use of this equipment thereafter.

This equipment is intended for commercial use only and this warranty is void if equipment is used in other than a commercial application.

For warranty and non-warranty related issues please call ACE at 1-800-223-7750 ext 3 to speak to technical support. When calling please have your model number, serial number and proof of purchase ready. To purchase replacement parts, receive online technical support or fill out a warranty claim visit www.admiralcraftequipment.com. It is not necessary to contact the place where you originally purchased your product from.

“THE FOREGOING WARRANTY IS IN LIEU OF ANY AND ALL WARRANTIES EXPRESSED OR IMPLIED INCLUDING ANY IMPLIED WARRANTY OF MERCHANTABILITY OR FITNESS FOR PARTICULAR PURPOSES AND CONSTITUTES THE ENTIRE LIABILITY OF ACE. IN NO EVENT DOES THE LIMITED WARRANTY EXTEND BEYOND THE TERMS STATED HEREIN.”